

EXECUTIVE OFFICE SPACE FOR LEASE

12508 COURSEY BLVD., BATON ROUGE, LA. 70816

SUITE B - AVAILABLE November 1, 2023



FOR LEASE - \$16.00/PSF - **Suite B**, located in a free standing, recently constructed (2008) executive office space. Approximately 1,307+- square feet. High end finishes, 9' ceilings throughout, wood floors in reception and hallway, carpet in offices, ADA Restrooms, Roomy break room with Fridge. Functional layout with plenty of parking. Excellent location and unmatched visibility within stabilized area, Contact listing agent for additional information.

Marketed exclusively by: Remax Partners
5681 Commerce Street
St. Francisville, LA 70775

Office: 225-250-4450
cell: 225-954-4747

Doug Ferris

doug@dougferris.com

RE/MAX
PARTNERS
225-250-4450

Each office independently owned and operated

This information has been obtained from sources deemed to be reliable, but neither Realtor nor Remax Partners make any representations or warranties, expressed or implied, as to the accuracy of this information. References to property lines, dimensions, tenants, square footages or any information contained herein is approximate and subject to change. Lessee must verify any and all information and bears all risk for any inaccuracies. Each office independently owned and operated.



CONFERENCE ROOM



MIDDLE OFFICE



KITCHEN/BREAK ROOM



RECEPTION



FRONT OFFICE



REAR OFFICE

Marketed exclusively by: Remax Partners
5681 Commerce Street
St. Francisville, LA 70775

Office: 225-250-4450
cell: 225-954-4747

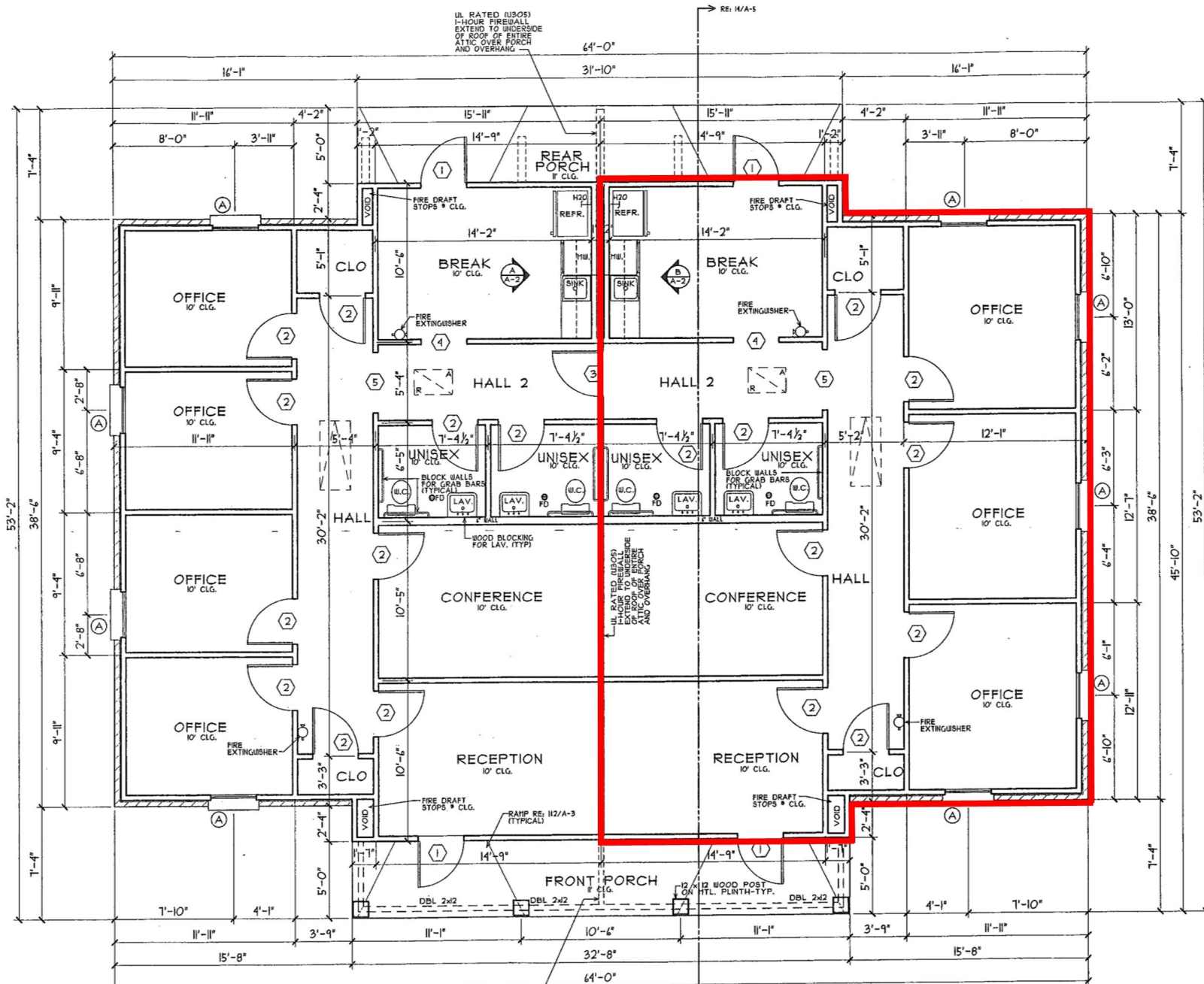
Doug Ferris

doug@dougferris.com

RE/MAX
PARTNERS
225-250-4450

Each office independently owned and operated

This information has been obtained from sources deemed to be reliable, but neither Realtor nor Remax Partners make any representations or warranties, expressed or implied, as to the accuracy of this information. References to property lines, dimensions, tenants, square footages or any information contained herein is approximate and subject to change. Lessee must verify any and all information and bears all risk for any inaccuracies. Each office independently owned and operated.



Marketed exclusively by: Remax Partners
 5681 Commerce Street
 St. Francisville, LA 70775

Office: 225-250-4450
 cell: 225-954-4747

Doug Ferris

doug@dougferris.com

RE/MAX
PARTNERS
 225-250-4450

Each office independently owned and operated

This information has been obtained from sources deemed to be reliable, but neither Realtor nor Remax Partners make any representations or warranties, expressed or implied, as to the accuracy of this information. References to property lines, dimensions, tenants, square footages or any information contained herein is approximate and subject to change. Lessee must verify any and all information and bears all risk for any inaccuracies. Each office independently owned and operated.



Marketed exclusively by: Remax Partners
 5681 Commerce Street
 St. Francisville, LA 70775

Office: 225-250-4450
 cell: 225-954-4747

Doug Ferris
 doug@dougferris.com

RE/MAX
PARTNERS
 225-250-4450

Each office independently owned and operated

This information has been obtained from sources deemed to be reliable, but neither Realtor nor Remax Partners make any representations or warranties, expressed or implied, as to the accuracy of this information. References to property lines, dimensions, tenants, square footages or any information contained herein is approximate and subject to change. Lessee must verify any and all information and bears all risk for any inaccuracies. Each office independently owned and operated.