



CORPORATE REALTY

201 St. Charles Ave., Suite 3811, New Orleans, LA 70170

504.581.5005 | corp-realty.com

RETAIL | FOR LEASE

Prime Retail Space Available on W. Thomas Street

2108 W. Thomas Street

HAMMOND, LA 70403

Mitchell Halpern
mhalpern@corp-realty.com
504.919.5211

Matt Crowell
mcrowell@corp-realty.com
504.581.5005

Jonathan Fawer
jfawer@corp-realty.com
504.581.5005



RETAIL SPACE AVAILABLE IN HAMMOND WEST SHOPPING CENTER

2108 W. Thomas Street, Hammond, LA 70403

DESCRIPTION

Hammond West Shopping Center is a 19,531-sf neighborhood retail center situated on West Thomas Street (17,889 vpd), the primary commercial corridor in Hammond. The property is surrounded by national and regional retailers, restaurants, and service providers, offering exceptional visibility, ample surface parking, and convenient access to both I-55 and I-12. It is an ideal location for retail, medical, or service

tenants seeking strong traffic counts and a well-established trade area.

The one available suite in this center shares parking with other tenants and has the opportunity for both façade and monument signage.

DETAILS

| | |
|----------------|-----------------------------|
| SIZE | 1,100 rsf |
| PRICE | \$18.00 - \$20.00 prsf, NNN |
| PARKING | 72 spaces |



CORPORATE REALTY

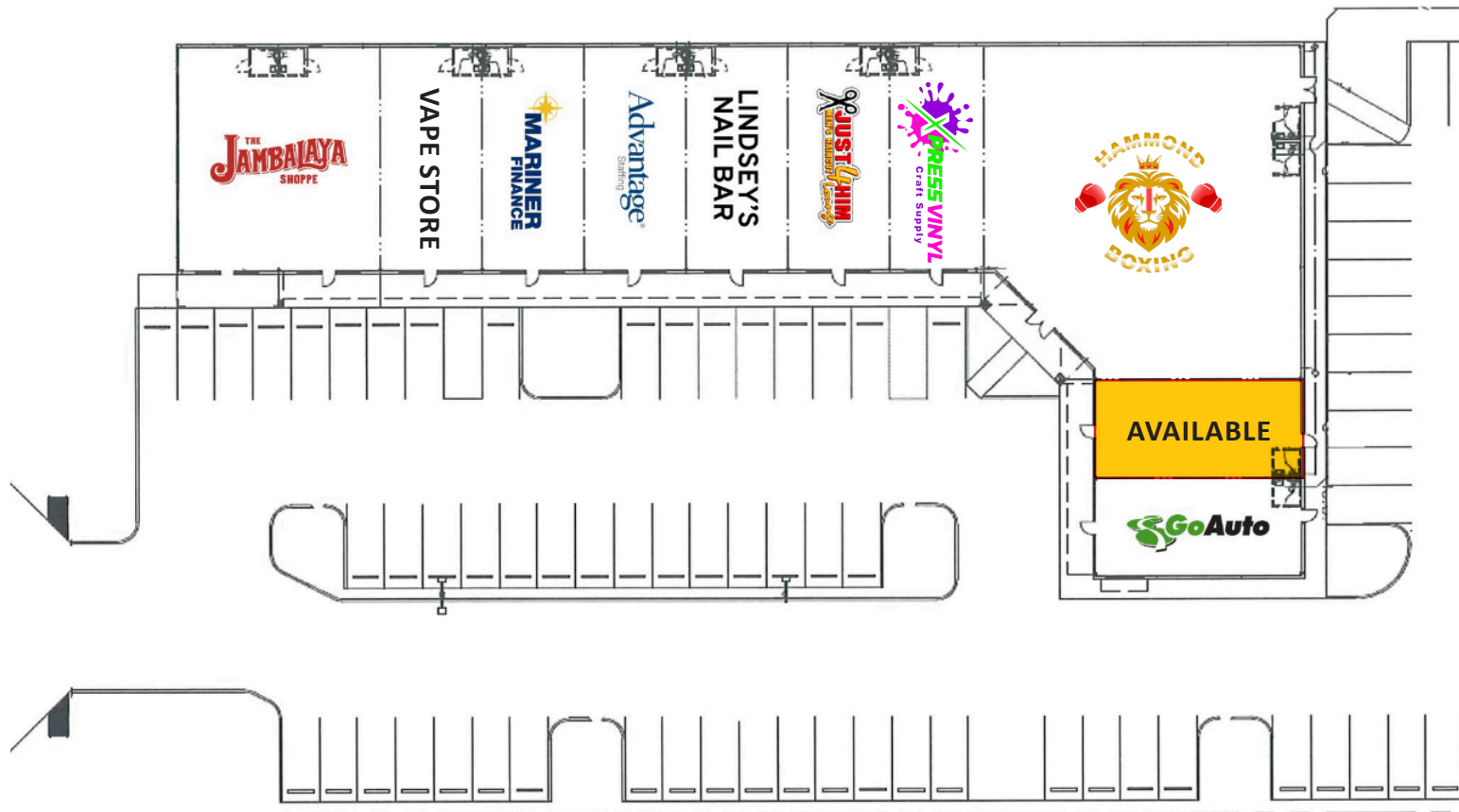
A MEMBER OF
CHAINLINKS
RETAIL ADVISORS

Mitchell Halpern
mhalpern@corp-realty.com
504.919.5211

Matt Crowell
mcrowell@corp-realty.com
504.581.5005

Jonathan Fawer
jfawer@corp-realty.com
504.581.5005

SITE PLAN



CORPORATE REALTY

A MEMBER OF
CHAINLINKS
RETAIL ADVISORS

Mitchell Halpern
mhalpern@corp-realty.com
504.919.5211

Matt Crowell
mcrowell@corp-realty.com
504.581.5005

Jonathan Fawer
jfawer@corp-realty.com
504.581.5005



Google

Map data ©2025 Google



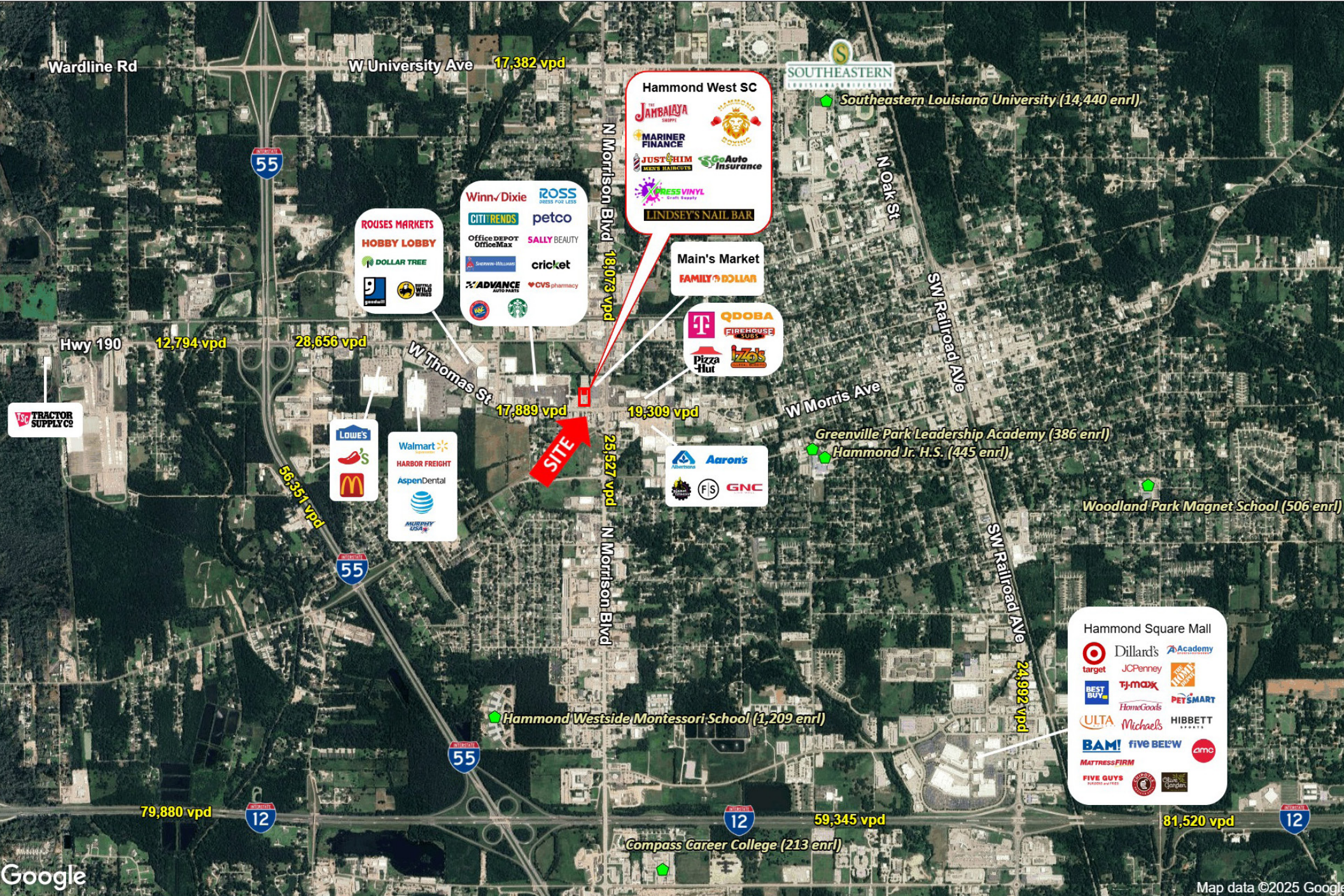
CORPORATE REALTY

A MEMBER OF
CHAINLINKS
RETAIL ADVISORS

Mitchell Halpern
mhalpern@corp-realty.com
504.919.5211

Matt Crowell
mcrowell@corp-realty.com
504.581.5005

Jonathan Fawer
jfawer@corp-realty.com
504.581.5005



CORPORATE REALTY

A MEMBER OF
CHAINLINKS
RETAIL ADVISORS

Mitchell Halpern
mhalpern@corp-realty.com
504.919.5211

Matt Crowell
mcrowell@corp-realty.com
504.581.5005

Jonathan Fawer
jfawer@corp-realty.com
504.581.5005

RETAIL | FOR LEASE

Prime Retail Space Available on W. Thomas Street

2108 W Thomas Street, Hammond, LA 70403



Mitchell Halpern
mhalpern@corp-realty.com
504.919.5211



Matt Crowell
mcrowell@corp-realty.com
504.581.5005



Jonathan Fawer
jfawer@corp-realty.com
504.581.5005



CORPORATE REALTY

A MEMBER OF
CHAINLINKS
RETAIL ADVISORS

201 St. Charles Ave., Suite 3811, New Orleans, LA 70170
504.581.5005 | corp-realty.com

The information contained herein has been obtained from sources that we deem reliable. No representation or warranty is made as to the accuracy thereof, and it is submitted subject to errors, omissions, change of price, or other conditions, or withdrawal without notice. Licensed in Louisiana, 11/2025