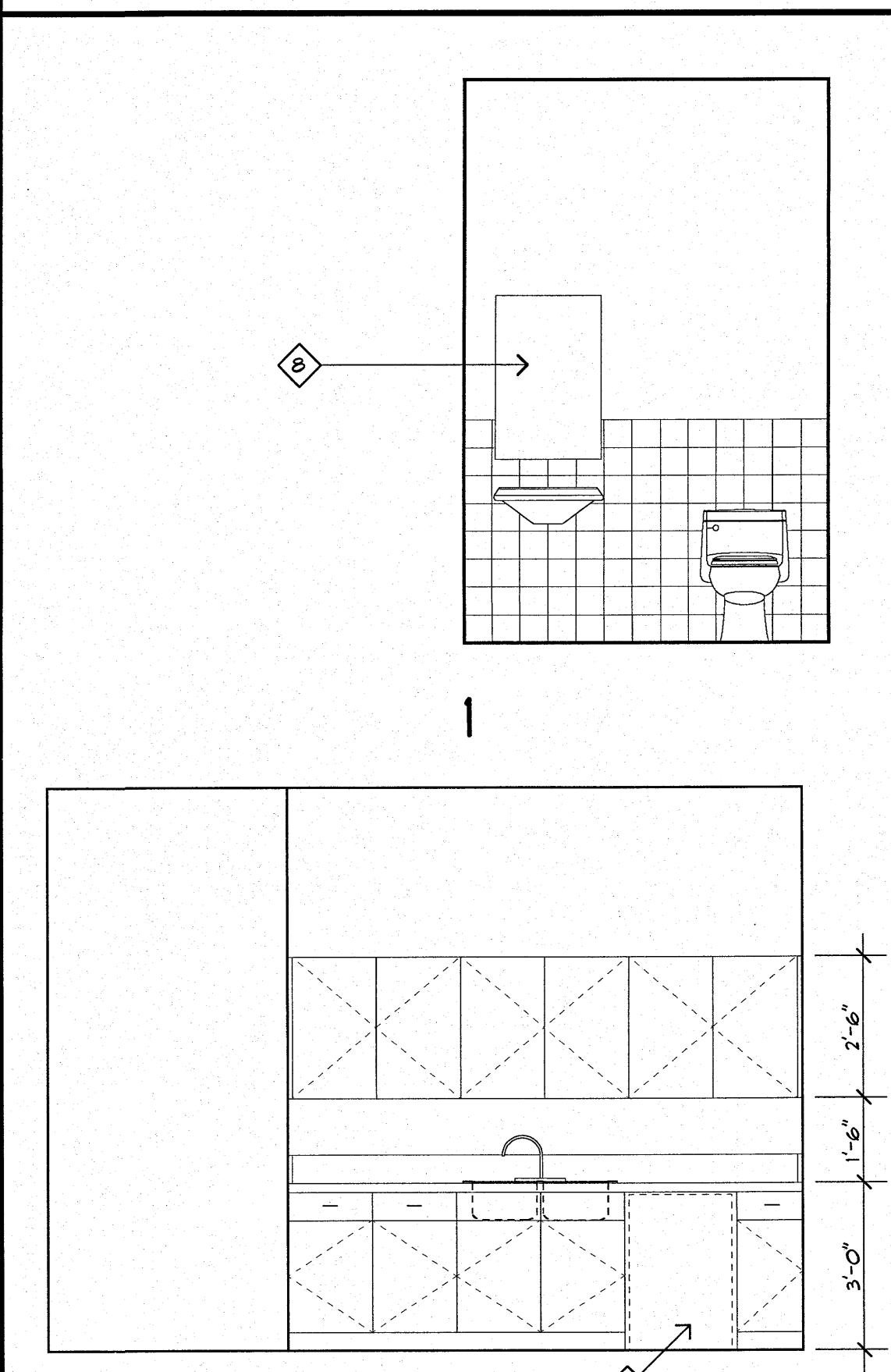


OPENING SCHEDULE		
MARK	SIZE	DESCRIPTION
1	15'-0" x 8'-0"	STOREFRONT UNIT INCLUDING PAIR OF 3'-0" x 1'-0" DOORS. SEE SOUTH ELEVATION.
2	3'-0" x 1'-0" x 1 3/4"	HOLLOW METAL DOOR AND FRAME. PAINTED.
3	3'-0" x 1'-0" x 1 3/4"	MASONITE RAISED PANEL DOOR IN WOOD FRAME. PAINTED.
4	3'-0" x 1'-0"	CASED OPENING.
A	6'-0" x 8'-0"	STOREFRONT UNIT WITH FIXED, INSULATED GLASS.
B	3'-6" x 5'-0"	INTERIOR FIXED GLASS, SINGLE PANE, CLEAR, IN WOOD FRAME.

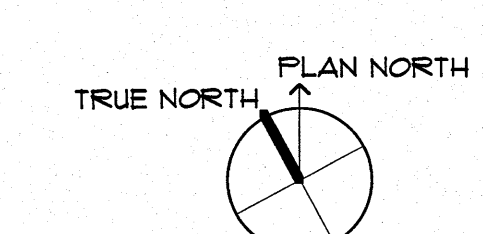
- KEYNOTES:**
- 1 THIS WALL IS SHARED W/ ADJACENT TENANT. WHERE NOTED, DIMENSIONS ARE TO CENTERLINE OF WALL.
  - 2 THE WALL CONTINUES ON ADJACENT TENANT'S PLAN.
  - 3 2" x 6" STUD WALL.
  - 4 3/4" STUCCO ON GALVANIZED METAL LATH.
  - 5 STANDING BEAM METAL CANOPY.
  - 6 PROVIDE 5' x 5' CONCRETE LANDING.
  - 1 UNDER-COUNTER REFRIGERATOR.
  - 2 2' x 3' FRAMED MIRROR.

- ADDITIONAL NOTES:**
- ALL WINDOWS TO BE METAL FRAME WITH THERMAL BREAK, TRIPLE PANE WITH LOW-E, TINTED, FACTORY ASSEMBLED, SHGC 0.41 (OR LESS) GLASS.
  - THE GLASS DOOR #1 SHALL BE TINTED AND HAVE A SHGC 0.81, OR LESS.
  - DOOR #2 WILL BE INSULATED AND HAVE A U-FACTOR OF 0.5 OR LESS.
  - PROVIDE SAFETY GLAZING AT STOREFRONT DOORS AND GLAZING.

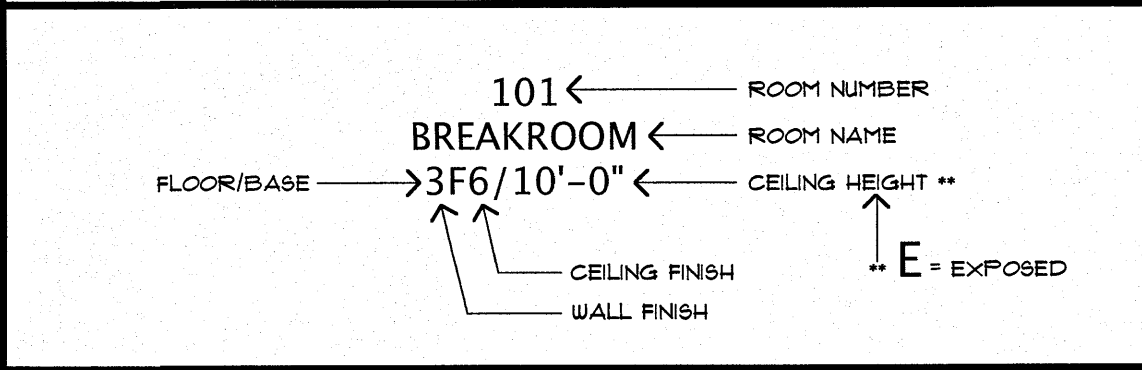
- GENERAL NOTES:**
1. ALL JOINTS AND PENETRATIONS ARE CAULKED, GASKETED, OR COVERED WITH A MOISTURE VAPOR-PERMEABLE WRAPPING MATERIAL INSTALLED IN ACCORDANCE WITH THE MANUFACTURER'S INSTALLATION INSTRUCTIONS.
  2. WINDOWS, DOORS, AND SKYLIGHTS CERTIFIED AS MEETING LEAKAGE REQUIREMENTS.
  3. COMPONENT R-VALUES AND U-FACTORS LABELED AS CERTIFIED.
  4. INSULATION INSTALLED ACCORDING TO MANUFACTURER'S INSTRUCTIONS, IN SUBSTANTIAL CONTACT WITH THE SURFACE BEING INSULATED, AND IN A MANNER THAT ACHIEVES THE RATED R-VALUE WITHOUT COMPRESSING THE INSULATION.
  5. OUTDOOR AIR TAKE AND EXHAUST OPENINGS IN THE BUILDING ENVELOPE ARE EQUIPPED WITH MOTORIZED DAMPERS.
  6. RECESSED LIGHTING FIXTURES ARE: (1) TYPE IC RATED AND SEALED OR GASKETED; OR (2) INSTALLED INSIDE AN APPROPRIATE AIR-TIGHT ASSEMBLY WITH A 0.5 INCH CLEARANCE FROM COMBUSTIBLE MATERIALS AND WITH 3 INCHES CLEARANCE FROM INSULATION MATERIAL.
  7. PROVIDE FIRE EXTINGUISHERS AND FIRE EXTINGUISHER CABINETS AS SHOWN.
  8. PROVIDE R30 INSULATION ABOVE SHEET ROCK.
  9. PROVIDE 1.5" RIGID INSULATION BELOW METAL DECK AT ROOF.
  10. PROVIDE R19 INSULATION IN ALL EXTERIOR WALLS AND ALL WALLS SHARED WITH ADJACENT TENANTS.



**D.1 FLOOR PLAN**  
SCALE: 1/4" = 1'-0"



**D.11 INTERIOR ELEVATIONS**  
SCALE: 3/8" = 1'-0"



NO.	REVISIONS/SUBMISSIONS	DATE

**Lynn Guidry**  
ARCHITECT

411 ARCADEUX ROAD CARENCRO LOUISIANA 70530  
PHONE: 337-836-6685 FAX: 337-836-1499 EMAIL: LYNN@LYNNGUIDRYARCHITECT.COM



**A.1 SOUTH ELEVATION**  
SCALE: 1/4" = 1'-0"

**FINISH SCHEDULE**

FLOOR/BASE	WALL	CEILING
1 VCT14 VNYL	A PAINTED GYPSUM BOARD	1 2' x 2' S.A.T.
2 CARPET/4" VNYL	B 4'-0" HIGH WANSICOT WITH GYPSUM BOARD ABOVE.	2 EXPOSED
3 CERAMIC TILE	C EXPOSED	3 PAINTED GYPSUM BOARD
4 CONCRETE	D	4
5	E	5
6	F	6
7	G	7

**WESTMARK CENTER**  
2009  
WESTMARK BOULEVARD LAFAYETTE, LOUISIANA

**TENANT IMPROVEMENTS:  
TREASURED MEMORIES**

Designed	LCG	Project No.	2009.001
Drawn	LCM	Scale	AS NOTED
Checked		Drawing No.	A.140
Reviewed			
Date	3 JULIO		

