



CORPORATE REALTY

201 St. Charles Ave., Suite 3811, New Orleans, LA 70170
504.581.5005 | corp-realty.com

OFFICE SPACE | FOR LEASE

Move-In Ready Office Space in Lakeview

6050 Pontchartrain Blvd

NEW ORLEANS, LA 70124

Andrea Arons Huseman CCIM
ahuseman@corp-realty.com
504.587.1450

Jeff Cohn
jcohn@corp-realty.com
504.581.5005



HIGHLY VISIBLE LOCATION PLUS MONUMENT SIGNAGE

6050 Pontchartrain Blvd, New Orleans, LA 70124

PROPERTY DESCRIPTION

Office space is now available in this exceptional Lakeview location. The 2,320-sf ground floor suite consists of private offices with windows, an open work area, two ADA restrooms, and a kitchen. The 767-sf second floor suite consists of a private office, a large conference/shared workroom, and an ADA restroom.

These office suites come with 11 off-street parking spaces in a shared lot, as well as opportunity for inclusion on the highly visible monument signage.

Built in 2015, 6050 Pontchartrain Blvd is a 5,000-sf, two-story office building with elevator. Its location at the signalized intersection of Pontchartrain Blvd and 14th Street, just two blocks from Veterans Memorial Blvd and one block from West End Blvd, provides ease of access throughout both New Orleans and Metairie.

Furniture is not included.

PROPERTY OVERVIEW

SIZE	2,320 usable square feet on 1st floor 767 usf on 2nd floor
RENTAL RATE	\$26.00/sf, NNN
PARKING	11 parking spaces in an off-street lot shared with co-tenants
AVAILABILITY	October 1, 2025



CORPORATE REALTY

Andrea Arons Huseman ccim
ahuseman@corp-realty.com
504.587.1450

Jeff Cohn
jcohn@corp-realty.com
504.581.5005

6050 PONTCHARTRAIN BLVD

FIRST FLOOR SUITE



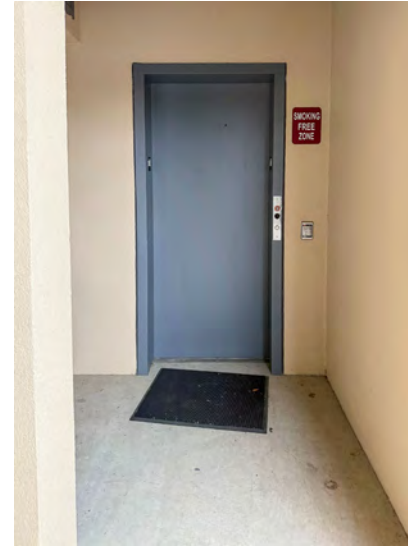
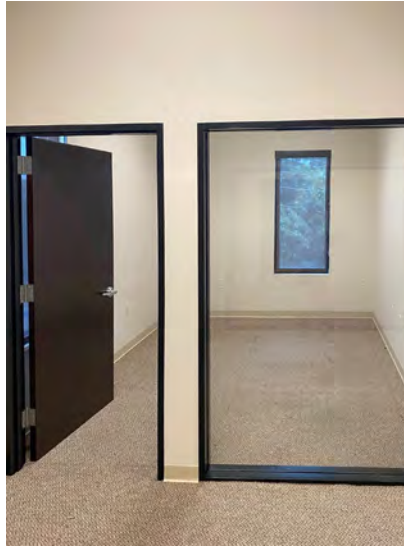
CORPORATE REALTY

Andrea Arons Huseman ccim
ahuseman@corp-realty.com
504.587.1450

Jeff Cohn
jcohn@corp-realty.com
504.581.5005

6050 PONTCHARTRAIN BLVD

SECOND FLOOR SUITE



CORPORATE REALTY

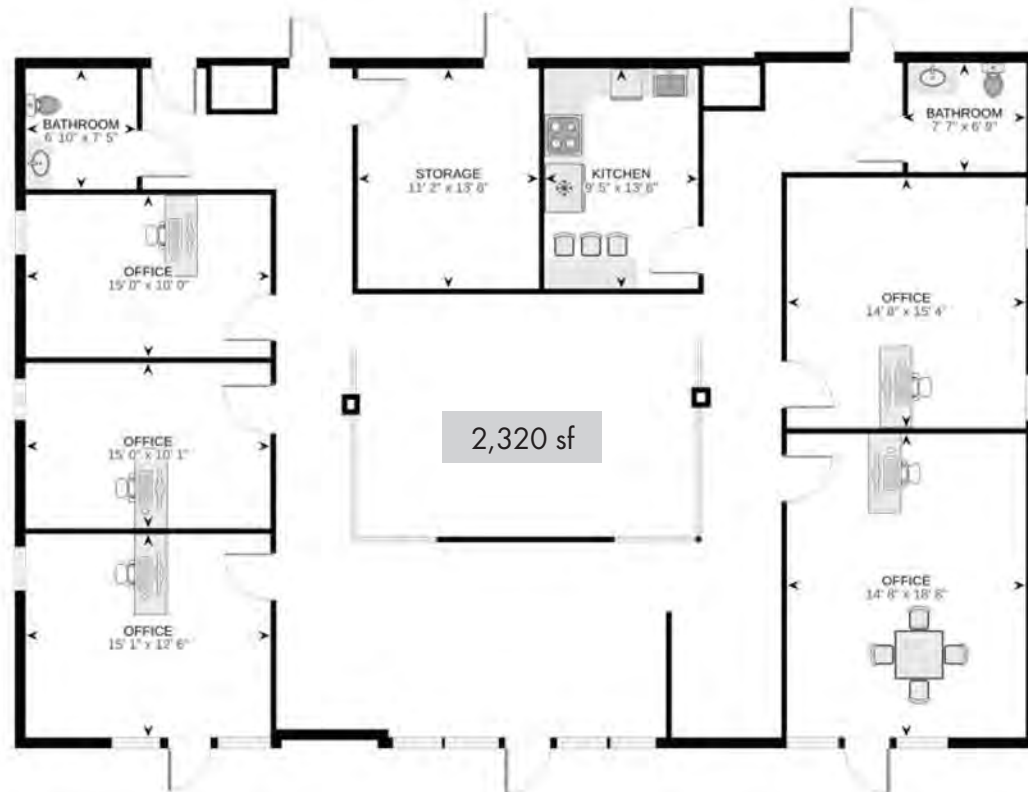
Andrea Arons Huseman CCIM
ahuseman@corp-realty.com
504.587.1450

Jeff Cohn
jcohn@corp-realty.com
504.581.5005

6050 PONTCHARTRAIN BLVD

FLOOR PLANS

FIRST FLOOR



SECOND FLOOR



CORPORATE REALTY

Andrea Arons Huseman CCIM
ahuseman@corp-realty.com
504.587.1450

Jeff Cohn
jcohn@corp-realty.com
504.581.5005

OFFICE SPACE | FOR LEASE

Move-In Ready Office Space in Lakeview

6050 Pontchartrain Blvd, New Orleans, LA 70124



Andrea Arons Huseman CCIM
ahuseman@corp-realty.com
504.587.1450



Jeff Cohn
jcohn@corp-realty.com
504.581.5005



CORPORATE REALTY

201 St. Charles Ave., Suite 3811, New Orleans, LA 70170
504.581.5005 | corp-realty.com

The information contained herein has been obtained from sources that we deem reliable. No representation or warranty is made as to the accuracy thereof, and it is submitted subject to errors, omissions, change of price, or other conditions, or withdrawal without notice. Licensed in Louisiana, 4/2025