



OFFICE/WAREHOUSE FOR LEASE

2120 GRAND CAILLOU RD | HOUMA, LA



BUILDING AREA

Approximately 12,370 square feet of grade level office/warehouse with yard.

Can be combined with 2108 Grand Caillou Rd, for a combined 22,660 sq. ft. +/-.

YARD AREA

Approximately 8,500 sq. ft. yard area

ZONING

Industrial

LOADING

Grade level via three (3) overhead doors.

OFFICE AREA

Approximately 1,500 sq. ft. office area.

LEASE RATE

\$4.50 per sq. ft., triple net.

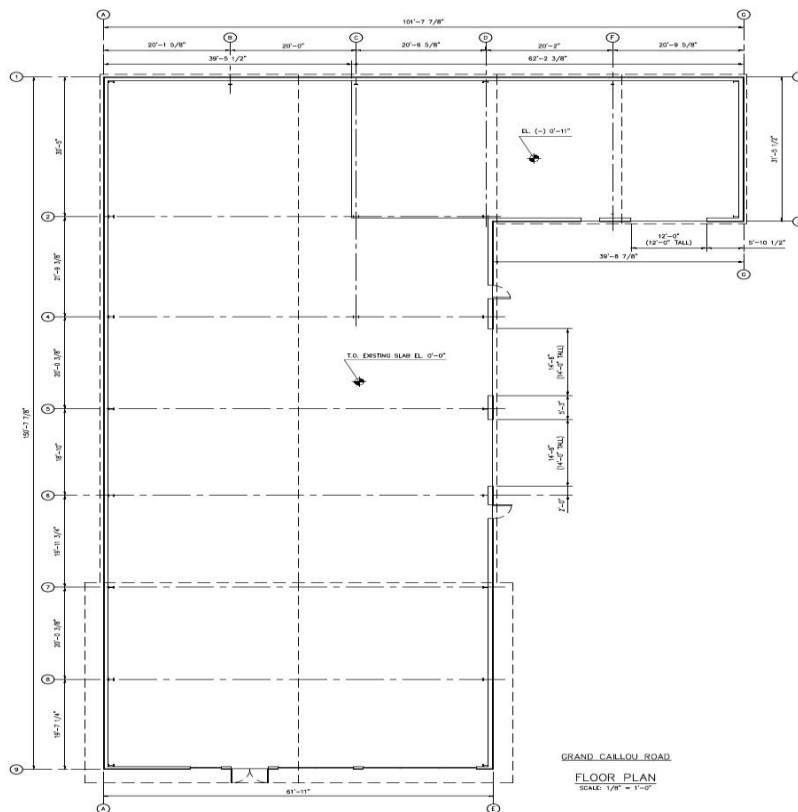
Max J. Derbes, Inc.
REALTORS ■

CONTACT
JACK QUINN, CCIM

OFFICE 504.210-1349
CELL 504.236-4949
jack@maxderbes.com

Max J. Derbes, Inc.
5440 Mounes Street, Ste 100
New Orleans, LA 70123





Nuss Services, LLC
EMAIL: NUSS-SERVICES@GMAIL.COM
OFFICE: (504) 810-5029

THESE DRAWINGS ARE NOT TO BE
SCALED FROM, SCHEDULES,
NOTES, AND DIMENSIONS SHOULD
BE FOLLOWED AND NOT SCALED

2120 Grand Caillou Road
Houma, LA 70363

THE DESIGN CONCEPTS REPRESENTED BY THIS DOCUMENT ARE SPECIFICALLY FOR THIS PROJECT. INFORMATION CONTAINED HEREIN IS THE SOLE PROPERTY OF NUS SERVICES, LLC AND SHALL NOT BE COPIED, REPRODUCED OR OTHERWISE TRANSMITTED TO ANY OTHER PERSON OR DOCUMENTS, USED FOR ANY OTHER PURPOSE WHATSOEVER WITHOUT THE EXPRESS WRITTEN CONSENT OF NUS SERVICES, LLC.

REVISIONS:

TITLE:

TITLE:

FLOOR
PLAN

ISSUED DATE:	01/23/2017
DRAWN BY:	JRN
CHECKED BY:	
PROJECT #:	24027

A1.0

Max J. Derbes, Inc.
REALTORS ■

CONTACT
JACK QUINN, CCIM

OFFICE 504.210-1349
CELL 504.236-4949
jack@maxderbes.com

Max J. Derbes, Inc.
5440 Mounes Street, Ste 100
New Orleans, LA 70123

