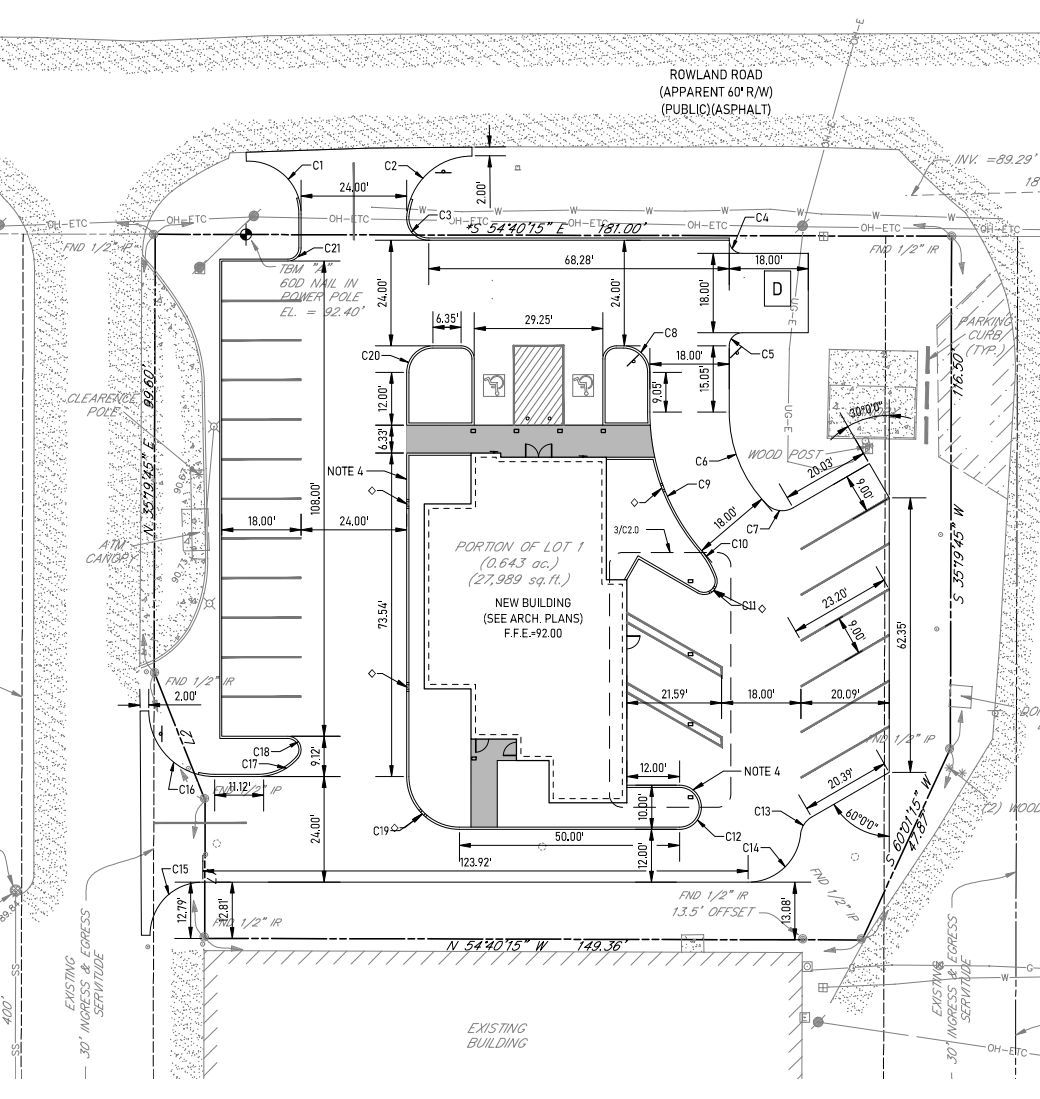
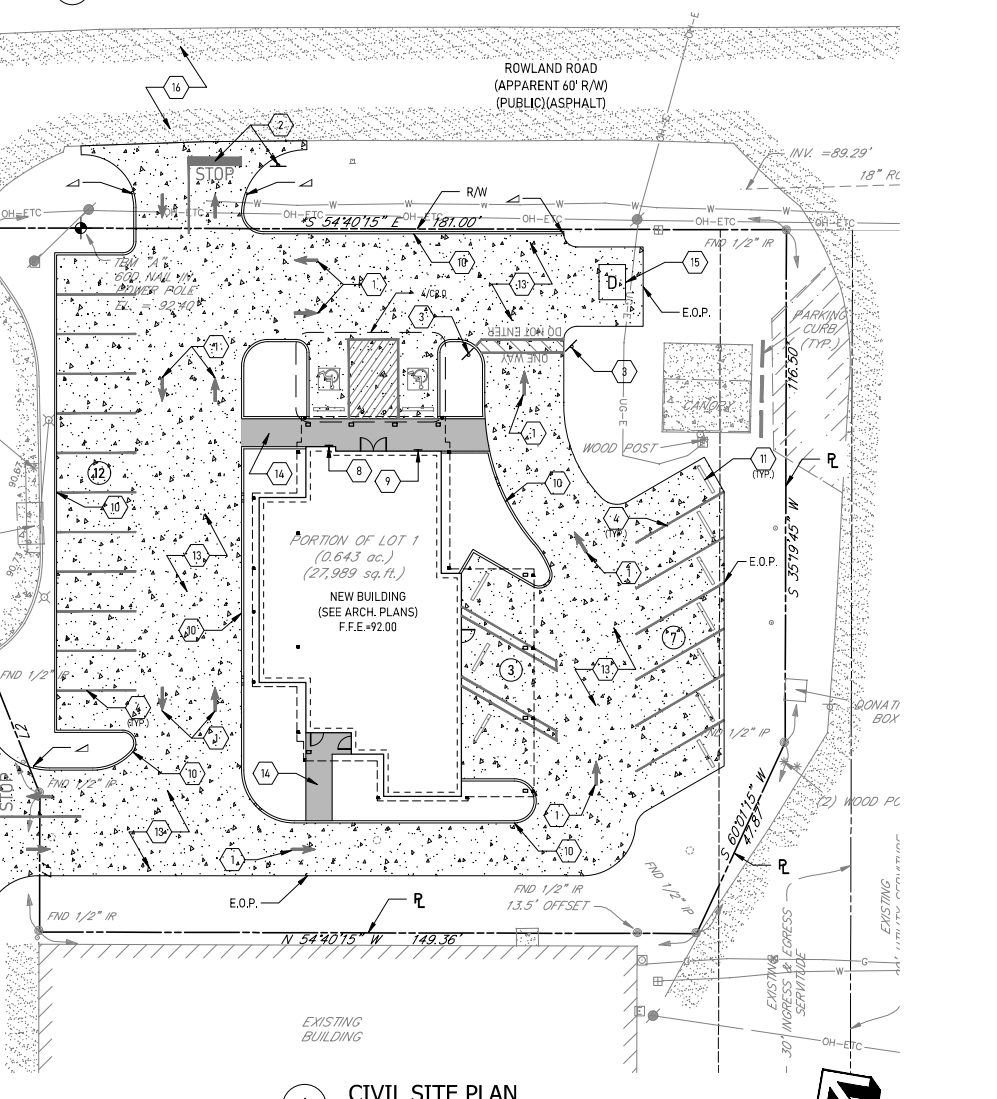
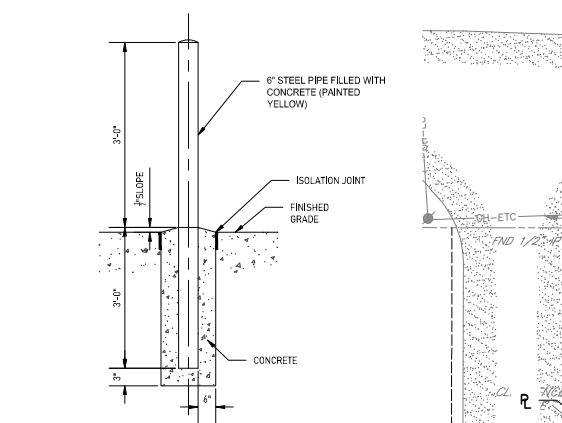
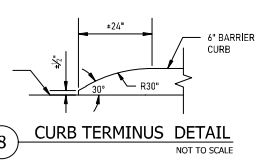
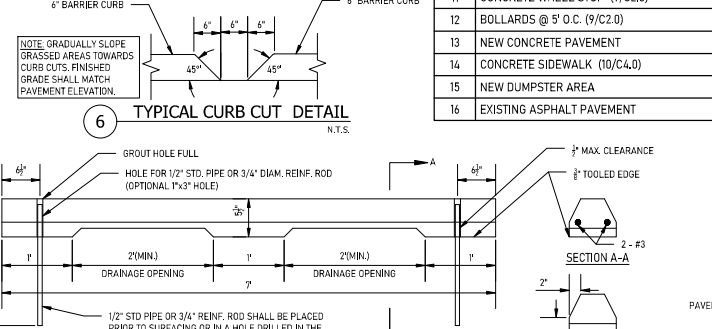
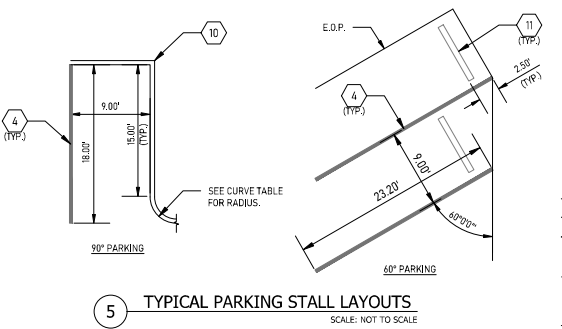


KEYED NOTES	
1	YELLOW TRAFFIC FLOW ARROWS (13/C4.0)
2	END OF LANE MARKINGS & SIGN (R1-1, 30"x30") (12/C4.0)
3	*DO NOT ENTER* SIGN (R5-1, 30"x30")
4	4" SOLID YELLOW STRIPE
5	8" SOLID BLUE STRIPE
6	8" BLUE STRIPE 4" O.C. @ 45°
7	PAINTED INTERNATIONAL SYMBOL OF ACCESS (14/C4.0)
8	HANDICAPPED PARKING SIGN (15/C4.0)
9	HANDICAPPED PARKING VAN ACCESSIBLE SIGN (15/C4.0)
10	6" BARRIER CURB (9/C4.0)
11	CONCRETE WHEEL STOP (7/C2.0)
12	BOLLARDS @ 9" O.C. (9/C2.0)
13	NEW CONCRETE PAVEMENT
14	CONCRETE SIDEWALK (10/C4.0)
15	NEW DUMPSTER AREA
16	EXISTING ASPHALT PAVEMENT

LEGEND	
PARKING CURB	#
KEYED NOTE	#
BARRIER CURB	[Symbol]
WHEEL STOP	[Symbol]
CURB CUTS (6/C2.0)	[Symbol]
CURB TERMINUS (8/C2.0)	[Symbol]
PROPOSED CONCRETE SIDEWALK (4")	[Symbol]
PROPOSED CONCRETE PAVEMENT	[Symbol]
EXISTING ASPHALT PAVEMENT	[Symbol]
EXISTING CONCRETE PAVEMENT	[Symbol]
PROPERTY LINE	R
RIGHT OF WAY	R/W
EDGE OF PAVEMENT	E.O.P.

CURVE TABLE					
CURVE #	LENGTH	RADIUS	Δ	CHORD DIRECTION	CHORD LENGTH
C1	19.27'	12.00'	92° 00' 31"	N11° 11' 10"W	17.27'
C2	22.19'	15.00'	84° 45' 54"	S81° 58' 19"W	20.22'
C3	8.27'	5.00'	94° 46' 17"	S7° 47' 46"E	7.36'
C4	4.71'	3.00'	90° 00' 00"	S10° 10' 55"E	4.24'
C5	4.71'	3.00'	90° 00' 00"	S79° 49' 06"W	4.24'
C6	23.17'	30.00'	44° 40' 42"	S12° 45' 15"W	22.54'
C7	6.62'	5.00'	75° 52' 18"	S47° 14' 45"E	6.15'
C8	9.42'	6.00'	90° 00' 00"	N10° 10' 54"W	8.49'
C9	33.95'	48.00'	40° 31' 32"	N14° 33' 19"E	33.25'
C10	7.27'	20.00'	20° 48' 52"	N4° 41' 59"E	7.23'
C11	7.03'	3.00'	134° 21' 00"	N82° 16' 55"E	5.53'
C12	15.71'	5.00'	180° 00' 00"	N34° 49' 06"E	10.00'
C13	4.77'	5.00'	54° 40' 19"	S67° 28' 56"W	4.59'
C14	17.73'	12.00'	84° 40' 19"	S82° 28' 56"W	16.16'
C15	18.92'	12.00'	90° 19' 09"	S79° 39' 31"W	17.02'
C16	23.48'	15.00'	89° 40' 51"	S10° 20' 29"E	21.15'
C17	10.31'	12.00'	49° 13' 09"	S79° 47' 29"E	9.99'
C18	6.85'	3.00'	130° 44' 51"	N10° 12' 31"E	5.45'
C19	18.85'	12.00'	90° 00' 00"	S10° 10' 54"E	16.97'
C20	9.42'	6.00'	90° 00' 00"	S79° 49' 06"W	8.49'
C21	4.71'	3.00'	90° 00' 00"	N79° 49' 06"E	4.24'



GENERAL NOTES:

- INFORMATION DEPICTING THE EXISTING CONDITIONS HEREON WAS TAKEN FROM "MAP SHOWING BOUNDARY & TOPOGRAPHIC SURVEY OF A PORTION OF LOT 1 BEING A PORTION OF PARKWOOD VILLAGE SHOPPING CENTER SUBDIVISION LOCATED IN SECTION 13, T-18-N, R-4-E, NORTH OF RED RIVER LAND DISTRICT, ORLEANS PARISH, LOUISIANA FOR FERRARI-DEVELOPMENT, INC." BY LANDSOURCE, INC. FOX-NESBIT ENGINEERING, LLC HAS NOT FIELD-VERIFIED THE ITEMS IDENTIFIED ON THIS SURVEY.
- IN ACCORDANCE WITH FEMA FLOOD INSURANCE RATE MAP PANEL 22073C0707, EFFECTIVE ON JANUARY 20, 2016, THIS PROPERTY IS LOCATED IN FLOOD ZONE "X". FLOOD ZONE INFORMATION SHALL BE CONFIRMED WITH THE DEPARTMENT OF PUBLIC WORKS.
- IN ACCORDANCE WITH STATE LAW, THE CONTRACTOR SHALL NOTIFY ALL UTILITY COMPANIES A MINIMUM OF 48 HOURS PRIOR TO COMMENCEMENT OF ANY DEMOLITION OR CONSTRUCTION TO HAVE THEIR UTILITIES LOCATED IN THE FIELD. CONTRACTOR SHALL MAKE REQUEST THROUGH LOUISIANA ONE CALL (811).

SITE PLAN & GEOMETRIC LAYOUT NOTES:

- WHERE CURVE DATA IS NOT SHOWN, CURVES SHALL HAVE A TOTAL ANGLE OF 90°.
- DIMENSIONS FROM SHOWN PROPERTY BOUNDARIES ARE TAKEN TO THE BACK OF CURB. ALL OTHER DIMENSIONS & ALL CURVE DATA ARE TAKEN TO THE FACE OF CURB.
- ALL PROPOSED SIGNAGE & PAVEMENT STRIPING SHALL CONFORM TO THE CURRENT EDITION OF THE MUT.C.D.
- SEE GRADING PLAN FOR LIMITS OF CURB HEIGHT TRANSITIONS.

PARKING SUMMARY TABLE					
PROPOSED LAND USE	REQ'D PARKING RATIO	PROPOSED UNITS	# OF STALLS REQ'D	# OF STALLS PROVIDED	# OF ADA STALLS REQ'D
MEDICAL CLINIC	1.5 STALLS PER EXAM ROOM	5	8 STALLS	22 STALLS	1
					2

Office Information:
Main Office: 225.412.0048
Fax: 225.412.0049
MKE Architects.com
9800 Airline Hwy,
Suite 217
Baton Rouge, LA 70816
Contact: Kirk Edwards, AIA

Consultants Information:
Civil:
Fox-Nesbit Engineering, LLC
9100 Bluebonnet Center Blvd,
Suite 301
Baton Rouge, LA 70809
(225) 293-6595
Contact: Scott Heil, PE

Mechanical and Electrical:
GSE, INC.
1816 Pass Road
Gulport, MS 39501
(228) 864-5050
Contact: Justin Thibodeaux, PE

Structural:
Forte and Tablada
9107 Interline Avenue
Baton Rouge, LA 70809
(225) 927-9321
Contact: Jason Fennell, PE

Project Title:
ST. FRANCIS URGENT CARE

Project Location:
ROWLAND ROAD
SWARTZ, LA 71203
Sheet Revisions:

Sheet Name:
CIVIL SITE PLAN & GEOMETRIC LAYOUT

Seal



Project Number:
21-24 A

Date:
JUNE 1, 2022

Document Phase:
CONSTRUCTION DOCUMENTS

Sheet Number:
C2.0

FOX-NESBIT
BATON ROUGE NEW ORLEANS
225-293-6595
www.fox-nesbit.com
© 2022 21413 C3D21

2022.08.11_ISSUE FOR CONSTRUCTION