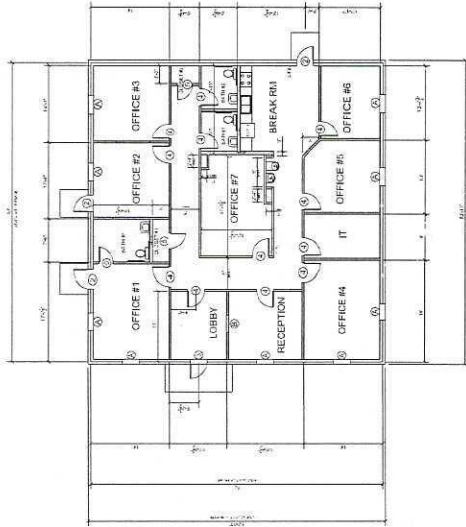
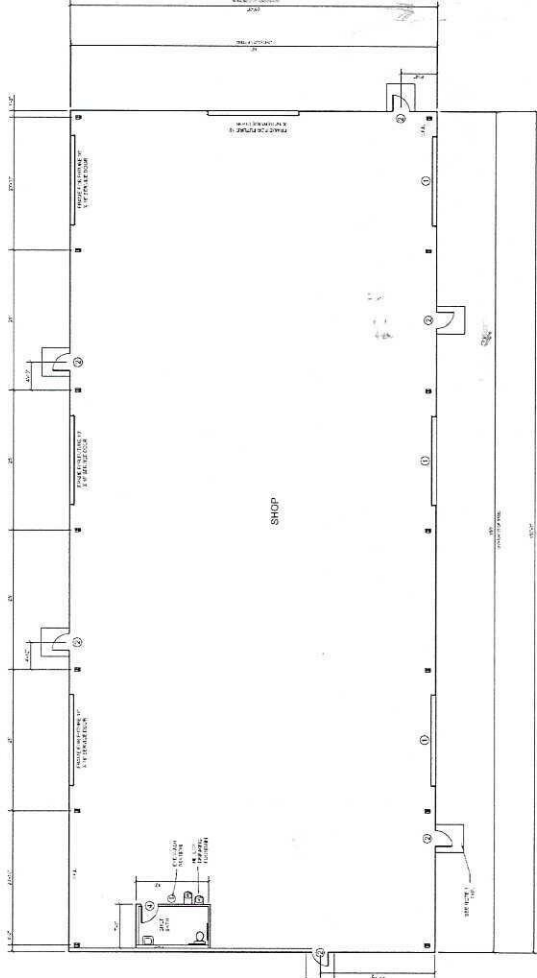


**NOTES:**

- CONSTRUCT A 6" X 4" THICK REINFORCED CONCRETE LANDING SLAB AT EXTERIOR PASSAGE DOORS. SLAB AT EXTERIOR SIDE OF DOOR SHALL BE A MAXIMUM OF 3" BELOW LEVEL OF INTERIOR FLOOR SLAB AND SLOPE A MAXIMUM OF 1/4" PER FOOT AWAY FROM FACE OF DOOR.
- FURNISH AND INSTALL 1" STAINLESS STEEL GRAB BARS OF LENGTH SHOWN AND MOUNTED 36" ABOVE FINISHED FLOOR. START BARS 6" FROM CORNER IN EACH DIRECTION.
- \* RANGE FOR WARNING PURPOSES ONLY.



**OFFICE FLOOR PLAN**  
1" = 10'



**SHOP FLOOR PLAN**  
1" = 10'

MARK	QUAN	SIZE	DESCRIPTION
1	1	160" X 160"	ROLL UP STEEL SERVICE DOOR
2	1	36" X 60" X 1 1/2"	GLASS AND ALUMINUM ENTRY DOOR
3	1	36" X 60" X 1 1/2"	GLASS AND ALUMINUM ENTRY DOOR WITH TRANSPARENT ENTRANCE DOOR WITH TRANSPARENT FRAME ENT. MESSAGE AND GLASS
4	1	50" X 70" X 1 1/2"	FLUSH SOLID CORE WOOD DOOR
5	3	24" X 36" X 1 1/2"	FLUSH SOLID CORE WOOD DOOR

MARK	QUAN	SIZE	DESCRIPTION
A	3	36" X 60"	SHAKE UP TRANSPARENT LOW E GLASS 2 1/2" DIA 1
B	1	36" X 60"	TRANSPARENT GLASS ALUMINUM ENTRY WINDOW

**DOOR SCHEDULE**

MARK	QUAN	SIZE	DESCRIPTION
1	1	160" X 160"	ROLL UP STEEL SERVICE DOOR
2	1	36" X 60" X 1 1/2"	GLASS AND ALUMINUM ENTRY DOOR
3	1	36" X 60" X 1 1/2"	GLASS AND ALUMINUM ENTRY DOOR WITH TRANSPARENT ENTRANCE DOOR WITH TRANSPARENT FRAME ENT. MESSAGE AND GLASS
4	1	50" X 70" X 1 1/2"	FLUSH SOLID CORE WOOD DOOR
5	3	24" X 36" X 1 1/2"	FLUSH SOLID CORE WOOD DOOR

**WINDOW SCHEDULE**

MARK	QUAN	SIZE	DESCRIPTION
A	3	36" X 60"	SHAKE UP TRANSPARENT LOW E GLASS 2 1/2" DIA 1
B	1	36" X 60"	TRANSPARENT GLASS ALUMINUM ENTRY WINDOW

ROOM NAME	FLOOR	WALLS	CEILING	BASE	CEILING HT
SHOP	CONCRETE	VINYL BACKED INSULATION	VINYL BACKED INSULATION	ROCKE	10 FT
OFFICE #1	VCT TILE	PAINTED 8" OYSMAM	PAINTED 8" OYSMAM	4" VINYL	10 FT
OFFICE #2	VCT TILE	PAINTED 8" OYSMAM	PAINTED 8" OYSMAM	4" VINYL	10 FT
OFFICE #3	VCT TILE	PAINTED 8" OYSMAM	PAINTED 8" OYSMAM	4" VINYL	10 FT
OFFICE #4	VCT TILE	PAINTED 8" OYSMAM	PAINTED 8" OYSMAM	4" VINYL	10 FT
OFFICE #5	VCT TILE	PAINTED 8" OYSMAM	PAINTED 8" OYSMAM	4" VINYL	10 FT
OFFICE #6	VCT TILE	PAINTED 8" OYSMAM	PAINTED 8" OYSMAM	4" VINYL	10 FT
BATH #1	VCT TILE	PAINTED 8" OYSMAM	PAINTED 8" OYSMAM	4" VINYL	10 FT
BATH #2	VCT TILE	PAINTED 8" OYSMAM	PAINTED 8" OYSMAM	4" VINYL	10 FT
BATH #3	VCT TILE	PAINTED 8" OYSMAM	PAINTED 8" OYSMAM	4" VINYL	10 FT
RECEPTION	VCT TILE	PAINTED 8" OYSMAM	PAINTED 8" OYSMAM	4" VINYL	10 FT
IT	VCT TILE	PAINTED 8" OYSMAM	PAINTED 8" OYSMAM	4" VINYL	10 FT
CLOSET #1	VCT TILE	PAINTED 8" OYSMAM	PAINTED 8" OYSMAM	4" VINYL	10 FT
CLOSET #2	VCT TILE	PAINTED 8" OYSMAM	PAINTED 8" OYSMAM	4" VINYL	10 FT

PROJECT NO:	201501
DATE:	5/6/2016
DESIGNED BY:	DI
DRAWN BY:	DI
REVISION #:	0
SHEET:	COF-14

**FLOOR PLAN**

**ISTRE ENGINEERING SERVICES, INC.**  
 6721 PERCY RD.  
 METairie, LA 70002  
 PHONE: 504-885-1015  
 FAX: 504-885-1016  
 istre@istre-engineering.com

**KARL A. LAVIOLLETTE**  
 50' X 50' OFFICE \ 65' X 150' SHOP  
 BEAU PRAE ROAD