



OFFICE WAREHOUSE W/FENCED YARD FOR LEASE
1001 HARIMAW COURT EAST | METAIRIE, LA



BUILDING DESCRIPTION

3,750 sq. ft. building including 1,200 +/- sq. ft. of renovated office space

WAREHOUSE

Ground level loading via two 10' x 10' metal overhead doors and an attached covered bay of 760 sq. ft. at the rear of the building

ZONING

IL (Formerly M-1, Industrial District)

ADDITIONAL

Property has great exposure fronting Earhart Expressway, The site has ample parking and is fully paved and fenced. The warehouse has an insulated roof and ceiling mounted exhaust fan

AVAILABLE

October 1, 2025

RENTAL RATE

\$4,800/month, net of expenses (\$15.36 psf)
Expenses are \$4.12 +/- psf

Max J. Derbes, Inc.
REALTORS ■

CONTACT
BERT DUVIC, CCIM, SIOR

OFFICE 504.733.4555
bertd@maxderbes.com

Max J. Derbes, Inc.
5440 Mounes Street, Ste 100
New Orleans, LA 70123





OFFICE WAREHOUSE W/FENCED YARD FOR LEASE
1001 HARIMAW COURT EAST | METAIRIE, LA

AERIAL



Max J. Derbes, Inc.
REALTORS ■

CONTACT
BERT DUVIC, CCIM, SIOR

OFFICE 504.733.4555
bertd@maxderbes.com

Max J. Derbes, Inc.
5440 Mounes Street, Ste 100
New Orleans, LA 70123



OFFICE WAREHOUSE W/FENCED YARD FOR LEASE
1001 HARIMAW COURT EAST | METAIRIE, LA

FLOORPLAN

Fenced Yard Area

72.50'



Max J. Derbes, Inc.
REALTORS ■

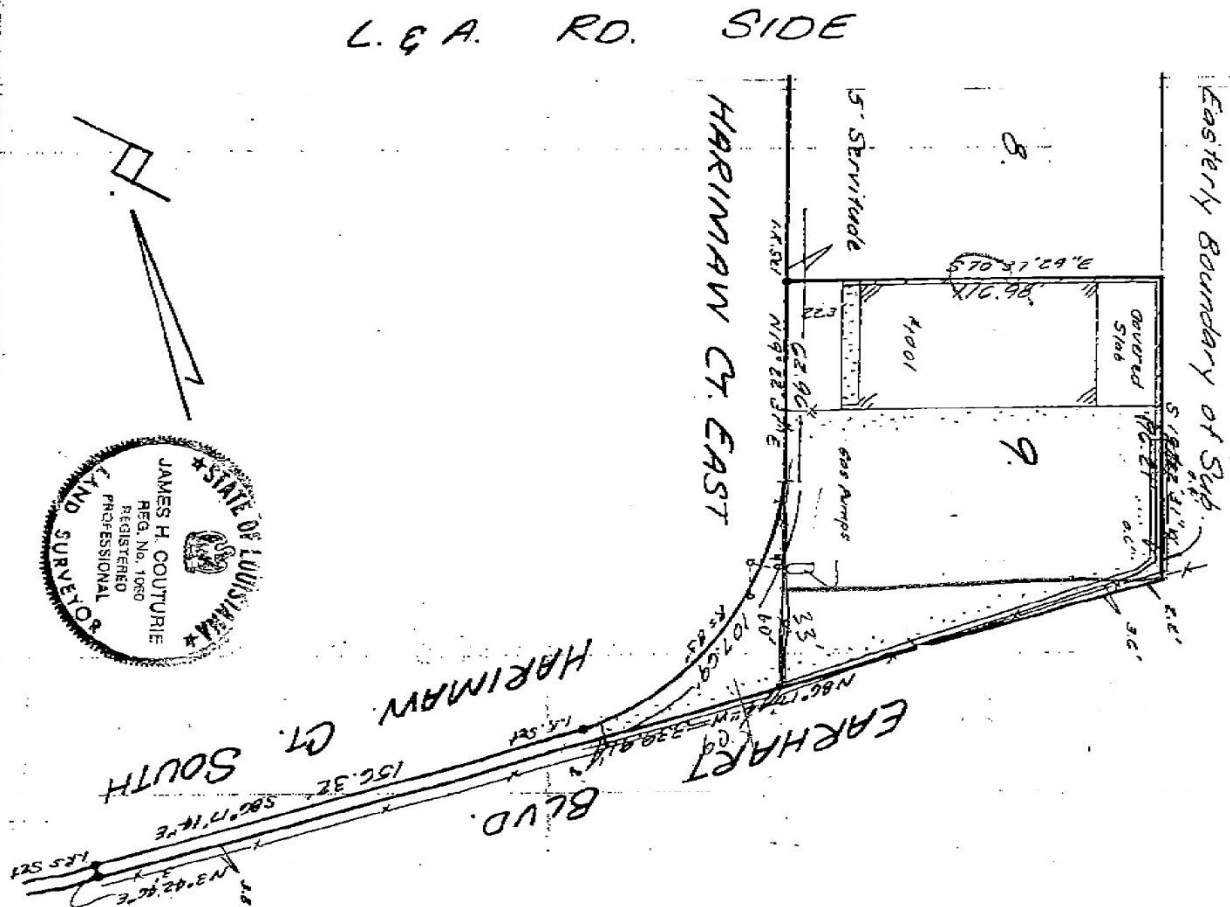
CONTACT
BERT DUVIC, CCIM, SIOR

OFFICE 504.733.4555
bertd@maxderbes.com

Max J. Derbes, Inc.
5440 Mounes Street, Ste 100
New Orleans, LA 70123



SQ. NO. 3, LABARRE BUSINESS PARK, SEC. 2
JEFFERSON PARISH, LA.



THE SERPENTIDES SHOWN ON THIS PLAT ARE LIMITED TO THOSE FURNISHED TO US. THERE IS NO REPRESENTATION THAT ALL APPLICABLE SERPENTIDES ARE SHOWN HEREON. THE SIRETOR HAS MADE NO TITLE SEARCH OR PUBLIC RECORD SEARCH IN COMPILING DATA FOR THIS SIRETOR.

Date: 3/10/2000

THE FEDERAL INSURANCE ADMINISTRATOR'S FLOOD HAZARD
BOUNDARY MAP INDICATES THAT THE ABOVE DESCRIBED
PROPERTY IS LOCATED IN FIA ZONE A-1. 0-10

Scale: 1"=40'

This plot represents an actual ground survey made by me or under my direct supervision and control and meets the requirements for the Minimum Standards for Property Boundary Surveys as found in Louisiana Administrative Code TITLE 46:IX, Chapter 25 for a Class "B" survey.
Made at the request of Bruce McIlwain (Chicago, Illinois, & Cleveland)

Gilbert, Kelly & Couture, Inc., Surveying & Engineering
2121 N. Cousins Blvd., Metairie LA 70001
James H. Kelly