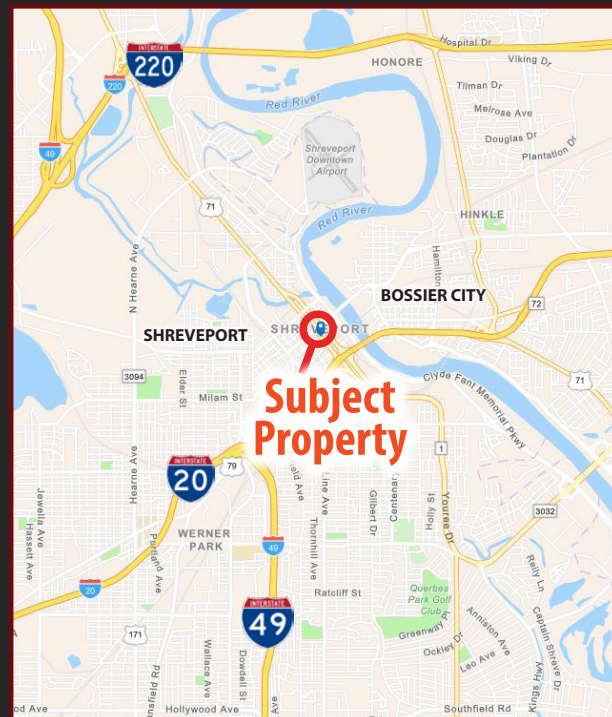




HISTORIC DOWNTOWN OFFICE BUILDING FOR SALE

204 MILAM STREET, SHREVEPORT, LA 71101

- 3,292± sq.ft. Two-Story Building
- Located in the Red River District adjacent to multiple restaurants, bars, and retail shops
- 5 completed Office Suites with Reception Area and Breakroom
- 2 additional Office Suites upstairs in need of renovation or used for storage
- Parking available in rear of building
- Zoned D-1-E (Downtown Entertainment District)
- Offered at \$250,000



For more information, contact:

G. Archer Frierson III, CCIM, SIOR | gfrierson@vintagerealty.com | 318.222.2244

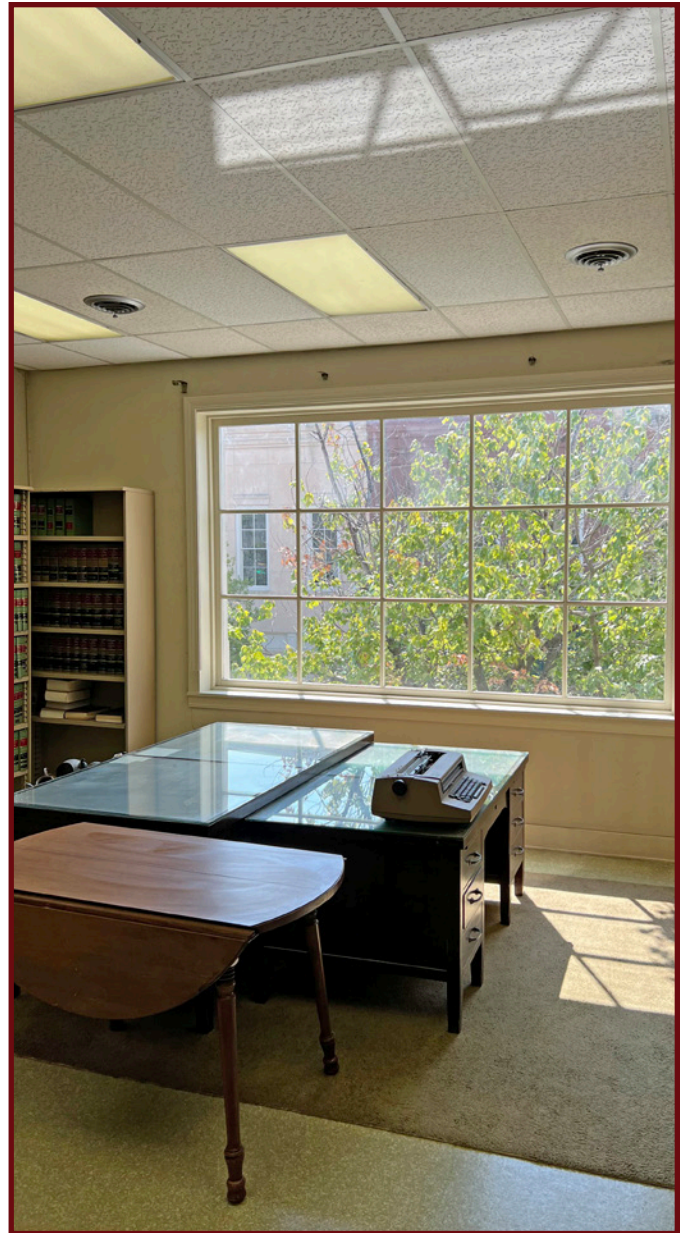
Eric Ricard | ericard@vintagerealty.com | 318.222.2244

ALL INFORMATION CONTAINED HEREIN IS BELIEVED TO BE ACCURATE, BUT IS NOT WARRANTED AND NO LIABILITY OF ERRORS OR OMISSIONS IS ASSURED BY EITHER THE PROPERTY OWNER OR VINTAGE REALTY COMPANY OR ITS AGENTS AND EMPLOYEES. PRICES AS STATED HEREIN AND PRODUCT AVAILABILITY IS SUBJECT TO CHANGE AND/OR SALE OR LEASE WITHOUT PRIOR NOTICE, AND ALL SIZES AND DIMENSIONS ARE SUBJECT TO CORRECTION. REV 8/2023



HISTORIC DOWNTOWN OFFICE BUILDING FOR SALE

204 MILAM STREET
SHREVEPORT, LA 71101



For information, please contact:

G. Archer Frierson III, CCIM, SIOR | gfrierson@vintagerealty.com | 318.222.2244

Eric Ricard | ericard@vintagerealty.com | 318.222.2244

ALL INFORMATION CONTAINED HEREIN IS BELIEVED TO BE ACCURATE, BUT IS NOT WARRANTED AND NO LIABILITY OF ERRORS OR OMISSIONS IS ASSURED BY EITHER THE PROPERTY OWNER OR VINTAGE REALTY COMPANY OR ITS AGENTS AND EMPLOYEES. PRICES AS STATED HEREIN AND PRODUCT AVAILABILITY IS SUBJECT TO CHANGE AND/OR SALE OR LEASE WITHOUT PRIOR NOTICE, AND ALL SIZES AND DIMENSIONS ARE SUBJECT TO CORRECTION. 8/2023

HISTORIC DOWNTOWN OFFICE BUILDING FOR SALE

204 MILAM STREET
SHREVEPORT, LA 71101



For information, please contact:

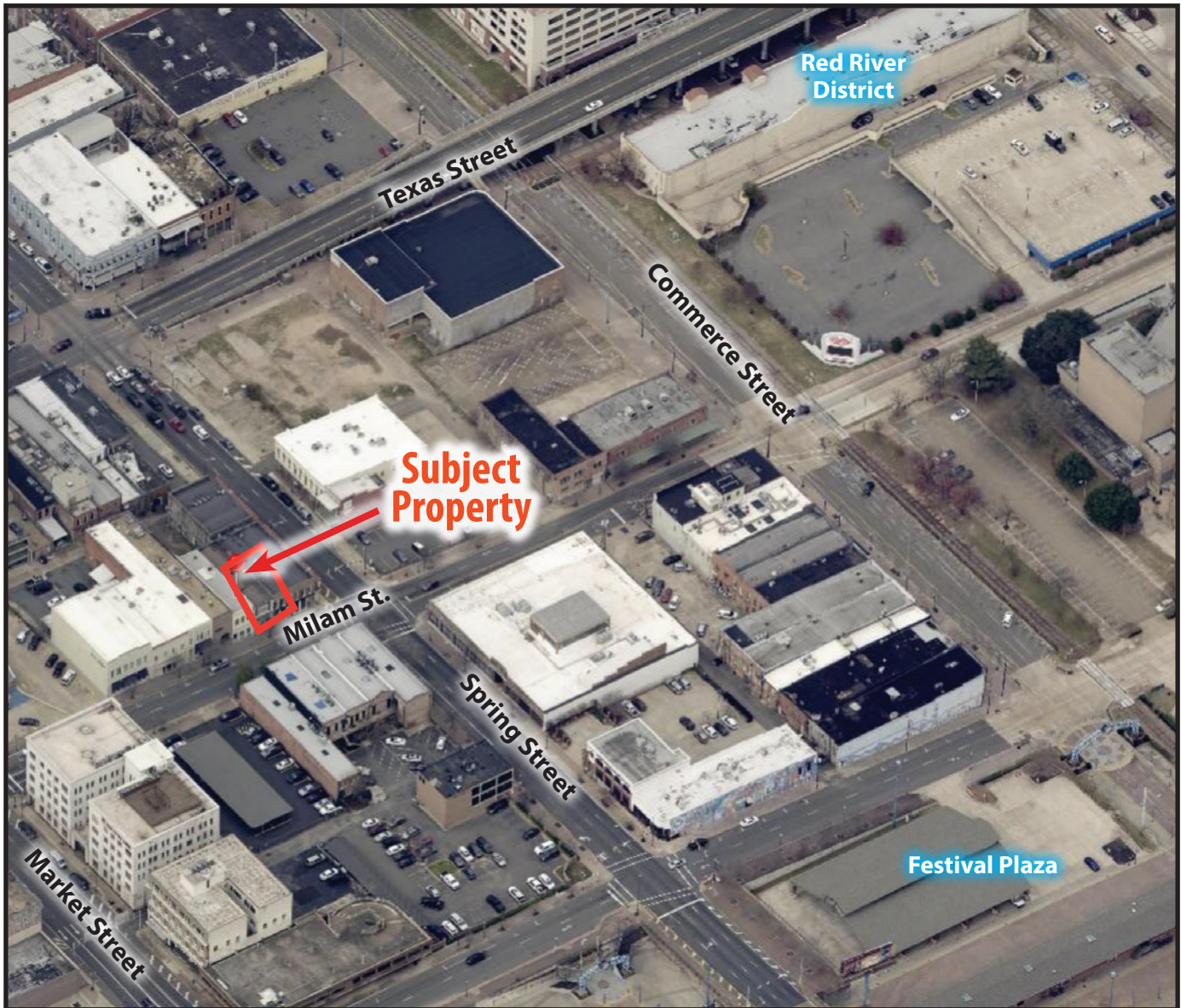
G. Archer Frierson III, CCIM, SIOR | gfrierson@vintagerealty.com | 318.222.2244

Eric Ricard | ericard@vintagerealty.com | 318.222.2244

ALL INFORMATION CONTAINED HEREIN IS BELIEVED TO BE ACCURATE, BUT IS NOT WARRANTED AND NO LIABILITY OF ERRORS OR OMISSIONS IS ASSURED BY EITHER THE PROPERTY OWNER OR VINTAGE REALTY COMPANY OR ITS AGENTS AND EMPLOYEES. PRICES AS STATED HEREIN AND PRODUCT AVAILABILITY IS SUBJECT TO CHANGE AND/OR SALE OR LEASE WITHOUT PRIOR NOTICE, AND ALL SIZES AND DIMENSIONS ARE SUBJECT TO CORRECTION. 8/2023

HISTORIC DOWNTOWN OFFICE BUILDING FOR SALE

204 MILAM STREET
SHREVEPORT, LA 71101



For information, please contact:

G. Archer Frierson III, CCIM, SIOR | gfrierson@vintagerealty.com | 318.222.2244

Eric Ricard | ericard@vintagerealty.com | 318.222.2244

ALL INFORMATION CONTAINED HEREIN IS BELIEVED TO BE ACCURATE, BUT IS NOT WARRANTED AND NO LIABILITY OF ERRORS OR OMISSIONS IS ASSURED BY EITHER THE PROPERTY OWNER OR VINTAGE REALTY COMPANY OR ITS AGENTS AND EMPLOYEES. PRICES AS STATED HEREIN AND PRODUCT AVAILABILITY IS SUBJECT TO CHANGE AND/OR SALE OR LEASE WITHOUT PRIOR NOTICE, AND ALL SIZES AND DIMENSIONS ARE SUBJECT TO CORRECTION. 8/2023