



CORPORATE REALTY

201 St. Charles Ave., Suite 4411, New Orleans, LA 70170
504.581.5005 | corp-realty.com

COMMERCIAL SPACE | FOR LEASE

Ground Floor Retail Space in Warehouse District

747 St. Charles Avenue

NEW ORLEANS, LA 70130

Mitchell Halpern
mhalpern@corp-realty.com
504.919.5211

Scott Graf CCIM
sgraf@corp-realty.com
504.581.5005



ALONG STREETCAR LINE AND PARADE ROUTE

747 St. Charles Avenue, New Orleans, LA 70130

DESCRIPTION

This 1,642 rsf ground floor retail/office space is now available. The unit's easy flowing, open floor plan features floor-to-ceiling windows facing the street and clerestory windows along one side that flood the space with natural light along this tree-dotted stretch of St. Charles Avenue. Formerly the home of Swiss Confectionery Bakery, the unit is in shell condition and is ready for improvements to meet office or retail needs. 747 St. Charles Avenue was recently renovated as a boutique short-term rental hotel.

The building is in the heart of the Lafayette Square Historic District, only a few blocks from Poydras Street. Situated along the Uptown St. Charles Avenue Streetcar Line, there is easy access from Uptown, Central Business District, and Warehouse District. It is on the same block as renowned restaurant Herbsaint and adjacent to neighboring offices, luxury condominiums, and multiple well-known restaurants, art galleries, and more.

OVERVIEW

SIZE

1,642 sf

RENTAL RATE

\$30.00/sf, NNN

ZONING

CBD-5



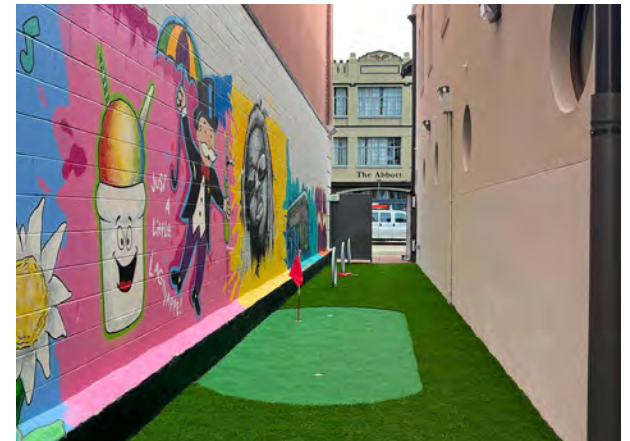
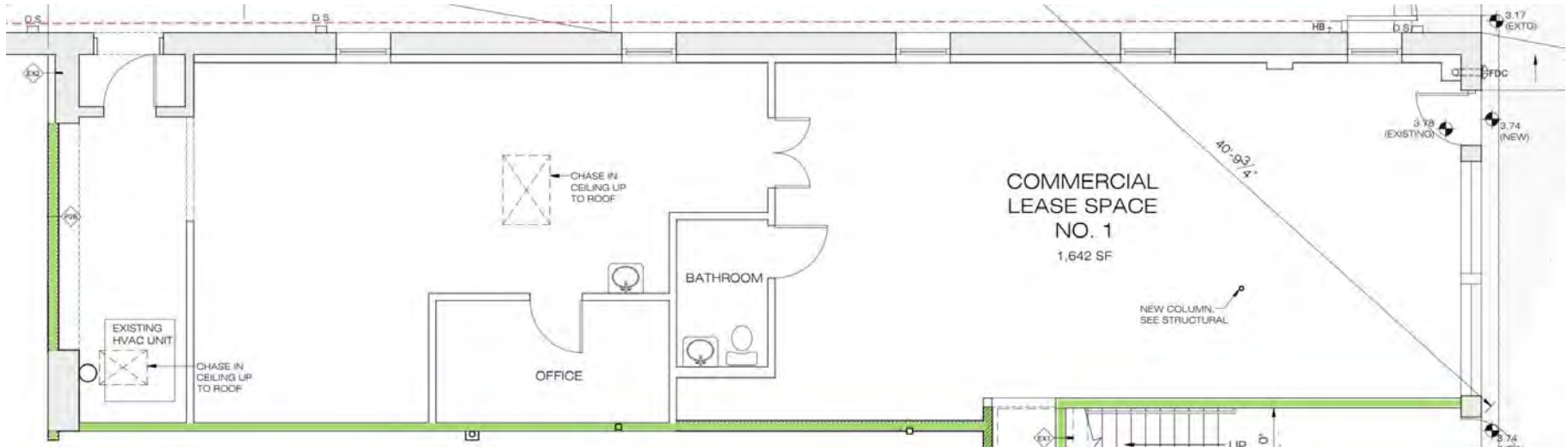
CORPORATE REALTY

Mitchell Halpern
mhalpern@corp-realty.com
504.919.5211

Scott Graf CCIM
sgraf@corp-realty.com
504.581.5005

ST. CHARLES AVENUE

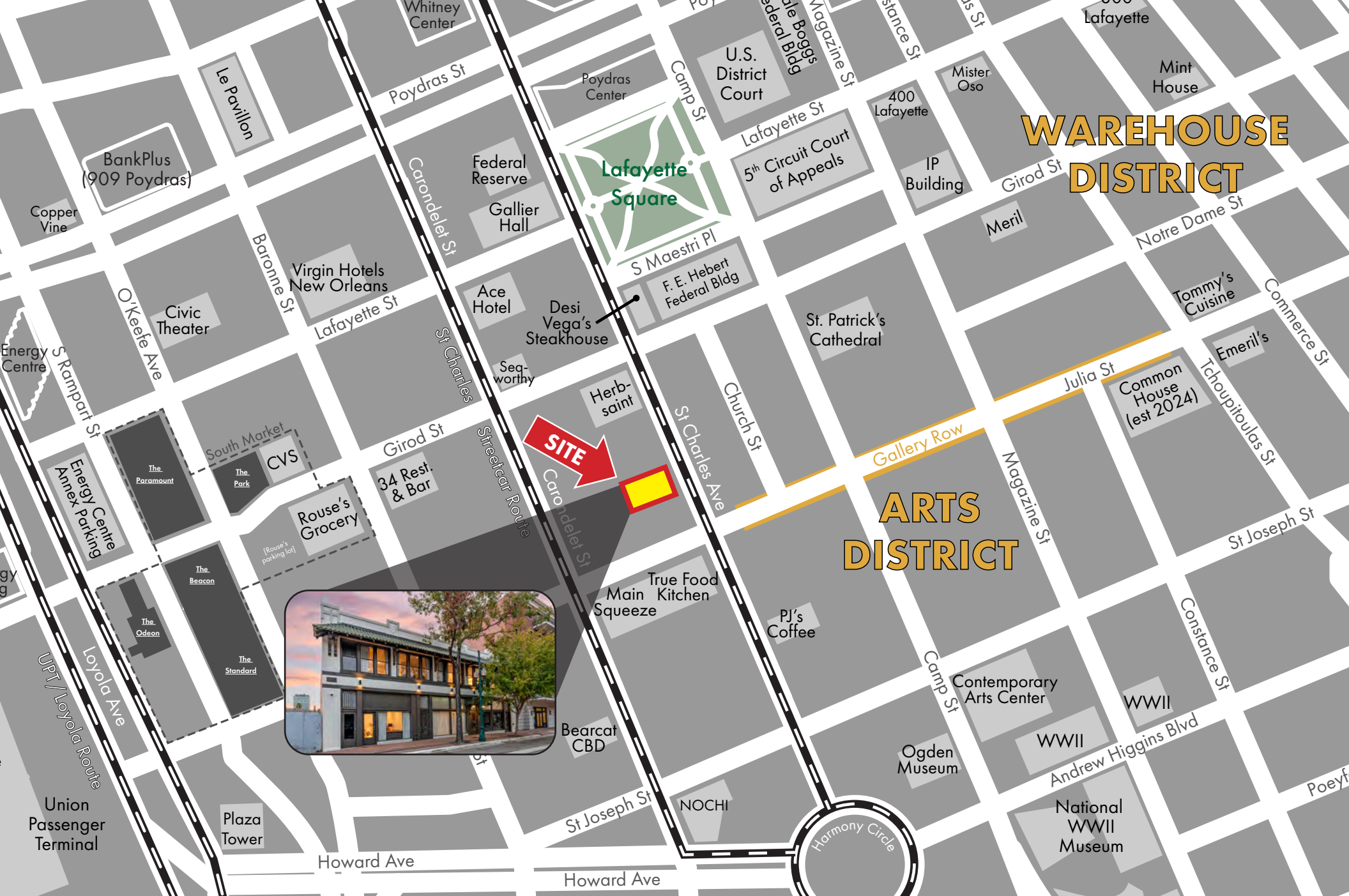
FLOOR PLAN & PICTURES



CORPORATE REALTY

Mitchell Halpern
mhalpern@corp-realty.com
504.919.5211

Scott Graf CCIM
sgraf@corp-realty.com
504.581.5005



CORPORATE REALTY

Mitchell Halpern
mhalpern@corp-realty.com
504.919.5211

Scott Graf CCIM
sgraf@corp-realty.com
504.581.5005

COMMERCIAL SPACE | FOR LEASE

Ground Floor Retail Space in Warehouse District

747 St. Charles Avenue, New Orleans, LA 70130



Mitchell Halpern
mhalpern@corp-realty.com
504.919.5211



Scott Graf CCIM
sgraf@corp-realty.com
504.581.5005



CORPORATE REALTY

201 St. Charles Ave., Suite 4411, New Orleans, LA 70170
504.581.5005 | corp-realty.com

The information contained herein has been obtained from sources that we deem reliable. No representation or warranty is made as to the accuracy thereof, and it is submitted subject to errors, omissions, change of price, or other conditions, or withdrawal without notice. Licensed in Louisiana, 2/2024