



OFFICE/WAREHOUSE FOR LEASE

2108 GRAND CAILLOU RD | HOUMA, LA



BUILDING AREA

Approximately 10,290 square feet of grade level office/warehouse.

Building currently in shell condition.

Landlord to contribute towards improvements.

Can be combined with 2120 Grand Caillou Rd, for a total of 22,660 sq. ft. +/- and yard.

ZONING

Industrial

LOADING

Grade level via two (2) overhead doors.

LEASE RATE

\$4.50 per sq. ft., triple net.

Max J. Derbes, Inc.
REALTORS ■

CONTACT
JACK QUINN, CCIM

OFFICE 504.210-1349
CELL 504.236-4949
jack@maxderbes.com

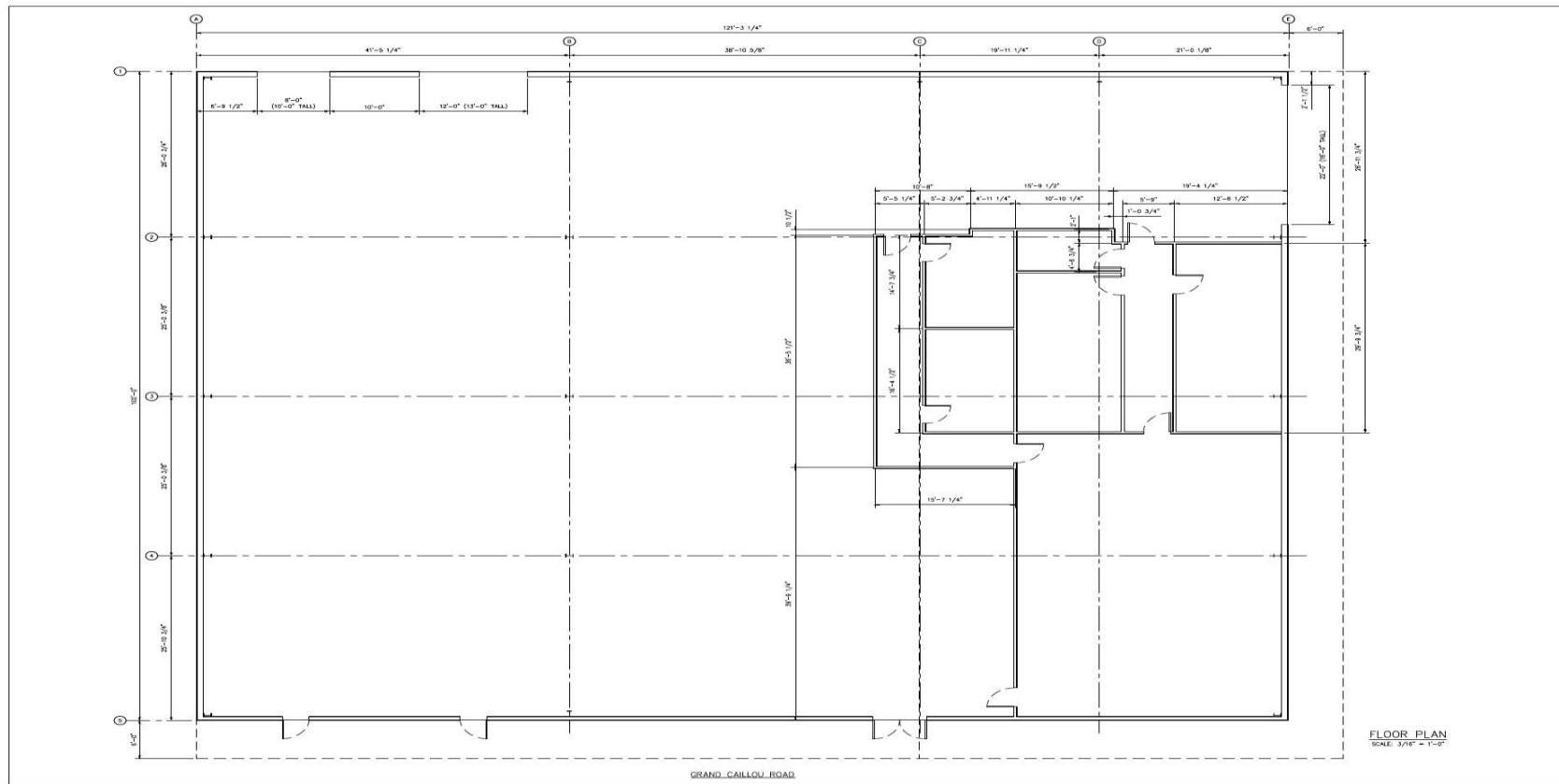
Max J. Derbes, Inc.
5440 Mounes Street, Ste 100
New Orleans, LA 70123





OFFICE/WAREHOUSE FOR LEASE

2108 GRAND CAILLOU RD | HOUMA, LA



FLOOR PLAN
SCALE: 3/16" = 1'-0"

Nuss Services, LLC
EMAIL: NUSS SERVICES@GMAIL.COM
OFFICE: (504) 810-5029

THESE DRAWINGS ARE NOT TO BE
NOTED FROM SCHEDULES
BE FOLLOWED AND NOT SCALED.

2108-2110 Grand Caillou Road
Houma, LA 70363

NO REVISIONS OR ALTERATIONS TO
THIS DRAWING SHALL BE MADE WITHOUT
THE WRITTEN APPROVAL OF THE
DESIGNER. ANY CHANGES TO THE
DRAWING SHALL BE INDICATED BY A
REVISION NUMBER AND DATE.

CONTRACT: 2024-001-000000-001

REVISIONS:

NO.	DATE	DESCRIPTION

TITLE:

FLOOR
PLAN

ISSUED DATE: 01/25/25
DRAWN BY: JRM
CHECKED BY: JRM
PROJECT #: 24026

A1.0

Max J. Derbes, Inc.
REALTORS ■

CONTACT
JACK QUINN, CCIM

OFFICE 504.210-1349
CELL 504.236-4949
jack@maxderbes.com

Max J. Derbes, Inc.
5440 Mounes Street, Ste 100
New Orleans, LA 70123

