



PETROLEUM SQUARE TWO

1324 N. Hearne Avenue, Shreveport, LA 71107

- Upscale professional office building
- Three Spaces Available
 - 1,441 SF
 - 876 SF
 - 4,575 SF
- Building is fiber ready to meet your high speed data needs
- State of the art security system - 24/7 building access
- Generous Free Parking
- Full service - monthly rent includes all utilities, taxes, maintenance, and janitorial services
- Great location to access both the Shreveport & Bossier metropolitan areas



To see a video of this property, visit these links:
<https://youtu.be/vmdkgTHrtus?si=87C7nJNSBGxNGtNW>
<https://youtu.be/8eyFelToFFs?si=WJ8KOMevNqzAPvNO>

For more information, contact:

Michele Sauls, Associate Broker | 318.222.2244 | msauls@vintagerealty.com

ALL INFORMATION CONTAINED HEREIN IS BELIEVED TO BE ACCURATE, BUT IS NOT WARRANTED AND NO LIABILITY OF ERRORS OR OMISSIONS IS ASSURED BY EITHER THE PROPERTY OWNER OR VINTAGE REALTY COMPANY OR ITS AGENTS AND EMPLOYEES. PRICES AS STATED HEREIN AND PRODUCT AVAILABILITY IS SUBJECT TO CHANGE AND/OR SALE OR LEASE WITHOUT PRIOR NOTICE, AND ALL SIZES AND DIMENSIONS ARE SUBJECT TO CORRECTION. REV 1/2025



PETROLEUM SQUARE TWO

1324 N. HEARNE AVENUE
SHREVEPORT, LA 71107



For information, please contact:

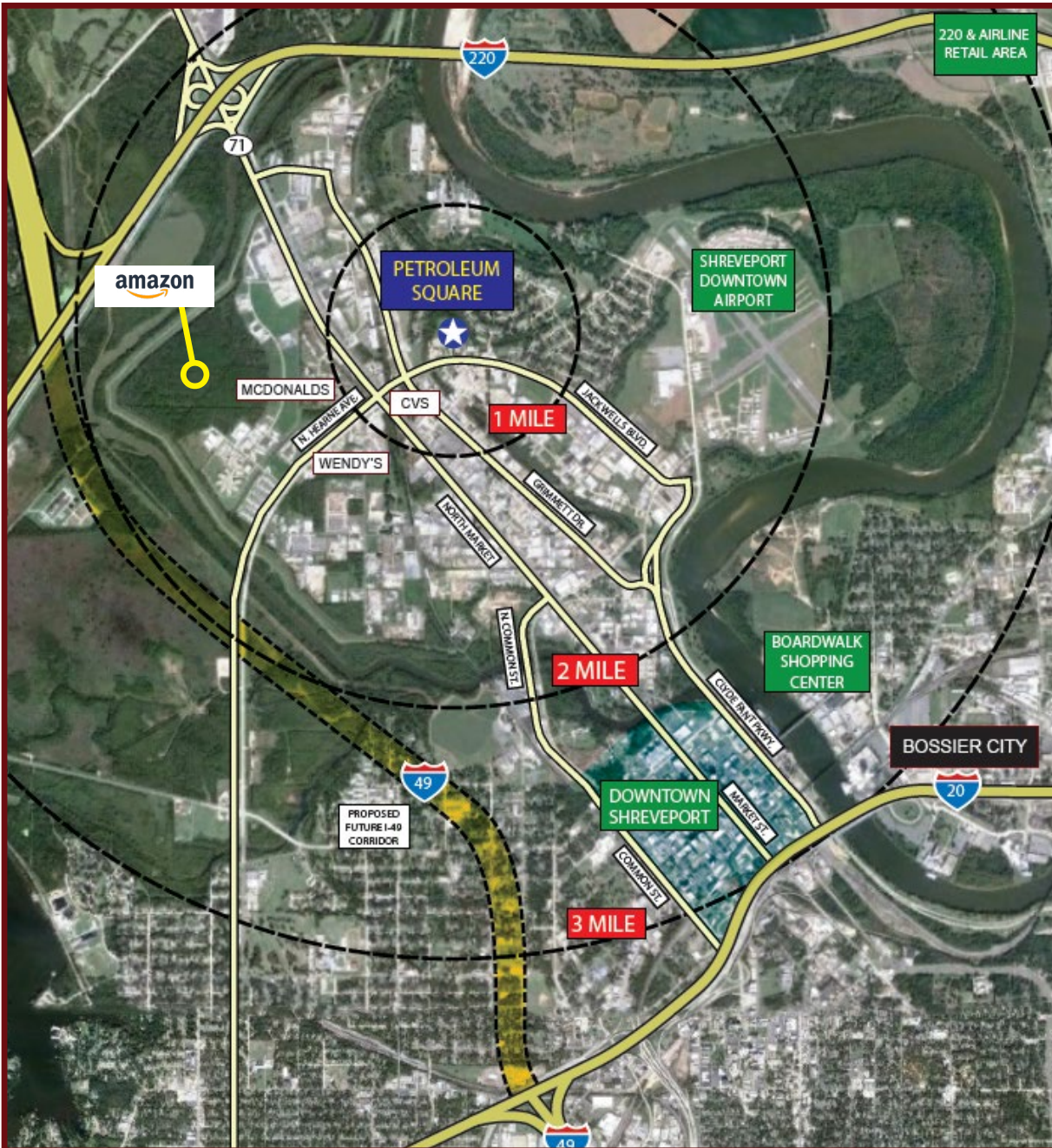
Michele Sauls, Associate Broker | 318-222-2244

msauls@vintagerealty.com | vintagerealty.com

ALL INFORMATION CONTAINED HEREIN IS BELIEVED TO BE ACCURATE, BUT IS NOT WARRANTED AND NO LIABILITY OF ERRORS OR OMISSIONS IS ASSURED BY EITHER THE PROPERTY OWNER OR VINTAGE REALTY COMPANY OR ITS AGENTS AND EMPLOYEES. PRICES AS STATED HEREIN AND PRODUCT AVAILABILITY IS SUBJECT TO CHANGE AND/OR SALE OR LEASE WITHOUT PRIOR NOTICE, AND ALL SIZES AND DIMENSIONS ARE SUBJECT TO CORRECTION. 1/2025

PETROLEUM SQUARE TWO

1324 N. HEARNE AVENUE
SHREVEPORT, LA 71107



For information, please contact:

Michele Sauls, Associate Broker | 318-222-2244

msauls@vintagerealty.com | vintagerealty.com

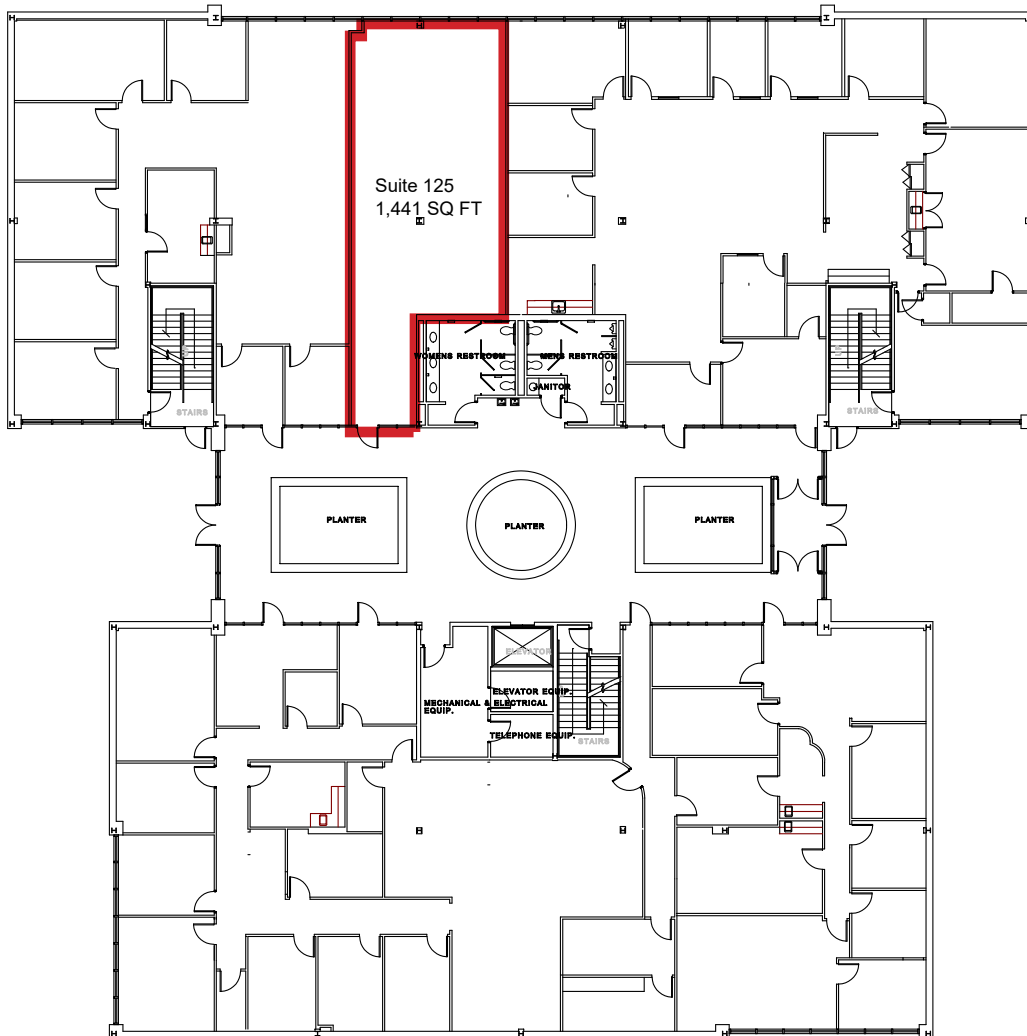


ALL INFORMATION CONTAINED HEREIN IS BELIEVED TO BE ACCURATE, BUT IS NOT WARRANTED AND NO LIABILITY OF ERRORS OR OMISSIONS IS ASSURED BY EITHER THE PROPERTY OWNER OR VINTAGE REALTY COMPANY OR ITS AGENTS AND EMPLOYEES. PRICES AS STATED HEREIN AND PRODUCT AVAILABILITY IS SUBJECT TO CHANGE AND/OR SALE OR LEASE WITHOUT PRIOR NOTICE, AND ALL SIZES AND DIMENSIONS ARE SUBJECT TO CORRECTION. 1/2025

PETROLEUM SQUARE TWO

1324 N. HEARNE AVENUE
SHREVEPORT, LA 71107

1ST FLOOR



PETROLEUM SQUARE TWO

1



VINTAGE REALTY COMPANY

330 Marshall Street
Shreveport, Louisiana 71101
918.222.2244
VintageRealty.com



For information, please contact:

Michele Sauls, Associate Broker | 318-222-2244
msauls@vintagerealty.com | vintagerealty.com

ALL INFORMATION CONTAINED HEREIN IS BELIEVED TO BE ACCURATE, BUT IS NOT WARRANTED AND NO LIABILITY OF ERRORS OR OMISSIONS IS ASSURED BY EITHER THE PROPERTY OWNER OR VINTAGE REALTY COMPANY OR ITS AGENTS AND EMPLOYEES. PRICES AS STATED HEREIN AND PRODUCT AVAILABILITY IS SUBJECT TO CHANGE AND/OR SALE OR LEASE WITHOUT PRIOR NOTICE, AND ALL SIZES AND DIMENSIONS ARE SUBJECT TO CORRECTION. 1/2025

PETROLEUM SQUARE TWO

1324 N. HEARNE AVENUE
SHREVEPORT, LA 71107



PETROLEUM SQUARE TWO

2



VINTAGE REALTY COMPANY

220 Marshall Street
Shreveport, Louisiana 71101
318.222.2244
VintageRealty.com



For information, please contact:

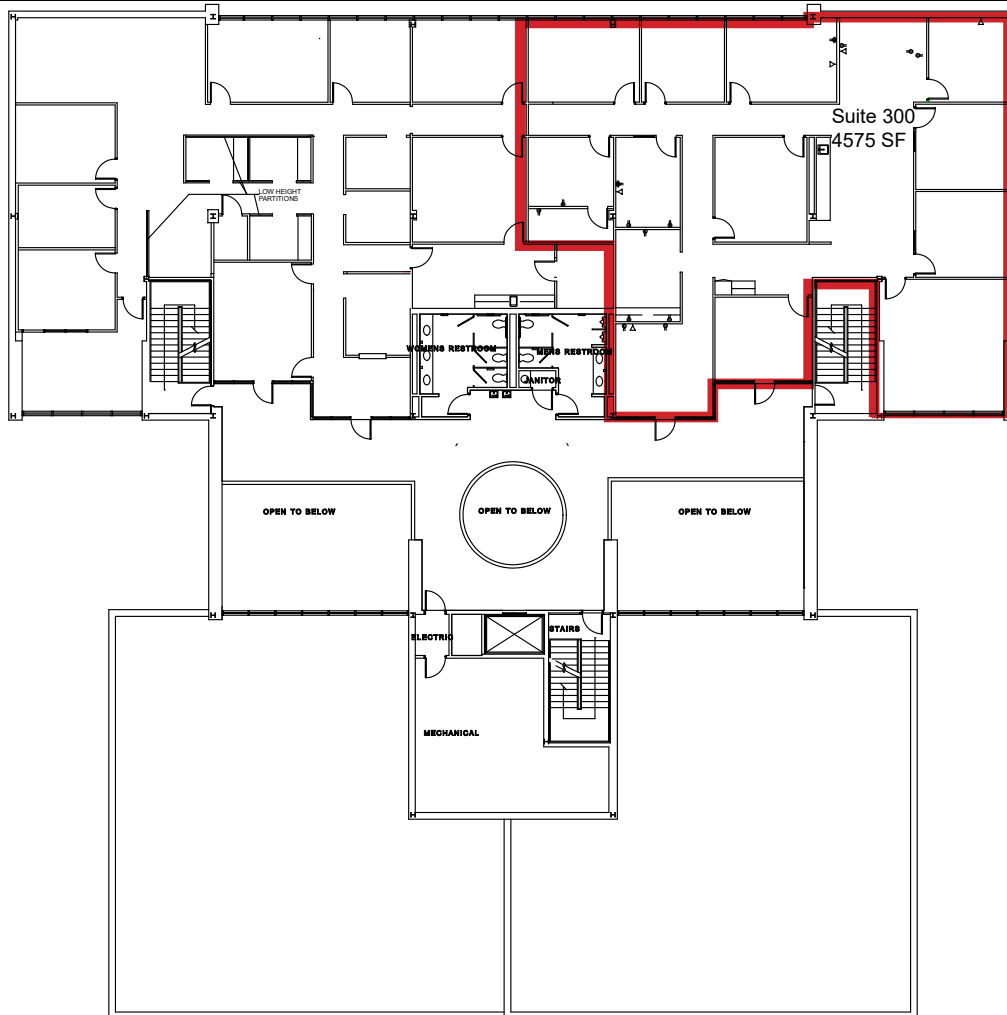
Michele Sauls, Associate Broker | 318-222-2244
msauls@vintagerealty.com | vintagerealty.com

ALL INFORMATION CONTAINED HEREIN IS BELIEVED TO BE ACCURATE, BUT IS NOT WARRANTED AND NO LIABILITY OF ERRORS OR OMISSIONS IS ASSURED BY EITHER THE PROPERTY OWNER OR VINTAGE REALTY COMPANY OR ITS AGENTS AND EMPLOYEES. PRICES AS STATED HEREIN AND PRODUCT AVAILABILITY IS SUBJECT TO CHANGE AND/OR SALE OR LEASE WITHOUT PRIOR NOTICE, AND ALL SIZES AND DIMENSIONS ARE SUBJECT TO CORRECTION. 1/2025

PETROLEUM SQUARE TWO

1324 N. HEARNE AVENUE
SHREVEPORT, LA 71107

3RD FLOOR



PETROLEUM SQUARE TWO

3



VINTAGE REALTY COMPANY

330 Marshall Street
Shreveport, Louisiana 71101
318.222.2244
VintageRealty.com



For information, please contact:

Michele Sauls, Associate Broker | 318-222-2244
msauls@vintagerealty.com | vintagerealty.com

ALL INFORMATION CONTAINED HEREIN IS BELIEVED TO BE ACCURATE, BUT IS NOT WARRANTED AND NO LIABILITY OF ERRORS OR OMISSIONS IS ASSURED BY EITHER THE PROPERTY OWNER OR VINTAGE REALTY COMPANY OR ITS AGENTS AND EMPLOYEES. PRICES AS STATED HEREIN AND PRODUCT AVAILABILITY IS SUBJECT TO CHANGE AND/OR SALE OR LEASE WITHOUT PRIOR NOTICE, AND ALL SIZES AND DIMENSIONS ARE SUBJECT TO CORRECTION. 1/2025