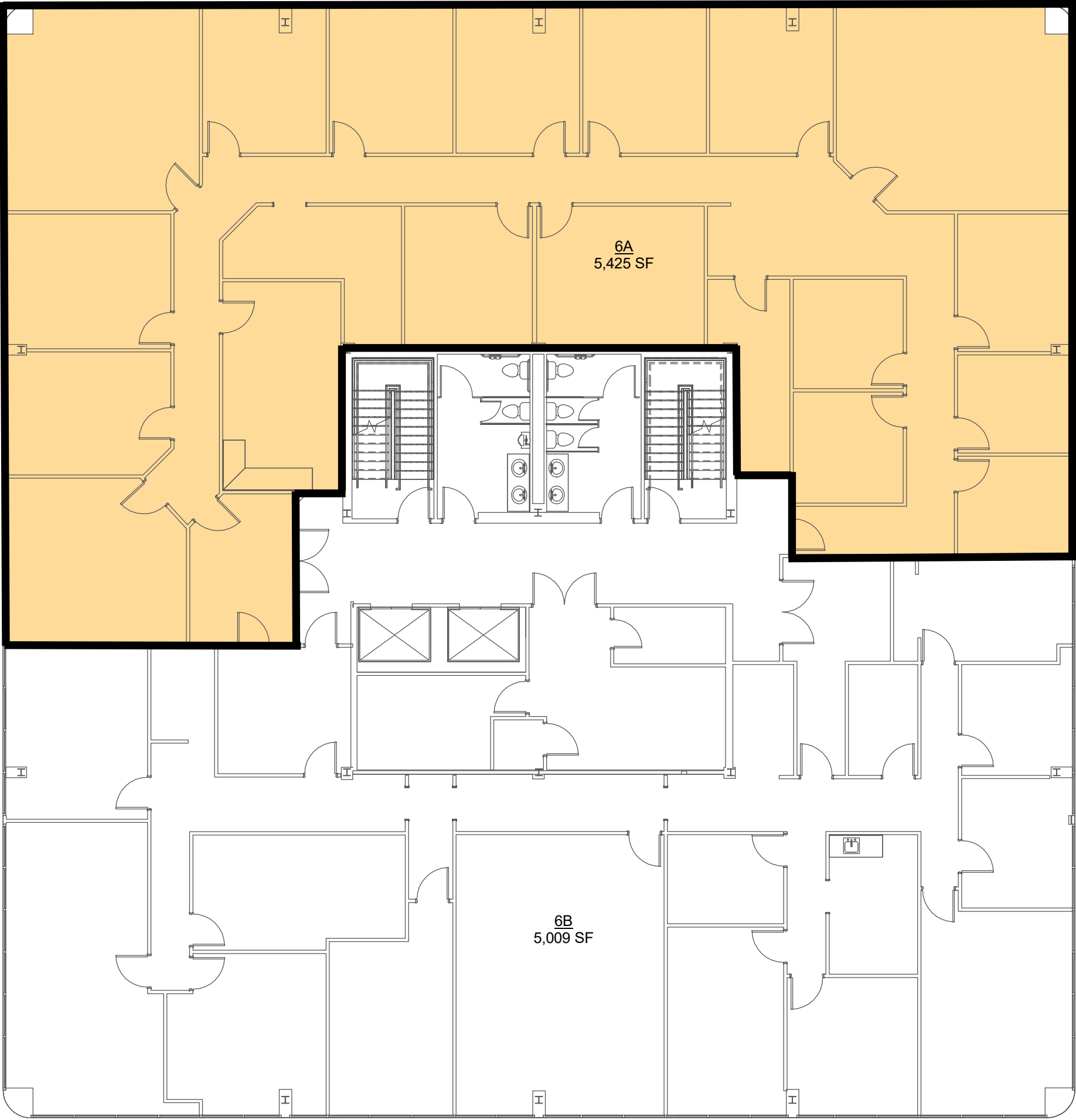
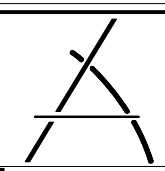


NAME	USABLE	COMMON (16%)	RENTABLE SF
Suite 600 (6A)	4,677 SF	748 SF	5,425 SF
Suite 604 (6B)	4,318 SF	691 SF	5,009 SF



**1 SIXTH FLOOR PLAN**  
SCALE: 3/32" = 1'-0"



**ZILER**  
ARCHITECTS  
A PROFESSIONAL  
ARCHITECTURAL  
CORPORATION

JAMES O. ZILER, ARCHITECT  
SEAN R. PRIMEAUX, ARCHITECT

101 Calco Boulevard  
Lafayette, Louisiana 70503  
Ph: 337-269-6326

10610 Florida Boulevard  
Walker, Louisiana 70785  
Ph: 225-424-6990  
[www.zilerarchitects.net](http://www.zilerarchitects.net)

DOCUMENTS PREPARED BY ZILER ARCHITECTS ARE INSTRUMENTS OF THE ARCHITECT'S SERVICE FOR USE SOLELY WITH RESPECT TO THIS PROJECT. THE ARCHITECT SHALL RETAIN ALL COMMON LAW, STATUTORY AND OTHER RESERVED RIGHTS, INCLUDING THE COPYRIGHT. THEY ARE NOT TO BE USED BY THE CONTRACTOR OR ANY SUBCONTRACTOR, MATERIAL OR EQUIPMENT SUPPLIERS OR ANYONE FOR OTHER PROJECTS OR FOR ADDITIONS TO THIS PROJECT OUTSIDE THE SCOPE OF THE WORK WITHOUT THE SPECIFIC WRITTEN CONSENT OF ZILER ARCHITECTS.

RENOVATIONS FOR:  
**LAHAYE CENTER**  
201 RUE IBERVILLE  
LAFAYETTE, LOUISIANA 70508

NOT FOR  
CONSTRUCTION

DATE ISSUED	09/29/25
REVISED	-
PLOT DATE	09/29/25 9:18:47 AM
DRAWN BY	GMB
CHECKED BY	SRP
PROJECT NO.	2506
SHEET NO.	AC06.1
	OF 16