

## SUMMARY

## AERIAL

## GROUND FLOOR FLOOR PLAN

## MEZZANINE FLOOR PLAN

## DEMOGRAPHICS

## EXTERIOR PHOTOS

## INTERIOR PHOTOS

## MULTI-PURPOSE COMMERCIAL BUILDING FOR LEASE OR SALE

### PROPERTY OVERVIEW

- Prominent, high visibility commercial location in SE Baton Rouge
- Midway between 2 major N-S traffic arteries:  
1.4 miles east of S. Sherwood Forest Blvd. & 0.8 miles west of Jones Creek Rd.
- Easy access to all parts of Baton Rouge & surrounding areas
- Name: Haghighi Rug Gallery (moving to 9125 Bluebonnet Blvd., Baton Rouge)
- Building: Freestanding 6,762± SF multi-purpose, pre-engineered, steel frame building on grade level concrete slab
- 1st Floor: 6,232± SF Total. 3,648± SF in showrooms, offices & restrooms, all central HVAC plus 2,584± SF climate-controlled warehouse (see attached floorplan)
- Mezzanine: 530± SF central HVAC. Large room for office or storage, restroom with shower, & equipment/storage room (see attached floorplan)
- Great visibility and accessibility to all passing traffic on 5-lane Coursey Blvd (no median)
- Approximately 31,575 vehicles pass this site daily.
- Parking: 13 striped, concrete-paved spaces. Room for more.
- Signage: Maximum exposure to all passing traffic using large, 2-sided, pylon sign
- Flood Zone: "X" (area of reduced flood risk due to levee, per 2008 Firm Map)
- Owner Occupied. Shown by appointment only!

### LAND AREA

- 0.568± Acres (165' W x 150' D)

### ZONING

- C-1 (Light commercial) on front 130'±
- B (Parking) on rear 20'±
- Potential for HC-1, 2, or 3 (Commercial) if needed

### LEASE PRICING

- \$5,900 mo. (\$10.47± SF Yr.) NNN "As is" for Yr. 1 + 2% annual bumps thereafter.  
Current NNN charges for prop. taxes & insurance = \$830±/mo

### SALE PRICING

- \$890,000 (\$132± SF) "As Is" minerals not included





SUMMARY

AERIAL

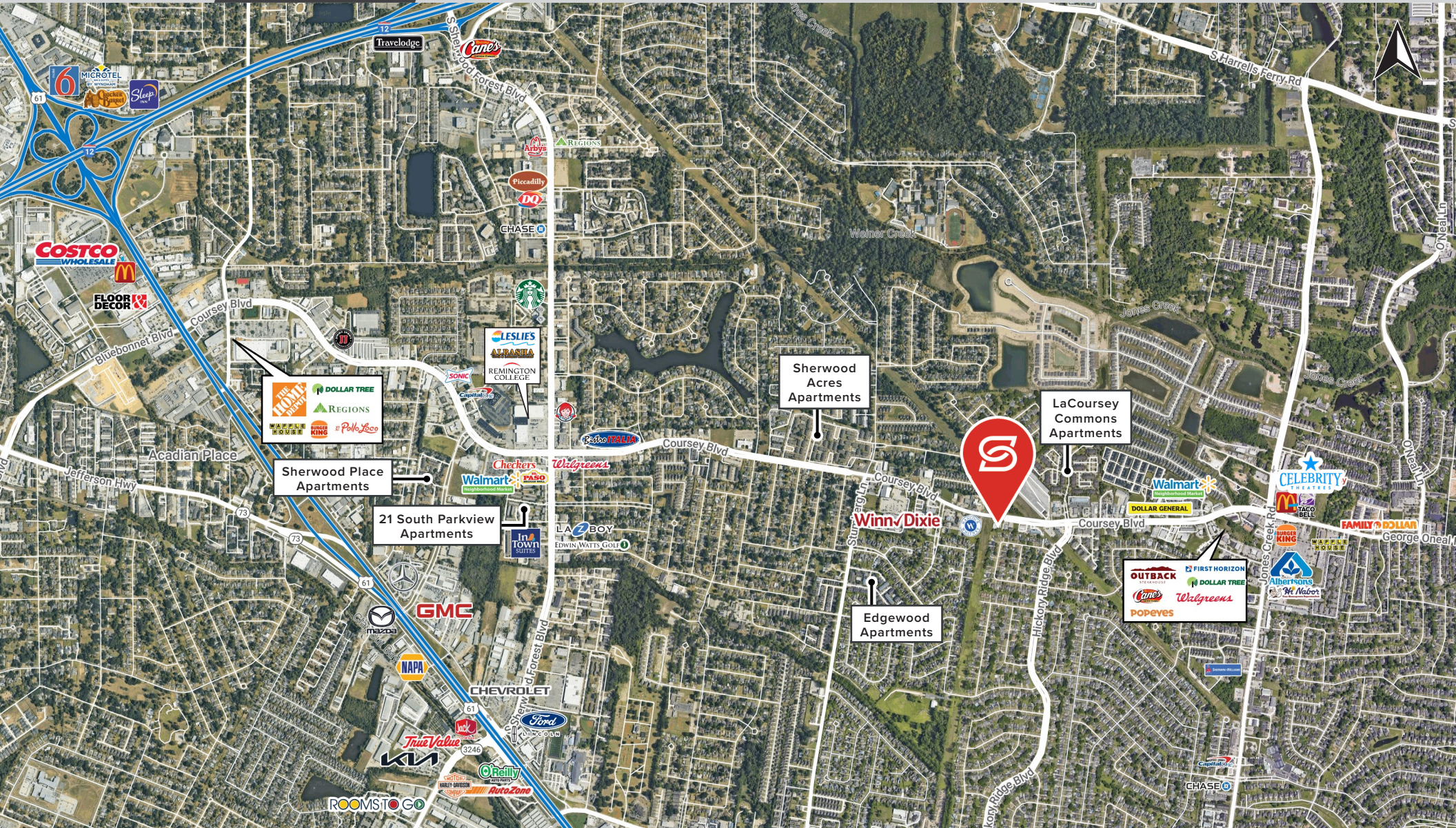
GROUND FLOOR  
FLOOR PLAN

MEZZANINE  
FLOOR PLAN

DEMOGRAPHICS

EXTERIOR  
PHOTOS

INTERIOR  
PHOTOS





SUMMARY

AERIAL

**GROUND FLOOR  
FLOOR PLAN**

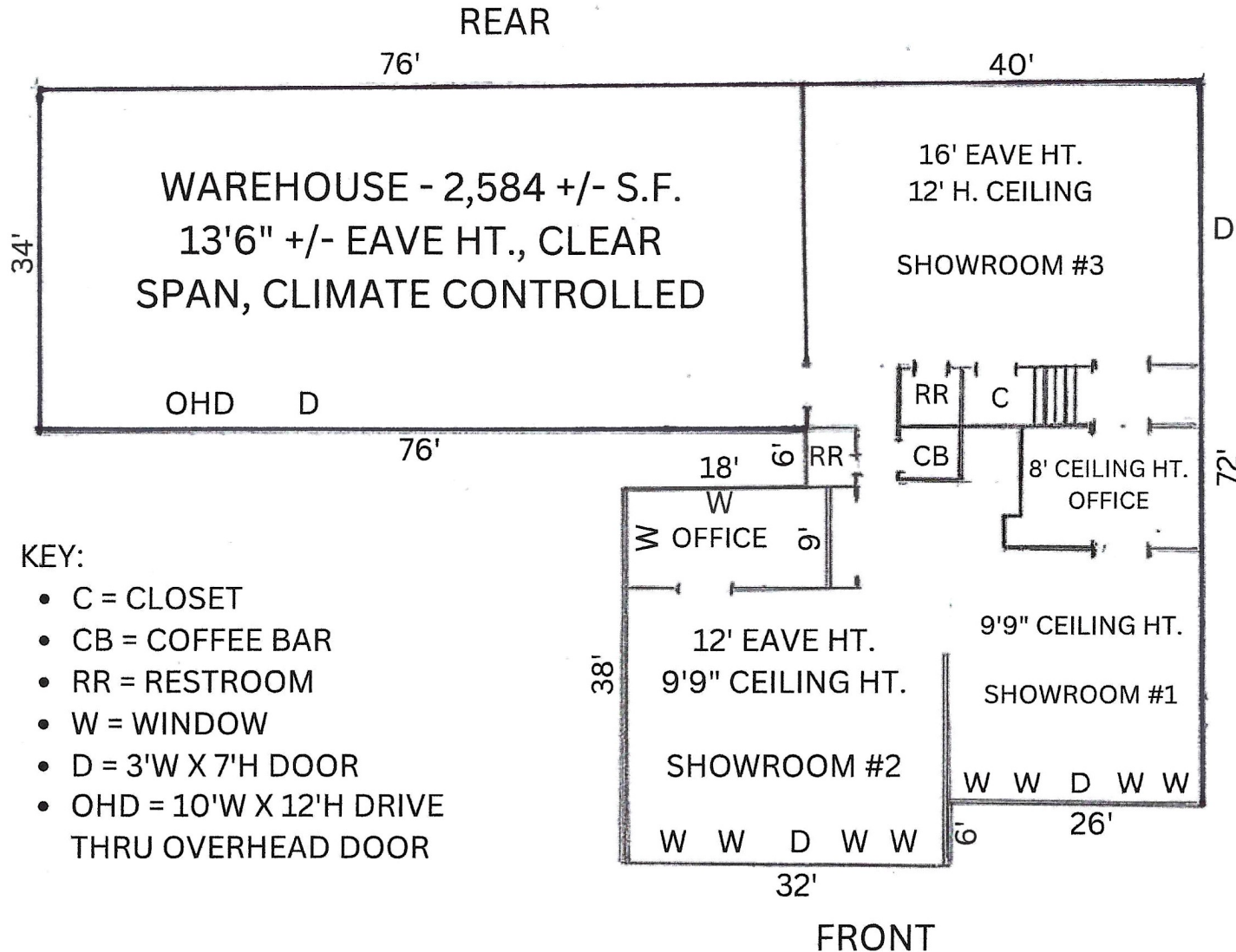
MEZZANINE  
FLOOR PLAN

DEMOGRAPHICS

EXTERIOR  
PHOTOS

INTERIOR  
PHOTOS

Click image for larger view



SUMMARY

AERIAL

GROUND FLOOR  
FLOOR PLAN

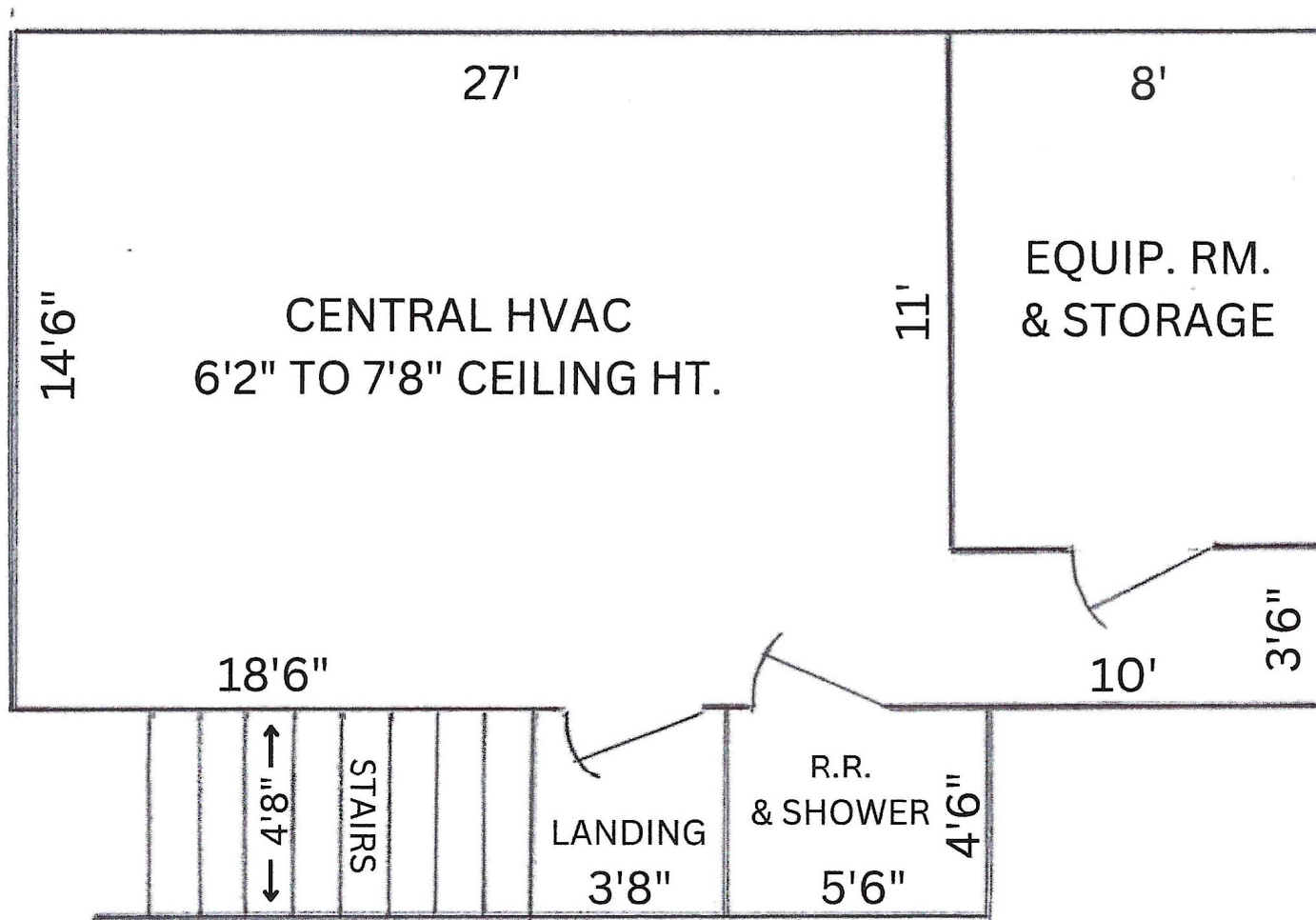
MEZZANINE  
FLOOR PLAN

DEMOGRAPHICS

EXTERIOR  
PHOTOS

INTERIOR  
PHOTOS

Click image for larger view





SUMMARY

AERIAL

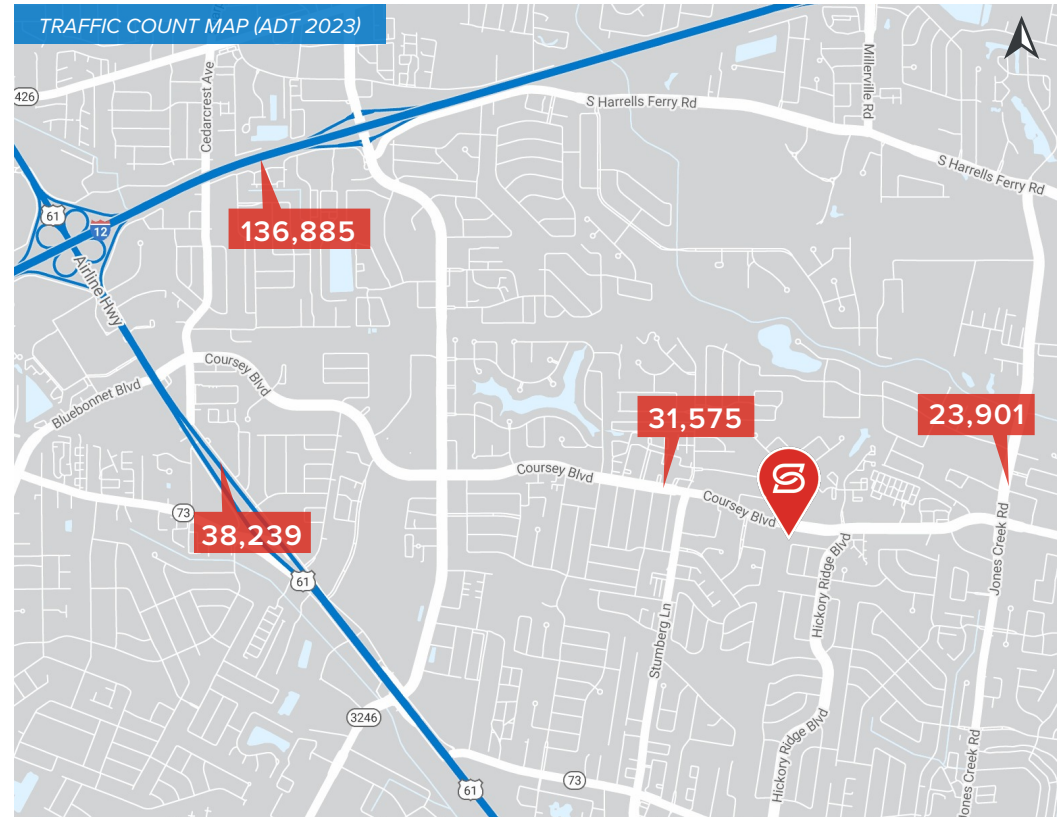
GROUND FLOOR  
FLOOR PLAN

MEZZANINE  
FLOOR PLAN

DEMOGRAPHICS

EXTERIOR  
PHOTOS

INTERIOR  
PHOTOS



## 2024 DEMOGRAPHICS

1 MILE

3 MILE

5 MILE



12,119

76,060

157,323



1 MILE

3 MILE

5 MILE

\$97,922

\$106,019

\$114,766



1 MILE

3 MILE

5 MILE

6,221

67,043

161,063





JIM S. DOWLING, SIOR

Office: 225-926-4481

Cell: 318-347-2043

jdowling@stirlingprop.com

**6,762± SF COMMERCIAL BUILDING**

FRONTING MAJOR BATON ROUGE THRUWAY

13420 Coursey Blvd, Baton Rouge, LA 70816

SUMMARY

AERIAL

GROUND FLOOR  
FLOOR PLAN

MEZZANINE  
FLOOR PLAN

DEMOGRAPHICS

EXTERIOR  
PHOTOS

INTERIOR  
PHOTOS





SUMMARY

AERIAL

GROUND FLOOR  
FLOOR PLAN

MEZZANINE  
FLOOR PLAN

DEMOGRAPHICS

EXTERIOR  
PHOTOS

INTERIOR  
PHOTOS

