



**SAURAGE ROTENBERG**  
COMMERCIAL REAL ESTATE

# NEWLY REMODELED STRIP CENTER W/ DRIVE-THRU FOR LEASE

**7122 Florida Blvd  
Baton Rouge, LA 70806**

---

**CARMEN AUSTIN, MBA, CCIM, SIOR**  
Associate Broker & Retail Specialist  
(D)225.930.6256 | (C)225.328.1778  
[carmen@sr-cre.com](mailto:carmen@sr-cre.com)



**Stout**  
ARCHITECTURE

**MERRICK'S**  
ELECTRIC LLC  
**MEZ**  
Residential & Commercial License & Bonded  
(225) 718-0058  
LA # 71162



**SAURAGE ROTENBERG**  
COMMERCIAL REAL ESTATE

# NEWLY REMODELED RETAIL STRIP CENTER WITH DRIVE-THRU

7122 FLORIDA BLVD, BATON ROUGE, LA 70806

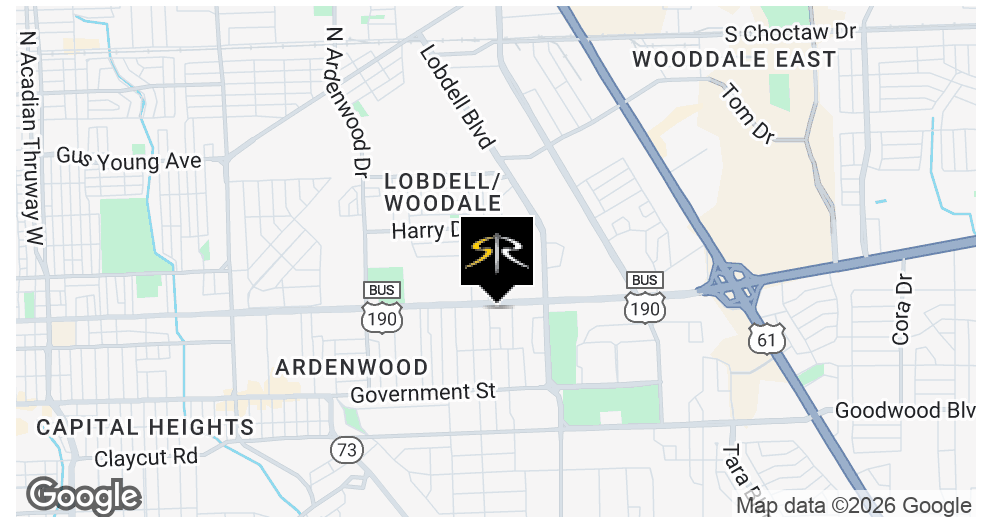
FOR LEASE

**\$18 -20 SF**



## OFFERING SUMMARY

Lease Rate:	\$18.00 - 20.00 SF/yr (NNN)
Building Size:	5,760 SF
Available SF:	1,600 - 1,920 SF
# Units:	3
Lot Size:	0.52 ACRES
Year Built/Renovated:	1982 / 2026
Pylon Sign:	Yes
Zoning:	C2 (Heavy Commercial)
Traffic Count:	35,801 ADT
Available For Occupancy:	March - 2026



**CARMEN AUSTIN, MBA, CCIM, SIOR**  
Associate Broker & Retail Specialist  
225.930.6256  
carmen@sr-cre.com

**SAURAGE ROTENBERG COMMERCIAL REAL ESTATE, LLC**  
5135 Bluebonnet Boulevard  
Baton Rouge, LA 70809  
225.766.0000 | sauragerotenberg.com

The information contained herein has either been given to us by property owners or is from sources deemed reliable and is believed to be correct, it is not in any way warranted or guaranteed by Saurage Rotenberg Commercial Real Estate. This information is submitted subject to errors, omissions, changes in price, rental or other conditions, withdrawal without notice, and to any special listing conditions imposed by the principals. Licensed in Louisiana & Mississippi.





**SAURAGE ROTENBERG**  
COMMERCIAL REAL ESTATE

# NEWLY REMODELED RETAIL STRIP CENTER WITH DRIVE-THRU

7122 FLORIDA BLVD, BATON ROUGE, LA 70806

**\$18 -20 SF**

## PROPERTY DESCRIPTION

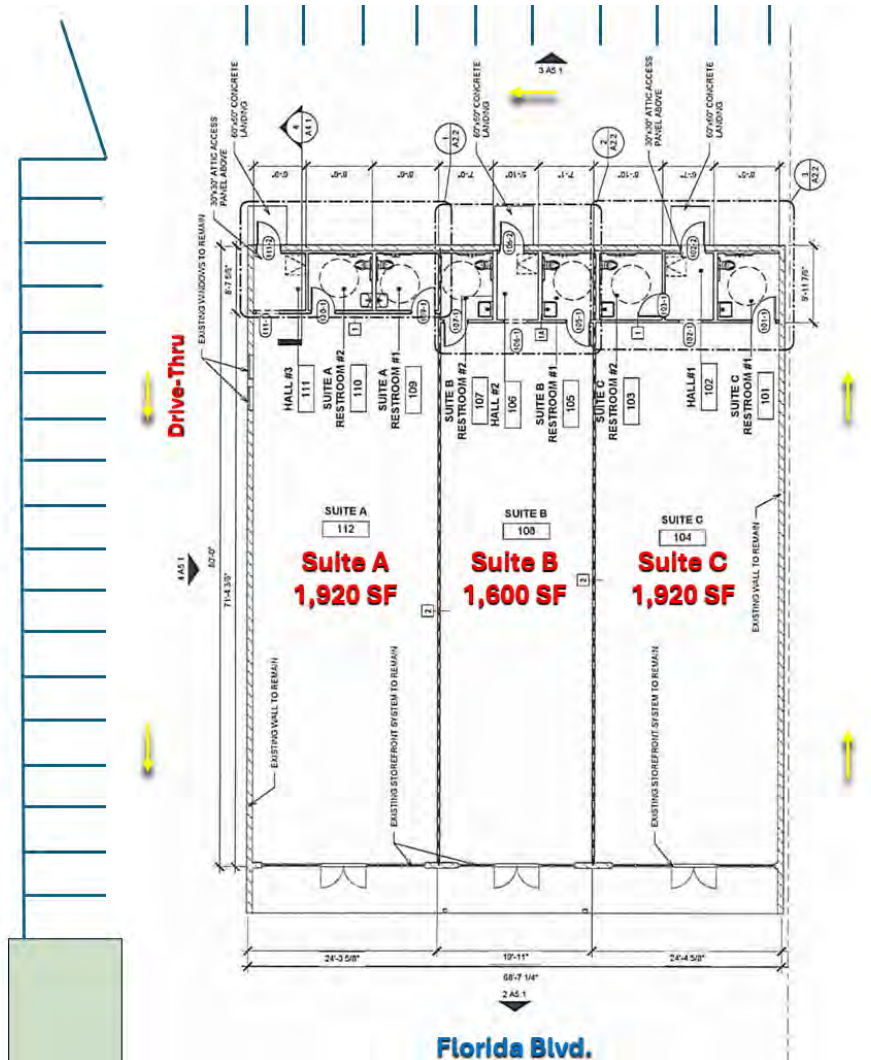
FOR LEASE | NEWLY REMODELED RETAIL STRIP CENTER WITH DRIVE-THRU

COMING SOON! Now available for lease, 7122 Florida Boulevard is a newly remodeled three-unit retail strip center strategically positioned along one of Baton Rouge's highest-visibility commercial corridors. The property offers excellent exposure, strong traffic counts, and a highly functional site design with on-site drive-thru capability, making it ideal for food, beverage, medical, or service-oriented users.

The center consists of three retail suites with efficient layouts, modernized exterior improvements, vanilla box delivery, and convenient parking. One suite is designed to accommodate a drive-thru, providing a rare opportunity for quick-service restaurants, coffee concepts, or financial and medical users seeking fast in-and-out access for customers.

The site plan reflects well-organized traffic flow, dedicated ingress and egress points, ample parking, and a drive-thru circulation pattern that allows vehicles to queue without disrupting on-site parking or neighboring tenants. The layout supports both high-volume drive-thru operations and traditional inline retail uses.

Located on Florida Boulevard in Mid-City directly across from Bon Carre', the property benefits from proximity to dense residential neighborhoods, established retail centers, and daily traffic generators. Florida Boulevard remains one of Baton Rouge's most traveled corridors, offering consistent exposure and strong demographics for neighborhood-serving businesses with access to Downtown, Mid-City and neighboring communities like Central.



**CARMEN AUSTIN, MBA, CCIM, SIOR**  
Associate Broker & Retail Specialist  
225.930.6256  
carmen@sr-cre.com

**SAURAGE ROTENBERG COMMERCIAL REAL ESTATE, LLC**  
5135 Bluebonnet Boulevard  
Baton Rouge, LA 70809  
225.766.0000 | sauragerotenberg.com

# NEWLY REMODELED RETAIL STRIP CENTER WITH DRIVE-THRU

7122 FLORIDA BLVD, BATON ROUGE, LA 70806

**\$18 -20 SF**



## PROPERTY HIGHLIGHTS

- Newly remodeled 3-unit retail strip center
- Drive-thru capability (rare Florida Blvd offering)
- Modernized exterior and site improvements
- Strong visibility and signage opportunity
- Efficient parking and traffic circulation
- High-traffic Florida Boulevard location
- Ideal for QSR, coffee, medical, service, or retail users
- Flexible suite sizes and configurations
- This property presents an excellent opportunity for tenants seeking a highly visible, move-in-ready retail location with drive-thru potential in a proven Baton Rouge corridor.

**CARMEN AUSTIN, MBA, CCIM, SIOR**  
Associate Broker & Retail Specialist  
225.930.6256  
[carmen@sr-cre.com](mailto:carmen@sr-cre.com)

**SAURAGE ROTENBERG COMMERCIAL REAL ESTATE, LLC**  
5135 Bluebonnet Boulevard  
Baton Rouge, LA 70809  
225.766.0000 | [sauragerotenberg.com](http://sauragerotenberg.com)



**SAURAGE ROTENBERG**  
COMMERCIAL REAL ESTATE

# NEWLY REMODELED RETAIL STRIP CENTER WITH DRIVE-THRU

7122 FLORIDA BLVD, BATON ROUGE, LA 70806

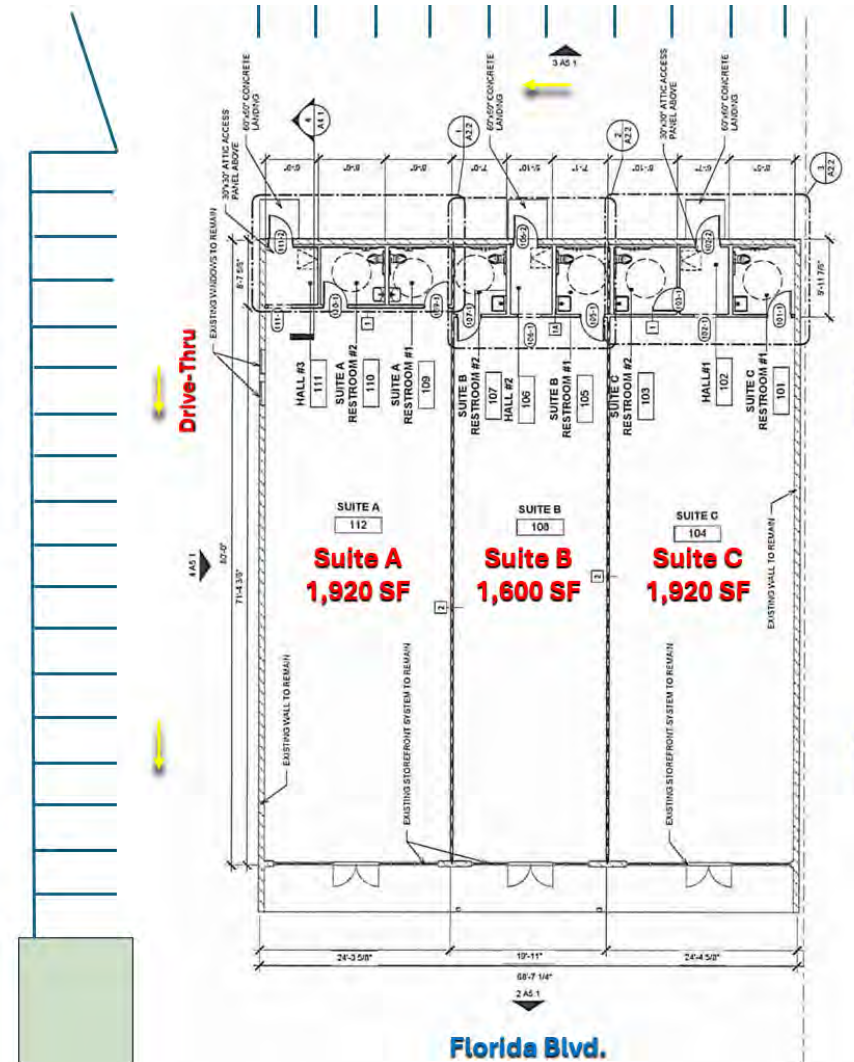
**\$18 -20 SF**

## LEASE INFORMATION

Lease Type:	NNN	Lease Term:	Negotiable
Total Space:	1,600 - 1,920 SF	Lease Rate:	\$18.00 - \$20.00 SF/yr

## AVAILABLE SPACES

SUITE	TENANT	SIZE (SF)	LEASE TYPE	LEASE RATE	DESCRIPTION
Suite A	Available	1,920 SF	NNN	\$18.00 - \$20.00 SF/yr	End Cap with Drive-Thru
Suite B	Available	1,600 SF	NNN	\$18.00 - \$20.00 SF/yr	In-line
Suite C	Available	1,920 SF	NNN	\$18.00 - \$20.00 SF/yr	End Cap



**CARMEN AUSTIN, MBA, CCIM, SIOR**  
Associate Broker & Retail Specialist  
225.930.6256  
carmen@sr-cre.com

**SAURAGE ROTENBERG COMMERCIAL REAL ESTATE, LLC**  
5135 Bluebonnet Boulevard  
Baton Rouge, LA 70809  
225.766.0000 | sauragerotenberg.com





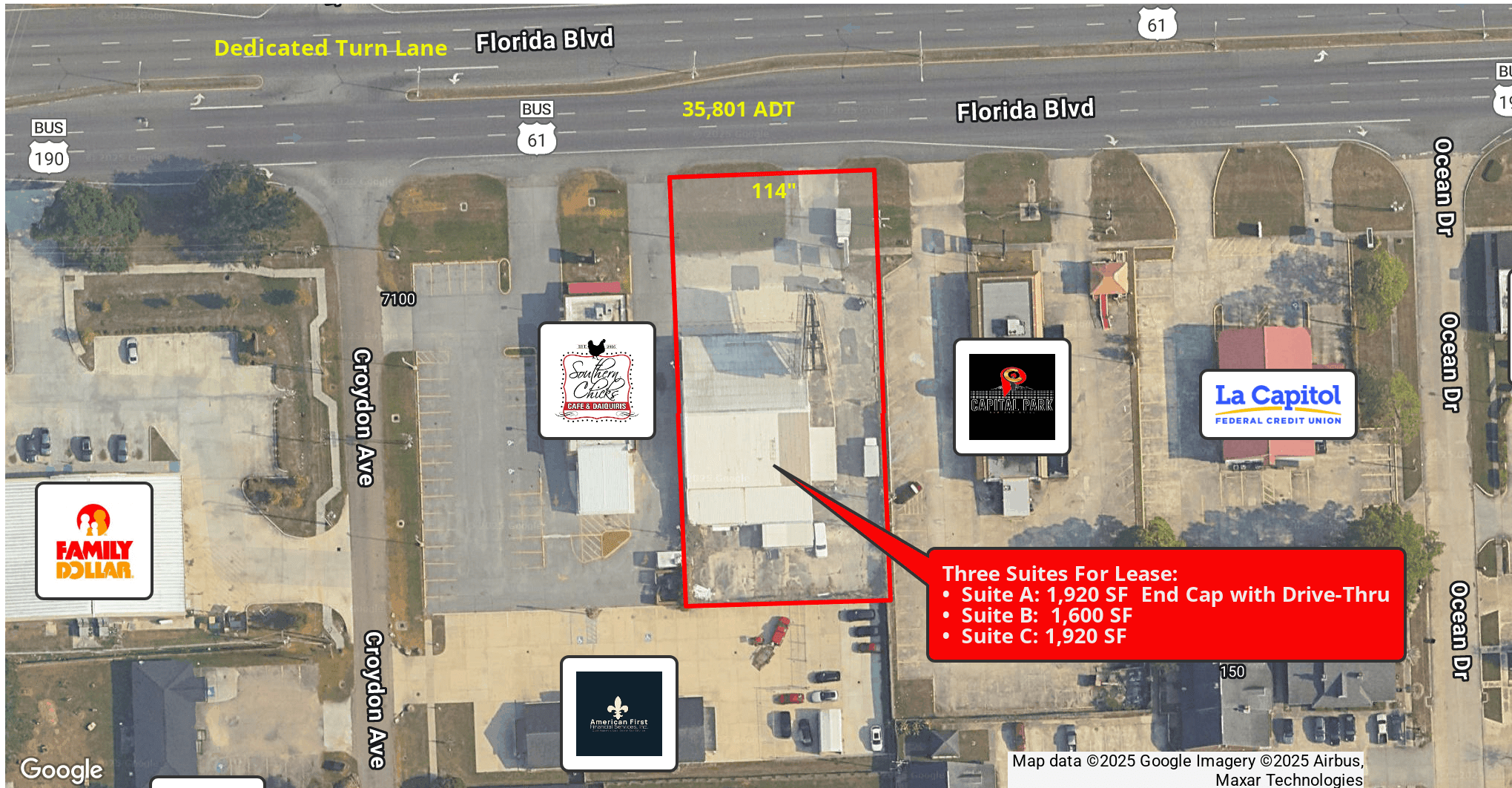
SAURAGE ROTENBERG  
COMMERCIAL REAL ESTATE

# NEWLY REMODELED RETAIL STRIP CENTER WITH DRIVE-THRU

7122 FLORIDA BLVD, BATON ROUGE, LA 70806

FOR LEASE

\$18 -20 SF



CARMEN AUSTIN, MBA, CCIM, SIOR  
Associate Broker & Retail Specialist  
225.930.6256  
carmen@sr-cre.com

SAURAGE ROTENBERG COMMERCIAL REAL ESTATE, LLC  
5135 Bluebonnet Boulevard  
Baton Rouge, LA 70809  
225.766.0000 | sauragerotenberg.com

The information contained herein has either been given to us by property owners or is from sources deemed reliable and is believed to be correct, it is not in any way warranted or guaranteed by Saurage Rotenberg Commercial Real Estate. This information is submitted subject to errors, omissions, changes in price, rental or other conditions, withdrawal without notice, and to any special listing conditions imposed by the principals. Licensed in Louisiana & Mississippi.





## RETAIL MAP

**\$18 -20 SF**



Map data ©2025 Google Imagery ©2025 Airbus, Maxar

**SAURAGE ROTENBERG COMMERCIAL REAL ESTATE, LLC**

5135 Bluebonnet Boulevard

Baton Rouge, LA 70809

225.766.0000 | sauragerotenberg.com

The information contained herein has either been given to us by property owner or is from sources deemed reliable and is believed to be correct, it is not in any way warranted or guaranteed by Saurage Rotenberg Commercial Real Estate. This information is submitted subject to errors, omissions, changes in price, rental or other conditions, withdrawal without notice, and to any special listing conditions imposed by the principals. Licensed in Louisiana & Mississippi.





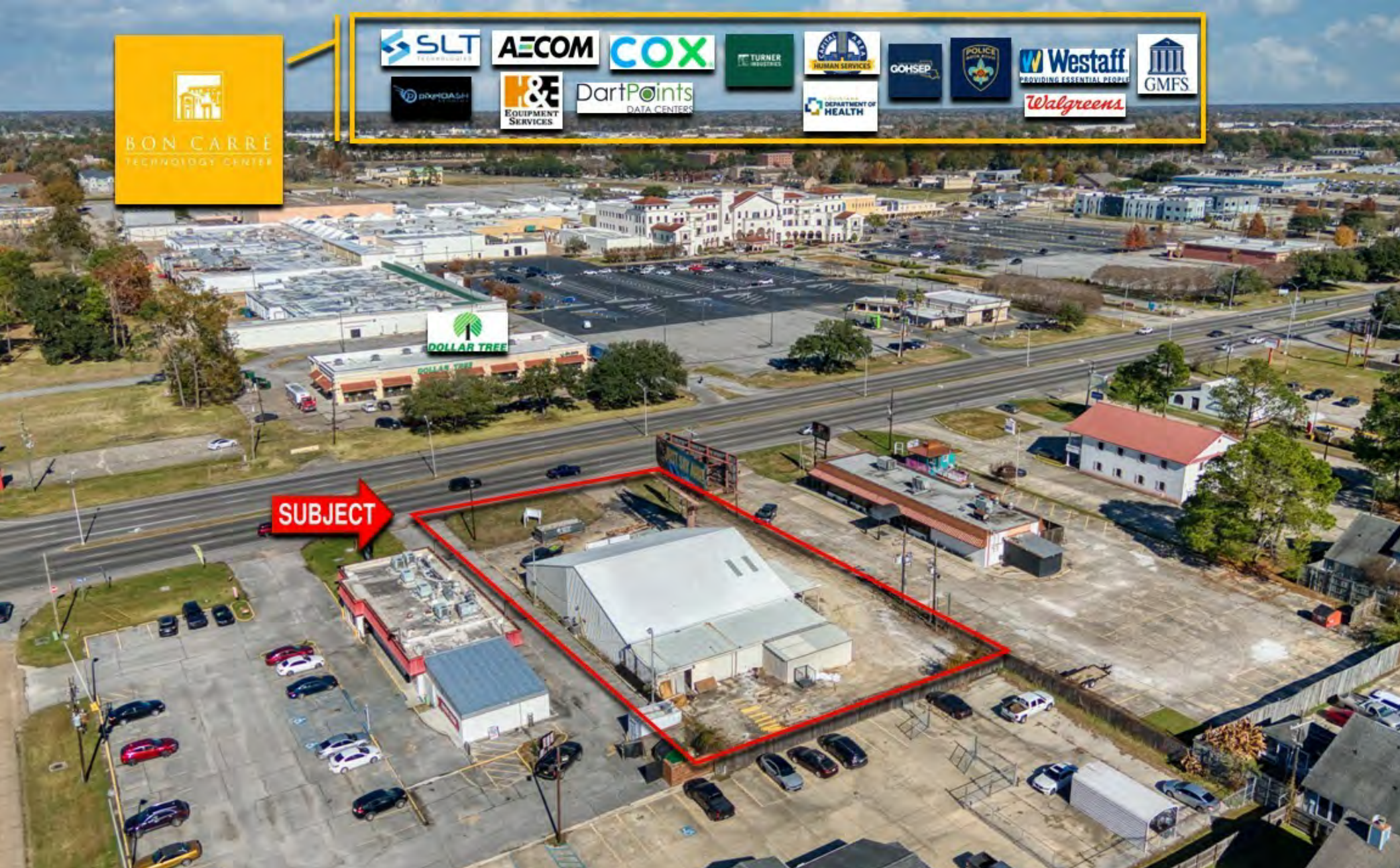
Florida Blvd.

CARMEN AUSTIN, MBA, CCIM, SIOR  
Associate Broker & Retail Specialist  
225.930.6256  
carmen@sr-cre.com

SAURAGE ROTENBERG COMMERCIAL REAL ESTATE, LLC  
5135 Bluebonnet Boulevard  
Baton Rouge, LA 70809  
225.766.0000 | sauragerotenberg.com

The information contained herein has either been given to us by property owners or is from sources deemed reliable and is believed to be correct, it is not in any way warranted or guaranteed by Saurage Rotenberg Commercial Real Estate. This information is submitted subject to errors, omissions, changes in price, rental or other conditions, withdrawal without notice, and to any special listing conditions imposed by the principals. Licensed in Louisiana & Mississippi.



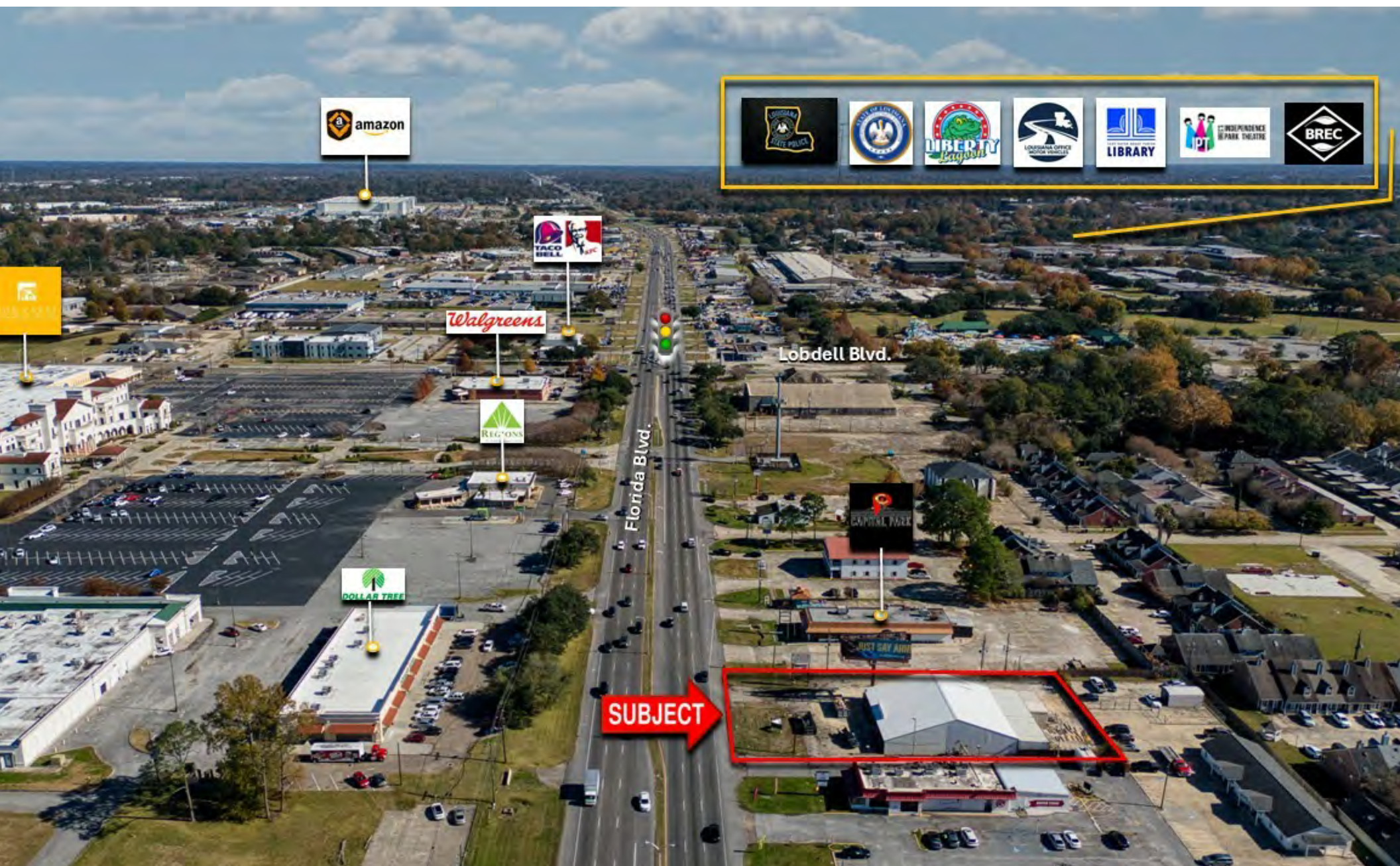


CARMEN AUSTIN, MBA, CCIM, SIOR  
Associate Broker & Retail Specialist  
225.930.6256  
carmen@sr-cre.com

SAURAGE ROTENBERG COMMERCIAL REAL ESTATE, LLC  
5135 Bluebonnet Boulevard  
Baton Rouge, LA 70809  
225.766.0000 | sauragerotenberg.com

The information contained herein has either been given to us by property owners or is from sources deemed reliable and is believed to be correct, it is not in any way warranted or guaranteed by Saurage Rotenberg Commercial Real Estate. This information is submitted subject to errors, omissions, changes in price, rental or other conditions, withdrawal without notice, and to any special listing conditions imposed by the principals. Licensed in Louisiana & Mississippi.





CARMEN AUSTIN, MBA, CCIM, SIOR  
Associate Broker & Retail Specialist  
225.930.6256  
carmen@sr-cre.com

SAURAGE ROTENBERG COMMERCIAL REAL ESTATE, LLC  
5135 Bluebonnet Boulevard  
Baton Rouge, LA 70809  
225.766.0000 | sauragerotenberg.com

The information contained herein has either been given to us by property owners or is from sources deemed reliable and is believed to be correct, it is not in any way warranted or guaranteed by Saurage Rotenberg Commercial Real Estate. This information is submitted subject to errors, omissions, changes in price, rental or other conditions, withdrawal without notice, and to any special listing conditions imposed by the principals. Licensed in Louisiana & Mississippi.





CARMEN AUSTIN, MBA, CCIM, SIOR  
Associate Broker & Retail Specialist  
225.930.6256  
carmen@sr-cre.com

SAURAGE ROTENBERG COMMERCIAL REAL ESTATE, LLC  
5135 Bluebonnet Boulevard  
Baton Rouge, LA 70809  
225.766.0000 | sauragerotenberg.com

The information contained herein has either been given to us by property owners or is from sources deemed reliable and is believed to be correct, it is not in any way warranted or guaranteed by Saurage Rotenberg Commercial Real Estate. This information is submitted subject to errors, omissions, changes in price, rental or other conditions, withdrawal without notice, and to any special listing conditions imposed by the principals. Licensed in Louisiana & Mississippi.





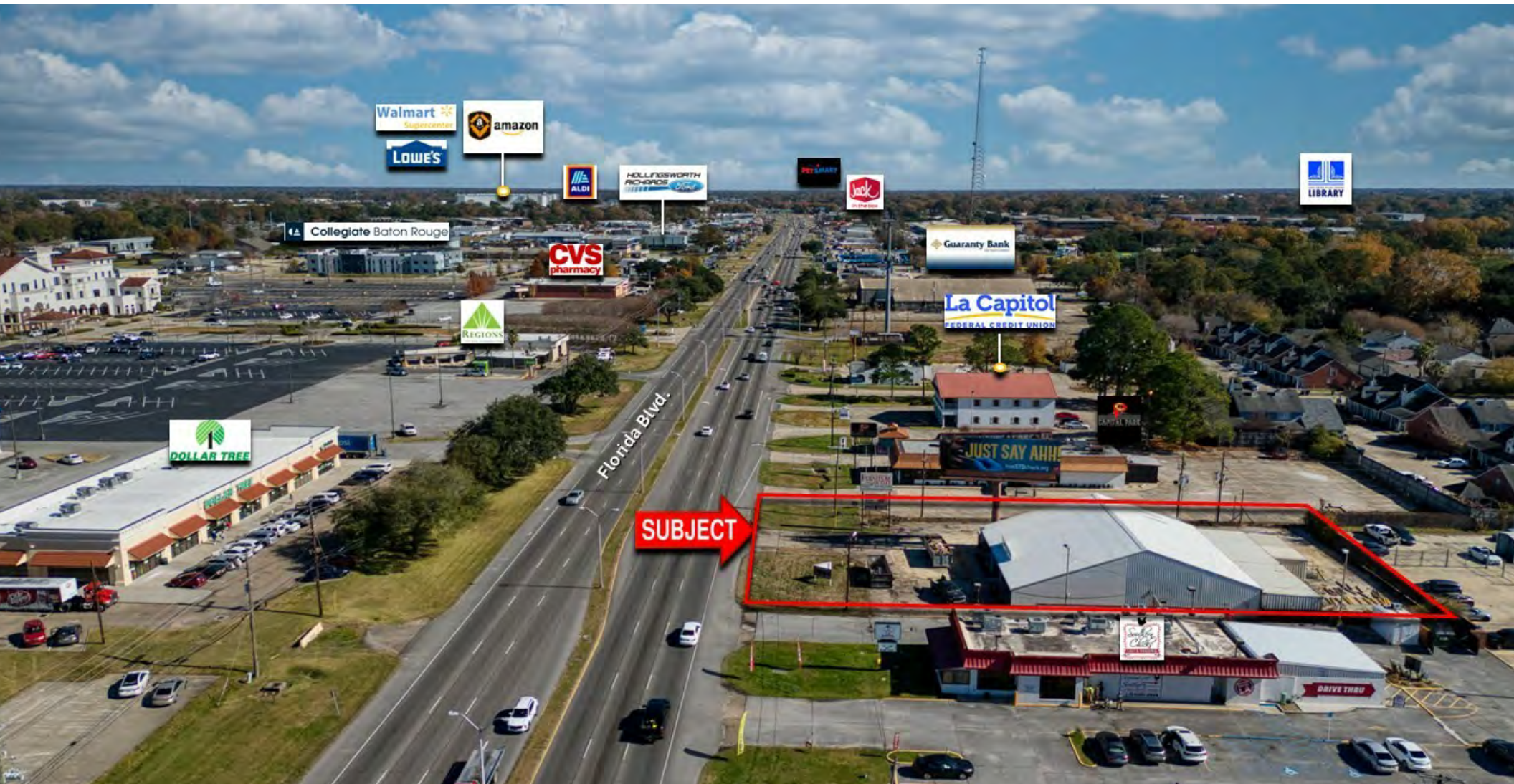
**SAURAGE ROTENBERG™**  
COMMERCIAL REAL ESTATE

# NEWLY REMODELED RETAIL STRIP CENTER WITH DRIVE-THRU

7122 FLORIDA BLVD, BATON ROUGE, LA 70806

FOR LEASE

5,760 SF



CARMEN AUSTIN, MBA, CCIM, SIOR  
Associate Broker & Retail Specialist  
225.930.6256  
carmen@sr-cre.com

SAURAGE ROTENBERG COMMERCIAL REAL ESTATE, LLC  
5135 Bluebonnet Boulevard  
Baton Rouge, LA 70809  
225.766.0000 | sauragerotenberg.com

The information contained herein has either been given to us by property owners or is from sources deemed reliable and is believed to be correct, it is not in any way warranted or guaranteed by Saurage Rotenberg Commercial Real Estate. This information is submitted subject to errors, omissions, changes in price, rental or other conditions, withdrawal without notice, and to any special listing conditions imposed by the principals. Licensed in Louisiana & Mississippi.





**CARMEN AUSTIN, MBA, CCIM, SIOR**  
 Associate Broker & Retail Specialist  
 225.930.6256  
[carmen@sr-cre.com](mailto:carmen@sr-cre.com)

**SAURAGE ROTENBERG COMMERCIAL REAL ESTATE, LLC**  
 5135 Bluebonnet Boulevard  
 Baton Rouge, LA 70809  
 225.766.0000 | [sauragerotenberg.com](http://sauragerotenberg.com)

The information contained herein has either been given to us by property owners or is from sources deemed reliable and is believed to be correct, it is not in any way warranted or guaranteed by Saurage Rotenberg Commercial Real Estate. This information is submitted subject to errors, omissions, changes in price, rental or other conditions, withdrawal without notice, and to any special listing conditions imposed by the principals. Licensed in Louisiana & Mississippi.



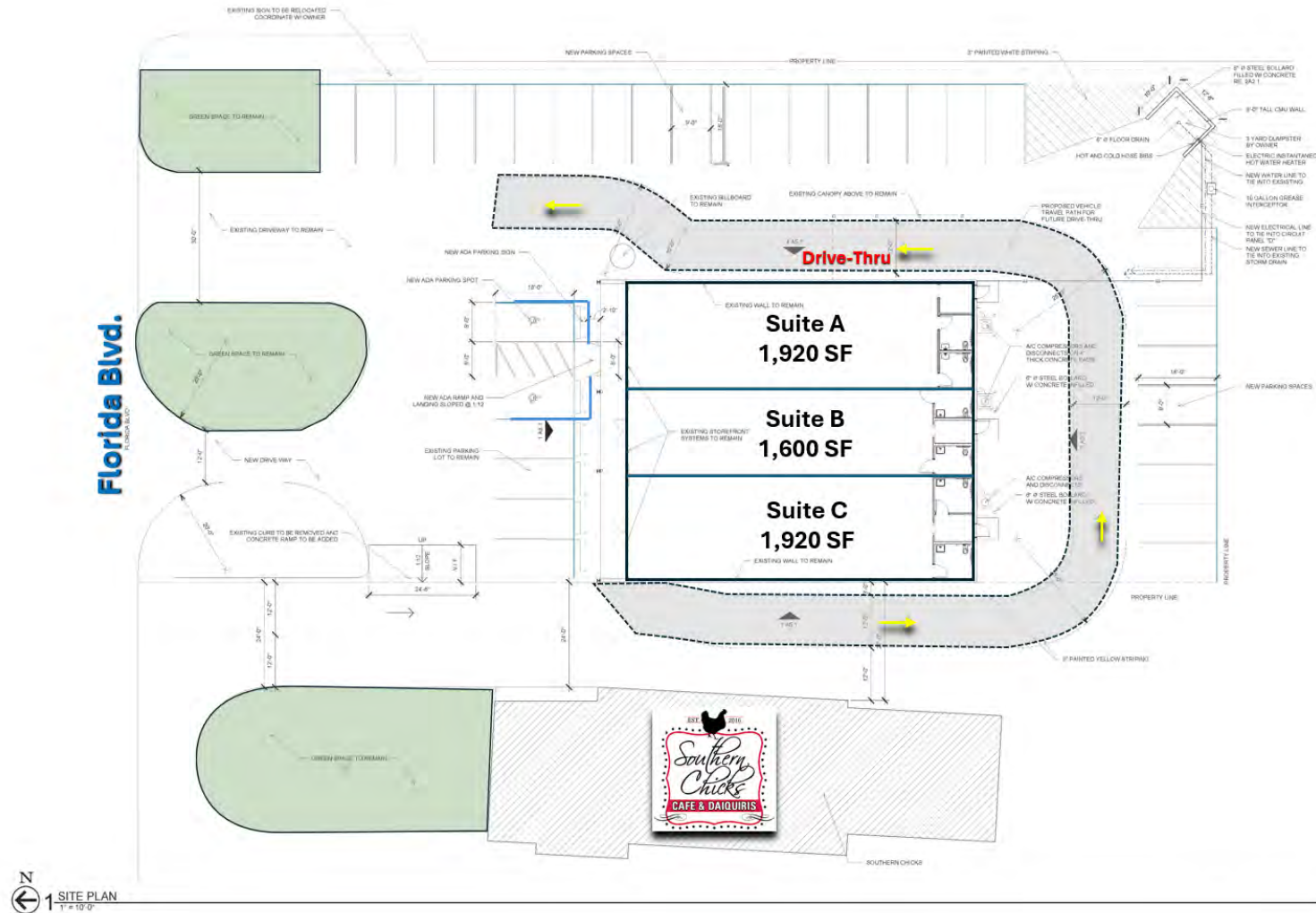


**SAURAGE ROTENBERG™**  
COMMERCIAL REAL ESTATE

# NEWLY REMODELED RETAIL STRIP CENTER WITH DRIVE-THRU

7122 FLORIDA BLVD, BATON ROUGE, LA 70806

**\$18 -20 SF**



**CARMEN AUSTIN, MBA, CCIM, SIOR**  
Associate Broker & Retail Specialist  
225.930.6256  
carmen@sr-cre.com

**SAURAGE ROTENBERG COMMERCIAL REAL ESTATE, LLC**  
5135 Bluebonnet Boulevard  
Baton Rouge, LA 70809  
225.766.0000 | sauragerotenberg.com

The information contained herein has either been given to us by property owners or is from sources deemed reliable and is believed to be correct, it is not in any way warranted or guaranteed by Saurage Rotenberg Commercial Real Estate. This information is submitted subject to errors, omissions, changes in price, rental or other conditions, withdrawal without notice, and to any special listing conditions imposed by the principals. Licensed in Louisiana & Mississippi.



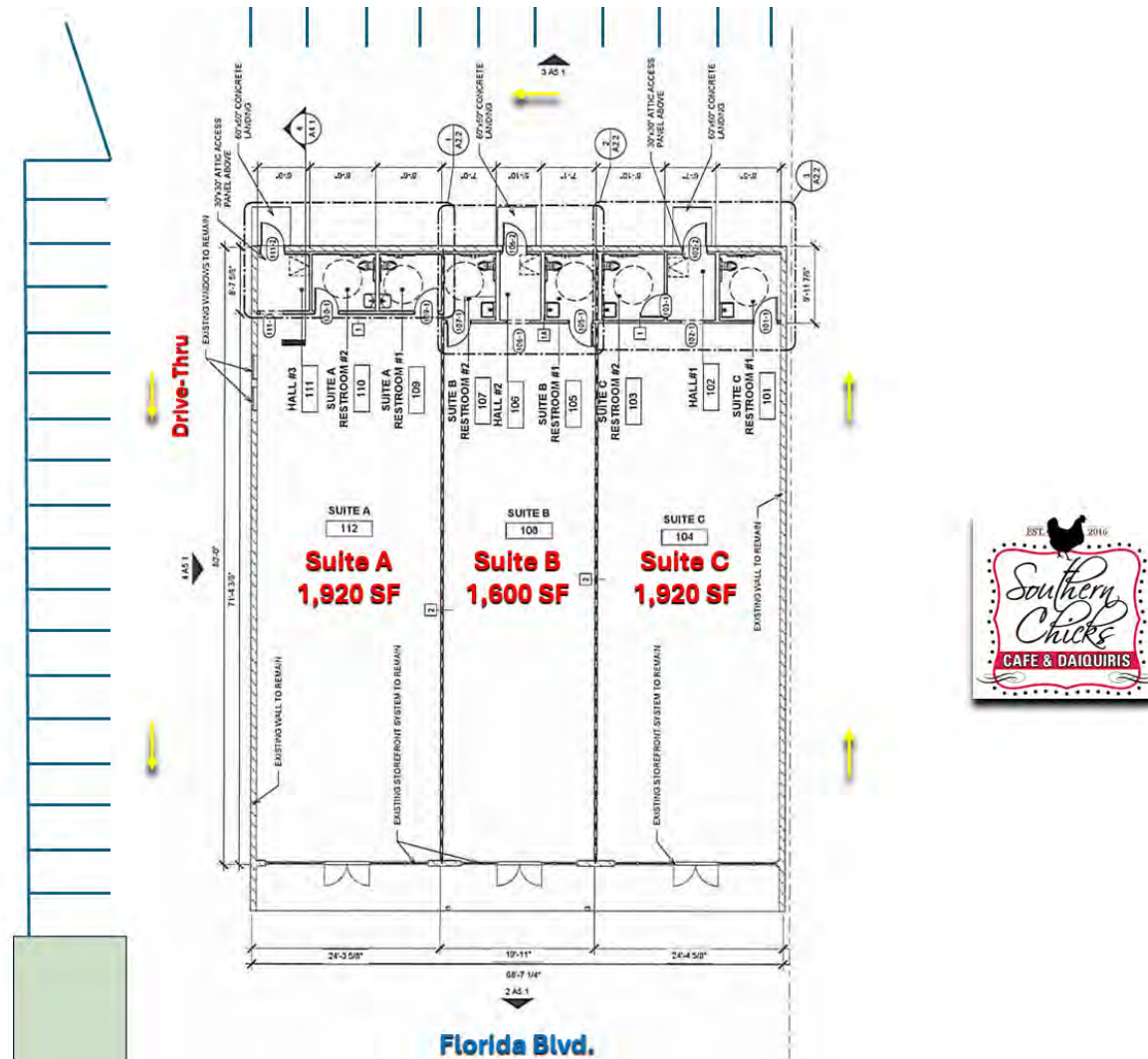


**SAURAGE ROTENBERG**  
COMMERCIAL REAL ESTATE

# NEWLY REMODELED RETAIL STRIP CENTER WITH DRIVE-THRU

7122 FLORIDA BLVD, BATON ROUGE, LA 70806

**\$18 -20 SF**



**CARMEN AUSTIN, MBA, CCIM, SIOR**  
Associate Broker & Retail Specialist  
225.930.6256  
carmen@sr-cre.com

**SAURAGE ROTENBERG COMMERCIAL REAL ESTATE, LLC**  
5135 Bluebonnet Boulevard  
Baton Rouge, LA 70809  
225.766.0000 | sauragerotenberg.com

The information contained herein has either been given to us by property owners or is from sources deemed reliable and is believed to be correct, it is not in any way warranted or guaranteed by Saurage Rotenberg Commercial Real Estate. This information is submitted subject to errors, omissions, changes in price, rental or other conditions, withdrawal without notice, and to any special listing conditions imposed by the principals. Licensed in Louisiana & Mississippi.



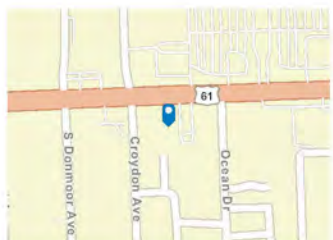
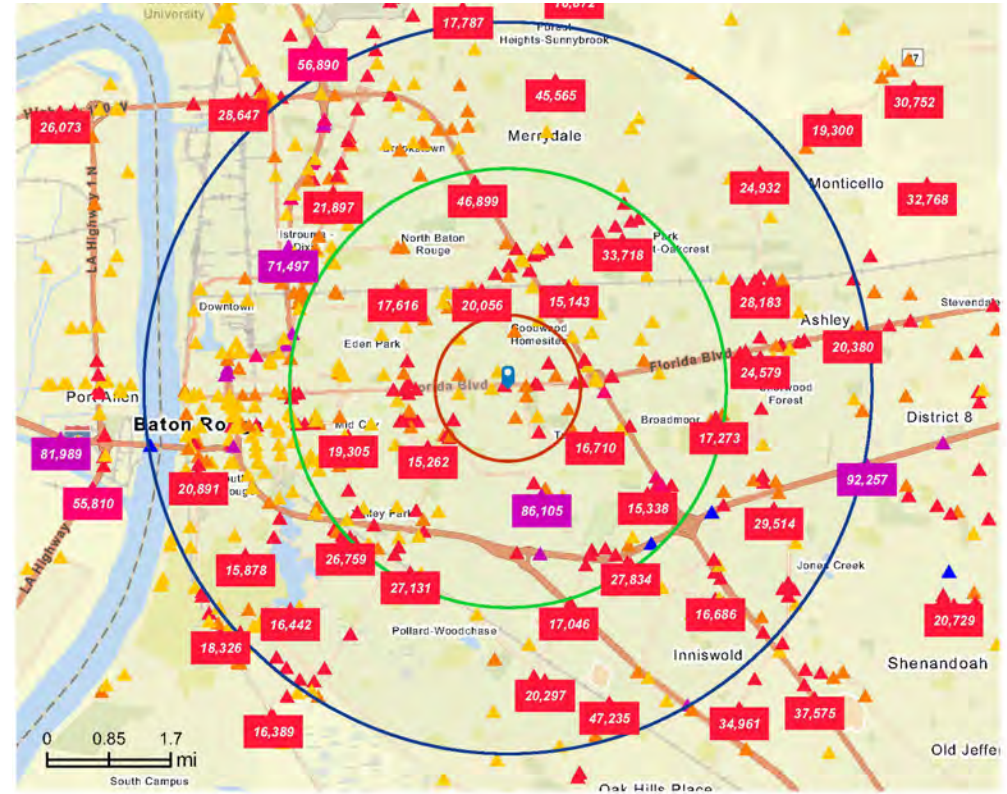


**SAURAGE ROTENBERG**  
COMMERCIAL REAL ESTATE

# NEWLY REMODELED RETAIL STRIP CENTER WITH DRIVE-THRU

7122 FLORIDA BLVD, BATON ROUGE, LA 70806

**\$18 -20 SF**



## Average Daily Traffic Volume

- ▲ Up to 8,000 vehicles per day
- ▲ 8,001 - 15,000
- ▲ 15,001 - 50,000
- ▲ 50,001 - 70,000
- ▲ 70,001 - 100,000
- ▲ More than 100,000 per day



## Average Daily Traffic Volume

- ▲ Up to 8,000 vehicles per day
- ▲ 8,001 - 15,000
- ▲ 15,001 - 50,000
- ▲ 50,001 - 70,000
- ▲ 70,001 - 100,000
- ▲ More than 100,000 per day



**CARMEN AUSTIN, MBA, CCIM, SIOR**  
Associate Broker & Retail Specialist  
225.930.6256  
carmen@sr-cre.com

**SAURAGE ROTENBERG COMMERCIAL REAL ESTATE, LLC**  
5135 Bluebonnet Boulevard  
Baton Rouge, LA 70809  
225.766.0000 | sauragerotenberg.com

The information contained herein has either been given to us by property owners or is from sources deemed reliable and is believed to be correct, it is not in any way warranted or guaranteed by Saurage Rotenberg Commercial Real Estate. This information is submitted subject to errors, omissions, changes in price, rental or other conditions, withdrawal without notice, and to any special listing conditions imposed by the principals. Licensed in Louisiana & Mississippi.





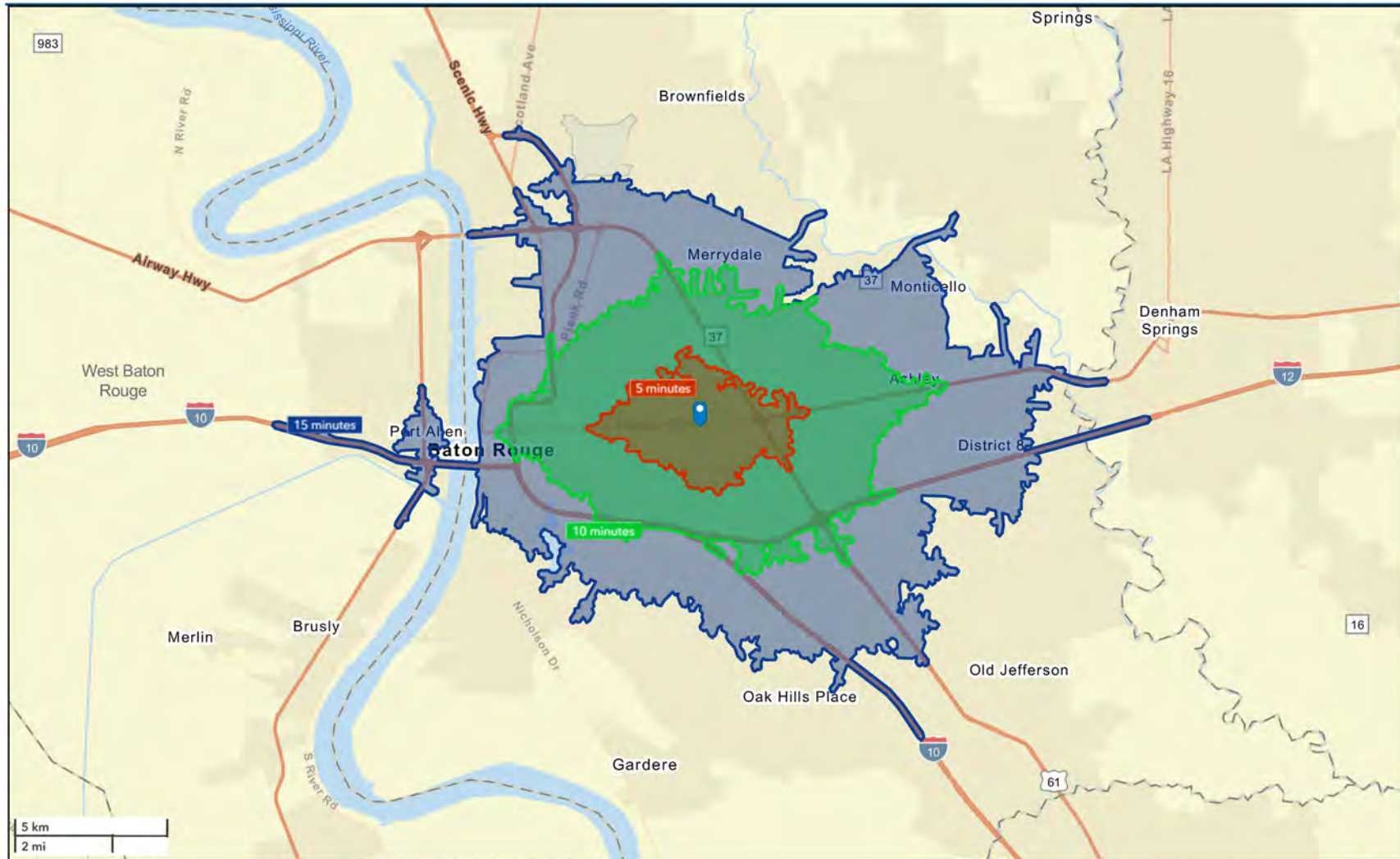
**SAURAGE ROTENBERG™**  
COMMERCIAL REAL ESTATE

# NEWLY REMODELED RETAIL STRIP CENTER WITH DRIVE-THRU

DRIVE TIME MAP: 5, 10, 15 MINUTE RADII

7122 FLORIDA BLVD, BATON ROUGE, LA 70806

**\$18 -20 SF**



**CARMEN AUSTIN, MBA, CCIM, SIOR**  
Associate Broker & Retail Specialist  
225.930.6256  
carmen@sr-cre.com

**SAURAGE ROTENBERG COMMERCIAL REAL ESTATE, LLC**  
5135 Bluebonnet Boulevard  
Baton Rouge, LA 70809  
225.766.0000 | sauragerotenberg.com

The information contained herein has either been given to us by property owners or is from sources deemed reliable and is believed to be correct, it is not in any way warranted or guaranteed by Saurage Rotenberg Commercial Real Estate. This information is submitted subject to errors, omissions, changes in price, rental or other conditions, withdrawal without notice, and to any special listing conditions imposed by the principals. Licensed in Louisiana & Mississippi.





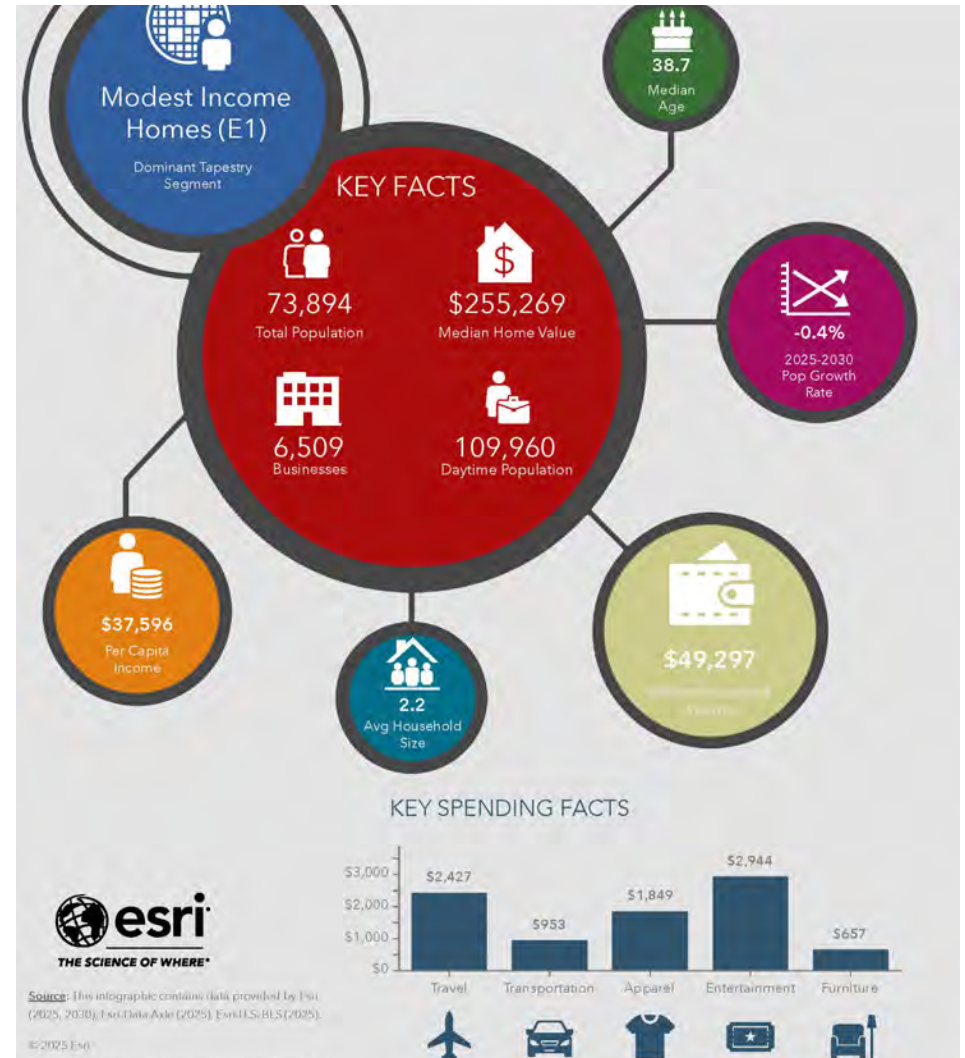
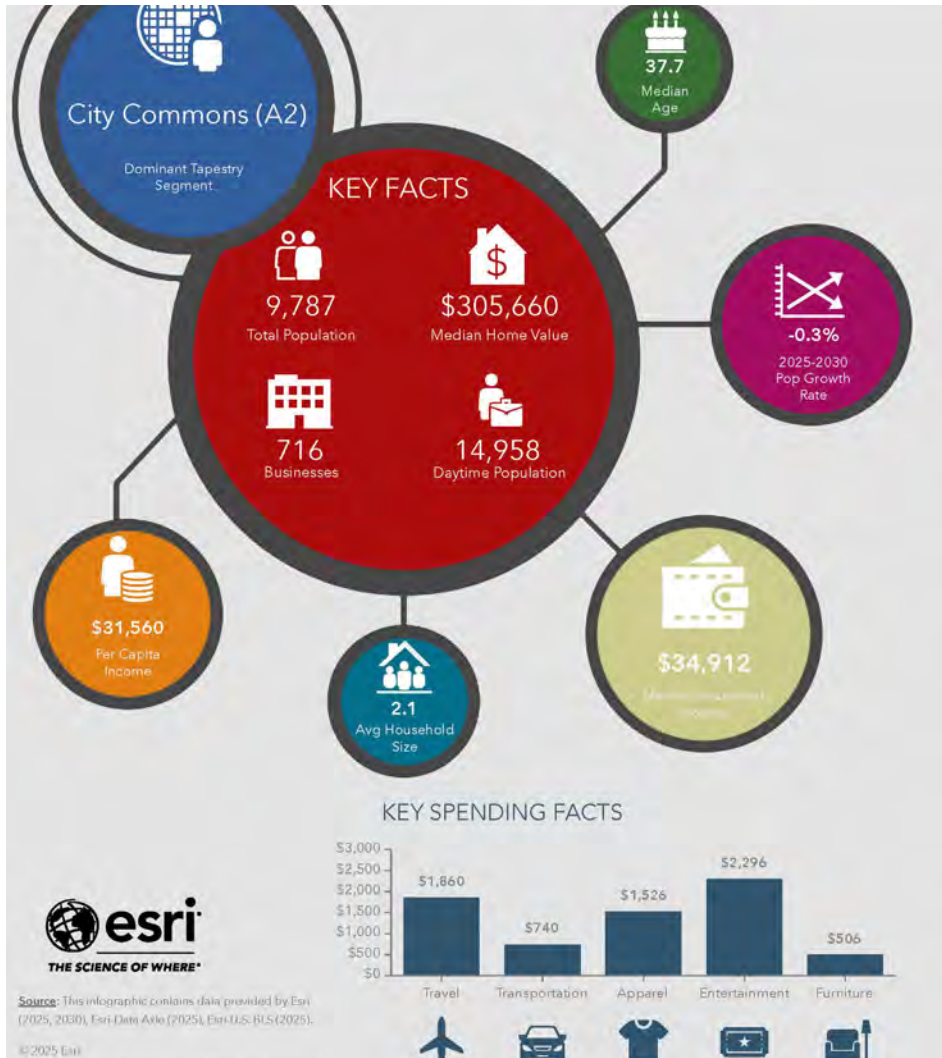
**SAURAGE ROTENBERG**  
COMMERCIAL REAL ESTATE

# NEWLY REMODELED RETAIL STRIP CENTER WITH DRIVE-THRU

DEMOGRAPHIC KEY FACTS: 1 MILE (LEFT) & 3 MILES (RIGHT)

7122 FLORIDA BLVD, BATON ROUGE, LA 70806

**\$18 -20 SF**



**CARMEN AUSTIN, MBA, CCIM, SIOR**  
Associate Broker & Retail Specialist  
225.930.6256  
carmen@sr-cre.com

**SAURAGE ROTENBERG COMMERCIAL REAL ESTATE, LLC**  
5135 Bluebonnet Boulevard  
Baton Rouge, LA 70809  
225.766.0000 | sauragerotenberg.com

The information contained herein has either been given to us by property owners or is from sources deemed reliable and is believed to be correct, it is not in any way warranted or guaranteed by Saurage Rotenberg Commercial Real Estate. This information is submitted subject to errors, omissions, changes in price, rental or other conditions, withdrawal without notice, and to any special listing conditions imposed by the principals. Licensed in Louisiana & Mississippi.



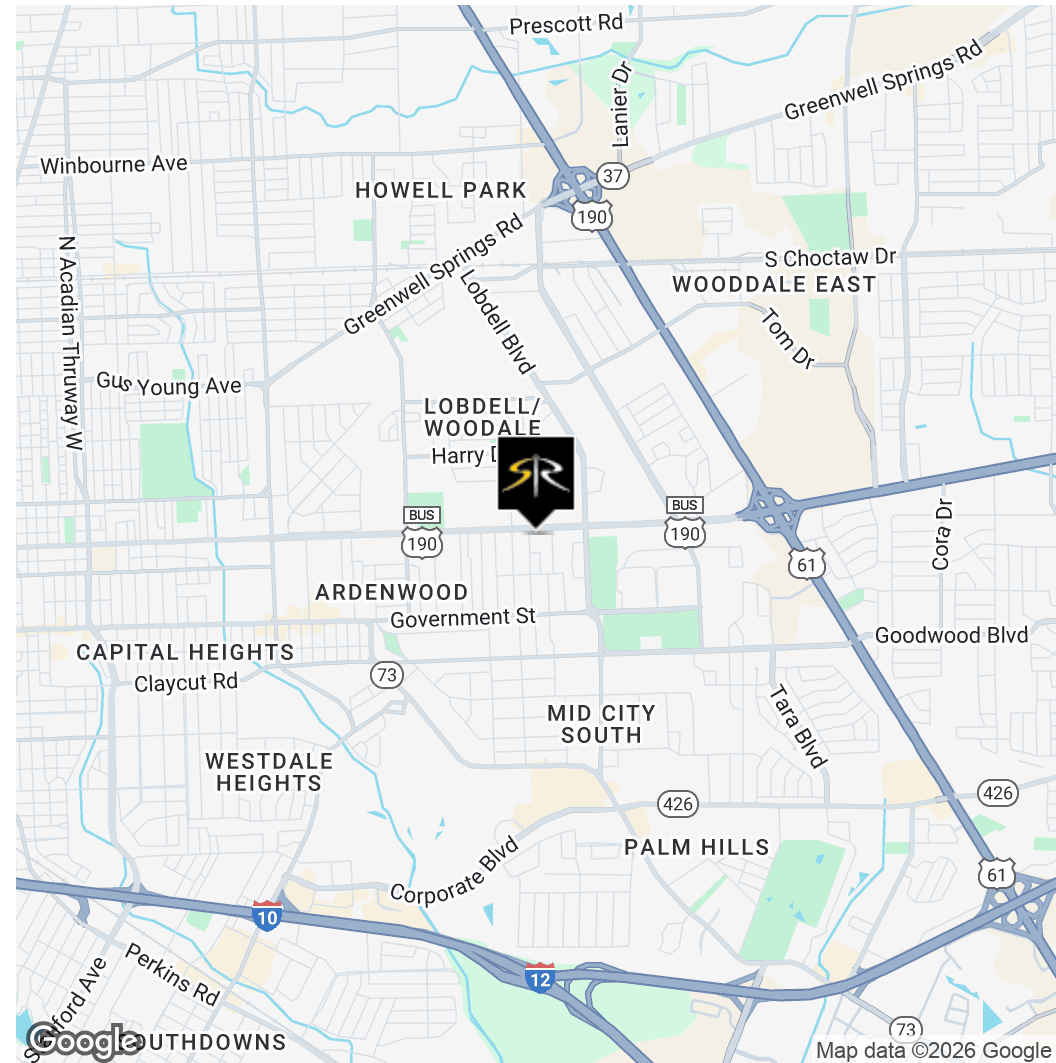
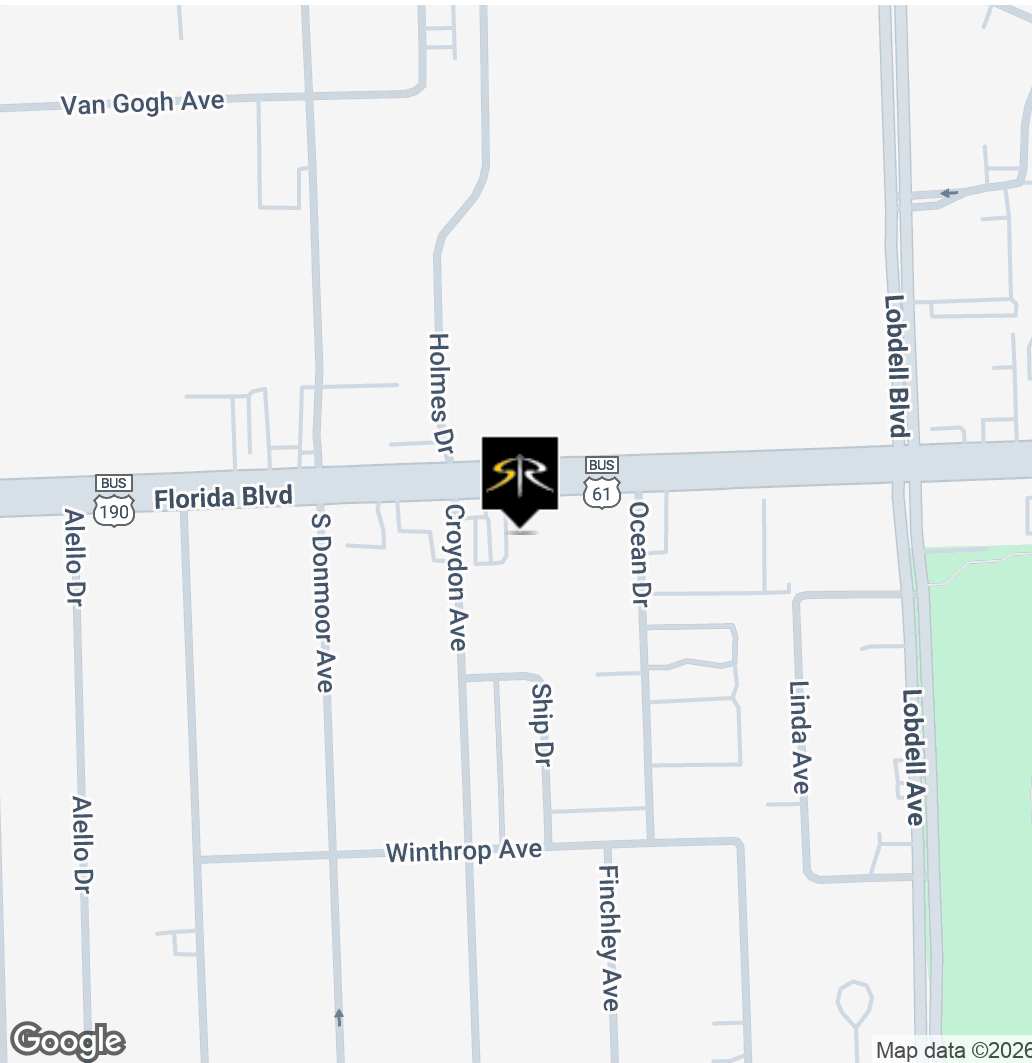


**SAURAGE ROTENBERG™**  
COMMERCIAL REAL ESTATE

# NEWLY REMODELED RETAIL STRIP CENTER WITH DRIVE-THRU

7122 FLORIDA BLVD, BATON ROUGE, LA 70806

**\$18 -20 SF**



**CARMEN AUSTIN, MBA, CCIM, SIOR**  
Associate Broker & Retail Specialist  
225.930.6256  
carmen@sr-cre.com

**SAURAGE ROTENBERG COMMERCIAL REAL ESTATE, LLC**  
5135 Bluebonnet Boulevard  
Baton Rouge, LA 70809  
225.766.0000 | sauragerotenberg.com

The information contained herein has either been given to us by property owners or is from sources deemed reliable and is believed to be correct, it is not in any way warranted or guaranteed by Saurage Rotenberg Commercial Real Estate. This information is submitted subject to errors, omissions, changes in price, rental or other conditions, withdrawal without notice, and to any special listing conditions imposed by the principals. Licensed in Louisiana & Mississippi.





**SAURAGE ROTENBERG™**  
COMMERCIAL REAL ESTATE

# NEWLY REMODELED RETAIL STRIP CENTER WITH DRIVE-THRU

7122 FLORIDA BLVD, BATON ROUGE, LA 70806

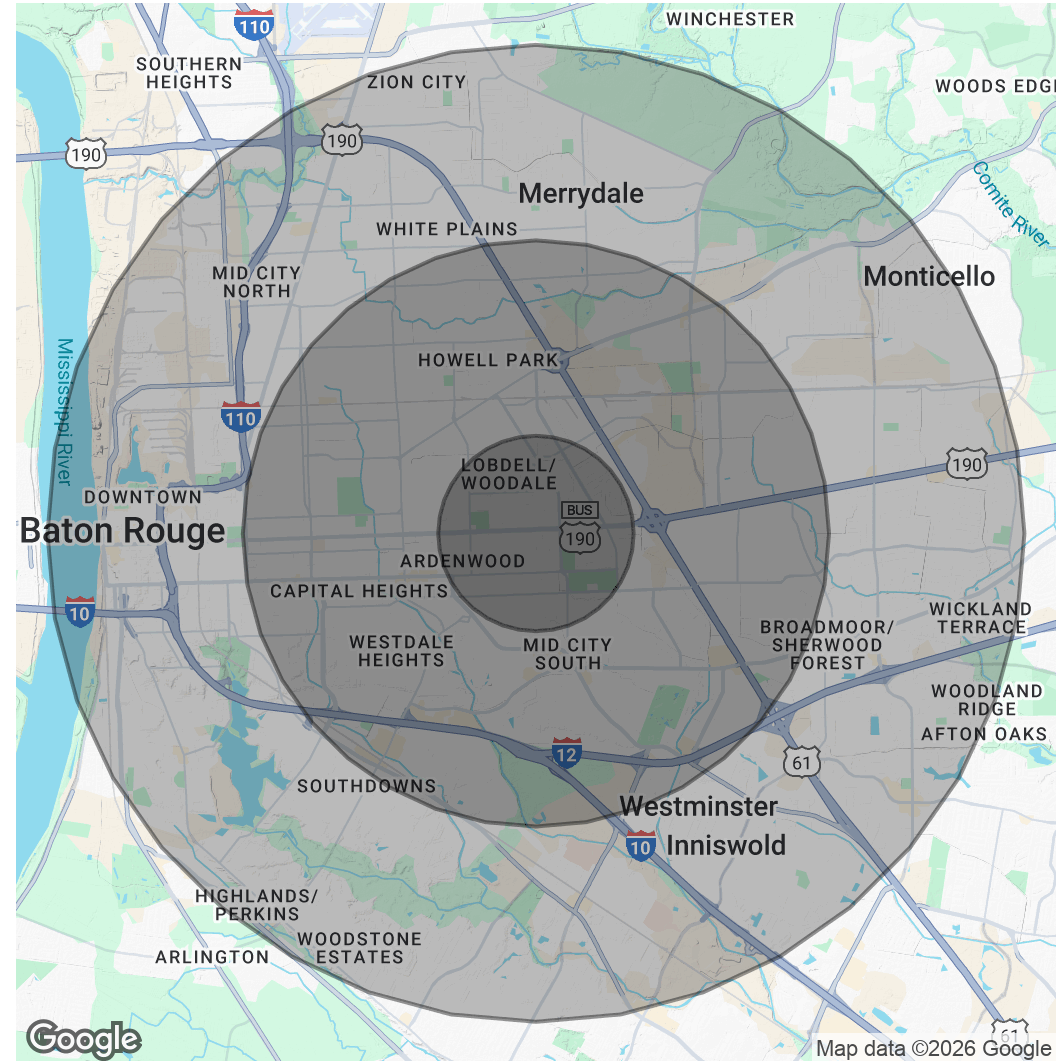
**\$18 -20 SF**

POPULATION	1 MILE	3 MILES	5 MILES
Total Population	10,130	74,124	203,527
Average Age	39	40	39
Average Age (Male)	37	39	37
Average Age (Female)	41	42	40

HOUSEHOLDS & INCOME	1 MILE	3 MILES	5 MILES
Total Households	4,685	32,334	83,826
# Of Persons Per HH	2.2	2.3	2.4
Average HH Income	\$54,534	\$75,895	\$76,099
Average House Value	\$244,023	\$289,211	\$290,965

*Demographics data derived from AlphaMap*



**CARMEN AUSTIN, MBA, CCIM, SIOR**  
Associate Broker & Retail Specialist  
225.930.6256  
carmen@sr-cre.com

**SAURAGE ROTENBERG COMMERCIAL REAL ESTATE, LLC**  
5135 Bluebonnet Boulevard  
Baton Rouge, LA 70809  
225.766.0000 | sauragerotenberg.com

The information contained herein has either been given to us by property owners or is from sources deemed reliable and is believed to be correct, it is not in any way warranted or guaranteed by Saurage Rotenberg Commercial Real Estate. This information is submitted subject to errors, omissions, changes in price, rental or other conditions, withdrawal without notice, and to any special listing conditions imposed by the principals. Licensed in Louisiana & Mississippi.



For more information, please contact:

## CARMEN AUSTIN, MBA, CCIM, SIOR

Associate Broker & Retail Specialist

**DIRECT:** 225.930.6256  
**MOBILE:** 225.328.1778  
**OFFICE:** 225.766.0000  
**EMAIL:** carmen@sr-cre.com



**SAURAGE ROTENBERG**  
COMMERCIAL REAL ESTATE

SAURAGE ROTENBERG COMMERCIAL REAL ESTATE, LLC  
5135 BLUEBONNET BOULEVARD  
BATON ROUGE, LA 70809

**TEL:** 225.766.0000

**WEB:** SAURAGEROTENBERG.COM

The information contained herein has either been given to us by property owners or is from sources deemed reliable and is believed to be correct, it is not in any way warranted or guaranteed by Saurage Rotenberg Commercial Real Estate. This information is submitted subject to errors, omissions, changes in price, rental or other conditions, withdrawal without notice, and to any special listing conditions imposed by the principals. Licensed in Louisiana & Mississippi.

