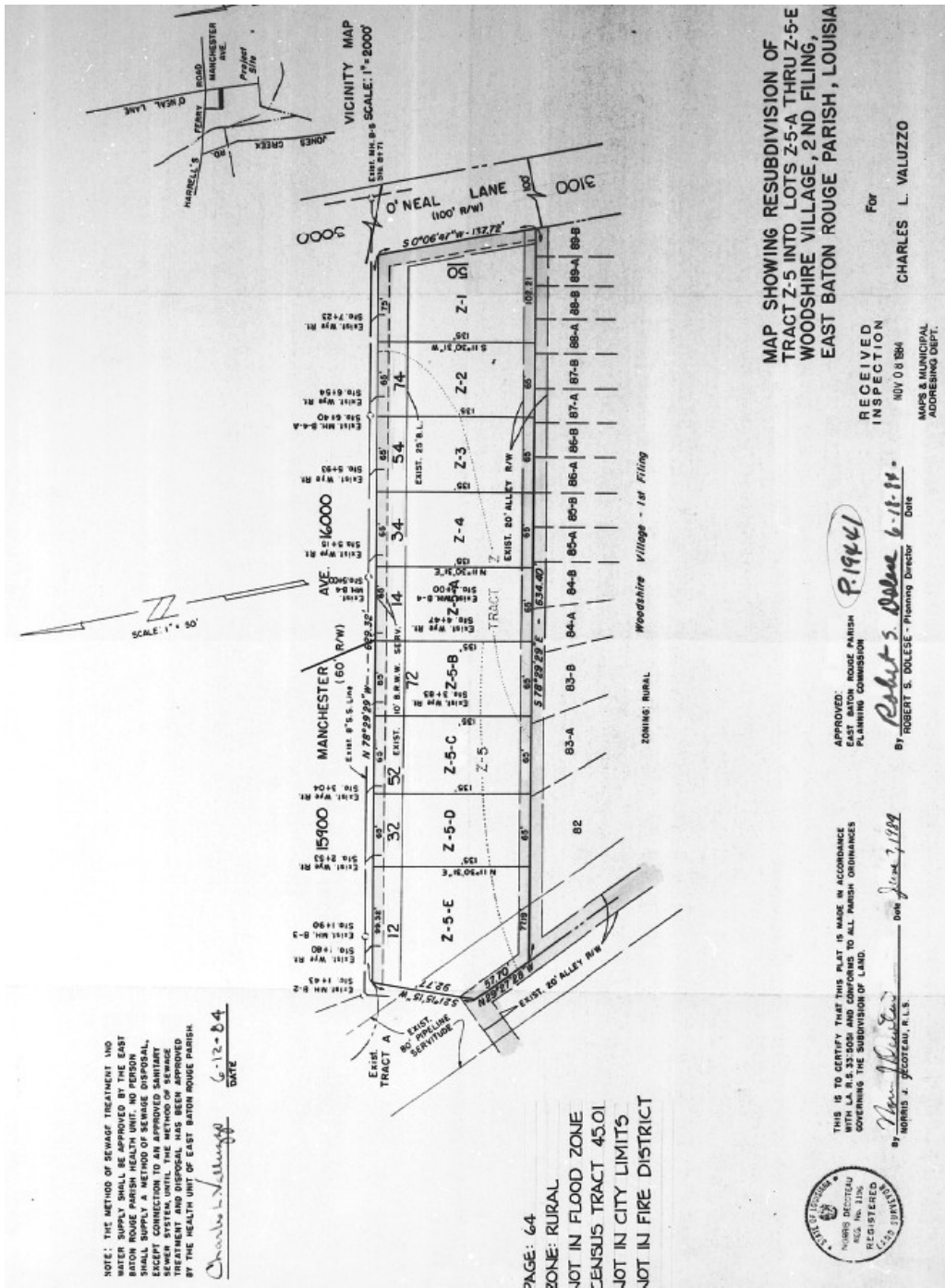


SITE SURVEY



MAP SHOWING RESUBDIVISION OF TRACT Z-5 INTO LOTS Z-5-A THRU Z-5-E WOODSHIRE VILLAGE, 2ND FILING, EAST BATON ROUGE PARISH, LOUISIANA

RECEIVED INSPECTION
NOV 0 8 1984
MASS & MUNICIPAL ADDRESSING DEPT.

For
CHARLES L. VALUZZO

APPROVED:
EAST BATON ROUGE PARISH PLANNING COMMISSION

P. 19441

By: *Robert S. Dolue* 6-11-84
Date
By: ROBERT S. DOLESE - Planning Director

THIS IS TO CERTIFY THAT THIS PLAT IS MADE IN ACCORDANCE WITH LA R.S. 32:508 AND CONFORMS TO ALL PARISH ORDINANCES GOVERNING THE SUBDIVISION OF LAND.

Thomas J. ...
By: THOMAS J. ...
DATE: June 7, 1984

