

LAND FOR SALE

Greenwell Springs Road & Central Thruway

Central, LA 70739

Presented By:

Michael Cashio, CCIM

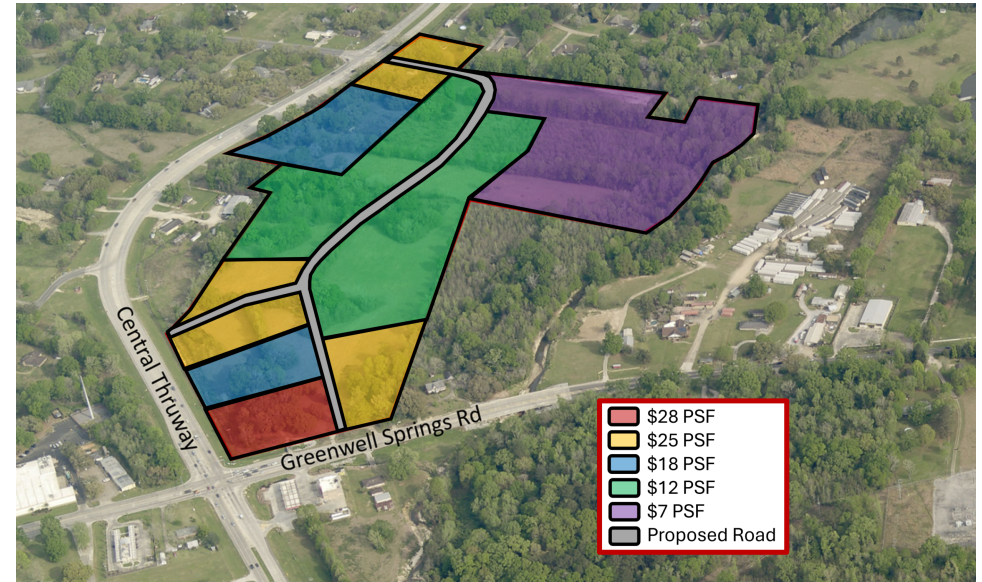
Commercial Sales & Leasing
O: 225.295.0800 | C: 225.247.9812
mcashio@latterblum.com

Ty Gose, SIOR, CCIM

Commercial Sales & Leasing
O: 225.295.0800 | C: 225.297.7808
ty@latterblum.com

Jake Loach, CCIM

Commercial Sales & Leasing
O: 225.295.0800 | C: 256.724.2764
jakeloach@latterblum.com



PROPERTY HIGHLIGHTS

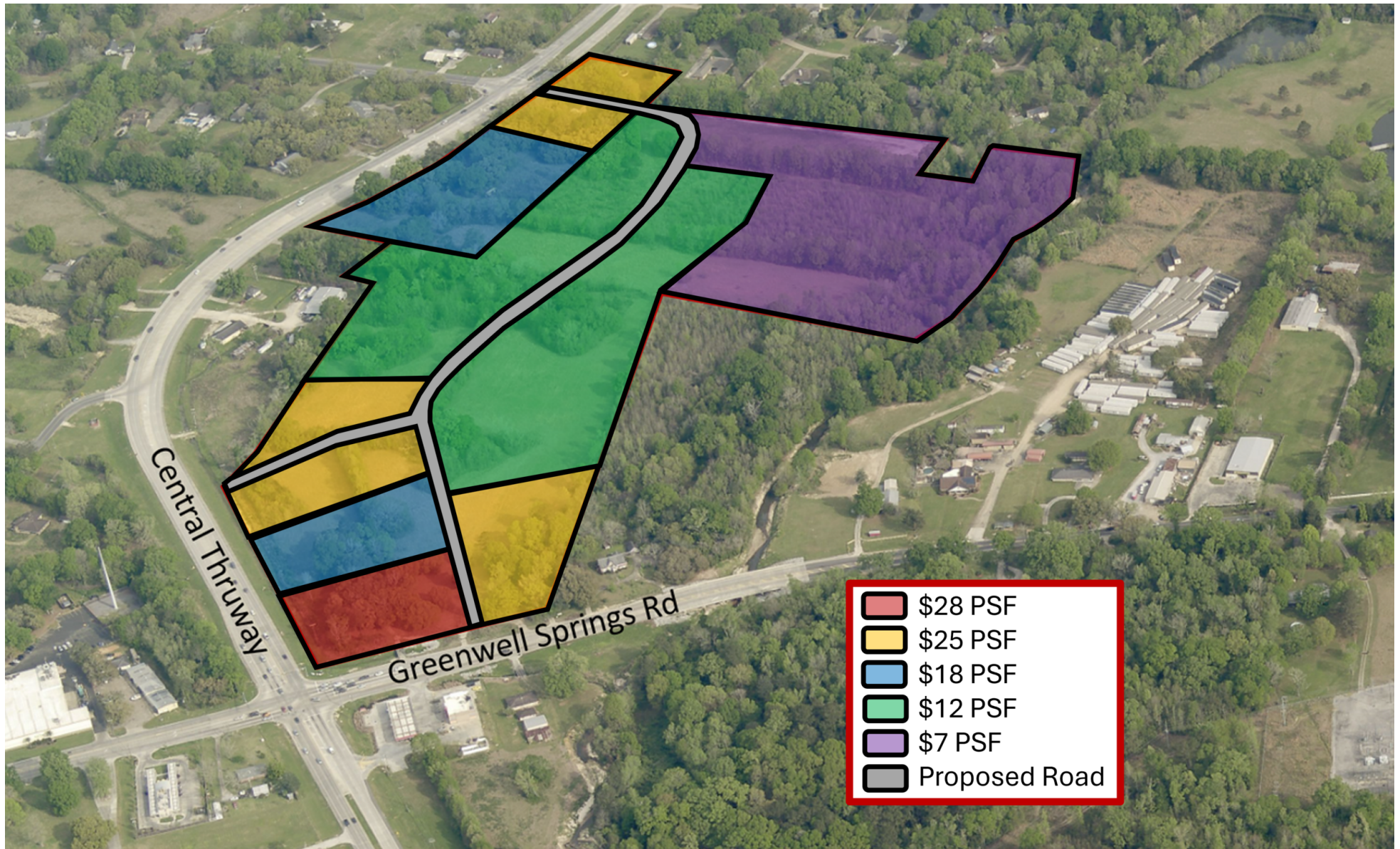
- 0.50 - 51 Acres Available for Sale
- Pad sites are available for purchase on the corner of Greenwell Springs and Central Thruway
- Potential for multiple different uses
- Contact Agent for more details

OFFERING SUMMARY

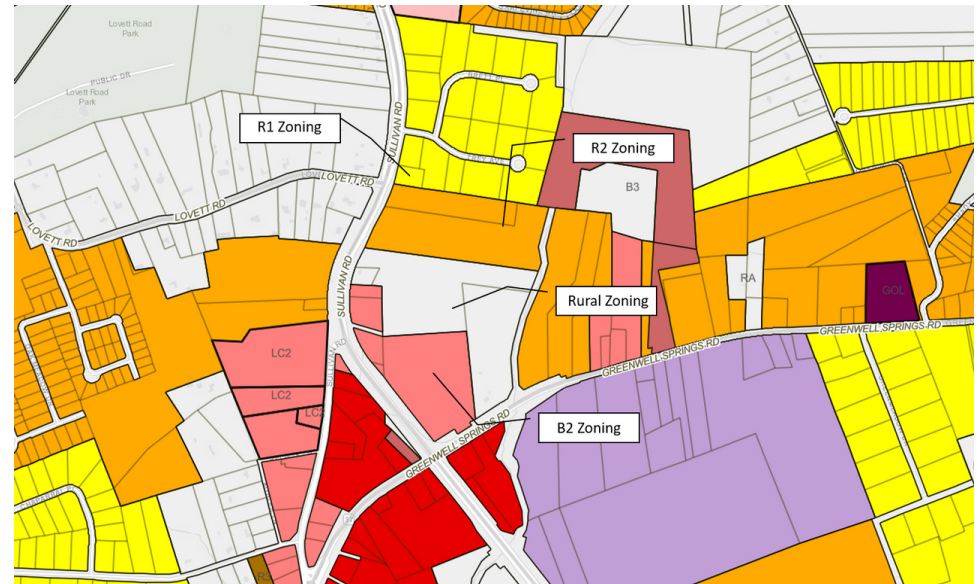
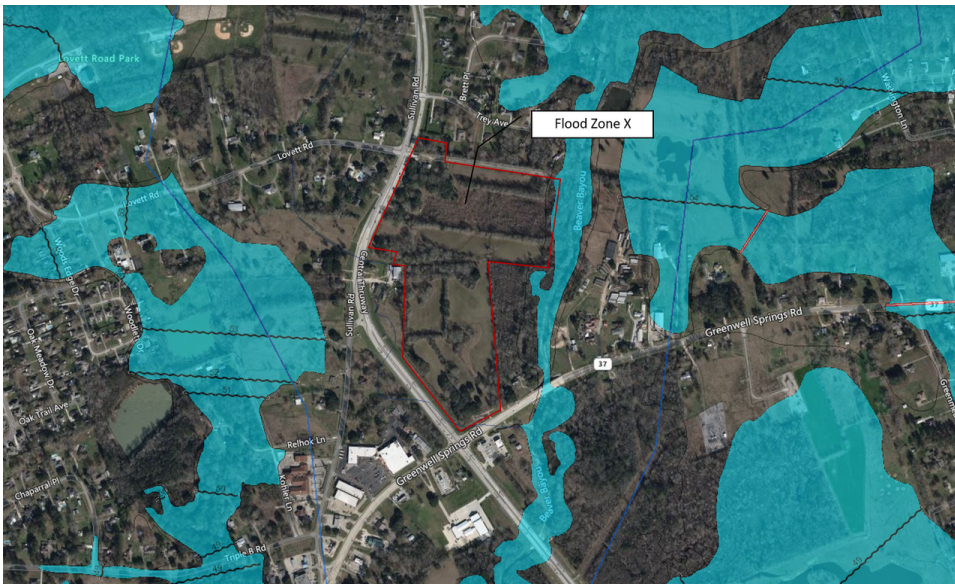
| | |
|-------------|-----------------------|
| Sale Price: | \$7.00 - \$28.00 / SF |
| Lot Size: | 51 Acres |

| DEMOGRAPHICS | 0.3 MILES | 0.5 MILES | 1 MILE |
|-------------------|-----------|-----------|-----------|
| Total Households | 17 | 116 | 670 |
| Total Population | 48 | 321 | 1,808 |
| Average HH Income | \$140,929 | \$129,574 | \$120,315 |

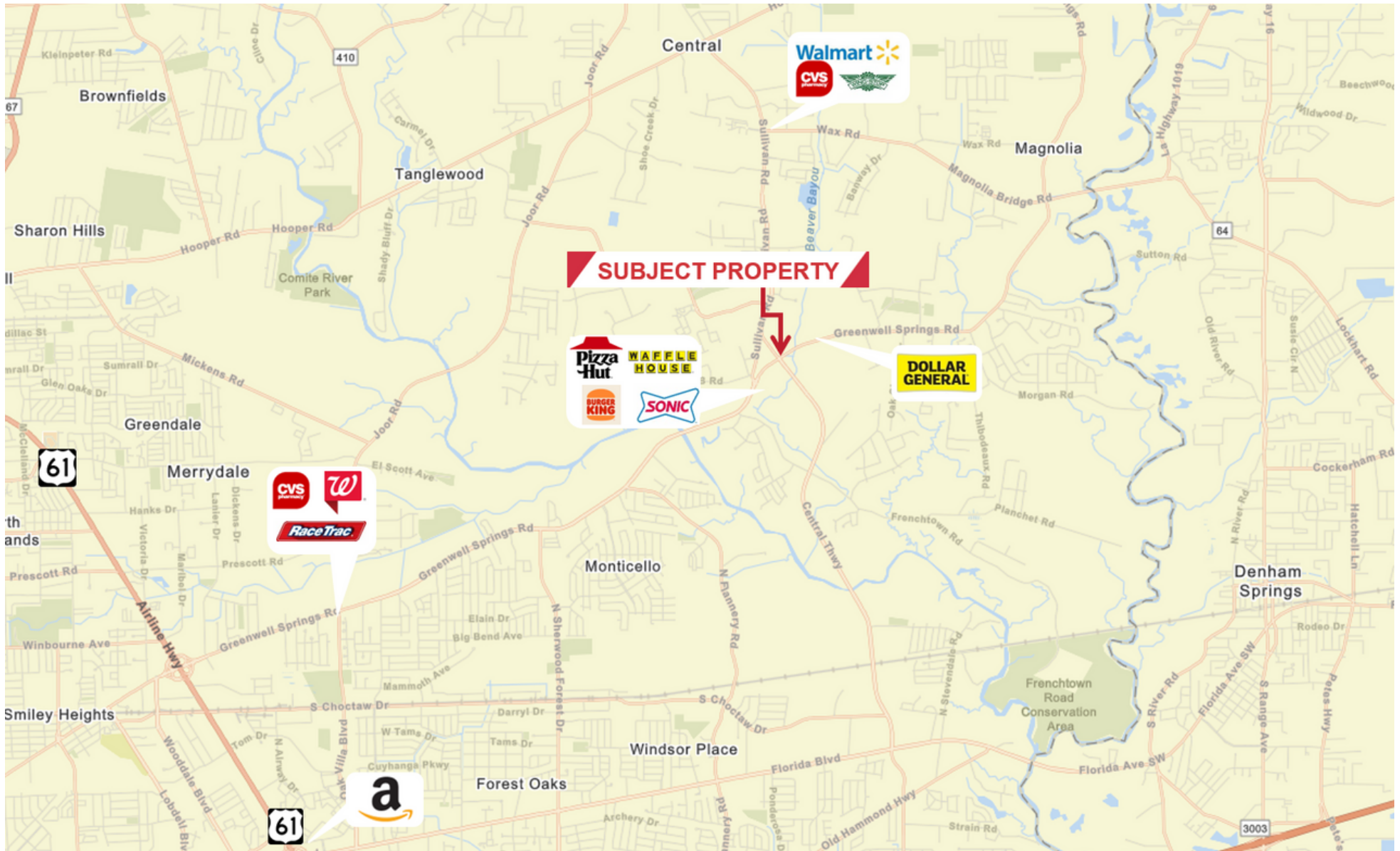
INFORMATION SUBJECT TO VERIFICATION & NO LIABILITY FOR ERRORS & OMISSION ASSUMED. // LICENSED IN LOUISIANA



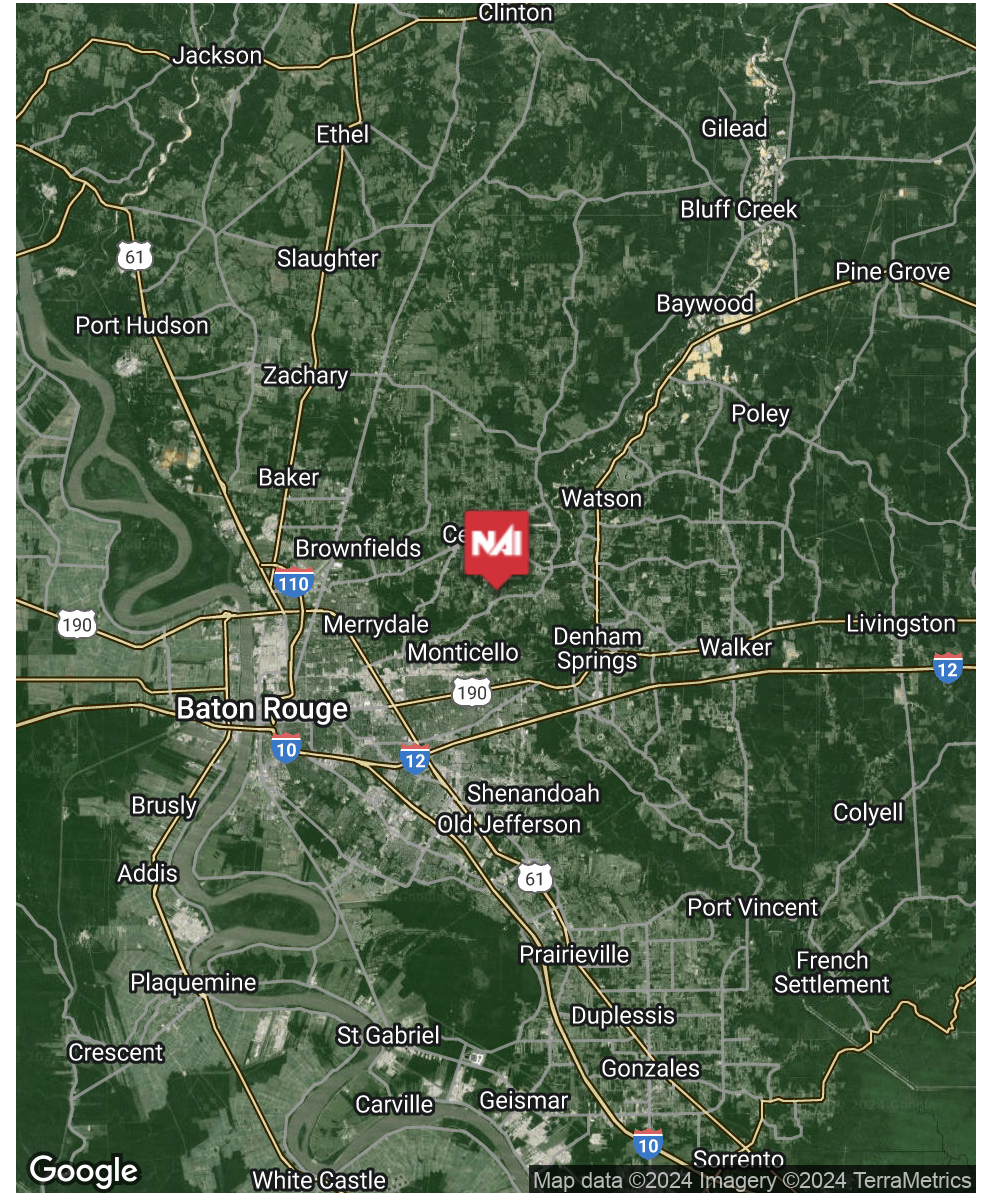
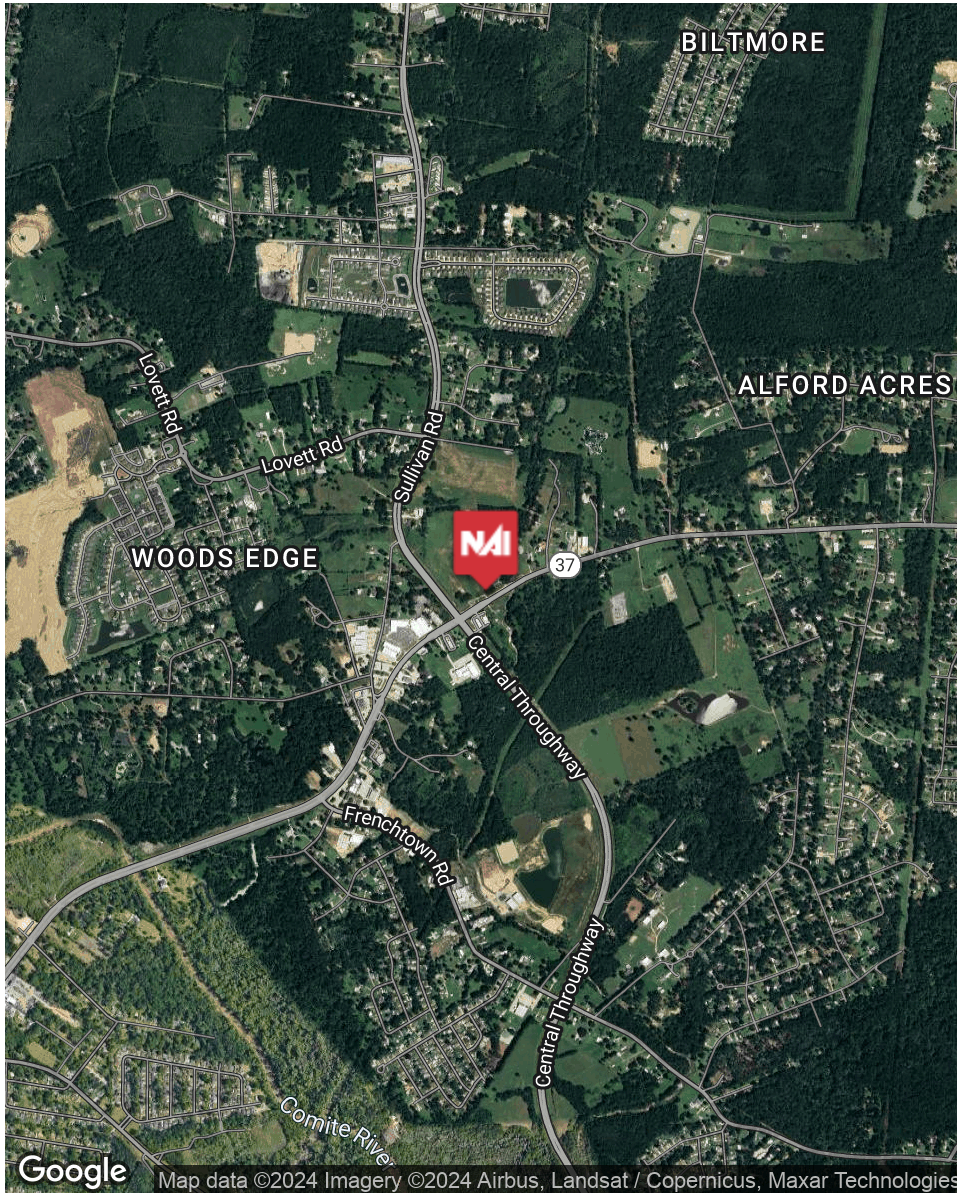
INFORMATION SUBJECT TO VERIFICATION & NO LIABILITY FOR ERRORS & OMISSION ASSUMED. // LICENSED IN LOUISIANA



INFORMATION SUBJECT TO VERIFICATION & NO LIABILITY FOR ERRORS & OMISSION ASSUMED. // LICENSED IN LOUISIANA



INFORMATION SUBJECT TO VERIFICATION & NO LIABILITY FOR ERRORS & OMISSION ASSUMED. // LICENSED IN LOUISIANA



INFORMATION SUBJECT TO VERIFICATION & NO LIABILITY FOR ERRORS & OMISSION ASSUMED. // LICENSED IN LOUISIANA



Central Thruway

Greenwell Springs Rd

For More Information:

Michael Cashio, CCIM

Commercial Sales & Leasing

O: 225.295.0800 | C: 225.247.9812

mcashio@latterblum.com

Ty Gose, SIOR, CCIM

Commercial Sales & Leasing

O: 225.295.0800 | C: 225.297.7808

ty@latterblum.com

Jake Loach, CCIM

Commercial Sales & Leasing

O: 225.295.0800 | C: 256.724.2764

jakeloach@latterblum.com

NAI Latter & Blum

1700 City Farm Drive
Baton Rouge, LA 70806

www.latterblum.com