



OFFERING SUMMARY

Sale Price:	\$225,000
Lot Size:	+/- 7.6 Acres

PROPERTY HIGHLIGHTS

- **+/- 7.6 TOTAL ACRES:** Located in St. John the Baptist Parish
- **Tract A:** +/- 2.9 Acres of Batture Land between Hwy. 628 and the Mississippi River with approx. 175' Mississippi River Frontage
- **Tract B:** +/- 37,000 SF, Corner portion of Hwy. 628 & and Bayou Steel Rd. (Hwy. 3217) with +/- 580' Hwy. 628 Frontage & +/- 325' Bayou Steel Frontage. Indicated in Flood Zone "X"
- **Tract C:** +/- 175,000 SF with +/- 3,500' Bayou Steel Frontage, indicated as Flood Zone "X"



BILL JEANSONNE

Commercial Investment Specialist
225.802.2932
bill@sr-cre.com

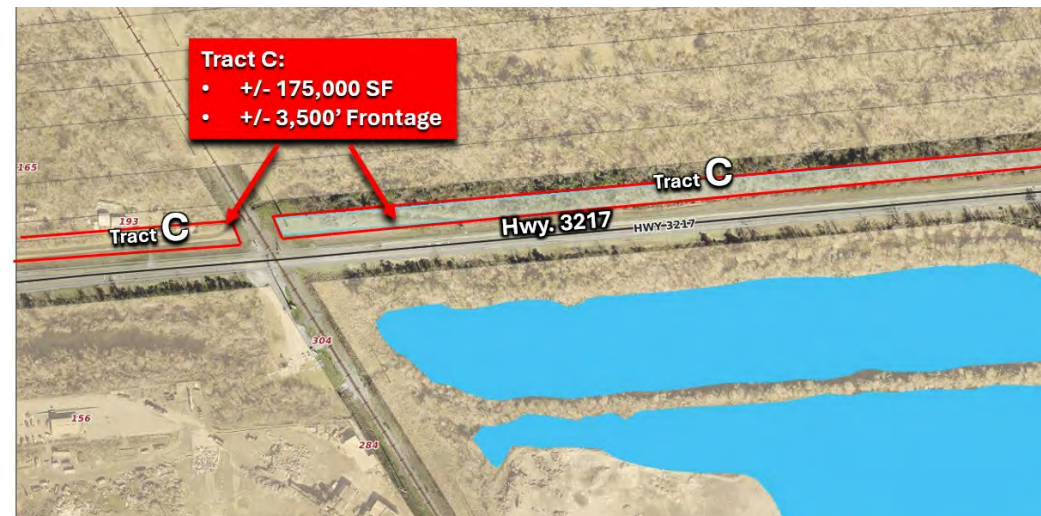
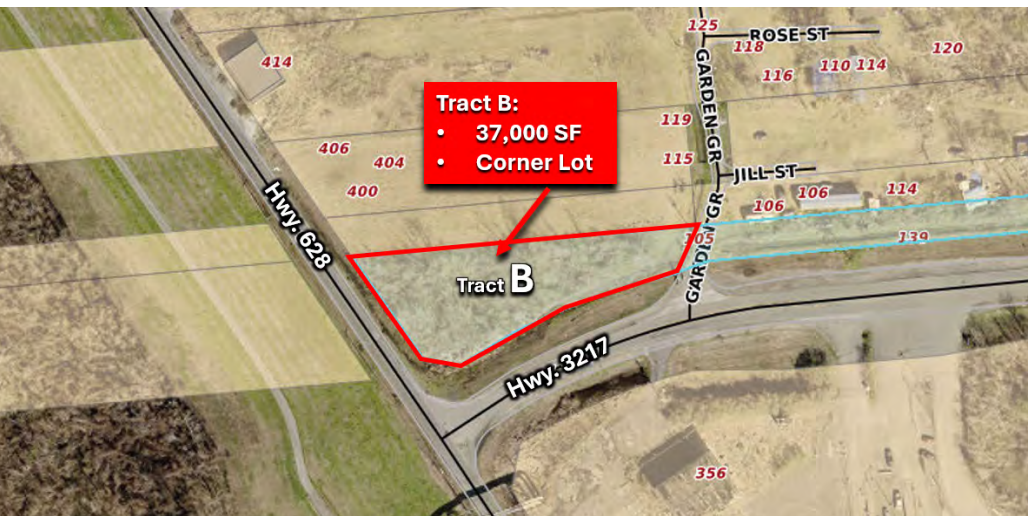
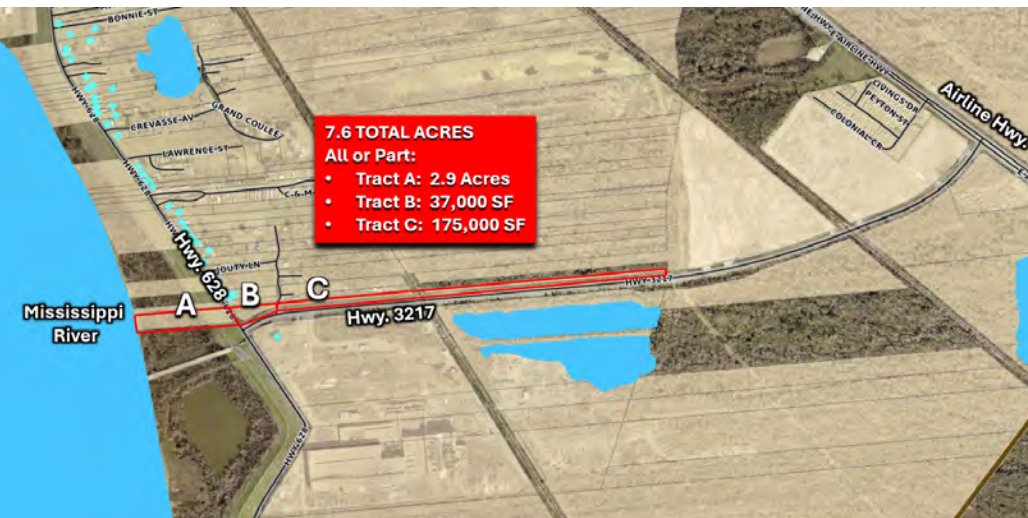
SAURAGE ROTENBERG COMMERCIAL REAL ESTATE, LLC

5135 Bluebonnet Boulevard
Baton Rouge, LA 70809
225.766.0000 | sauragerotenberg.com

FOR SALE +/- 7.6 TOTAL ACRES WITH RIVER FRONTAGE

BAYOU STEEL RD. @ HWY 628, LAPLACE, LA 70068

+/- 7.6 ACRES



BILL JEANSONNE
Commercial Investment Specialist
225.802.2932
bill@sr-cre.com

SAURAGE ROTENBERG COMMERCIAL REAL ESTATE, LLC
5135 Bluebonnet Boulevard
Baton Rouge, LA 70809
225.766.0000 | sauragerotenberg.com

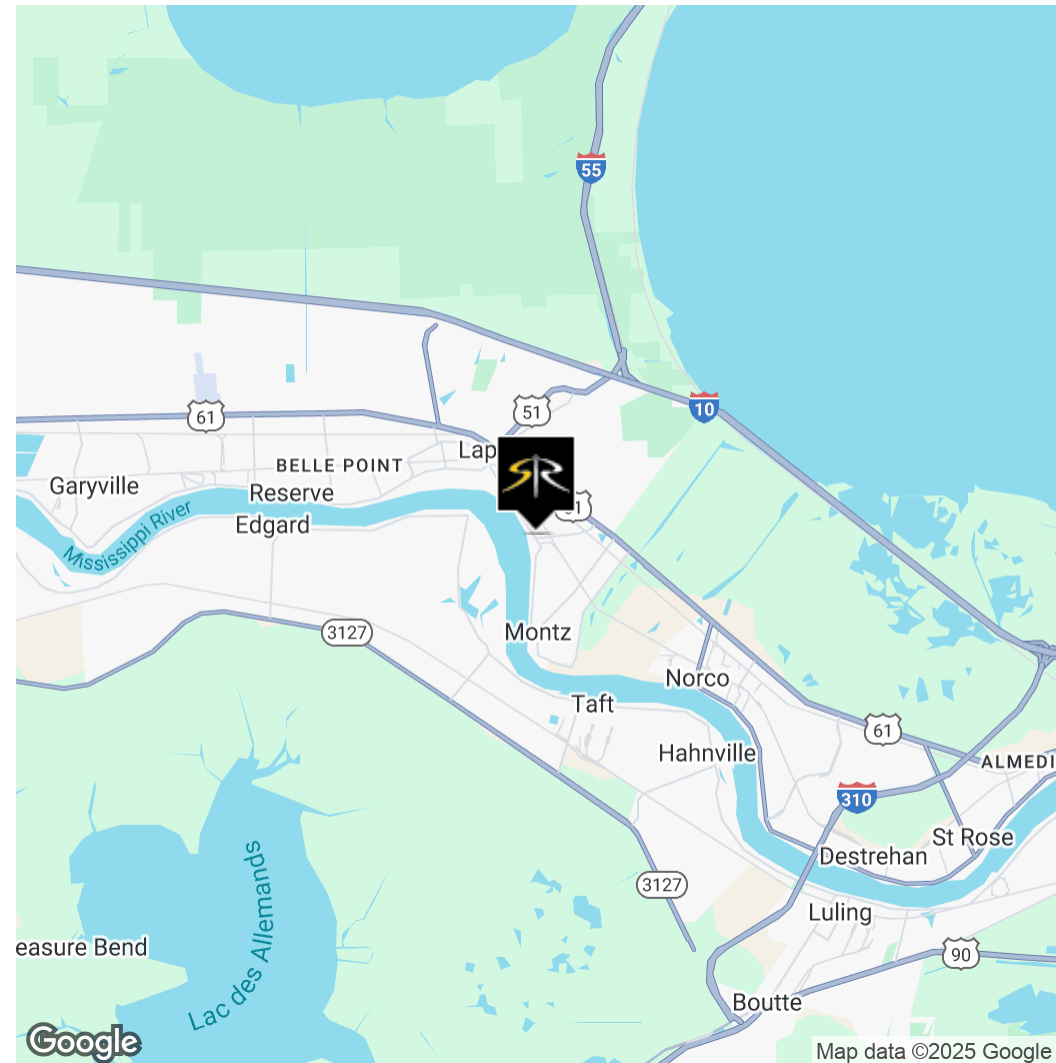
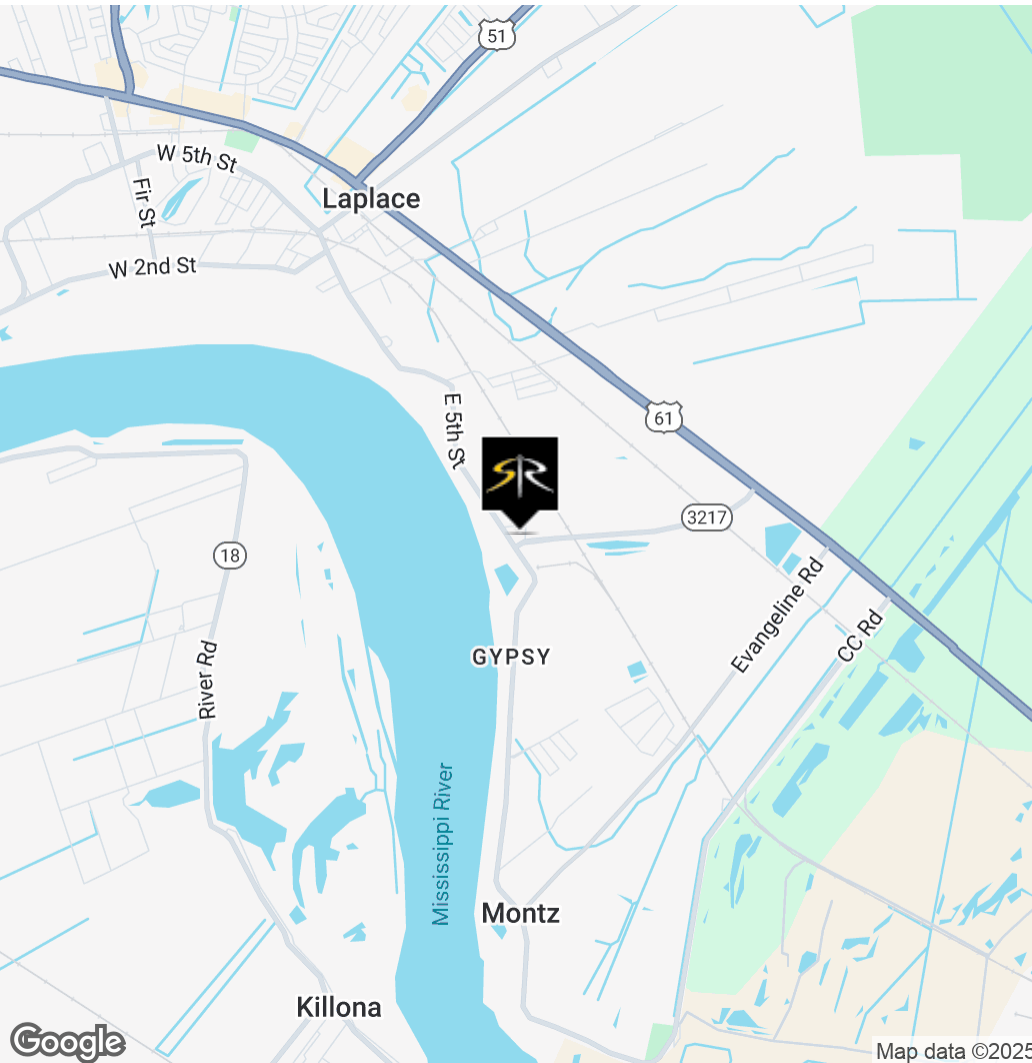


SAURAGE ROTENBERG™
COMMERCIAL REAL ESTATE

FOR SALE +/- 7.6 TOTAL ACRES WITH RIVER FRONTAGE

BAYOU STEEL RD. @ HWY 628, LAPLACE, LA 70068

+/- 7.6 ACRES



BILL JEANSONNE

Commercial Investment Specialist
225.802.2932
bill@sr-cre.com

SAURAGE ROTENBERG COMMERCIAL REAL ESTATE, LLC

5135 Bluebonnet Boulevard
Baton Rouge, LA 70809
225.766.0000 | sauragerotenberg.com

The information contained herein has either been given to us by property owners or is from sources deemed reliable and is believed to be correct, it is not in any way warranted or guaranteed by Saurage Rotenberg Commercial Real Estate. This information is submitted subject to errors, omissions, changes in price, rental or other conditions, withdrawal without notice, and to any special listing conditions imposed by the principals. Licensed in Louisiana & Mississippi.



SAURAGE ROTENBERG™
COMMERCIAL REAL ESTATE

+/- 7.6 TOTAL ACRES WITH RIVER FRONTAGE

BAYOU STEEL RD. @ HWY 628, LAPLACE, LA 70068

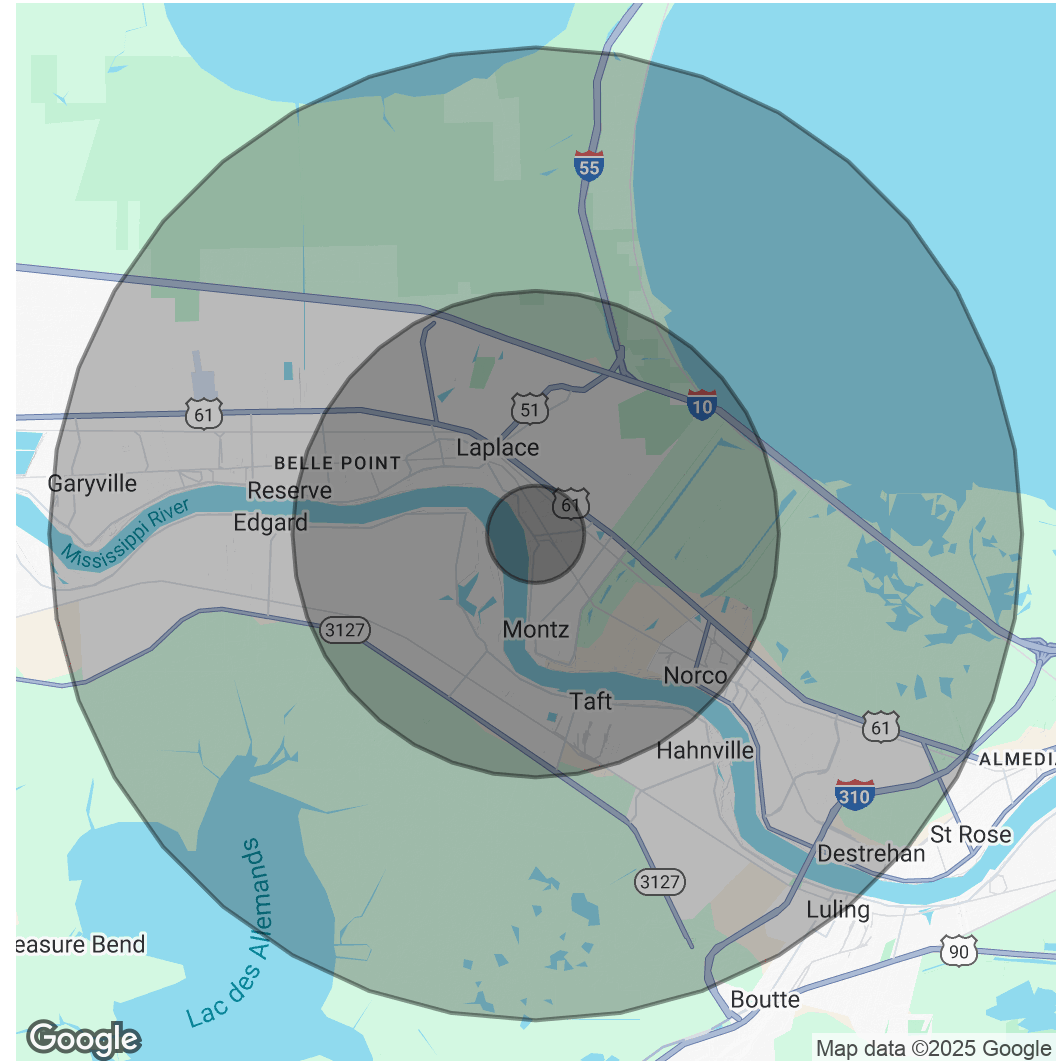
FOR SALE

+/- 7.6 ACRES

POPULATION	1 MILE	5 MILES	10 MILES
Total Population	1,103	36,790	59,477
Average Age	39	40	41
Average Age (Male)	39	39	40
Average Age (Female)	39	41	41

HOUSEHOLDS & INCOME	1 MILE	5 MILES	10 MILES
Total Households	430	13,610	22,318
# Of Persons Per HH	2.6	2.7	2.7
Average HH Income	\$114,019	\$99,146	\$103,193
Average House Value	\$269,106	\$242,604	\$261,804

Demographics data derived from AlphaMap



BILL JEANSONNE

Commercial Investment Specialist
225.802.2932
bill@sr-cre.com

SAURAGE ROTENBERG COMMERCIAL REAL ESTATE, LLC

5135 Bluebonnet Boulevard
Baton Rouge, LA 70809
225.766.0000 | sauragerotenberg.com

The information contained herein has either been given to us by property owners or is from sources deemed reliable and is believed to be correct, it is not in any way warranted or guaranteed by Saurage Rotenberg Commercial Real Estate. This information is submitted subject to errors, omissions, changes in price, rental or other conditions, withdrawal without notice, and to any special listing conditions imposed by the principals. Licensed in Louisiana & Mississippi.