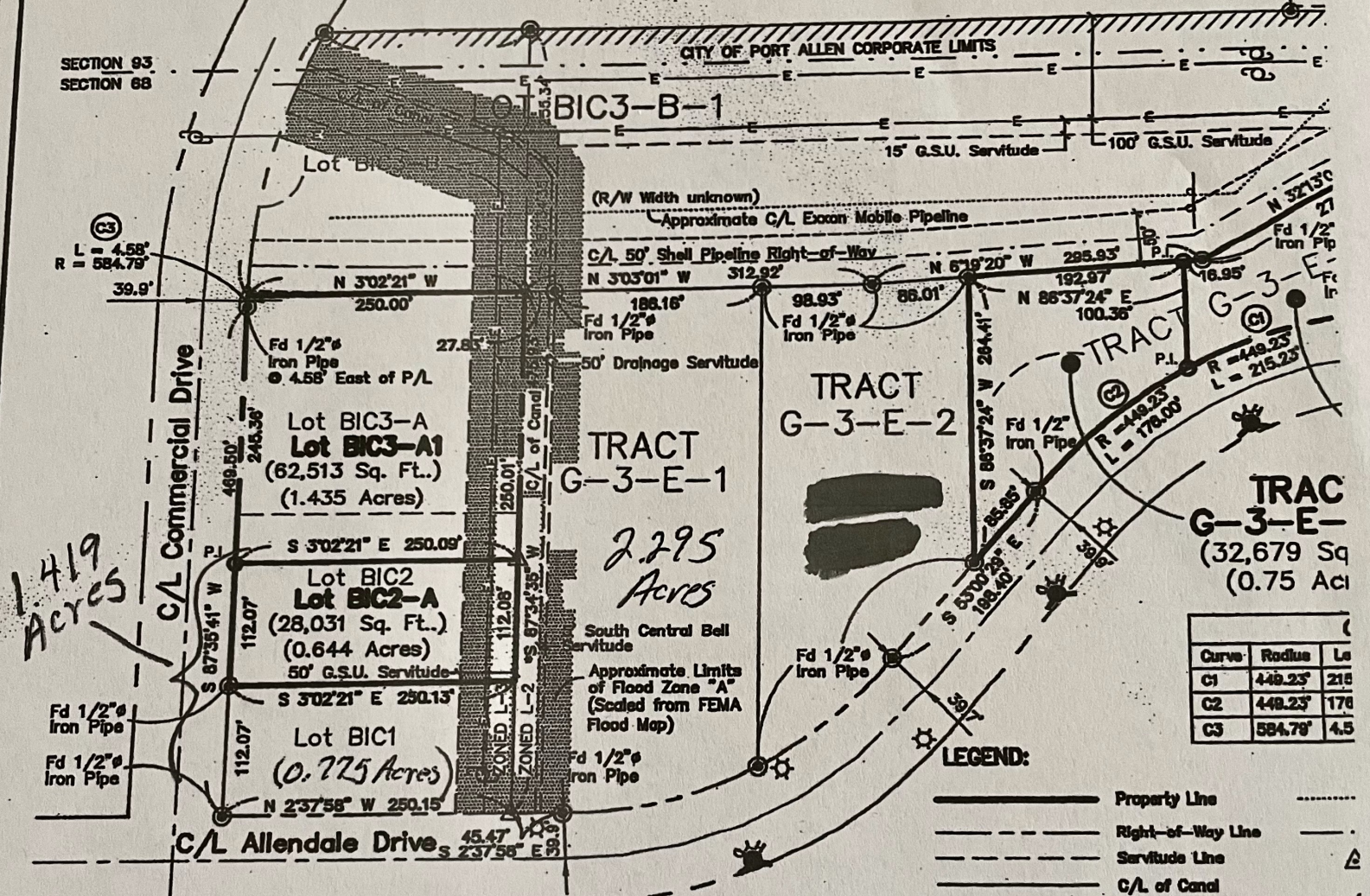


(Now or Formerly)
 Eighteen -44 Comm Dr LLC, ET.ALS.
 1844 Commercial Drive
 Port Allen, LA 70767

SECTION 93
 SECTION 88

CITY OF PORT ALLEN CORPORATE LIMITS



1.419 Acres

2.295 Acres

Subdivision Notes:
 No person shall provide a method of sewage disposal, except connection to an approved sanitary sewer system, until the method of sewage treatment and disposal has been approved by the Health Unit of West Baton Rouge Parish & the City of Port Allen Sanitation Department.

Barker Investments Co., LLC
 Lots BIC2-A & BIC3-A1

Date

GENERAL NOTES:

- 1) This survey conforms to current standards of practice as defined in Subpart #2505, Title 46, Chapter 25 of Professional & Occupational Standards for Professional Engineers and Land Surveyors for a Class "C" Range.
- 2) Bearings are based on Reference Map No. 1. Distances are based on U.S. Survey Feet.
- 3) Utility locations were not within the scope of this survey.
- 4) No attempt has been made by Patin Engineers & Surveyors, Inc. to verify title, actual legal ownership, servitudes, easements, right-of-ways or other burdens on the property.

Subdivision Notes:

No person shall provide a method of sewage disposal, except connection to an approved sanitary sewer system, until the method of sewage treatment and disposal has been approved by the Health Unit of West Baton Rouge Parish & the City of Port Allen Sanitation Department.

CERT

At the investr
 Resubc
 into Ti
 of Lot
 BIC2A
 Range
 River,
 Louisia
 Statut
 govern