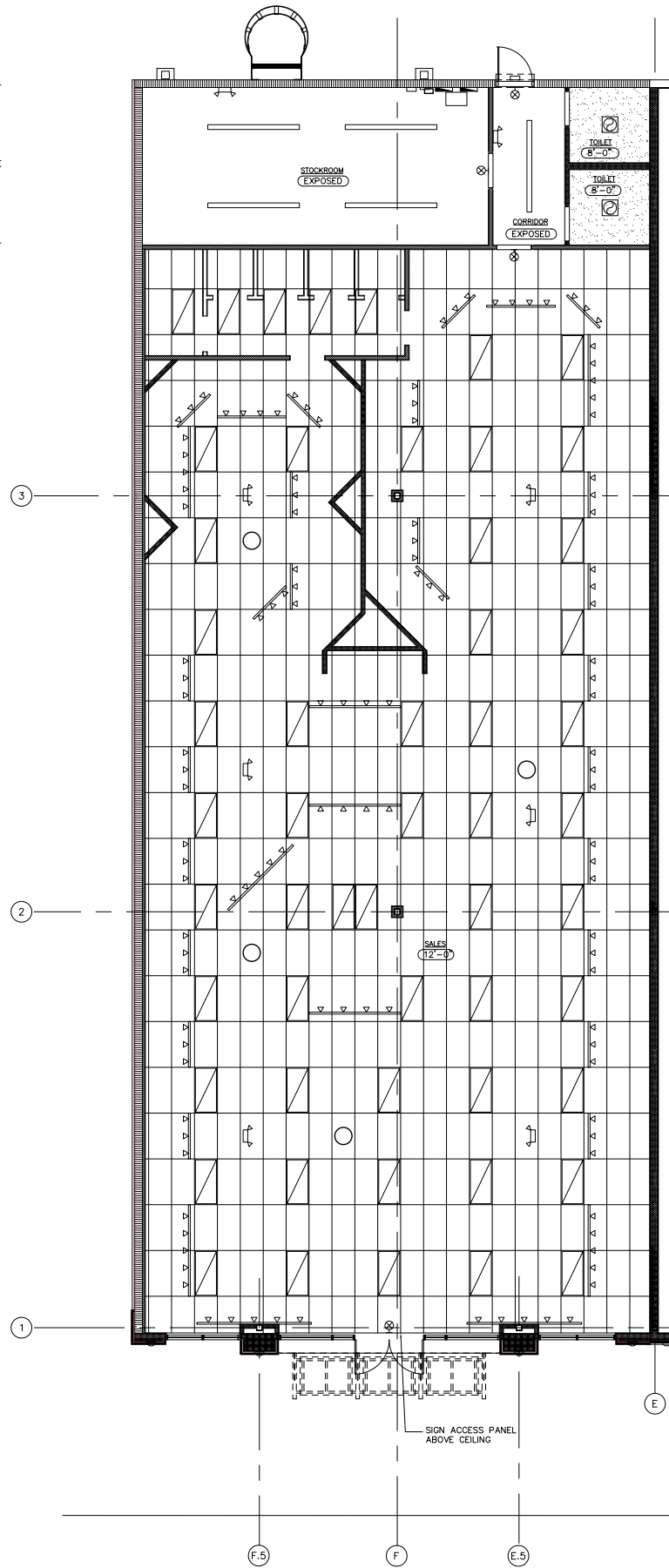


1 FLOOR PLAN - RUE 21  
SCALE: 1/8" = 1'-0"



2 REFLECTED CEILING PLAN - RUE 21  
SCALE: 1/8" = 1'-0"

- INTERIOR PARTITION SCHEDULE:
- (1) HOUR RATED WALL, UL U465, 6" METAL STUDS @ 16" O.C. WITH 5/8" TYPE "X" GYPSUM BOARD EACH SIDE FROM FLOOR TO ROOF DECK. FIRE CAULK ALL PENETRATIONS. USE MR. GYPSUM BOARD AT RESTROOM LOCATIONS.
  - (2) HOUR WALL, UL U906, 8" CMU WALL WITH 5/8" GYPSUM BOARD ON 2 1/2" FURRING CHANNELS @ 16" O.C. TO 6" ABOVE CEILING GRID.
  - (2) HOUR WALL, UL U906, 8" CMU WALL.
  - 3 5/8" METAL STUDS @ 16" O.C. FROM FLOOR TO ROOF DECK WITH 5/8" GYPSUM BOARD EACH SIDE FROM TAPED, FLOATED, SANDED, READY FOR TENANT FINISHES. USE MR. GYPSUM BOARD AT RESTROOM LOCATIONS.
  - 3 5/8" METAL STUDS @ 16" O.C. WITH 5/8" GYPSUM BOARD EACH SIDE, FROM FLOOR TO 8'-0" A.F.F. TAPED, FLOATED, SANDED, READY FOR TENANT FINISHES. USE MR. GYPSUM BOARD AT RESTROOM LOCATIONS.
  - 3 5/8" METAL STUDS @ 16" O.C. FROM FLOOR TO CEILING GRID WITH 5/8" GYPSUM BOARD EXPOSED SIDE, TAPED, FLOATED, SANDED READY FOR TENANT FINISHES.
  - 6" METAL STUDS @ 16" O.C. PLUMBING CHASE WITH 5/8" MR. GYPSUM BOARD ON EXPOSED SIDE FROM FLOOR TO CEILING.
  - 2 1/2" METAL STUD FURR OUT AROUND STRUCTURAL COLUMNS. 5/8" GYPSUM BOARD ON EXPOSED SIDE FROM FLOOR TO 6" ABOVE CEILING GRID. TAPED, FLOATED, SANDED, READY FOR TENANT FINISHES.
- NOTE:  
REFER TO FINISH SCHEDULE FOR WALL FINISHES.

DOOR SCHEDULE		DESCRIPTION	FRAME	HARDWARE	REMARKS
1	PAIR 3'-0" X 7'-0" X 1 3/4"	ALUMINUM STOREFRONT MEDIUM STILE	ALUMINUM	1	
2	3'-0" X 7'-0" X 1 3/4"	INSULATED HOLLOW METAL GALV. PAINTED	HOLLOW METAL GALV. PAINTED	2	CONTRACTOR TO PROVIDE RAIN HOOD ABOVE DOOR
3	3'-0" X 6'-8" X 1 3/4"	SOLID CORE WOOD PAINT GRADE	HOLLOW METAL GALV. PAINTED	3	
4	3'-6" X 7'-0" X 1 3/4"	HOLLOW METAL PAINTED	HOLLOW METAL GALV. PAINTED	4	

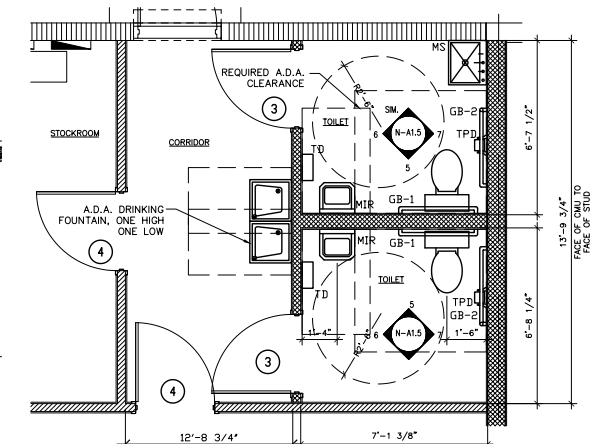
HARDWARE LEGEND		REMARKS
HW1	ALUMINUM STOREFRONT, MANUFACTURERS STANDARD, TOP & BOTTOM PIVOT, LCN CLOSER 4041-H-DUSH, CYLINDER LOCK WITH THUMB TURN ON INTERIOR, WEATHER STRIPPING, THRESHOLD PEMKO #309AP, PUSH PULL. (2) EA. KICKSTAND DOOR STOPS ROCKWOOD #460.	HW3 1-1/2" PAIR BUTTS HAGER 800 4 1/2x4 1/2, SATIN STAINLESS STEEL 32D; KICK PLATE, HAGER 30, SATIN STAINLESS STEEL 32D; PRIVACY LOCK SCHLAGE AL40S SATIN CHROMIUM PLATED 626, CLOSER LCN 1461-H-AL
HW2	1-1/2" PAIR BUTTS HAGER BB1279NP US26D 4 1/2x4 1/2, COVER PLATE/BLANK ON EXTERIOR, THRESHOLD PEMKO #200S AP, WEATHER STRIPPING NATIONAL GUARD FLEX STRIP #4, LOCK GUARD IVES #184 FP, CRASH STOP IVES #115826D-25, BOTTOM SWEEP PEMKO #309AP, DOOR VIEWER EYE PIECE IVES 700 R26D, KICK PLATE ROCKWOOD 24x30" US32D, KICK-DOWN DOOR HOLDER HAGER 270C SI-SPRAYED ALUMINUM, CLOSER LCN 1460-H-AL, PANIC BAR DORMA #8300-01 OR EQ. SATIN STAINLESS STEEL 32D. PRYGUARD, DOOR BUZZER NUTONE LA20.	HW4 1 1/2" PAIR BUTT HINGES, HAGER BB1191 5X5, SATIN STAINLESS STEEL 32D; PUSH PLATE ROCKWOOD 700L (44x16") US32D; KICK PLATE ROCKWOOD 24x30" US32D; BUMPERS CIPCO 83/P; CLOSER LCN 1460-H-AL; DOOR STOP ROCKWOOD 517-US32D STOCK ROOM LOCK SET AL80PD.
NOTE: ALL CLOSURES TO HAVE HOLD OPENS.		

ROOM FINISH SCHEDULE		CEILING	CLG. HT.	REMARKS
RUE 21 SALES AND DRESSING ROOM AREAS	FINISH CONCRETE, READY FOR TENANT FINISHES	2'x4' ACOUSTICAL TILE, ARMSTRONG WORLD IND., INC. #1733, 24"x48", REGULAR EDGE LAY-IN PANEL WITH WHITE FINISH (OR EQUAL), GRID TO BE: ARMSTRONG IND., INC. PRELUDE XL 7300SYSTEM HOT-DIPPED GALVANIZED, DOUBLE WEBBED STEEL, COLOR IS WHITE (OR EQUAL).	12'-0"	
RUE 21 STOCK ROOM	FINISH CONCRETE, READY FOR TENANT FINISHES	OPEN TO STRUCTURE ABOVE	VARIES	
RUE 21 TOILETS	VINYL FLOOR TILE (VCT) ARMSTRONG IMPERIAL TEXTURE 5196 DUTCH DELFT	GYPSUM BOARD, TAPED, FLOATED, SANDED, READY FOR TENANT FINISHES.	8'-0"	JOHNSONITE #960 ADHESIVE OR EQ. ON POROUS SURFACE, #945 OR EQ. ON NON-POROUS SURFACES

REFLECTED CEILING PLAN LEGEND		8' STRIP FLOUORESCENT FIXTURES
2x4 LAY-IN LIGHT FLOURESCENT; REFER TO ELECTRICAL DOCUMENTS	EXIT SIGN	
2x4 LAY-IN CEILING; REFER TO FINISH SCHEDULE	EMERGENCY LIGHT	SECURITY CAMERA DOME SUPPLIED BY TENANT INSTALLED BY LANDLORD'S G.C.; REFER TO TENANT DOCUMENTS. INSTALL IN CEILING TILE.
PAINTED GYPSUM BOARD	EXTERIOR WALL MOUNTED FIXTURE	SURFACE MOUNTED SCONCE SUPPLIED BY TENANT INSTALLED BY LANDLORD'S G.C.; REFER TO TENANT DOCUMENTS
TRACK LIGHT FIXTURE; PROVIDE BY TENANT INSTALLED BY LANDLORD'S G.C.; REFER TO TENANT DOCUMENTS	COMBINATION LIGHT AND EXHAUST FAN, COLOR WHITE TRIM, SPECULAR REFLECTOR	NOTE: CENTER ALL SPRINKLER HEADS IN CEILING TILE COORDINATE SPRINKLER HEAD LOCATIONS WITH TENANT DRAWINGS. VERIFY LIGHTING LAY-OUT WITH TENANT DOCUMENTS.

TOILET ACCESSORIES SCHEDULE		MODEL	REMARKS
GB-1	36" GRAB BAR	BRADLEY #812-003-36-2	
GB-2	48" GRAB BAR	BRADLEY #812-003-48-2	
TPD	TOILET PAPER DISPENSER	BRADLEY #508-32	
MIR	MIRROR	BRADLEY #780-2436	
TD	PAPER TOWEL DISPENSER	BRADLEY #2491	
MS	MOP SINK	FIAT MS82424	WITH MOP FAUCET AND HANGERS

NOTES:  
1. CONTRACTOR TO PROVIDE ALL BLOCKING FOR ALL TOILET ACCESSORIES INCLUDING ACCESSORIES UNDER SEPARATE CONTRACT. COORDINATE WITH TENANT INTERIOR FINISH DRAWINGS.  
2. ALL TOILET ACCESSORIES SHALL BE INSTALLED PER ADAG.



3 TOILET ROOM  
SCALE: 3/8" = 1'-0"

PROPOSED STIRLING LAFAYETTE - TRACT N  
RUE 21  
SHOPPING CENTER DEVELOPMENT  
INTERSTATE 10 @ LOUISIANA AVENUE  
LAFAYETTE, LOUISIANA

STIRLING PROPERTIES  
White a Connection  
OWNER/DEVELOPER

ZITO-RUSSELL ARCHITECTS, P.C.  
820 S. UNIVERSITY BLVD., SUITE 20 MOBILE, AL 36609  
PHONE (205) 343-0761 FAX (205) 343-5555

© COPYRIGHT 2008  
ZITO-RUSSELL ARCHITECTS, P.C.  
REVISIONS  
STATE OF LOUISIANA  
STEPHEN L. ZITO  
Reg. No. 3333  
REGISTERED ARCHITECT  
FILE 2937  
DATE MARCH 14, 2008  
SHEET  
N-A1.4