

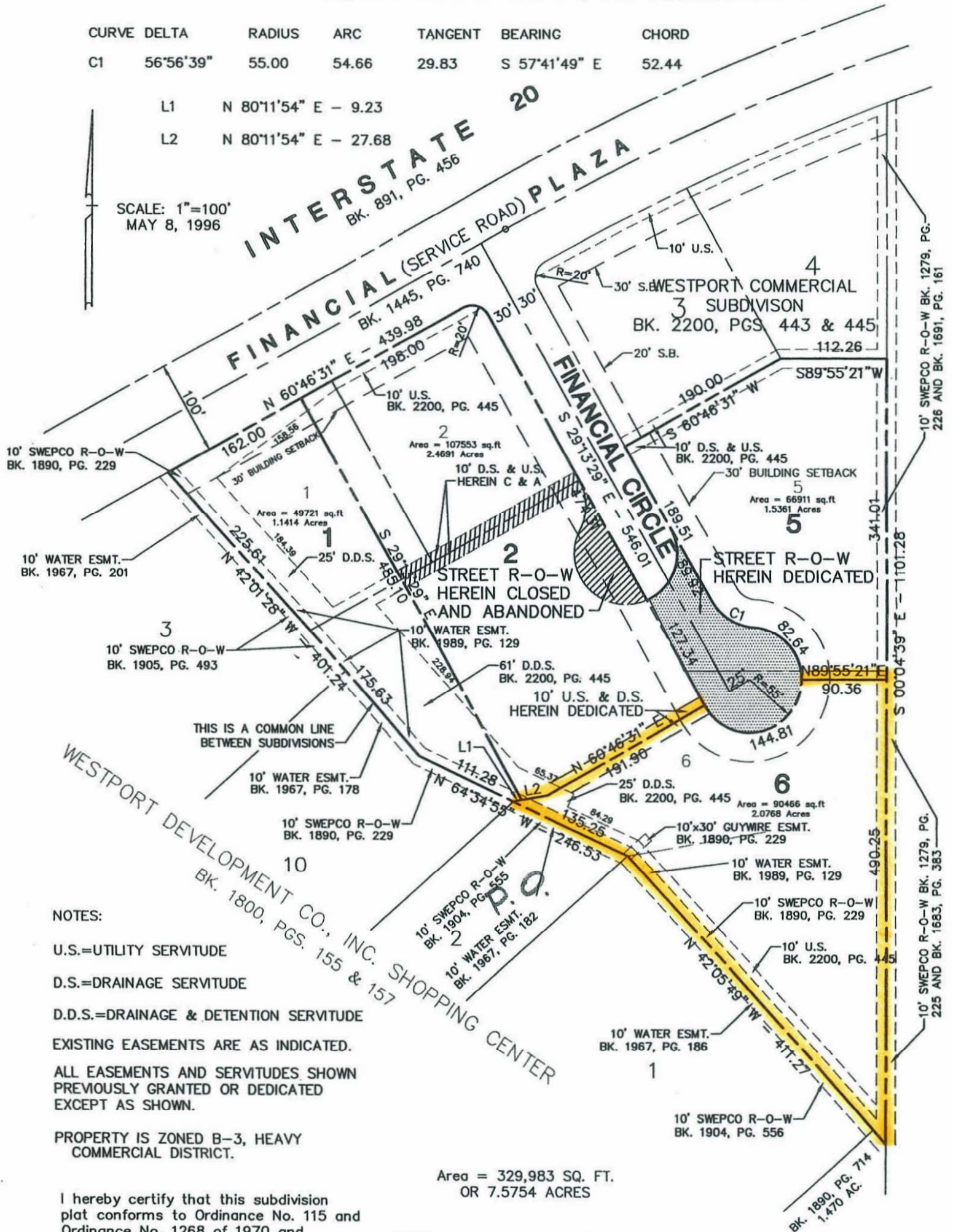
WESTPORT COMMERCIAL SUBDIVISION UNIT NO. 2

BEING A RESUBDIVISION OF LOTS 1, 2, 5, & 6 AND A PORTION OF CLOSED AND ABANDONED FINANCIAL CIRCLE OF WESTPORT COMMERCIAL SUBDIVISION AS RECORDED IN BOOK 2200, PAGES 443-445 OF THE RECORDS OF CADDO PARISH, LOUISIANA, AND LOCATED IN THE WEST HALF OF SECTION 24, T17N-R15W, SHREVEPORT, CADDO PARISH, LOUISIANA

CURVE	DELTA	RADIUS	ARC	TANGENT	BEARING	CHORD
C1	56°56'39"	55.00	54.66	29.83	S 57°41'49" E	52.44

L1 N 80°11'54" E - 9.23
L2 N 80°11'54" E - 27.68

SCALE: 1"=100'
MAY 8, 1996



NOTES:

U.S.=UTILITY SERVITUDE

D.S.=DRAINAGE SERVITUDE

D.D.S.=DRAINAGE & DETENTION SERVITUDE

EXISTING EASEMENTS ARE AS INDICATED.

ALL EASEMENTS AND SERVITUDES SHOWN PREVIOUSLY GRANTED OR DEDICATED EXCEPT AS SHOWN.

PROPERTY IS ZONED B-3, HEAVY COMMERCIAL DISTRICT.

Area = 329,983 SQ. FT.
OR 7.5754 ACRES

I hereby certify that this subdivision plat conforms to Ordinance No. 115 and Ordinance No. 1268 of 1970 and amendments thereto.

NOTES: Iron pipes set at all corners.

Tract is located in zone "X" per F.I.R.M. panel No. 220036 0009C effective date April 17, 1995.

James D. Mohr
Professional Land Surveyor
I.C. No. 2714