

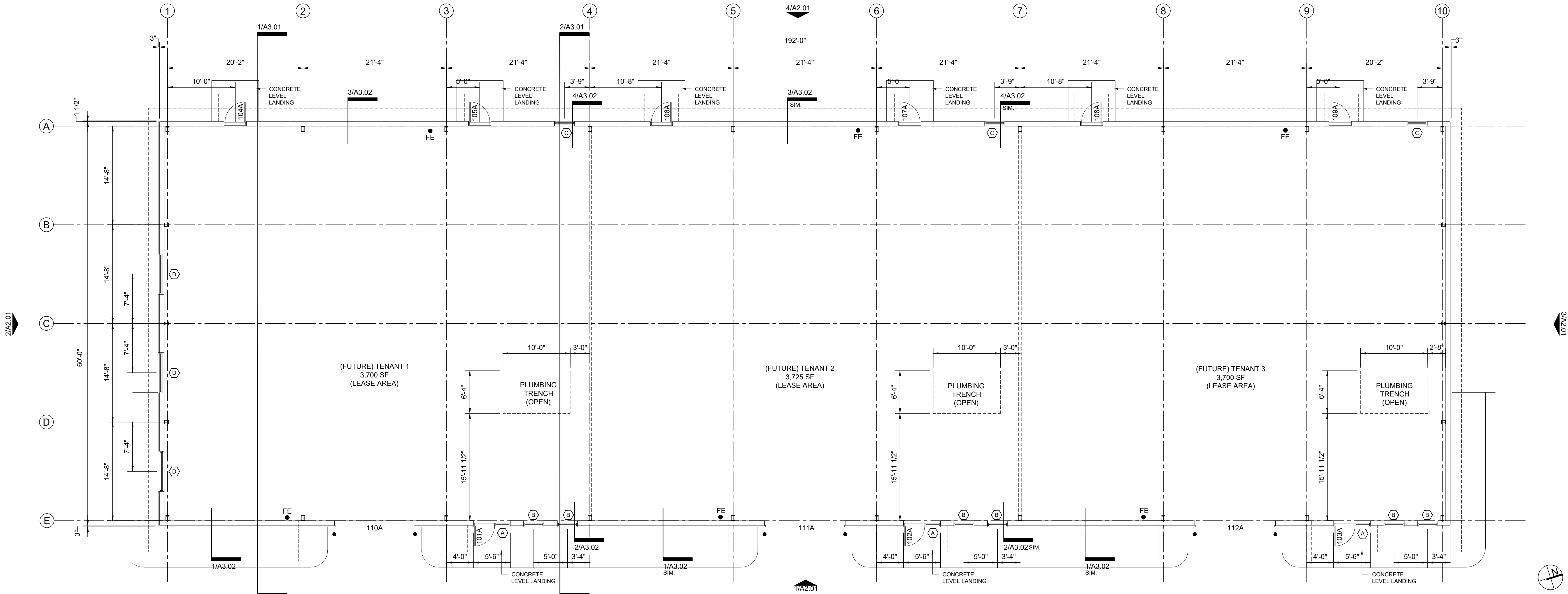
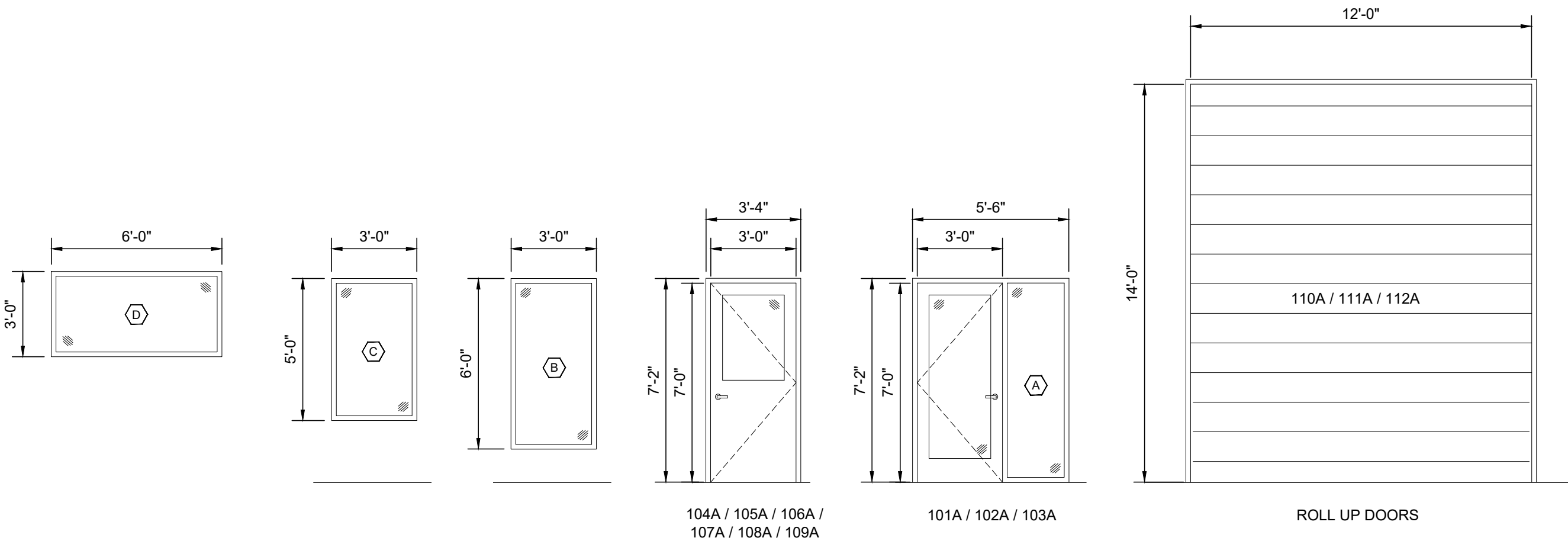
AREA INCREASE:

1. Tabular per floor area limit per Chapter 5 = 9,000 sq.ft. (Non-Sprinkler)
2. Allow height = 40 ft; allow stories = 1
Group R and NFPA 13R? No
NFPA 13 sprinklers? No
I-2 with Type IIB, III, IV, or V? No
H1, H2, H3, or H5? No
3. Compute area increase due to frontage: frontage coefficient, $I_f = 0.33$
perimeter, $P = 506$ ft
'frontage' perimeter, $F = 313$ ft
4. Compute allowable per story area, $A_a = A_t + (NS \times I_f) = 11,970$ sq.ft.
5. Maximum allowable area = $A_a \times 1 = 11,970$ sq.ft.
6. The revised allowable height is 40 ft.

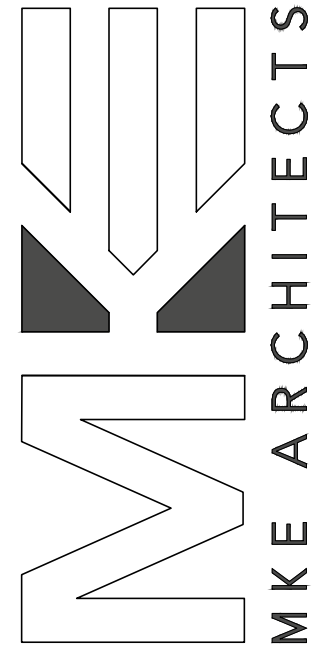
1/4"=1'-0" (2)

COMPLY WITH ALL CURRENT ADA
STANDARDS REQUIRED BY FEDERAL
AND LOCAL CODES

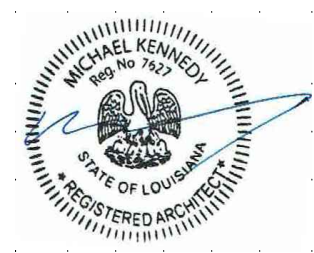
- ALUM. FRAME WITH THERMAL BREAK
- MAX-U-FACTOR = 0.32
- MAX SHGC = 0.25



1/8"=1'-0" (1)



Seal



Sheet Number:

A1.02