

## FOR LEASE

### PROPERTY SUMMARY

Village at Southpark shopping center is positioned to access the South Lafayette market. It is situated on two main traffic arteries: Pinhook Road (Hwy. 182 to Broussard) and Southpark Road (Hwy 89 to Youngsville). South Lafayette's expansion has been diverse, ranging from a growing industrial park to apartment settings, and to a major residential community. Spaces are available that can be used for office, retail, or office warehouse.

### AVAILABLE

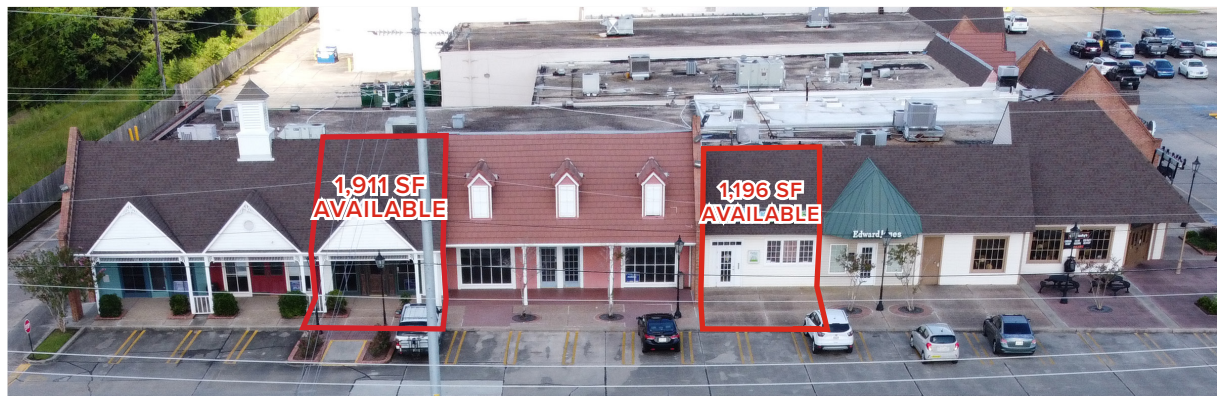
- Unit 104: 1,196 SF
- Unit 110: 1,911 SF
- Unit 3544: 2,000 SF
- Outparcel Opportunity

### TENANTS

- Southpark Storage
- Family Dollar
- Dyslexia Institutes of America
- AT&T
- Edward Jones
- Harbor Loans
- Schlotzky's
- Mckay Nails and Spa
- Cajun Gun and Gear
- Little Hacienda

### 2025 DEMOGRAPHICS

	1 MI	3 MI	5 MI
Population	4,845	38,818	112,223
Avg. HH Income	\$102,882	\$125,044	\$118,711
Households	2,068	16,905	47,362



# THE VILLAGE AT SOUTHPARK

Click image for larger view

