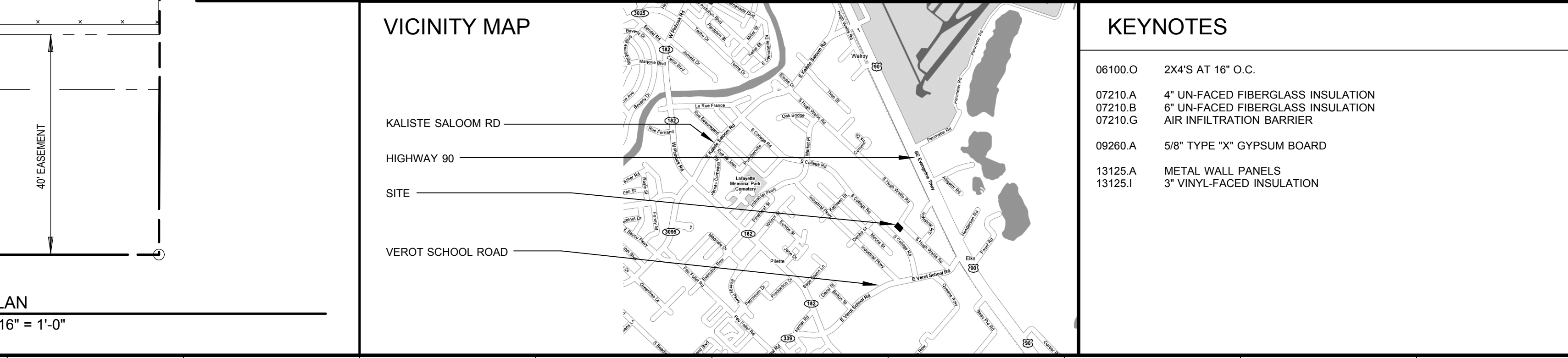
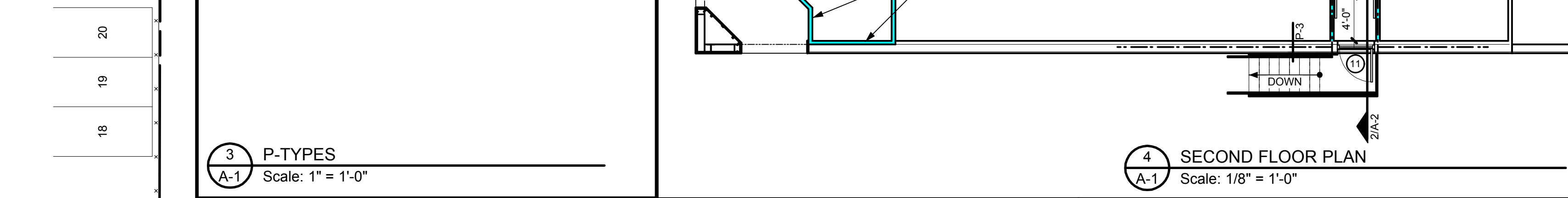
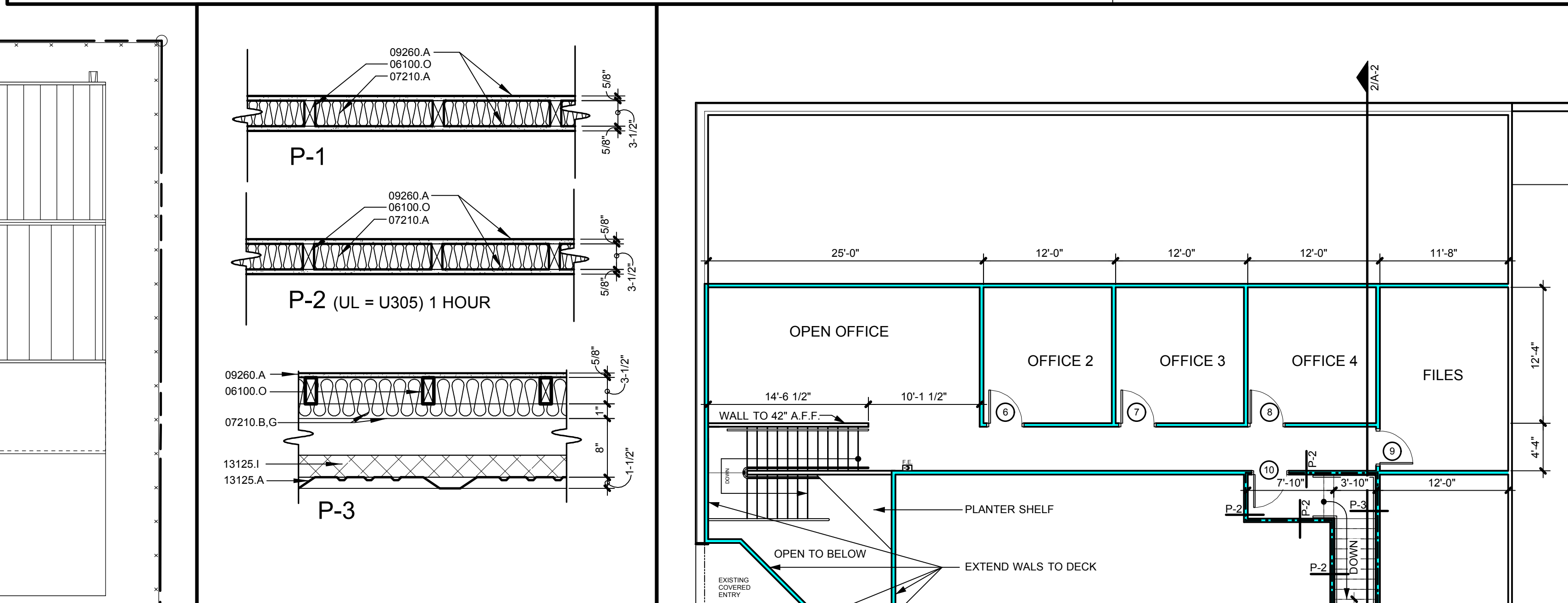


MARK	SIZE	DESCRIPTION
1	PAIR OF 3'-0" x 7'-0" x 1-3/4"	EXISTING PAIR OF STOREFRONT DOORS IN STOREFRONT FRAME
2	3'-0" x 7'-0" x 1-3/4"	EXISTING INTERIOR SOLID CORE WOOD DOOR IN HOLLOW METAL FRAME
3	3'-0" x 7'-0" x 1-3/4"	EXISTING INTERIOR SOLID CORE WOOD DOOR IN HOLLOW METAL FRAME
4	3'-0" x 7'-0" x 1-3/4"	EXISTING INTERIOR SOLID CORE WOOD DOOR IN HOLLOW METAL FRAME
5	3'-0" x 7'-0" x 1-3/4"	NEW INTERIOR SOLID CORE WOOD DOOR IN HOLLOW METAL FRAME (60-MINUTE)
6	3'-0" x 7'-0" x 1-3/4"	NEW INTERIOR SOLID CORE WOOD DOOR IN HOLLOW METAL FRAME
7	3'-0" x 7'-0" x 1-3/4"	NEW INTERIOR SOLID CORE WOOD DOOR IN HOLLOW METAL FRAME
8	3'-0" x 7'-0" x 1-3/4"	NEW INTERIOR SOLID CORE WOOD DOOR IN HOLLOW METAL FRAME
9	3'-0" x 7'-0" x 1-3/4"	NEW INTERIOR SOLID CORE WOOD DOOR IN HOLLOW METAL FRAME
10	3'-0" x 7'-0" x 1-3/4"	NEW EXTERIOR HOLLOW METAL DOOR IN HOLLOW METAL FRAME (60-MINUTE)
11	3'-0" x 7'-0" x 1-3/4"	NEW EXTERIOR HOLLOW METAL DOOR IN HOLLOW METAL FRAME (60-MINUTE)
12	5'-0" x 7'-0" x 1-3/4"	NEW INTERIOR CASED OPENING IN HOLLOW METAL FRAME
13	3'-0" x 7'-0" x 1-3/4"	NEW INTERIOR SOLID CORE WOOD DOOR IN HOLLOW METAL FRAME (60-MINUTE)
A	3'-0 X 3'-0"	1/4" WIRE GLASS IN HOLLOW METAL FRAME (45-MINUTE)

ROOM NAME	FLOOR	BASE	WALL	CEILING	CLG. HT.
LOBBY	CERAMIC TILE	RUBBER	PAINTED GYPSUM BOARD	SUSPENDED ACCOUSTICAL TILE	9'-0"
CORRIDOR 1	V.C.T.	RUBBER	PAINTED GYPSUM BOARD	SUSPENDED ACCOUSTICAL TILE	9'-0"
STEVE'S OFFICE	CARPET	RUBBER	PAINTED GYPSUM BOARD	SUSPENDED ACCOUSTICAL TILE	9'-0"
SERVER CLOSET	CARPET	RUBBER	PAINTED GYPSUM BOARD	SUSPENDED ACCOUSTICAL TILE	9'-0"
OFFICE 1	CARPET	RUBBER	PAINTED GYPSUM BOARD	SUSPENDED ACCOUSTICAL TILE	9'-0"
OFFICE 2	CARPET	RUBBER	PAINTED GYPSUM BOARD	SUSPENDED ACCOUSTICAL TILE	8'-0"
OFFICE 3	CARPET	RUBBER	PAINTED GYPSUM BOARD	SUSPENDED ACCOUSTICAL TILE	8'-0"
OFFICE 4	CARPET	RUBBER	PAINTED GYPSUM BOARD	SUSPENDED ACCOUSTICAL TILE	8'-0"
OPEN OFFICE	CARPET	RUBBER	PAINTED GYPSUM BOARD	SUSPENDED ACCOUSTICAL TILE	8'-0"
FILES	V.C.T.	RUBBER	PAINTED GYPSUM BOARD	SUSPENDED ACCOUSTICAL TILE	8'-0"
CORRIDOR 2	V.C.T.	RUBBER	PAINTED GYPSUM BOARD	SUSPENDED ACCOUSTICAL TILE	8'-0"



ALL BIDDERS SHALL VISIT SITE PRIOR TO BIDDING.

ALL CONSTRUCTION SHALL COMPLY WITH INTERNATIONAL BUILDING CODE, 2006 ED.

ALL CONSTRUCTION SHALL COMPLY WITH LIFE SAFETY CODE, 2006 ED.

THE GENERAL CONTRACTOR SHALL FURNISH ALL FEES AND PERMITS NECESSARY FOR CONSTRUCTION.

VERIFY ALL DIMENSIONS

ALL NEW DOOR HARDWARE SHALL MEET A.D.A. REQUIREMENTS.

EXTERIOR DOORS SHALL OPEN ONTO A LANDING LEVEL WITH FINISHED FLOOR AND SHALL BE OPENABLE WITHOUT USE OF A KEY, TOOL OR SPECIAL EFFORT OR KNOWLEDGE.

ALL ELECTRICAL WORK SHALL COMPLY WITH INTERNATIONAL ELECTRIC CODE, LATEST EDITION.

ELECTRICIAN SHALL SUBMIT RISER TO INSPECTION DEPARTMENT PRIOR TO CONSTRUCTION

ALL WIRING SHALL RUN IN CONDUIT.

ALL PLUMBING SHALL COMPLY WITH INTERNATIONAL PLUMBING CODE WITH LOUISIANA REVISIONS; LATEST EDITION.

PLUMBER SHALL SUBMIT RISER TO INSPECTION DEPARTMENT PRIOR TO CONSTRUCTION. TIE-IN TO EXISTING PLUMBING

ALL HVAC WORK SHALL COMPLY WITH INTERNATIONAL MECHANICAL CODE, LATEST EDITION

HVAC SYSTEM SHALL BE CONSTRUCTED IN ACCORDANCE WITH, NFPA 101-9.2.

TELEPHONE WORK BY SEPARATE CONTRACTOR.

NEW PARTITIONS SHALL BE MINIMUM 3-1/2" NO 2 S.Y.P. WOOD STUDS @ 16" O.C. WITH 5/8" TYPE "X" GYPSUM ON EACH SIDE, TAPED AND FLOATED.

PENETRATIONS THROUGH RATED CONSTRUCTION SHALL BE SEALED WITH A MATERIAL CAPABLE OF PREVENTING THE PASSAGE OF FLAMES AND HOT GASES WHEN TESTED IN ACCORDANCE WITH ASTM-E814.

PROVIDE RUBBER BASE AT ALL NEW PARTITIONS.

ALL PARTITIONS AND TRIM SHALL RECEIVE 2 COATS OF LATEX PAINT, SEMI-GLOSS FINISH. PROVIDE PRIMER COAT AT UNFINISHED NEW WORK.

ALL DOORS AND DOOR TRIM SHALL RECEIVE 2 COATS OF LATEX PAINT, SEMI-GLOSS FINISH. PROVIDE PRIMER COAT.

INSULATION AND INSULATION ASSEMBLIES SHALL MEET THE REQUIREMENTS OF SECTION 718, INTERNATIONAL BUILDING CODE, 2000 EDITION.

A: COATED EGRESS INSULATION SHALL HAVE A FLAME SPREAD OF 0-25 AND A SMOKE DEVELOPED OF 0-450 IN ACCORDANCE WITH IBC 718

B: EXPOSED INSULATION SHALL HAVE A FLAME SPREAD OF 0-25 AND A SMOKE DEVELOPED OF 0-450 IN ACCORDANCE WITH IBC 718

PROVIDE ILLUMINATION OF MANS OF EGRESS IN ACCORDANCE WITH 5-8. (EXTERIOR LIGHTING)

THRESHOLDS SHALL BE NOT MORE THAN 1/2" HIGH AND BEVELED IF OVER 1/4".

PROVIDE CLOSERS AT ALL FIRE-RATED DOORS.

CONDEMN OR RELOCATE ALL ELECTRICAL, PHONE, AND CONTROL WIRING IN PARTITIONS OR OTHER AREAS TO BE DEMOLISHED. COORDINATE RELOCATION WITH NEW WORK.

PROVIDE PORTABLE FIRE EXTINGUISHERS IN ACCORDANCE WITH NFPA 10. SEE APPENDIX "E" OF NFPA 10 FOR DISTRIBUTION OF EXTINGUISHERS.

TOTAL AREA UNDER STORM - 8539 SQ.FT.
TOTAL ENCLOSED AREA - 7350 SQ.FT. (4560 OFFICE + 2700 WAREHOUSE)

EXISTING BUILDING
EXISTING AREA - 6200 SQ.FT.
NEW AREA - 1150 SQ.FT. (18% EXPANSION)
NUMBER OF STORIES - 2

IBC 2006:

CODE DATA

CONSTRUCTION TYPE IIB
PRIMARY OCCUPANCY CLASSIFICATION - B
SECONDARY OCCUPANCY CLASSIFICATION - F-2
MAXIMUM ALLOWED HEIGHT - 55 FT
MAXIMUM ALLOWED STORIES - 3
MAXIMUM AREA PER FLOOR - 15,500 SQ.FT.
OCCUPANT LOAD - 62
FIRE PROTECTION SYSTEM
SPRINKLERED - NO
IBC WIND DESIGN CRITERIA
WIND SPEED ZONE - 110 MPH
EXPOSURE - B
IMPORTANCE CRITERIA - II

NFPA 2006:

CODE DATA

PRIMARY OCCUPANCY CLASSIFICATION - BUSINESS
SECONDARY OCCUPANCY CLASSIFICATION - INDUSTRIAL
FIRE PROTECTION SYSTEM
SPRINKLERED - NO

ZONING

ZONING CLASSIFICATION = I-1
SETBACKS F = 20 FT S = 0 FT R = 0 FT
OPEN AREA REQUIREMENT
REQUIRED # OF TREES = 0 TREES - CLASS "A"
EXISTING TREES CREDIT = 10 % = 0 TREES - CLASS "A"
NEW TREES = 0 TREES - CLASS "A"
 SUB 2 "B" PER 1 "A" = 0 TREES - CLASS "B"
LANDSCAPING STRIP IS CONFLICTING WITH UTILITY EASMENT.

REQUIRED # OF PARKING = OFFICE AREA 4650/250 =19
 = WAREHOUSE 2700/500 = 6
TOTAL # OF REQUIRED PARKING SPACES = 25 SPACES
TOTAL # OF PROVIDED PARKING SPACES = 20 SPACES

SANITARY CODE

NET SQ.FT. = 3450 LOAD FACTOR = 1 PERSON / 100 SQUARE FEET
SQ.FT./LOAD FACTOR = 38 PERSONS
REQUIRED AND PROVIDED # FIXTURES
MEN = 1 WC 0 URINALS 1 LAVATORIES
WOMEN = 2 WC 2 LAVATORIES
DRINKING FOUNTAINS = 0 - WATER PROVIDED IN BREAK ROOM

No.	REVISIONS/SUBMISSIONS	Date



project: **SECOND FLOOR BUILD-OUT FOR:**
Howard & Associates International, Inc.
1416 Hugh Wallis Rd
Lafayette, LA 70508

Scale	AS NOTED	Project No.	0840
-------	-----------------	-------------	-------------

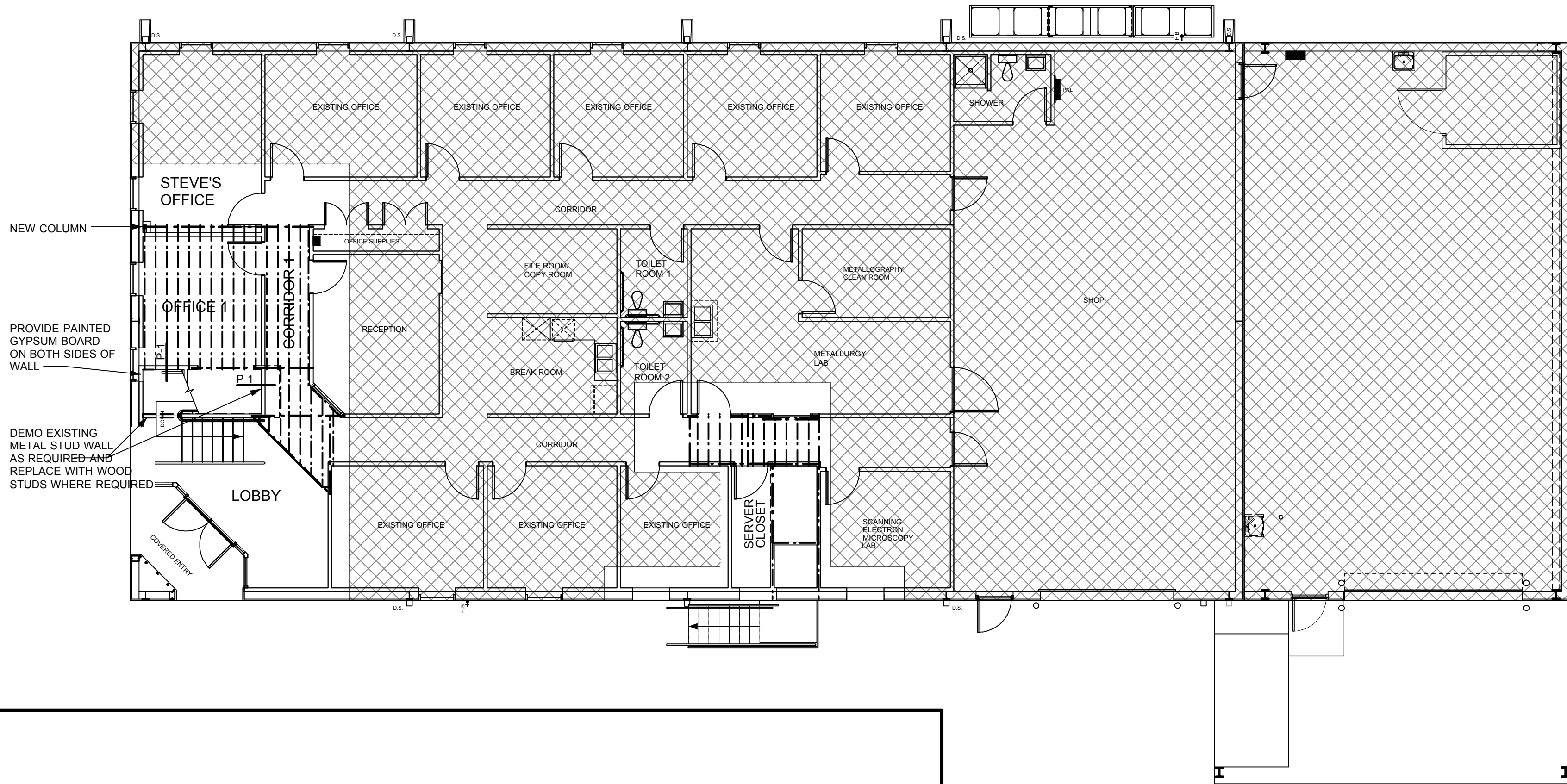
Scale	AS NOTED	Project No.	0840
-------	-----------------	-------------	-------------

	Sheet Number
--	--------------

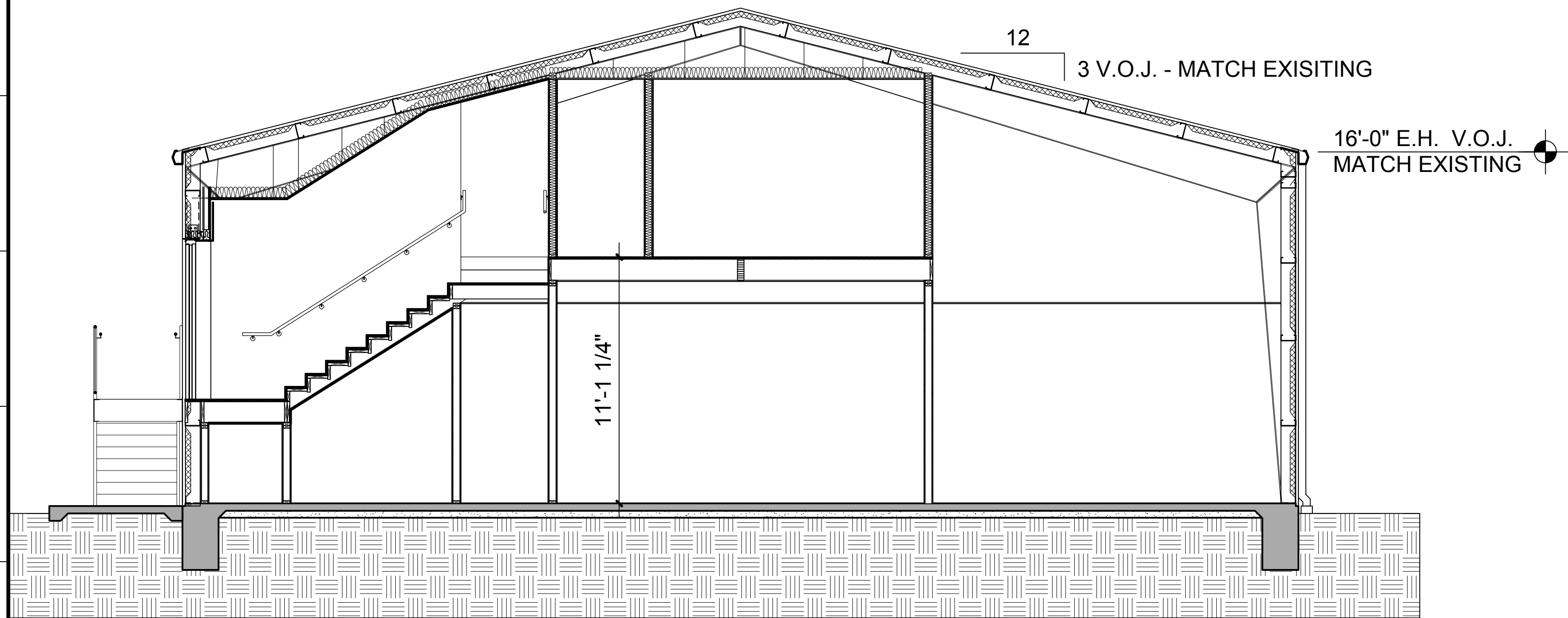
Sheet Number **A 1**

A-1

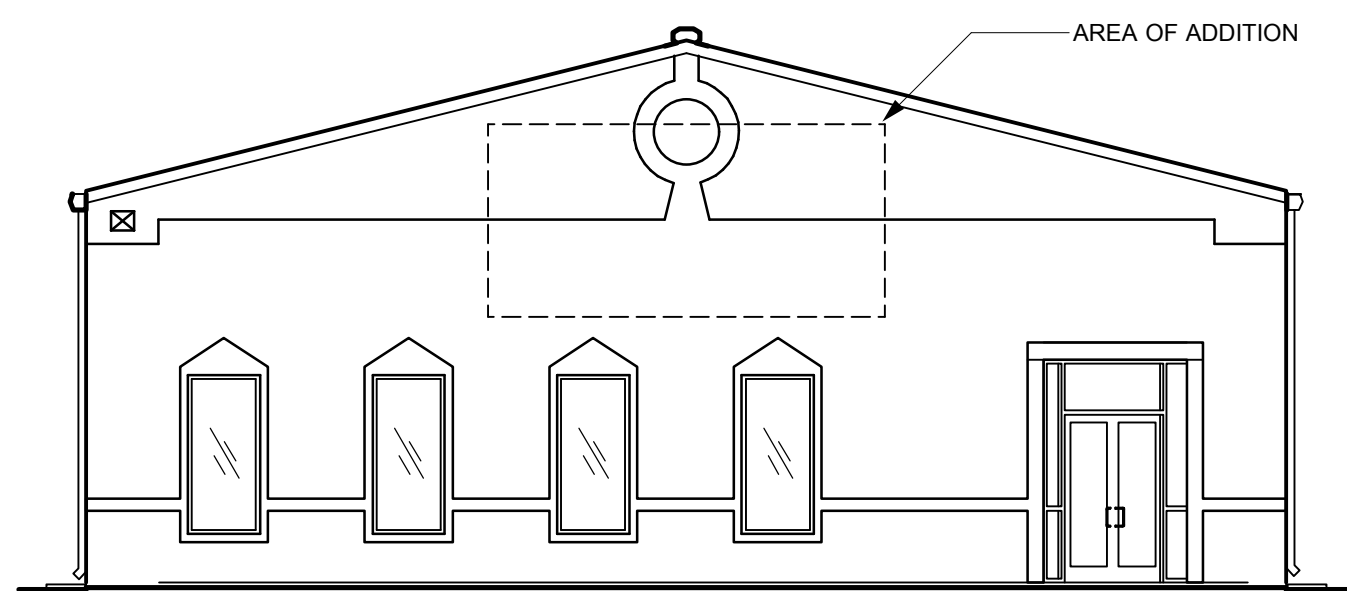
Date 7/25/08 OF



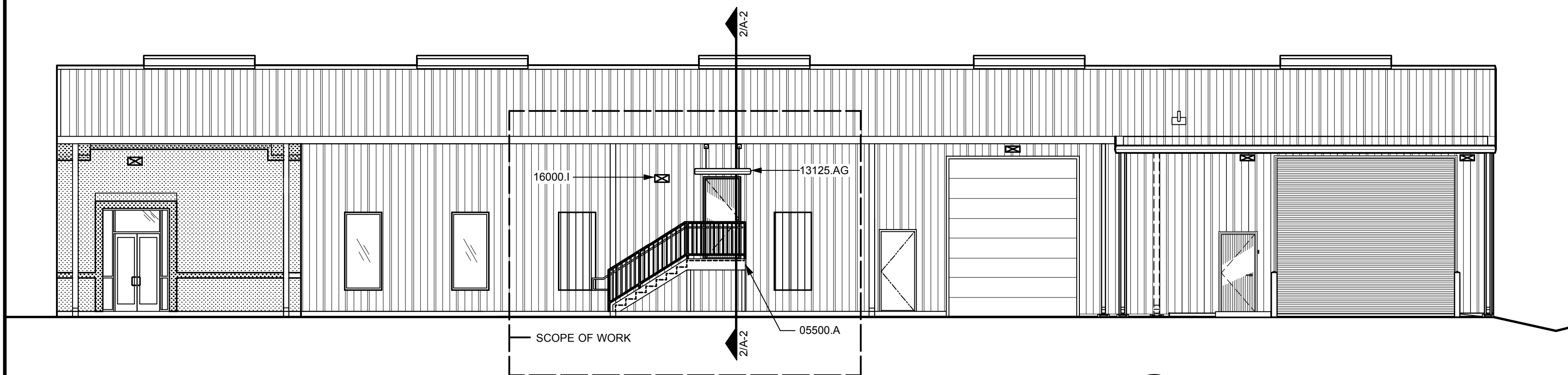
1 SECOND FLOOR FRAMING PLAN
Scale: 1/8" = 1'-0"



2 BUILDING SECTION
Scale: 1/4" = 1'-0"



3 FRONT ELEVATION
Scale: 1/8" = 1'-0"



4 RIGHT SIDE ELEVATION
Scale: 1/8" = 1'-0"

KEYNOTES

- 02300.A UNDISTURBED SOIL
02300.F 4" COMPACTED THICKNESS LIMESTONE
- 03300.A 3000 PSI CONCRETE
03300.B 6 MIL POLYETHYLENE VAPOR BARRIER (MINIMUM 6" TAPED LAPS; PATCH PENETRATIONS WITH ROOFING CEMENT)
03300.C 6"x 6" - W2.9 x W2.9 WELDED WIRE FABRIC AT CENTERLINE OF SLAB (6" LAPS W/ TIES AT 24" O.C.)
03300.D ROUGHEN CONCRETE (1/4 RIDGES MINIMUM) AND ADD 1-#5 CONTINUOUS AT COLD JOINT BETWEEN FOOTING AND SLAB POURS; CONTRACTOR'S OPTION TO BREAK POUR.
03300.G ASPHALT/FIBER EXPANSION JOINT W/ URETHANE SEALANT
03300.L #4 DOWELS AT 24" O.C. (BORE INTO EXISTING SLAB)
03300.N #5 RE-BARS AT 6" O.C. EACH WAY.
03300.BH 6 - #5 RE-BARS CONTINUOUS W/ #3 STIRRUPS AT 24" O.C.
- 05500.A STEEL STAIR
05500.BF 6" DIAMETER STEEL PIPE FILLED WITH CONCRETE AND PAINTED
- 08111.A HOLLOW METAL DOOR
- 08331.A OVERHEAD COILING DOOR
- 13125.A METAL WALL PANELS
13125.B METAL ROOF PANELS
13125.E DOWNSPOUT/SPLASHBLOCK
13125.AG METAL BUILDING AWNING
13125.AQ ROOF VENT
- 16000.1 WALL PACK LIGHT FIXTURE (SEE ELECTRICAL SPECS)

No.	REVISIONS/SUBMISSIONS	Date
-----	-----------------------	------

Drawings Prepared By

David Courville
ARCHITECT

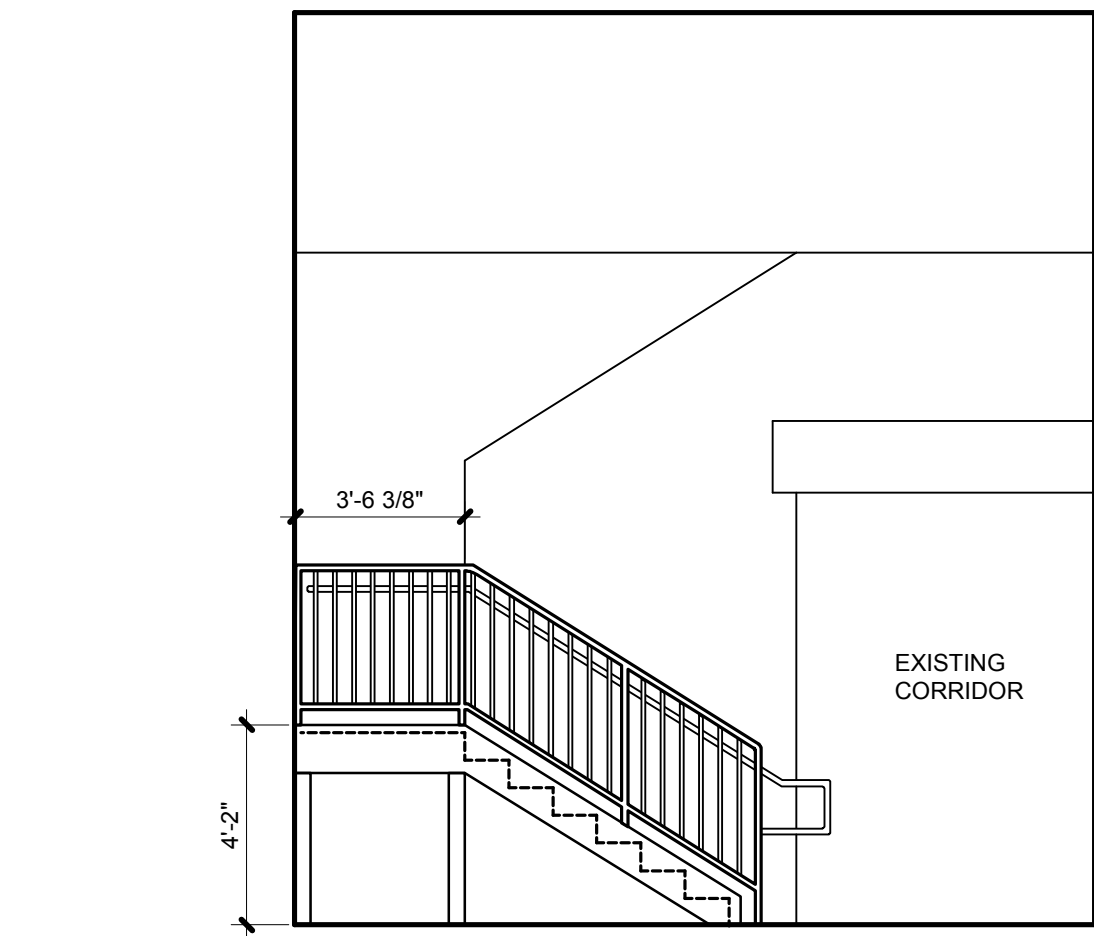
200 Jefferson St. Lafayette, LA 70501
phone: (337) 234-4166 • fax: (337) 234-7411 • dcarch@bellsouth.net

Project: **SECOND FLOOR BUILD-OUT FOR:**

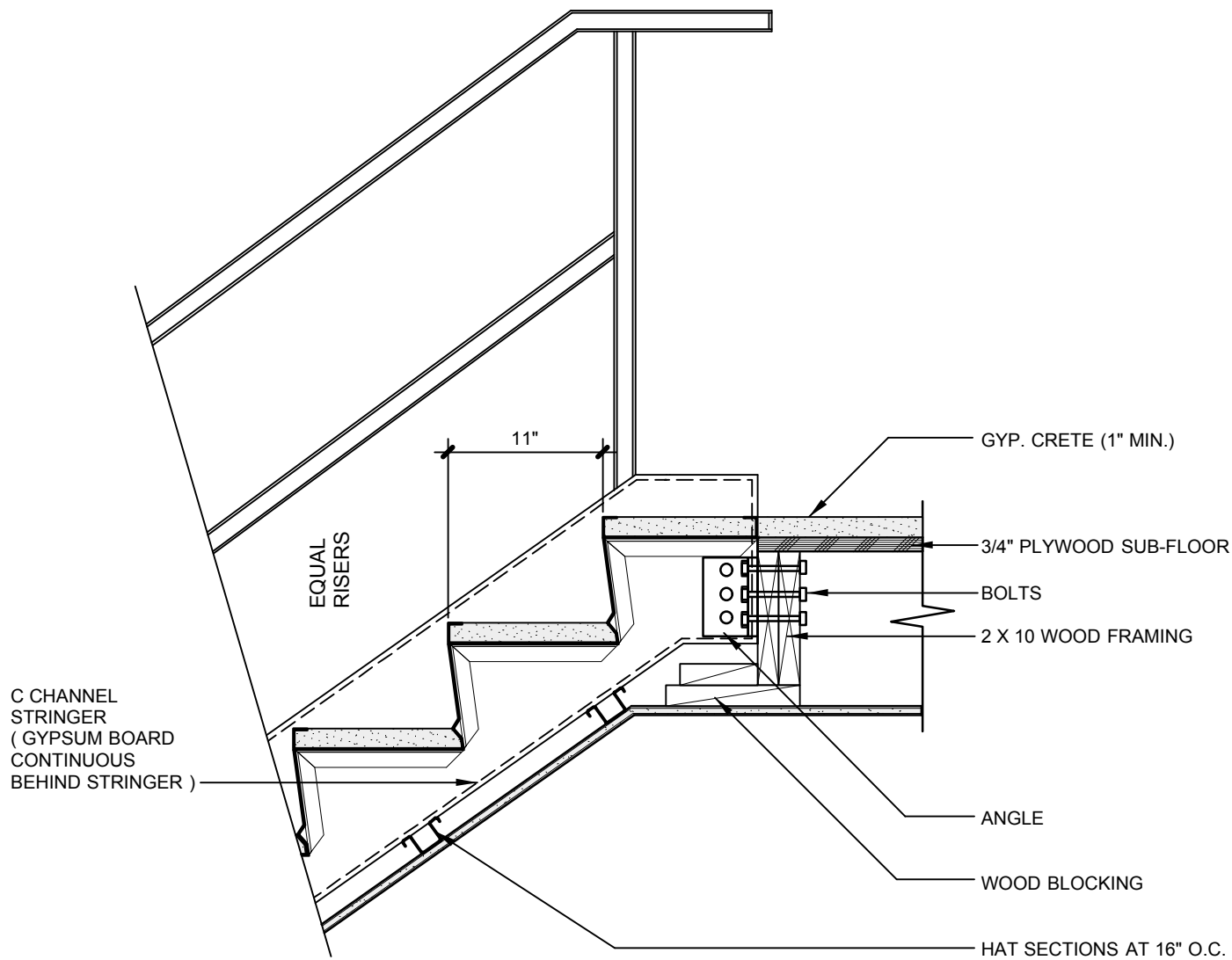
Howard & Associates International, Inc.
1416 Hugh Wallis Rd
Lafayette, LA 70508

Elevations, Foundation Plan and Details

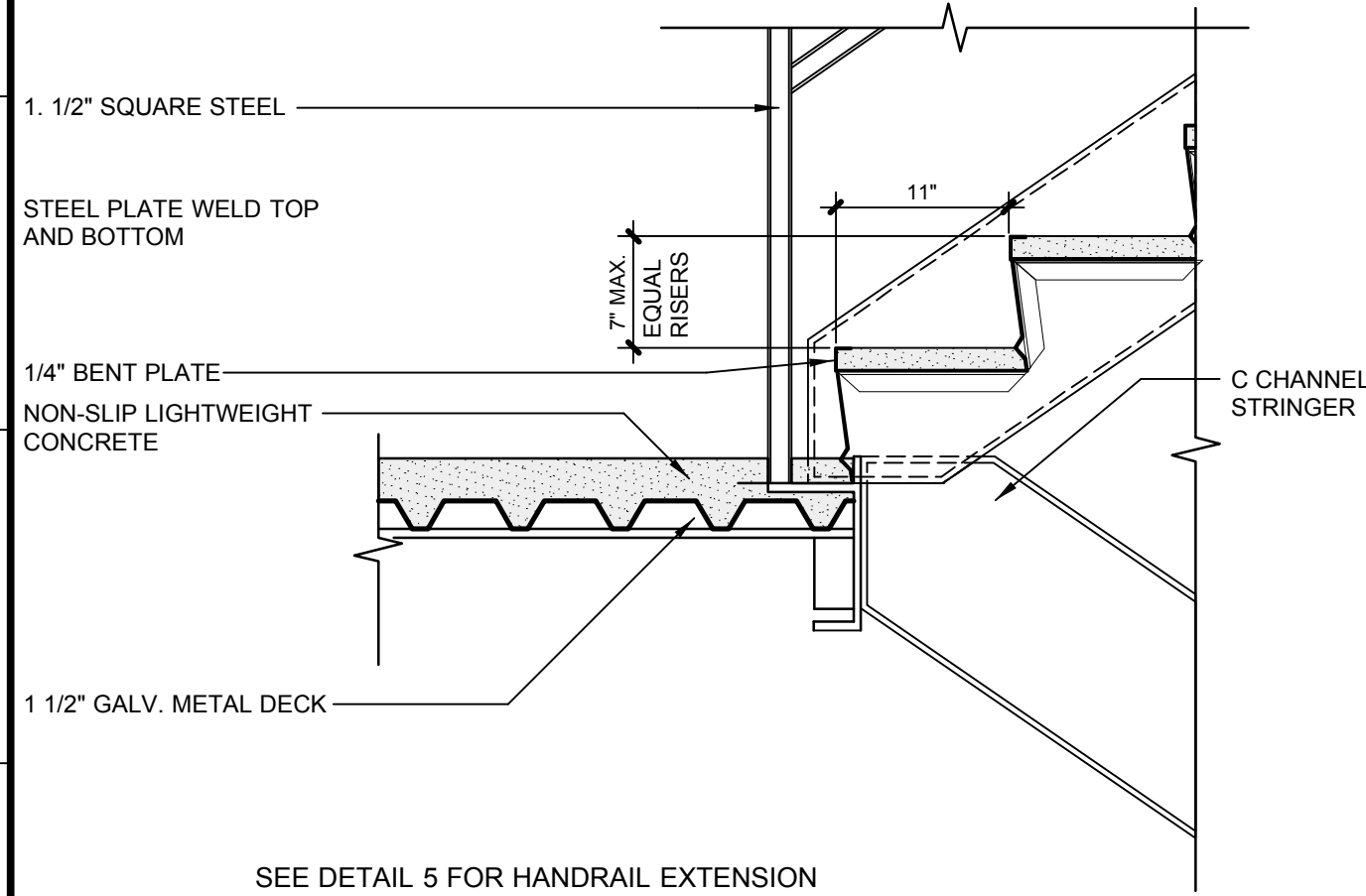
Scale	AS NOTED	Project No.	0840
		Sheet Number	A-2
Date	7/25/08		OF 2



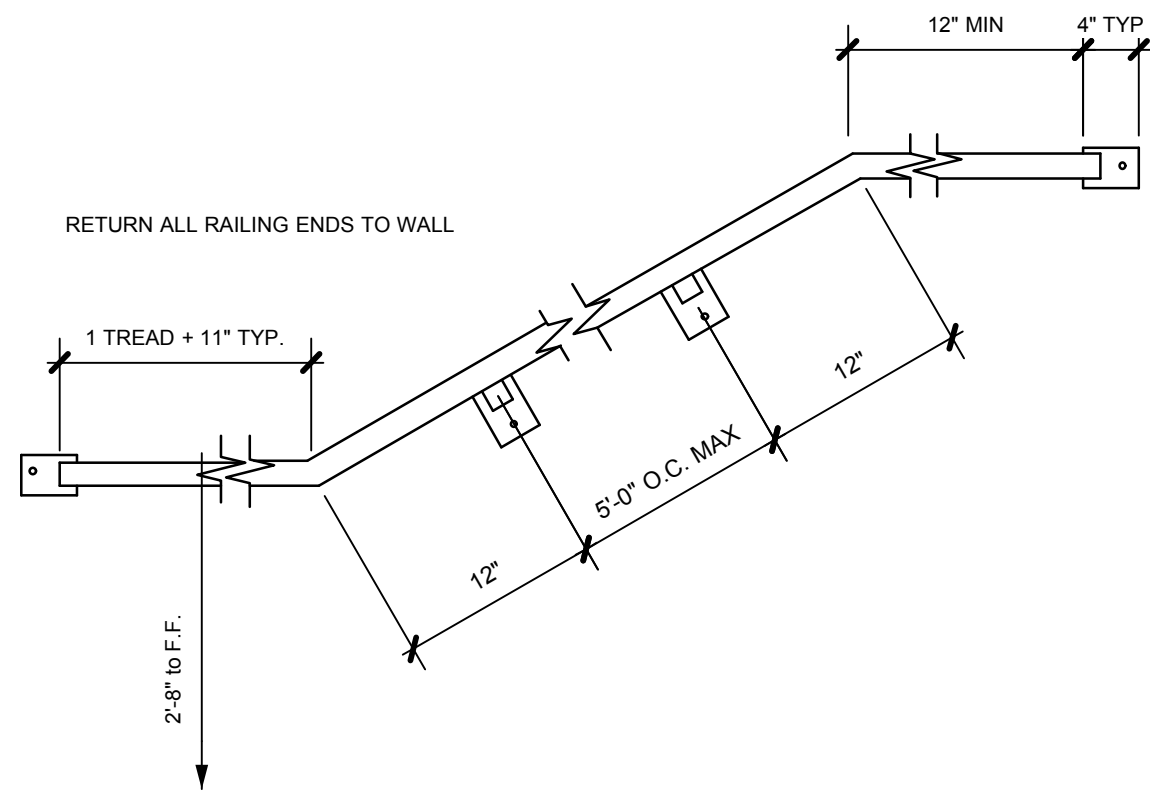
1 INTERIOR ELEVATION AT STAIRS
Scale: 1/4" = 1'-0"



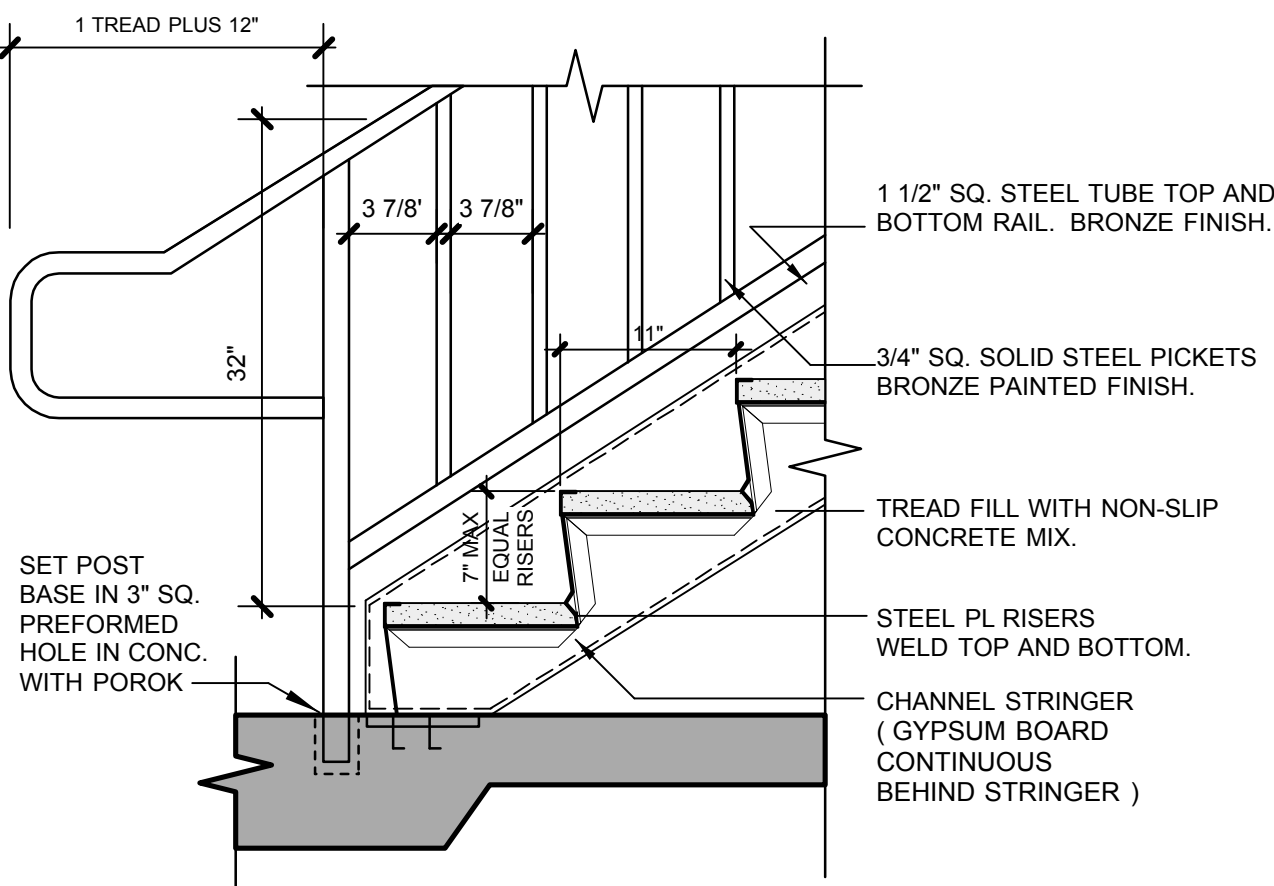
2 STRINGER CONNECTION
Scale: 1" = 1'-0"



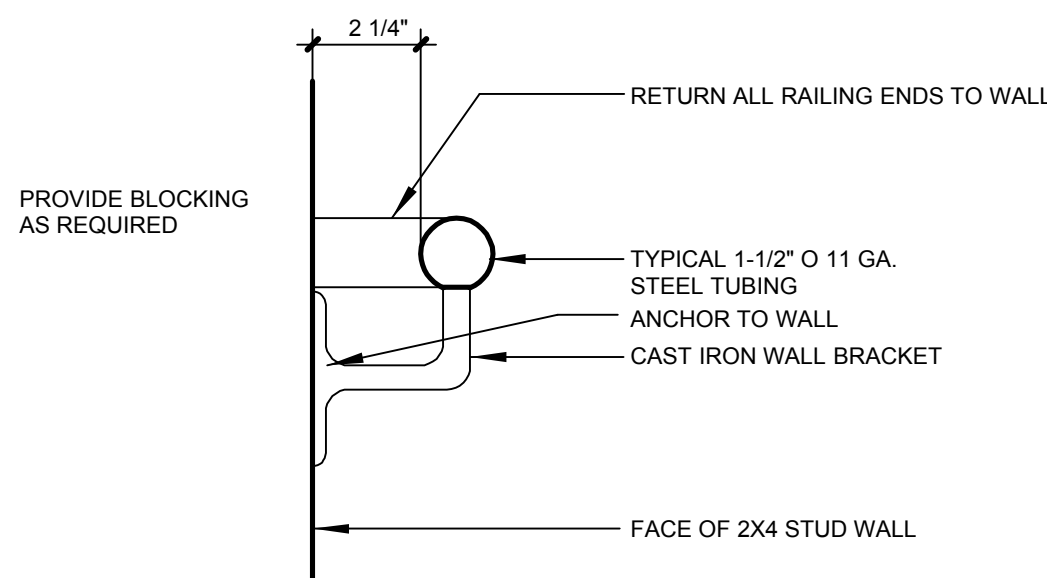
3 STRINGER DETAIL
Scale: 1" = 1'-0"



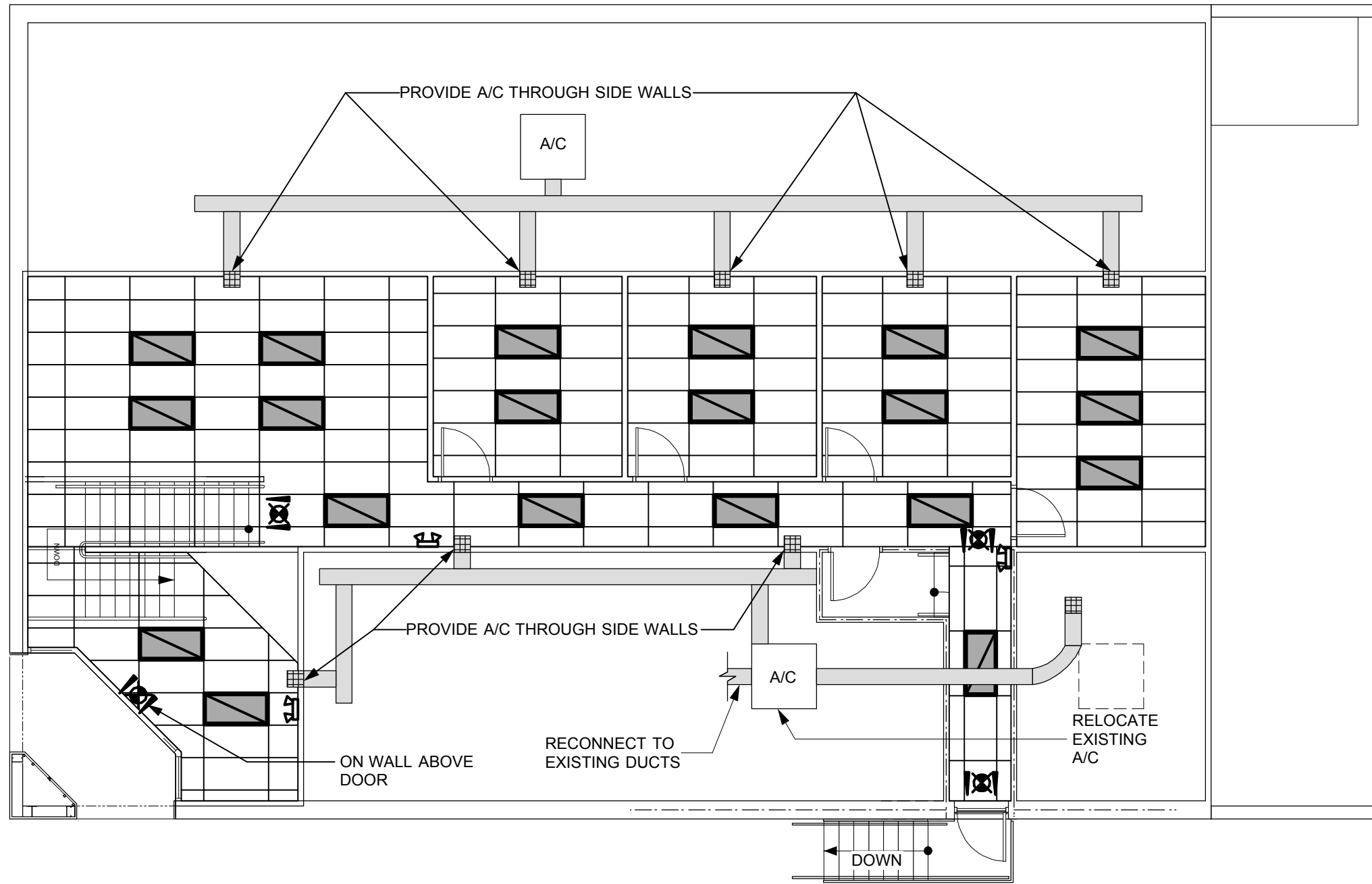
4 WALL RAIL DETAIL
Scale: 1" = 1'-0"



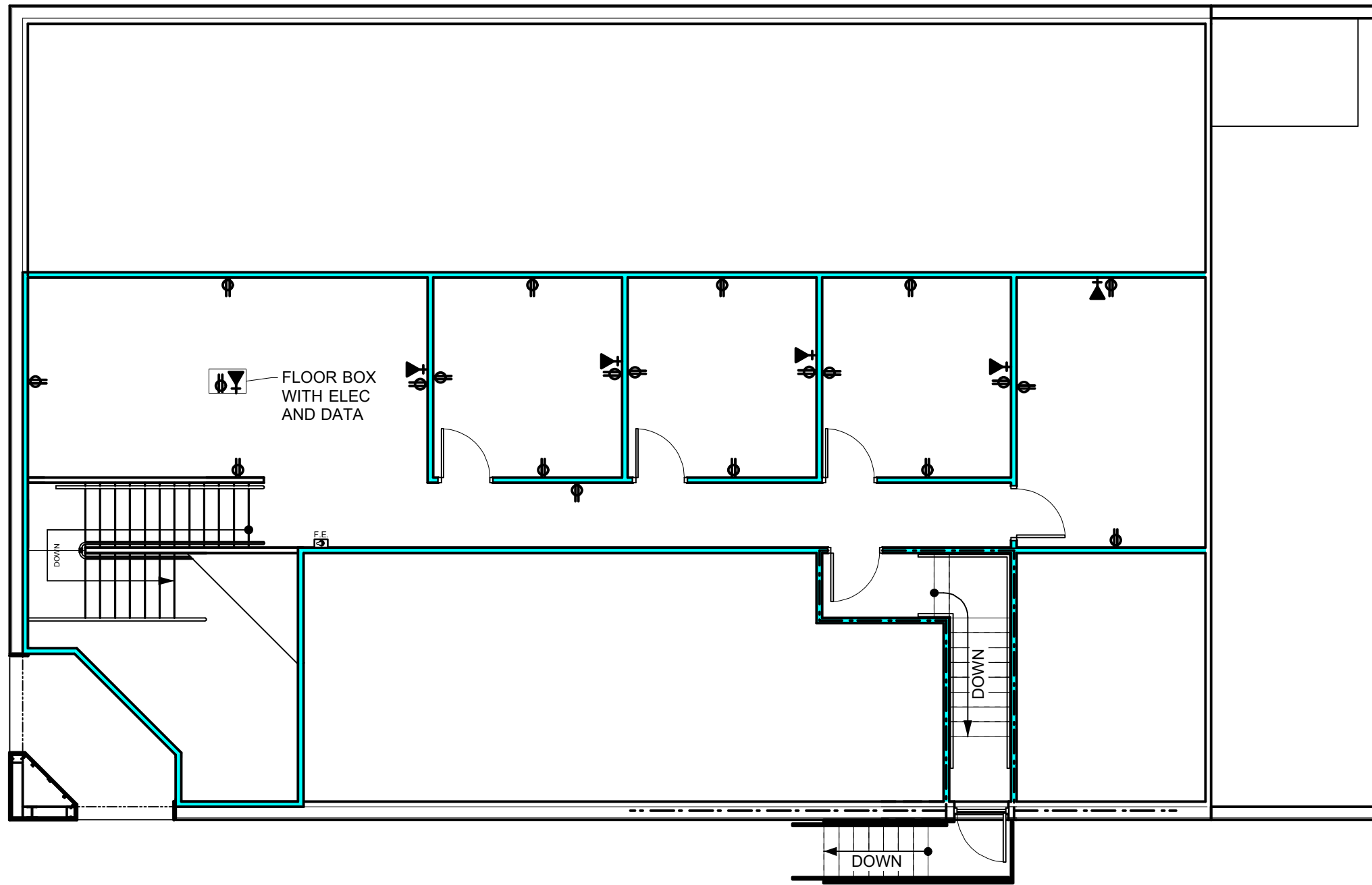
5 STAIR DETAIL
NOT TO SCALE



6 HANDRAIL DETAIL
Scale: 3" = 1'-0"



7 REFLECTED CEILING PLAN
Scale: 1/8" = 1'-0"



8 ELECTRICAL PLAN
Scale: 1/8" = 1'-0"

KEYNOTES

- 02300.A UNDISTURBED SOIL
02300.F 4" COMPACTED THICKNESS LIMESTONE
- 03300.A 3000 PSI CONCRETE
03300.B 6 MIL POLYETHYLENE VAPOR BARRIER (MINIMUM 6" TAPED LAPS; PATCH PENETRATIONS WITH ROOFING CEMENT)
03300.C 6"x 6" - W2.9 x W2.9 WELDED WIRE FABRIC AT CENTERLINE OF SLAB (6" LAPS W/ TIES AT 24" O.C.)
03300.D ROUGHEN CONCRETE (1/4 RIDGES MINIMUM) AND ADD 1-#5 CONTINUOUS AT COLD JOINT BETWEEN FOOTING AND SLAB POURS; CONTRACTOR'S OPTION TO BREAK POUR.
03300.G ASPHALT/FIBER EXPANSION JOINT W/ URETHANE SEALANT
03300.L #4 DOWELS AT 24" O.C. (BORE INTO EXISTING SLAB)
03300.N #5 RE-BARS AT 6" O.C. EACH WAY.
03300.BH 6 - #5 RE-BARS CONTINUOUS W/ #3 STIRRUPS AT 24" O.C.
- 05500.A STEEL STAIR
05500.BF 6" DIAMETER STEEL PIPE FILLED WITH CONCRETE AND PAINTED
- 08111.A HOLLOW METAL DOOR
- 08331.A OVERHEAD COILING DOOR
- 13125.A METAL WALL PANELS
13125.B METAL ROOF PANELS
13125.E DOWNSPOUT/SPLASHBLOCK
13125.AG METAL BUILDING AWNING
13125.AQ ROOF VENT
- 16000.I WALL PACK LIGHT FIXTURE (SEE ELECTRICAL SPECS)

No.	REVISIONS/SUBMISSIONS	Date
-----	-----------------------	------

Drawings Prepared By

David Courville
ARCHITECT
200 Jefferson St. Lafayette, LA 70501
phone: (337) 234-4166 • fax: (337) 234-7411 • dcarch@bellsouth.net

Project: **SECOND FLOOR BUILD-OUT FOR:**
Howard & Associates International, Inc.
1416 Hugh Wallis Rd
Lafayette, LA 70508

Reflected Ceiling Plan & Electrical Plan		
Scale	AS NOTED	Project No. 0840
		Sheet Number
Date	7/25/08	A-3 OF 2