

# Southland Plaza

5801 W Park Ave Houma, LA 70364

## PROPERTY SUMMARY



## Property Description

Newly renovated retail center at the corner of MLK Boulevard and W Park Avenue. Located across from Southland Mall, Rouses Market, and Sam's. The space is in white shell condition with new flooring and lighting throughout.

## Offering Summary

Lease Rate:	\$8.00 - 14.00 SF/yr (NNN)
Available SF:	912 - 33,340 SF
Building Size:	58,947 SF
Lot Area:	4.73 Acres

**Jordan Johnson**  
504.252.1410  
jjohnson@beaubox.com

Broker of Record, Beau J. Box; Licensed by the Louisiana Real Estate Commission, Mississippi Real Estate Commission, Alabama Real Estate Commission and Florida Real Estate Commission, USA. This information has been secured from sources we believe to be reliable, but we make no representations or warranties, expressed or implied, as to the accuracy of the information. References to square footage or age are approximate. Buyer must verify the information and bears all risk for any inaccuracies. © Beau Box Commercial Real Estate. 5500 Bankers Avenue, Baton Rouge, LA 70808 | 225-237-3343. | April 22, 2025



LEASE SPACES

Available Spaces

Suite	Size (SF)	Lease Type	Lease Rate
Suite 111	33,340 SF	NNN	\$8.00 SF/yr
Suite 101	1,326 SF	NNN	\$14.00 SF/yr
Suite 105	1,824 - 2,736 SF	NNN	\$14.00 SF/yr
Suite 106	912 - 2,736 SF	NNN	\$14.00 SF/yr
Suite 108	1,200 - 3,588 SF	NNN	\$14.00 SF/yr
Suite 109	2,388 - 3,588 SF	NNN	\$14.00 SF/yr
Suite 201	1,216 - 4,864 SF	NNN	\$10.00 SF/yr
Suite 202	1,216 - 4,864 SF	NNN	\$10.00 SF/yr
Suite 203	1,216 - 4,864 SF	NNN	\$10.00 SF/yr
Suite 204	1,216 - 4,864 SF	NNN	\$10.00 SF/yr

**Jordan Johnson**  
504.252.1410  
jjohnson@beaubox.com

Broker of Record, Beau J. Box; Licensed by the Louisiana Real Estate Commission, Mississippi Real Estate Commission, Alabama Real Estate Commission and Florida Real Estate Commission, USA. This information has been secured from sources we believe to be reliable, but we make no representations or warranties, expressed or implied, as to the accuracy of the information. References to square footage or age are approximate. Buyer must verify the information and bears all risk for any inaccuracies. © Beau Box Commercial Real Estate. 5500 Bankers Avenue, Baton Rouge, LA 70808 | 225-237-3343. | April 22, 2025





**Southland Plaza**  
5801 W Park Ave Houma, LA 70364

RETAILER MAP



**Jordan Johnson**  
504.252.1410  
jjohnson@beaubox.com

Broker of Record, Beau J. Box; Licensed by the Louisiana Real Estate Commission, Mississippi Real Estate Commission, Alabama Real Estate Commission and Florida Real Estate Commission, USA. This information has been secured from sources we believe to be reliable, but we make no representations or warranties, expressed or implied, as to the accuracy of the information. References to square footage or age are approximate. Buyer must verify the information and bears all risk for any inaccuracies. © Beau Box Commercial Real Estate. 5500 Bankers Avenue, Baton Rouge, LA 70808 | 225-237-3343. | April 22, 2025





**Southland Plaza**  
5801 W Park Ave Houma, LA 70364

LOCATION MAP



**Jordan Johnson**  
504.252.1410  
jjohnson@beaubox.com

Broker of Record, Beau J. Box; Licensed by the Louisiana Real Estate Commission, Mississippi Real Estate Commission, Alabama Real Estate Commission and Florida Real Estate Commission, USA. This information has been secured from sources we believe to be reliable, but we make no representations or warranties, expressed or implied, as to the accuracy of the information. References to square footage or age are approximate. Buyer must verify the information and bears all risk for any inaccuracies. © Beau Box Commercial Real Estate. 5500 Bankers Avenue, Baton Rouge, LA 70808 | 225-237-3343. | April 22, 2025

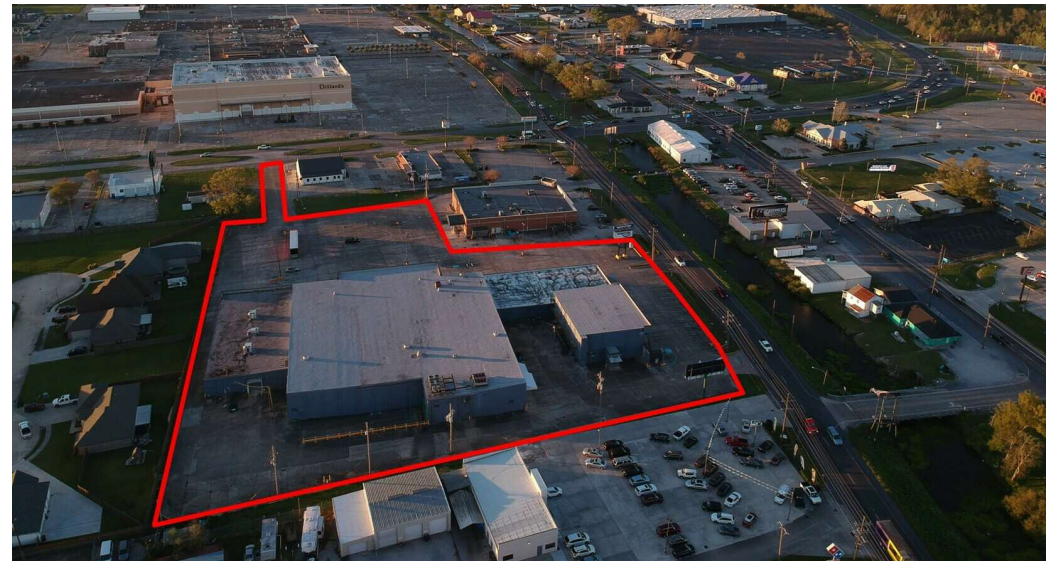
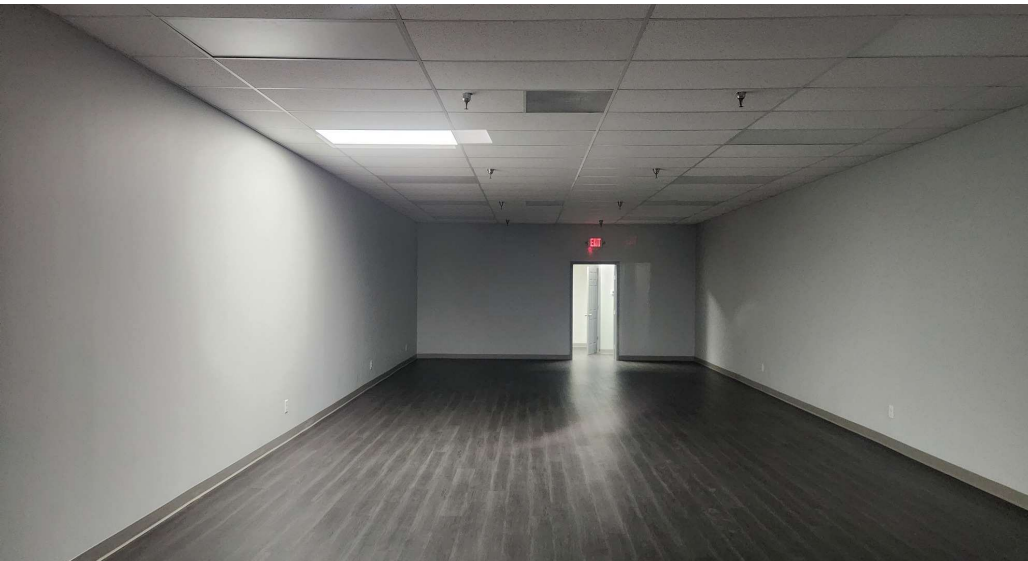




# Southland Plaza

5801 W Park Ave Houma, LA 70364

## ADDITIONAL PHOTOS



**Jordan Johnson**  
504.252.1410  
jjohnson@beaubox.com

Broker of Record, Beau J. Box; Licensed by the Louisiana Real Estate Commission, Mississippi Real Estate Commission, Alabama Real Estate Commission and Florida Real Estate Commission, USA. This information has been secured from sources we believe to be reliable, but we make no representations or warranties, expressed or implied, as to the accuracy of the information. References to square footage or age are approximate. Buyer must verify the information and bears all risk for any inaccuracies. © Beau Box Commercial Real Estate. 5500 Bankers Avenue, Baton Rouge, LA 70808 | 225-237-3343. | April 22, 2025





# Southland Plaza

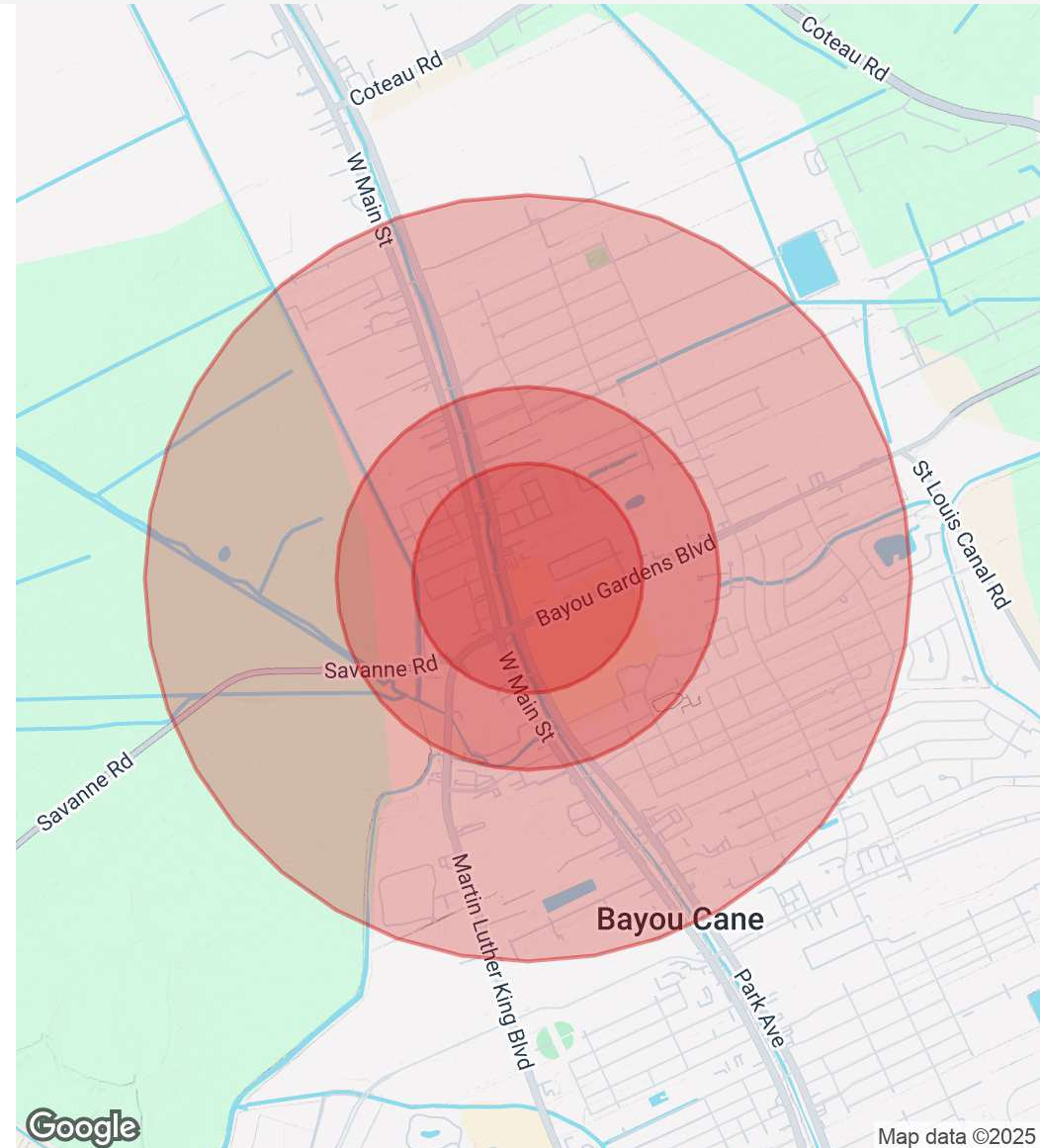
5801 W Park Ave Houma, LA 70364

## DEMOGRAPHICS MAP & REPORT

Population	0.3 Miles	0.5 Miles	1 Mile
Total Population	1,975	15,031	58,070
Average Age	41	46	43
Average Age (Male)	41	45	43
Average Age (Female)	41	47	43

Households & Income	0.3 Miles	0.5 Miles	1 Mile
Total Households	1,044	7,601	27,863
# Of Persons Per HH	1.9	2	2.1
Average HH Income	\$96,199	\$89,848	\$89,759
Average House Value	\$713,421	\$887,245	\$900,967

Demographics data derived from AlphaMap



**Jordan Johnson**  
504.252.1410  
jjohnson@beaubox.com

Broker of Record, Beau J. Box; Licensed by the Louisiana Real Estate Commission, Mississippi Real Estate Commission, Alabama Real Estate Commission and Florida Real Estate Commission, USA. This information has been secured from sources we believe to be reliable, but we make no representations or warranties, expressed or implied, as to the accuracy of the information. References to square footage or age are approximate. Buyer must verify the information and bears all risk for any inaccuracies. © Beau Box Commercial Real Estate. 5500 Bankers Avenue, Baton Rouge, LA 70808 | 225-237-3343. | April 22, 2025

