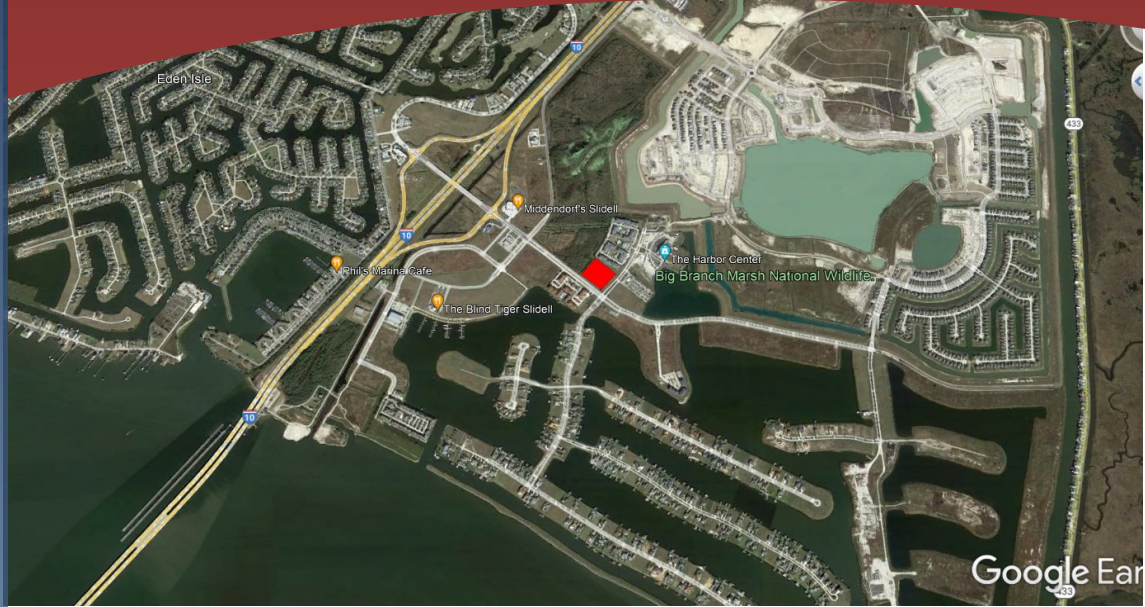


FOR SALE

5.8 Acres In Lakeshore

Oak Harbor Blvd.,
Slidell, LA

- Easy access to Interstate 12
- No Wetlands
- Water & Sewer Available
- Cleared with some fill
- Part of Lakeshore Estates PUD
- \$6.00 SF



5.8 Acres on the corner of Oak Harbor Blvd and Lakeshore Blvd across from the entrance to the prestigious Lakeshore Estates with luxury waterfront homes and high household incomes. This is part of a PUD which also includes DR Horton's Lakeshore Villages which has over 1300 new homes and another 1700 to be built.

Demographics—2021 Estimates	1 Mile	3 Mile	5 Mile
Population	3,111	19,960	41,793
Average Household Income	\$71,875	\$82,648	\$76,416

GULF STATES
REAL ESTATE SERVICES
TURNING IDEAS INTO REALITY

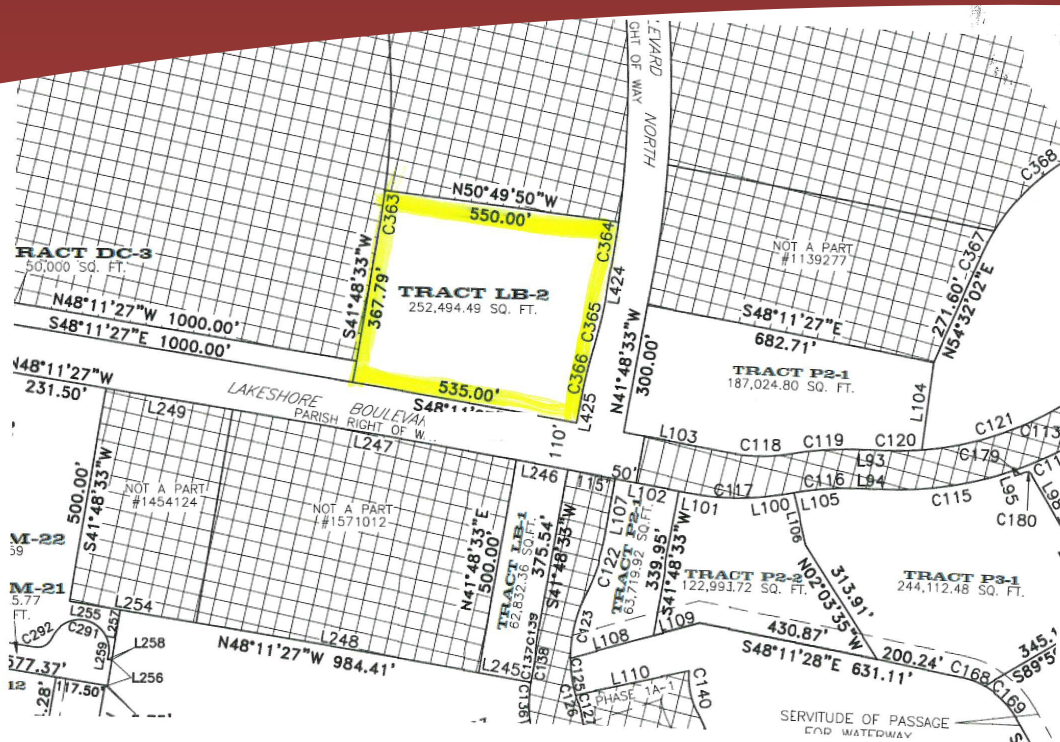
109 New Camellia Blvd.
Suite 100,
Covington, LA 70433
Office: (985) 792-4385
Fax: (985) 792-4392
www.gsres.com

**Excellent
Visibility**

- ◆ PROJECT MANAGEMENT
- ◆ BROKERAGE
- ◆ PROPERTY MANAGEMENT

Beth Lemonier
Cell: (985) 259-5199
Office: (985) 792-4385
blemonier@gsres.com

FOR SALE



- ◆ PROJECT MANAGEMENT
- ◆ BROKERAGE
- ◆ PROPERTY MANAGEMENT

Gulf States Real Estate Services, LLC makes no representations or warranties regarding the properties discussed herein. This information is subject to errors, omissions, changes in terms and conditions, prior sales, lease or withdrawal, without notice. 8/22

Beth Lemonier

Cell: (985) 259-5199

Office: (985) 792-4385

blemonier@gsres.com