



CLASS A OFFICE
FOR LEASE

Corporate ATRIUM

*5555 Hilton Avenue,
Baton Rouge, LA 70808*

CBRE

CORPORATE ATRIUM

5555 HILTON AVENUE,
BATON ROUGE, LA 70808

Corporate Atrium is a six-story, Class A office building prominently located at 5555 Hilton Avenue in the heart of Baton Rouge's highly desirable Acadian/College corridor. Constructed in 1983, the building totals 76,446 square feet of net rentable area, with a strong tenant mix led by IHeart Media, numerous law firms and insurance agencies. Corporate Atrium offers excellent visibility from I-10, with monument signage options.

Rental Rate: \$21 PSF



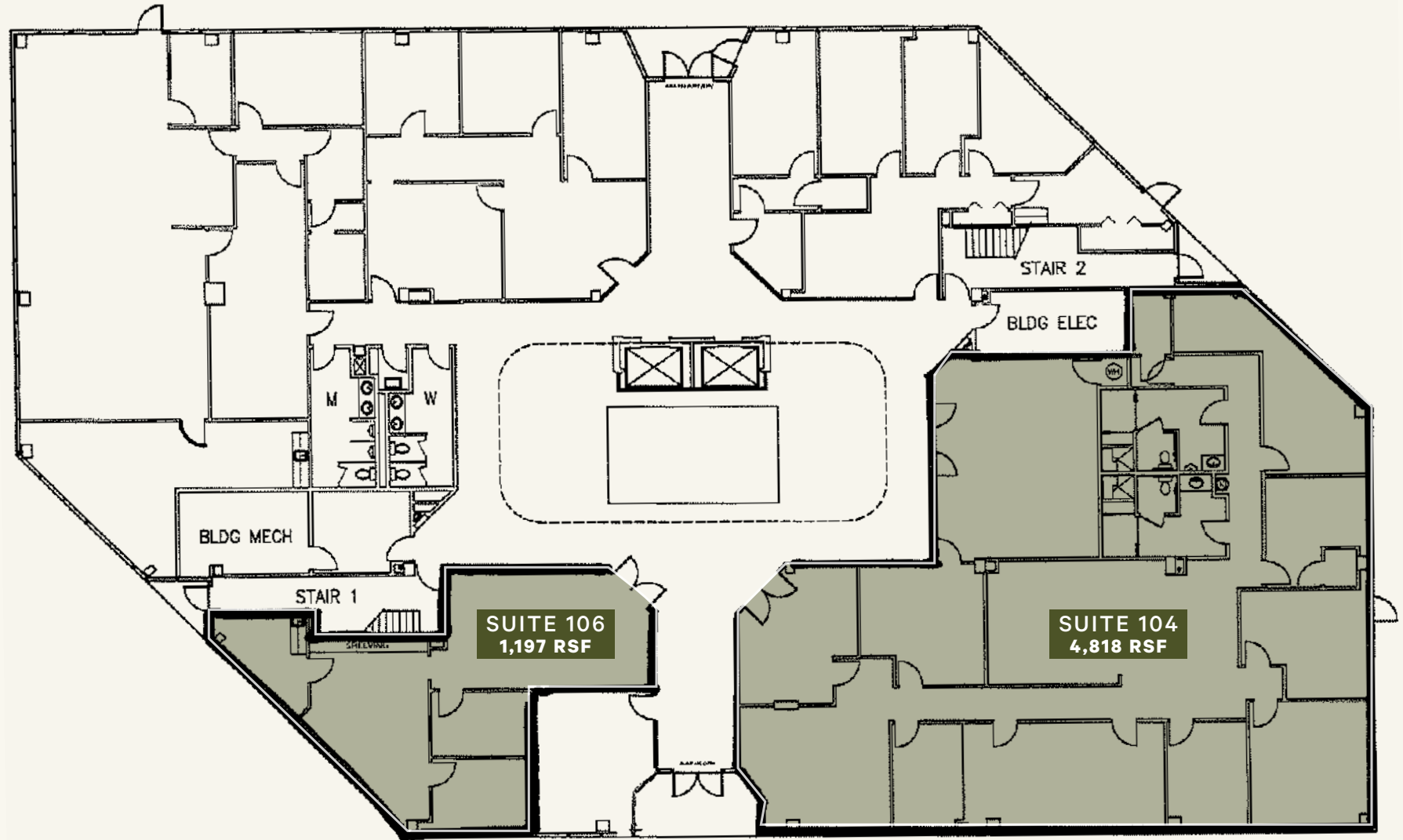
76,446 SFR
Net Rentable Area

1983
Year Built

4 per 1,000
Parking

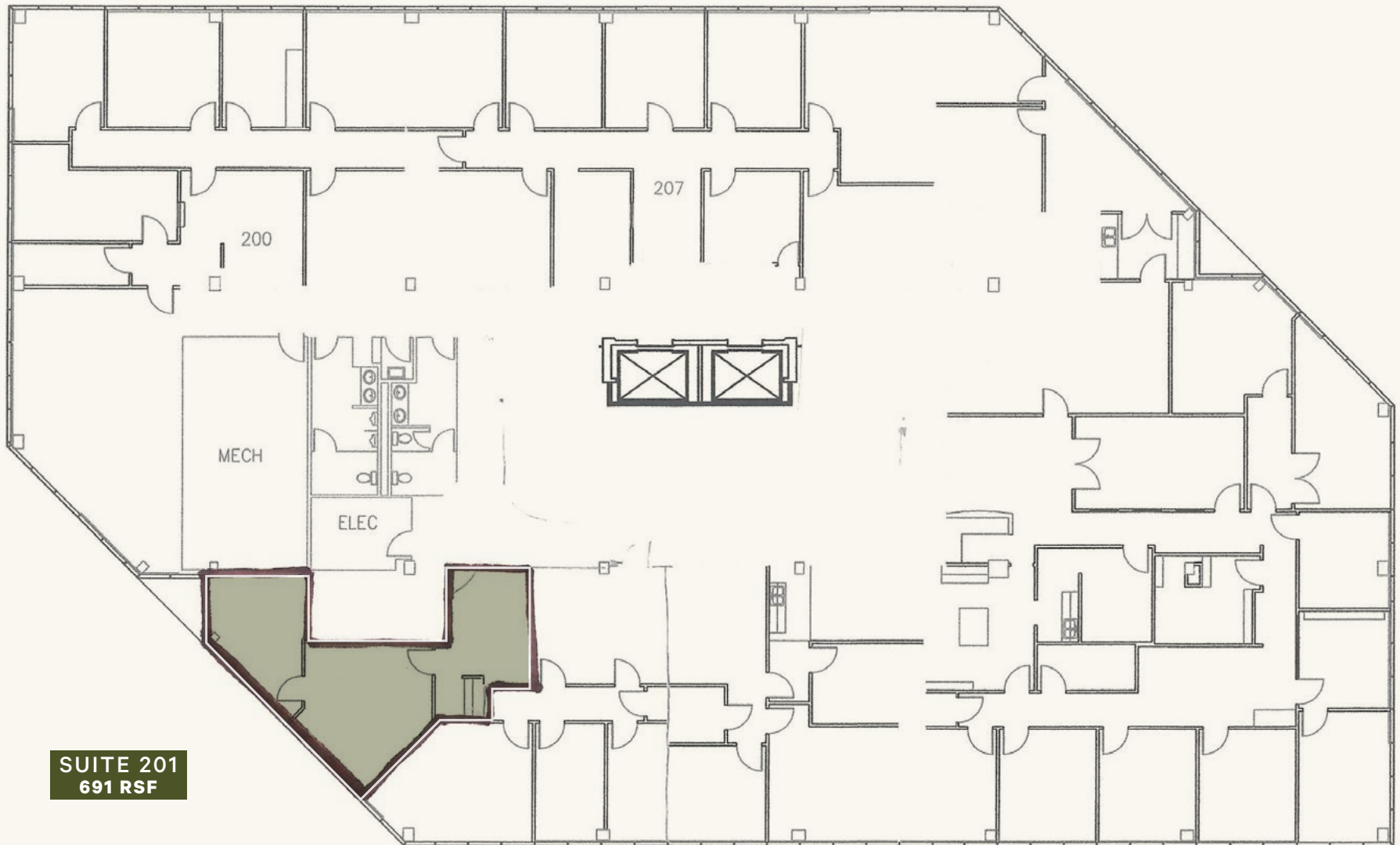
1ST FLOOR

FLOOR PLAN



2ND FLOOR

FLOOR PLAN

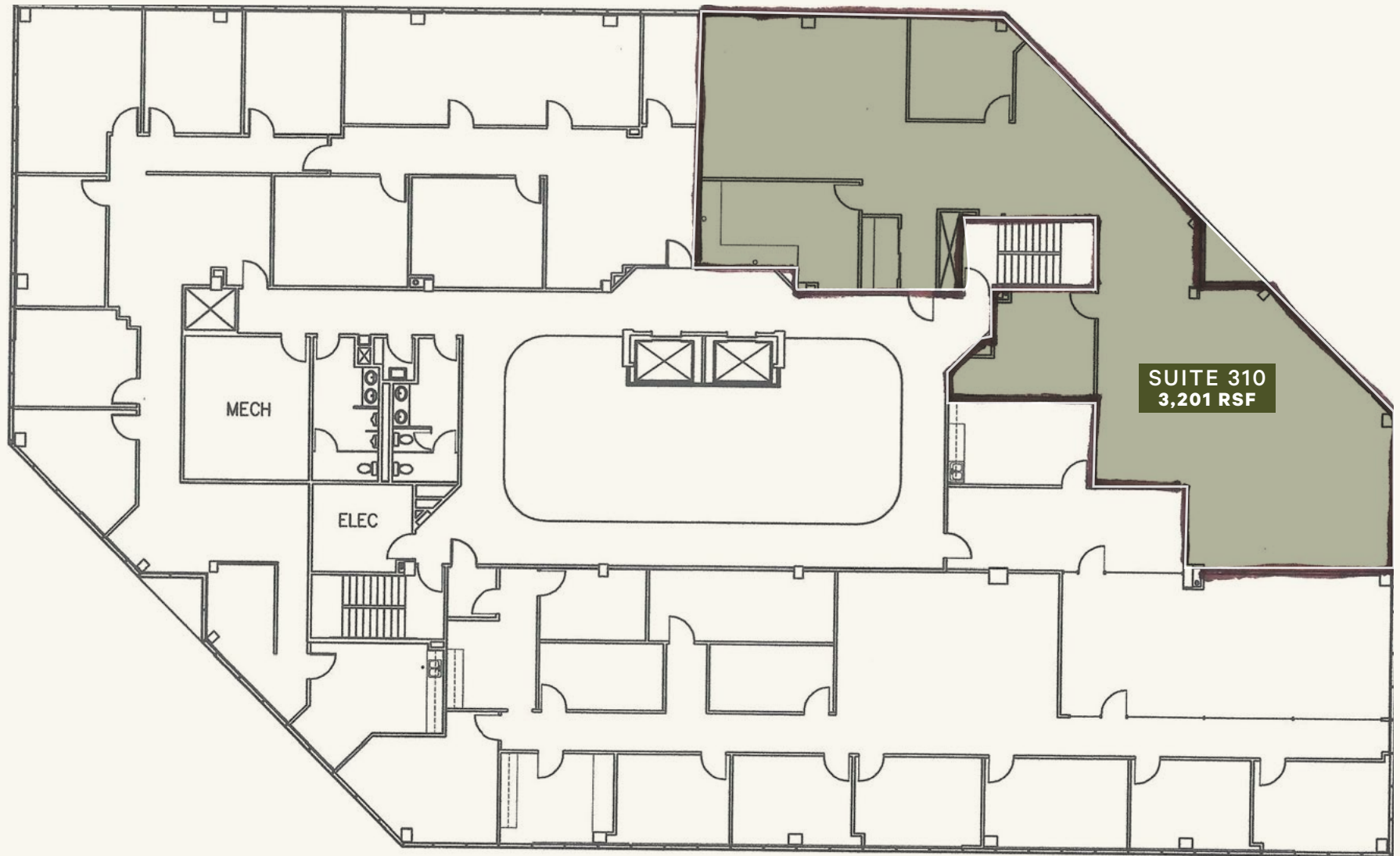


SUITE 201
691 RSF

CORPORATE ATRIUM

3RD FLOOR

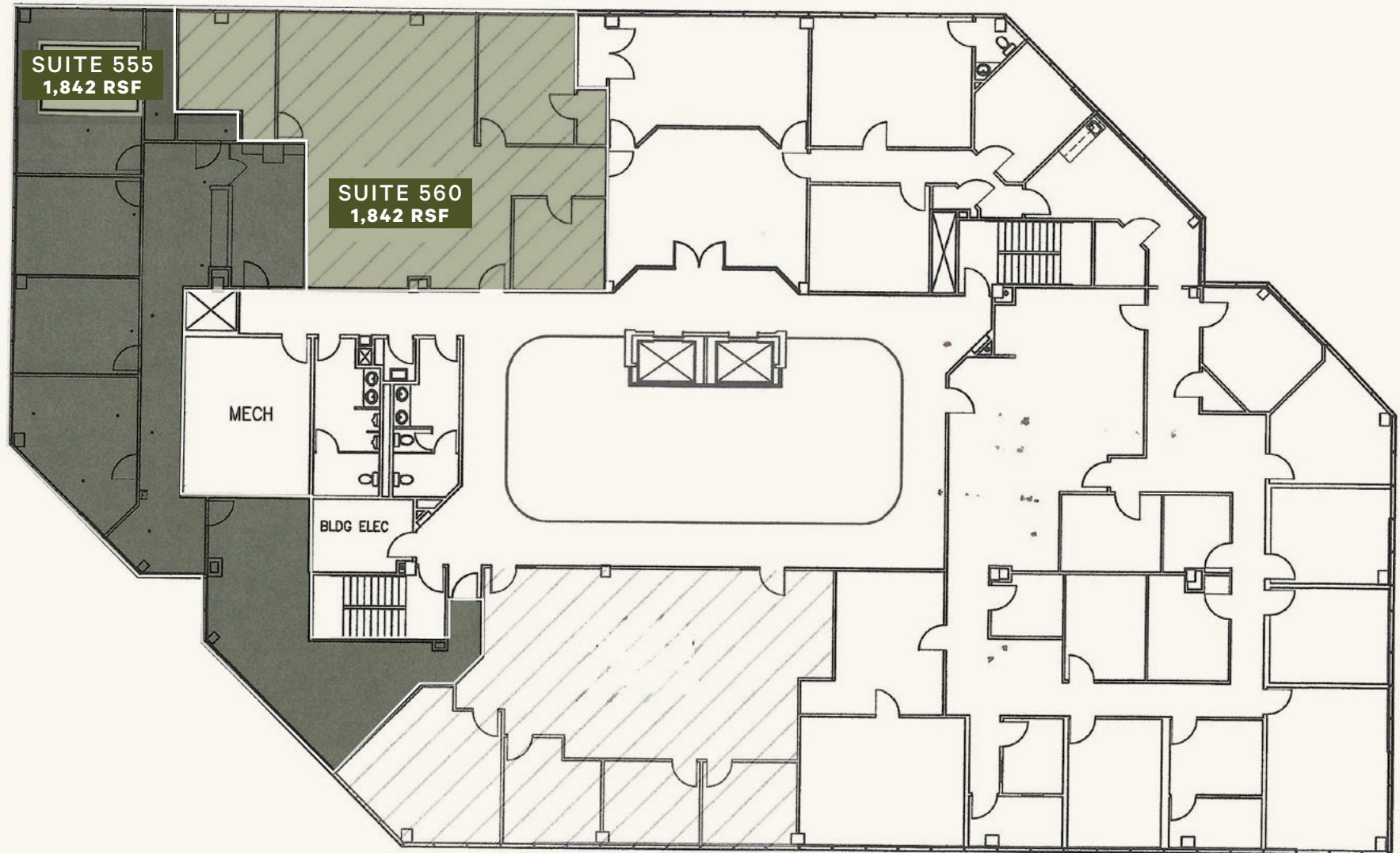
FLOOR PLAN



CORPORATE ATRIUM

5TH FLOOR

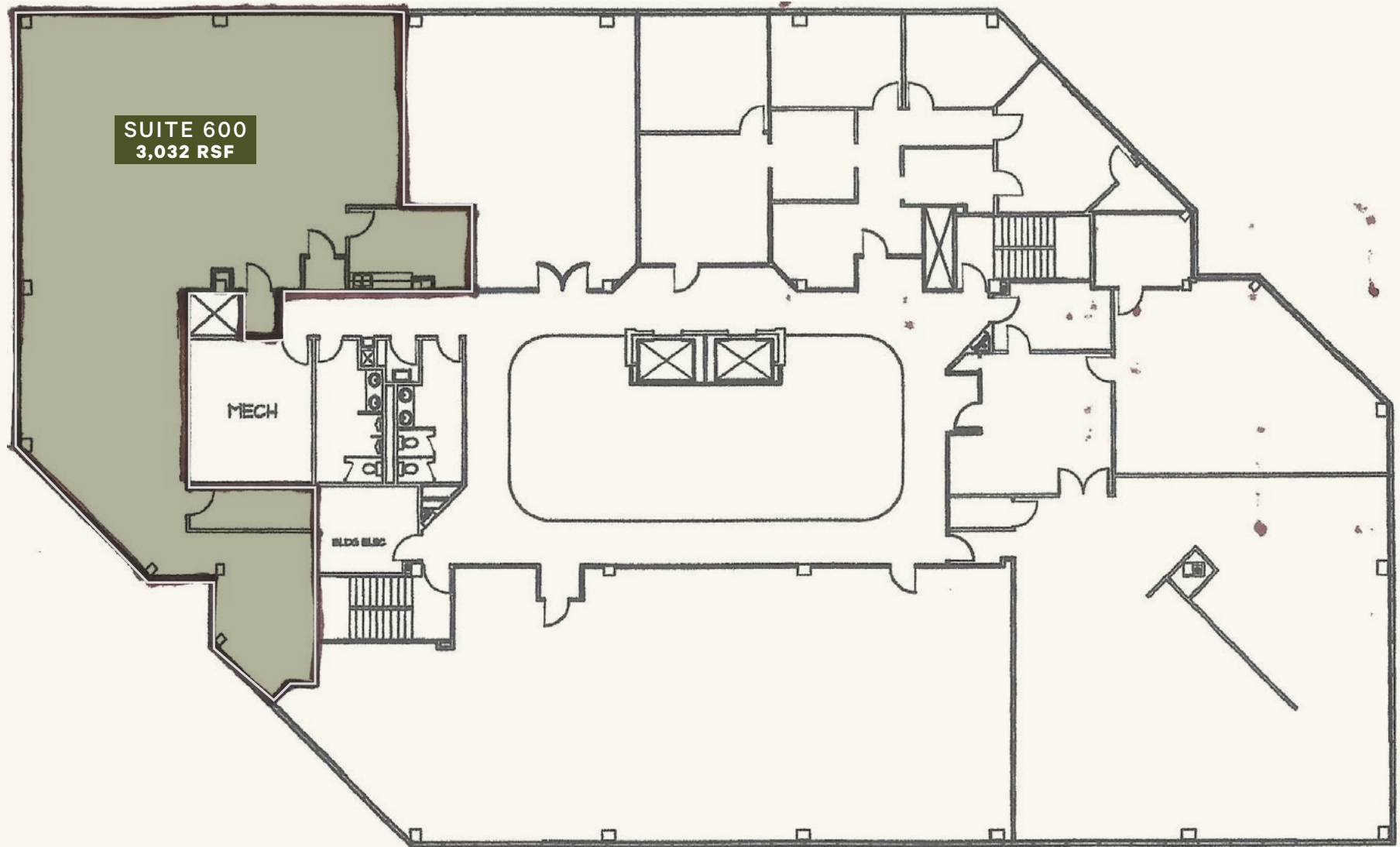
FLOOR PLAN



CORPORATE ATRIUM

6TH FLOOR

FLOOR PLAN



CORPORATE ATRIUM



WITHIN 1-MILE

29

restaurants & grocery

14

hotels

2

fitness



CLASS A OFFICE
FOR LEASE

Corporate ATRIUM

*5555 Hilton Avenue,
Baton Rouge, LA 70808*

JONANN STUTZMAN
Vice President
C 225 445 0473
jonann.stutzman@cbre.com

CBRE

www.cbre.com
Office: 225-952-1255
10101 Siegen Lane, Blding 1
Baton Rouge, LA 70810

© 2025 CBRE, Inc. All rights reserved. This information has been obtained from sources believed reliable but has not been verified for accuracy or completeness. CBRE, Inc. makes no guarantee, representation or warranty and accepts no responsibility or liability as to the accuracy, completeness, or reliability of the information contained herein. You should conduct a careful, independent investigation of the property and verify all information. Any reliance on this information is solely at your own risk. CBRE and the CBRE logo are service marks of CBRE, Inc. All other marks displayed on this document are the property of their respective owners, and the use of such marks does not imply any affiliation with or endorsement of CBRE. Photos herein are the property of their respective owners. Use of these images without the express written consent of the owner is prohibited.