

# THE NEW ORLEANS EXCHANGE CENTRE

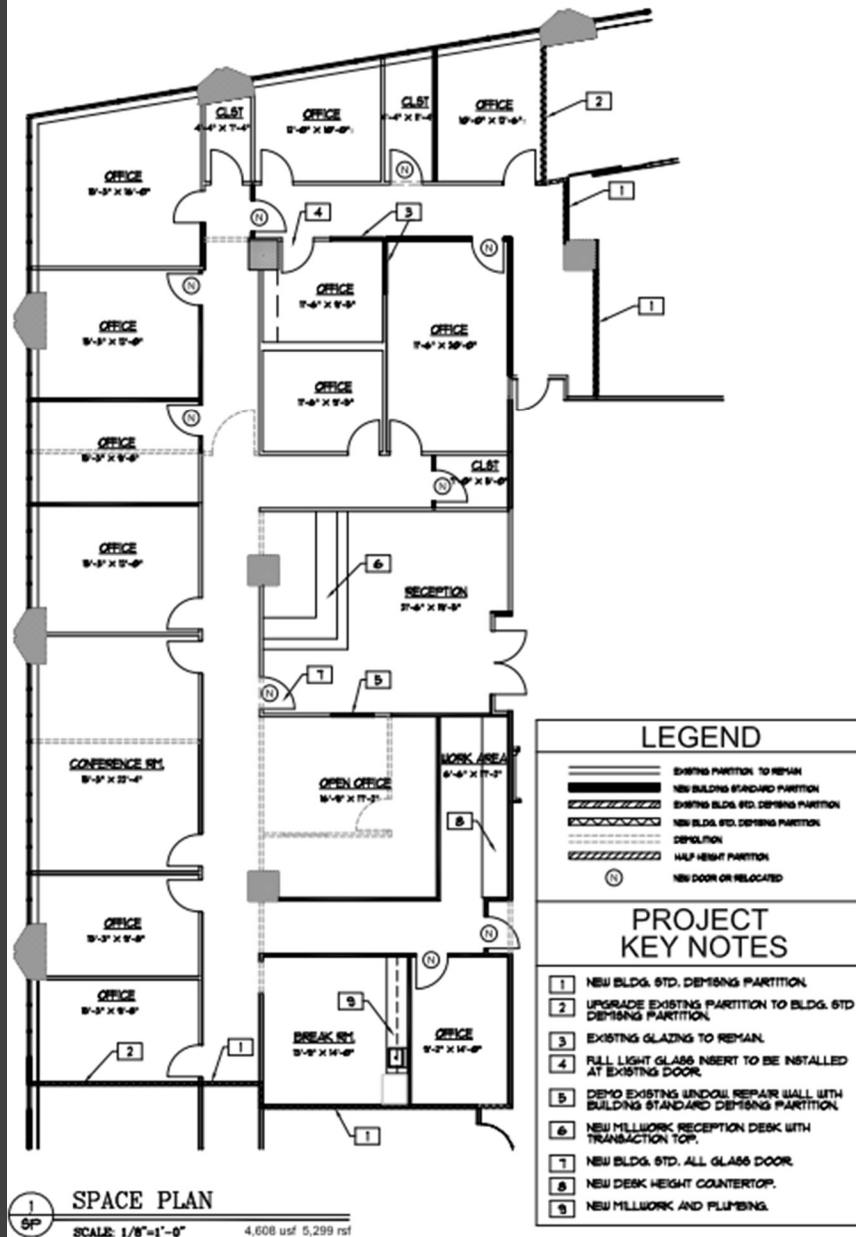
## 5<sup>th</sup> FLOOR 935 GRAVIER STREET

### SUITE DETAILS

- Suite 500 includes a double glass door entry off of elevator lobby
  - 5,299 rsf available
  - Brand new carpet and paint
  - Layout features 12 private offices, large reception, break room, conference room, 3 closets and an open area
- Base rate \$17.00 /rsf - \$7,507 /month

### PROPERTY FACTS

- 355,274 rsf on 21 floors
- Built in 1981
- Typical floor plan 20,000 rsf
- Former Chevron Headquarters
- Adjacent unreserved parking garage with 321 spaces
- Internal reserved parking garage with 89 spaces
- Additional unreserved parking with 125 spaces available in adjacent aLoft Hotel garage



**CORPORATE REALTY**

JOE GORMAN, CCIM  
(504) 581-5005  
jgorman@corp-realty.com

201 St. Charles Ave  
Suite 3811  
New Orleans, LA 70170