

THE NEW ORLEANS EXCHANGE CENTRE

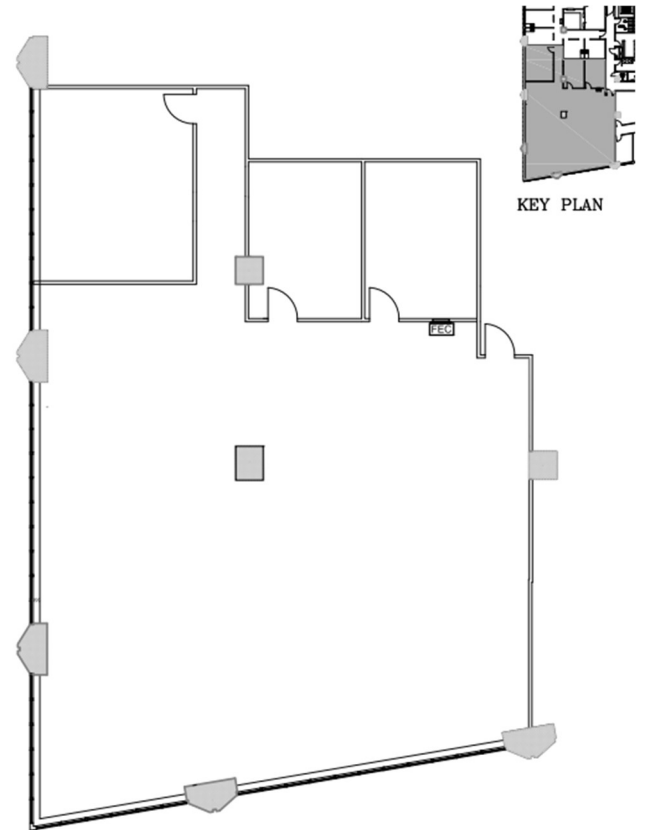
7th FLOOR 935 GRAVIER STREET

SUITE DETAILS

- 3,835 rsf
 - Large open area, two private offices, and a large conference room.
 - Suite features brand new carpet and paint. A sink can be added with a 5 year lease term.
- Base rate \$16.50/rsf \$5,273 /month

PROPERTY FACTS

- 355,274 rsf on 21 floors
- Built in 1981
- Typical floor plan 20,000 rsf
- Former Chevron Headquarters
- Adjacent unreserved parking garage with 321 spaces
- Internal reserved parking garage with 89 spaces
- Additional unreserved parking with 125 spaces available in adjacent aLoft Hotel garage



CORPORATE REALTY

JOE GORMAN, CCIM
(504) 581-5005
jgorman@corp-realty.com

201 St. Charles Ave
Suite 3811
New Orleans, LA 70170