

THE NEW ORLEANS
EXCHANGE
CENTRE

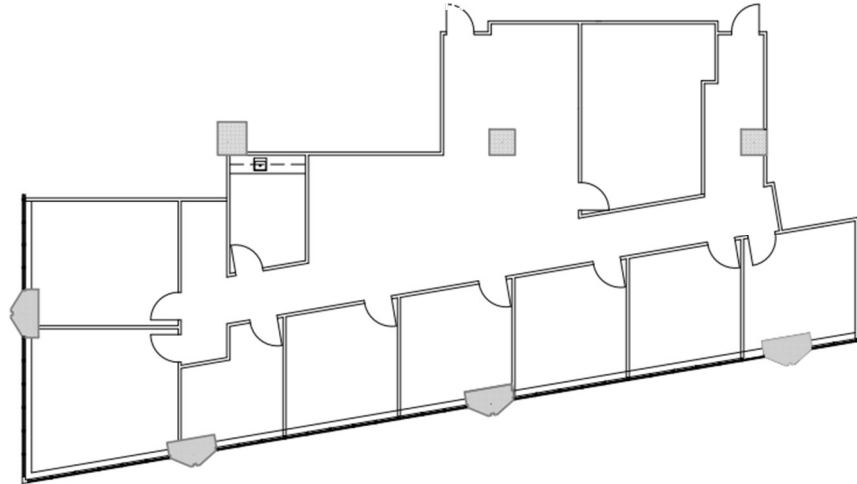
11th FLOOR
935 GRAVIER STREET

SUITE DETAILS

- 3,309 rsf on the 11th floor
- Layout features 8 private offices, large conf. room, reception area, kitchenette, brand new carpet and paint.
Base rate \$16.50/rsf or \$4,550 /mo

PROPERTY FACTS

- 355,274 rsf on 21 floors
- Built in 1981
- Typical floor plan 20,000 rsf
- Former Chevron Headquarters
- Adjacent unreserved parking garage with 321 spaces
- Internal reserved parking garage with 89 spaces
- Additional unreserved parking with 125 spaces available in adjacent aLoft Hotel garage



CORPORATE REALTY

JOE GORMAN, CCIM
(504) 581-5005
jgorman@corp-realty.com

201 St. Charles Ave
Suite 3811
New Orleans, LA 70170