

THE NEW ORLEANS
EXCHANGE
CENTRE

11th FLOOR
935 GRAVIER STREET

SUITE DETAILS

- Suite 1170
- 1,487 rsf available
- Layout features 3 large private offices, large open reception area, IT closet, breakroom with sink
- Base rate \$16.50/rsf -\$2,058/month

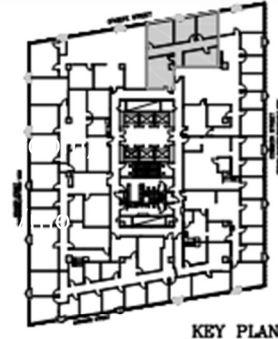
PROPERTY FACTS

- 355,274 rsf on 21 floors
- Built in 1981
- Typical floor plan 20,000 rsf
- Former Chevron Headquarters
- Adjacent unreserved parking garage with 321 spaces
- Internal reserved parking garage with 89 spaces
- Additional unreserved parking with 125 spaces available in adjacent aLoft Hotel garage

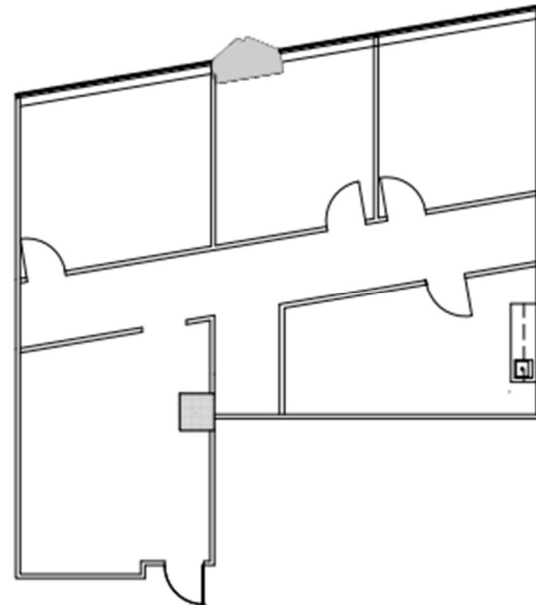


SUITE 1170

1,302 USF
1,497 RSF



KEY PLAN



CORPORATE REALTY

JOE GORMAN, CCIM
(504) 581-5005
jgorman@corp-realty.com

201 St. Charles Ave
Suite 3811
New Orleans, LA 70170