

THE NEW ORLEANS
EXCHANGE
CENTRE

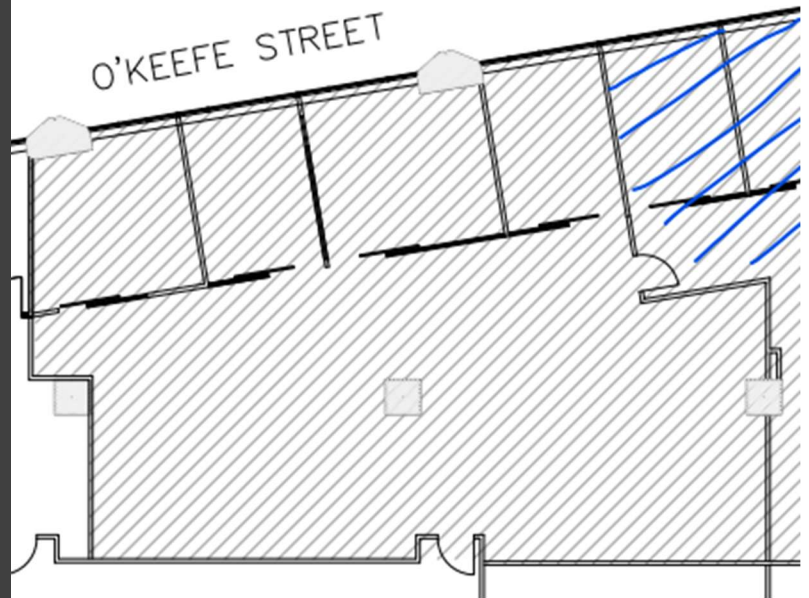
5th FLOOR
935 GRAVIER STREET

SUITE DETAILS

- Suite 520 includes 2,418 rsf
 - Completely renovated in 2018
 - Layout features 4 private offices with sliding glass doors, large open area with furniture in place, and sink with countertop and cabinets
- Base rate \$16.50 /rsf - \$3,324 /month

PROPERTY FACTS

- 355,274 rsf on 21 floors
- Built in 1981
- Typical floor plan 20,000 rsf
- Former Chevron Headquarters
- Adjacent unreserved parking garage with 321 spaces
- Internal reserved parking garage with 89 spaces
- Additional unreserved parking with 125 spaces available in adjacent aLoft Hotel garage



CORPORATE REALTY

JOE GORMAN, CCIM
(504) 581-5005
jgorman@corp-realty.com

201 St. Charles Ave
Suite 3811
New Orleans, LA 70170