

THE NEW ORLEANS  
**EXCHANGE**  
CENTRE

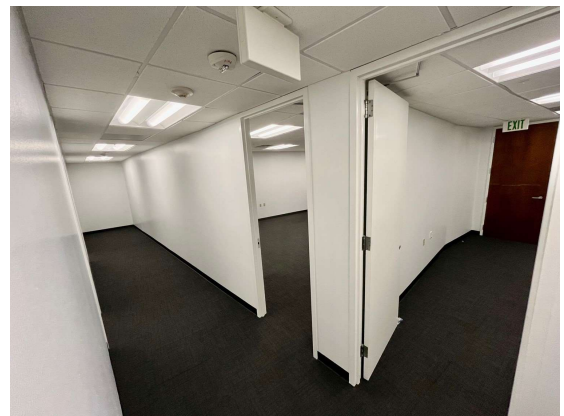
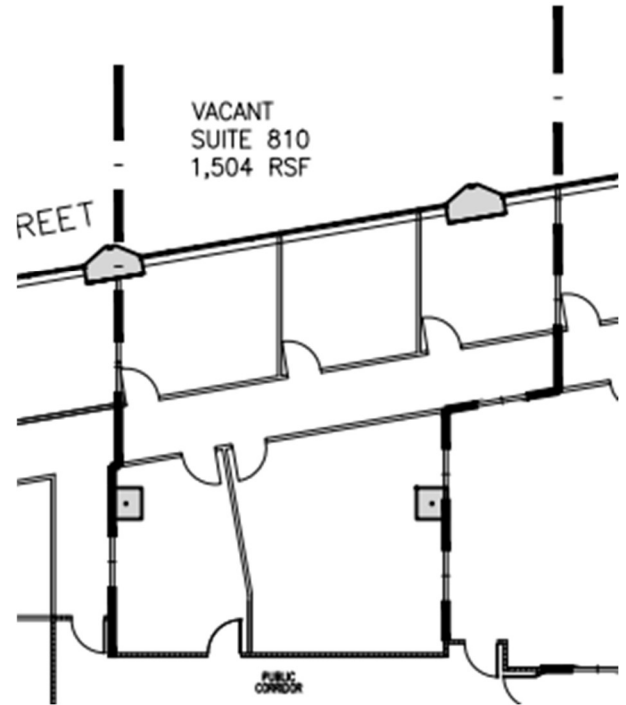
**8<sup>th</sup> FLOOR**  
**935 GRAVIER STREET**

**SUITE DETAILS**

- Suite 810 includes 3 private offices, large open area, and reception
- 1,504 rsf available
- Brand new carpet and paint
- Base rate \$16.50 /rsf
- \$2,068 per month

**PROPERTY FACTS**

- 355,274 rsf on 21 floors
- Built in 1981
- Typical floor plan 20,000 rsf
- Former Chevron Headquarters
- Adjacent unreserved parking garage with 321 spaces
- Internal reserved parking garage with 89 spaces
- Additional unreserved parking with 125 spaces available in adjacent aLoft Hotel garage



**CORPORATE REALTY**

JOE GORMAN, CCIM  
(504) 581-5005  
jgorman@corp-realty.com

201 St. Charles Ave  
Suite 3811  
New Orleans, LA 70170