

THE NEW ORLEANS
EXCHANGE
CENTRE

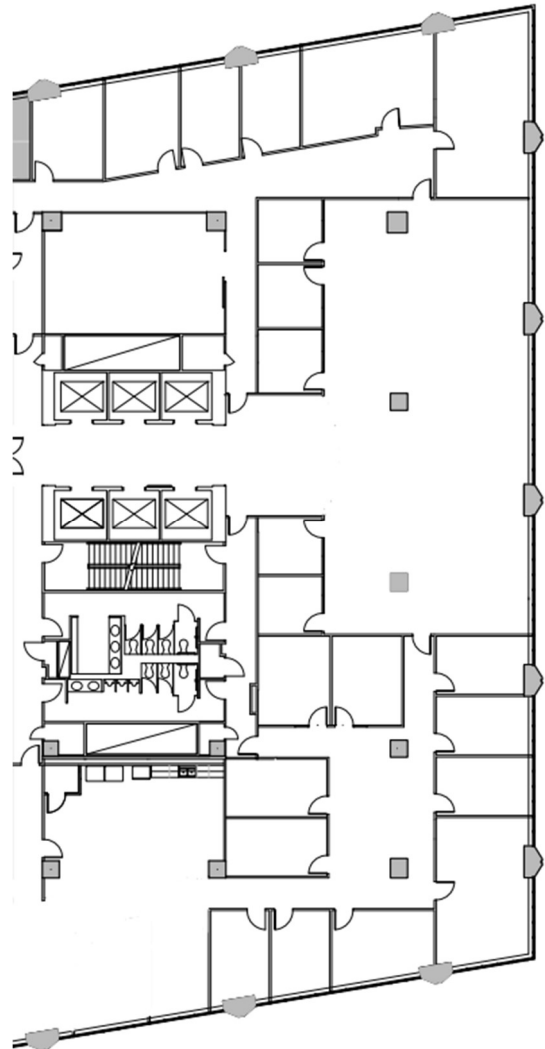
17th FLOOR
935 GRAVIER STREET

SUITE DETAILS

- Suite 1700
- 11,943 rsf available
- Layout features 20 private offices, large open area, bull pen, storage, 2 conference rooms, reception off elevator lobby and kitchen/break area
- 17th floor with great French Qtr view
- Suite can be divided as needed
- Base rate \$17.00/rsf
- Recently renovated restrooms

PROPERTY FACTS

- 355,274 rsf on 21 floors
- Built in 1981
- Typical floor plan 20,000 rsf
- Former Chevron Headquarters
- Adjacent unreserved parking garage with 321 spaces
- Internal reserved parking garage with 89 spaces
- Additional unreserved parking with 125 spaces available in adjacent aLoft Hotel garage



CORPORATE REALTY

JOE GORMAN, CCIM
(504) 581-5005
jgorman@corp-realty.com

201 St. Charles Ave
Suite 3811
New Orleans, LA 70170