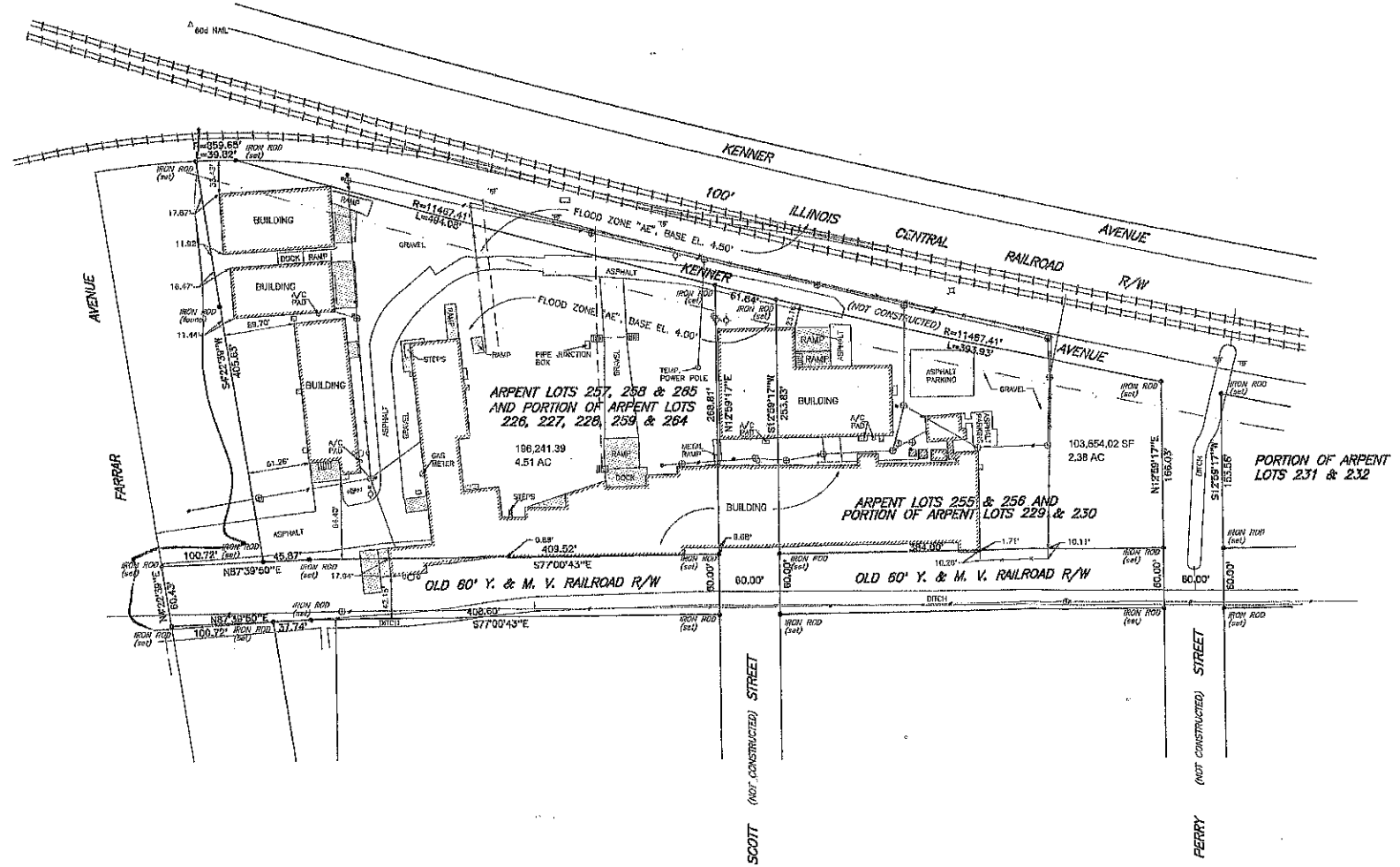


- LEGEND**
- BUILDING
 - BASELINE
 - EXISTING RIGHT OF WAY
 - CATCH BASIN
 - CULVERT
 - DROP INLET
 - DRAIN LINE
 - COMM. LINE
 - MANHOLE
 - ELECTRICAL MANHOLE
 - GAS MANHOLE
 - SEWER MANHOLE
 - TELEPHONE MANHOLE
 - TRAFFIC MANHOLE
 - WATER MANHOLE
 - UTILITY POLE
 - UTILITY BOX
 - UTILITY CLEANOUT
 - UTILITY INTERSECT
 - UTILITY METER
 - UTILITY FICTITIOUS
 - UTILITY VALVE
 - FIRE HYDRANT
 - LIGHT STANDARD
 - TRAPPING LIGHT
 - ARCHBAR
 - SIGN
 - MISCELLANEOUS
 - RESIDENTIAL BUILDING
 - TREE
 - BUSH
 - HEDGE
 - FENCE



DOHARD
REGISTERED PROFESSIONAL LAND SURVEYOR

BPM
CORPORATION
A Professional Land Surveying Company
CITY OF KENNER
ATTORNEY: PAMEL, LOUISIANA

SURVEY OF ARPENT LOTS 255, 256, 257, 258 & 265 AND PORTIONS OF ARPENT LOTS 211, 212, 226, 227, 228, 229, 230, 231, 232, 233, 234, 259 & 264, CITY OF KENNER, JEFFERSON PARISH, LA.

PREPARED IN ACCORDANCE WITH THE LATEST AMERICAN STANDARDS FOR PROPERTY BOUNDARY SURVEYS FOR A CLASS OF SURVEY MADE AT THE REQUEST OF: PERK DOOR COMPANY

NO.	DESCRIPTION	DATE	BY

SCALE: 1" = 60'

DATE: APRIL 19, 1995

DRAWN BY: R.W.K. CHECKED BY: E.W.P.

DRAWING NO.: F-2099

COMPIETER NO.: F004-082

SHEET: 2 OF 2

The Servitudes and Realizations shown on this survey are limited to those set forth in the description furnished as and there is no representation that all applicable Servitudes and Realizations are shown herein. The surveyor has made no title search or public record search in compiling the data for this survey.

I have consulted the Federal Insurance Administration Flood Hazard Map(s) and found this property to be in a Special Flood Hazard Area.

F. I. A. ZONE "AE"
BASE ELEV. 4.0' AND 4.0' NAVD