



## Property Highlights:

- 13.06 Acres on Hwy 108 E & Chester Portie Rd West of the River in Calcasieu Parish
- Land is vacant and ready for development.
- Zoned I-1 Light Industrial
- Flood Zone X
- 2 miles from Interstate 10 with Interstate access
- 1.5 miles from the Citgo Refinery

**Austin Lolan**

225.237.3343 | [alolan@beaubox.com](mailto:alolan@beaubox.com)

5500 Bankers Avenue, Baton Rouge, LA. 70808 | 225.237.3343 | [www.beaubox.com](http://www.beaubox.com)

Broker of Record, Beau J. Box; Licensed by the Louisiana Real Estate Commission, Mississippi Real Estate Commission, and Alabama Real Estate Commission, USA. This information has been secured from sources we believe to be reliable, but we make no representations or warranties, expressed or implied, as to the accuracy of the information. References to square footage or age are approximate. Buyer must verify the information and bears all risk for any inaccuracies.

© Beau Box Commercial Real Estate. December 21, 2021 11:25 AM



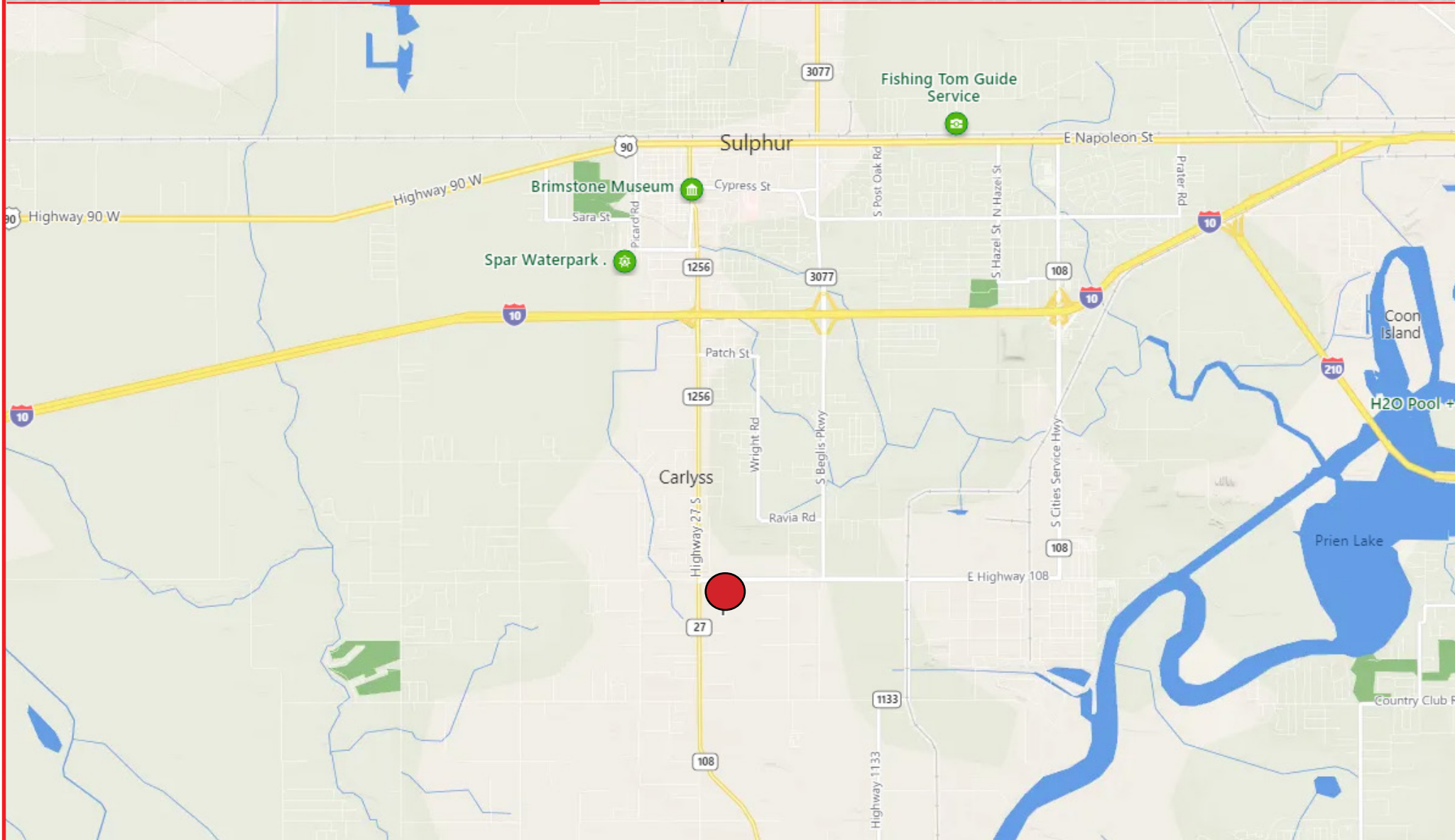
# Vacant Land For Sale

E Hwy 108, Sulphur, LA 70665

Overview

Location

Map



Austin Lolan

225.237.3343 | [alolan@beaubox.com](mailto:alolan@beaubox.com)

5500 Bankers Avenue, Baton Rouge, LA. 70808 | 225.237.3343 | [www.beaubox.com](http://www.beaubox.com)

Broker of Record, Beau J. Box; Licensed by the Louisiana Real Estate Commission, Mississippi Real Estate Commission, and Alabama Real Estate Commission, USA. This information has been secured from sources we believe to be reliable, but we make no representations or warranties, expressed or implied, as to the accuracy of the information. References to square footage or age are approximate. Buyer must verify the information and bears all risk for any inaccuracies.

© Beau Box Commercial Real Estate. December 21, 2021 11:25 AM



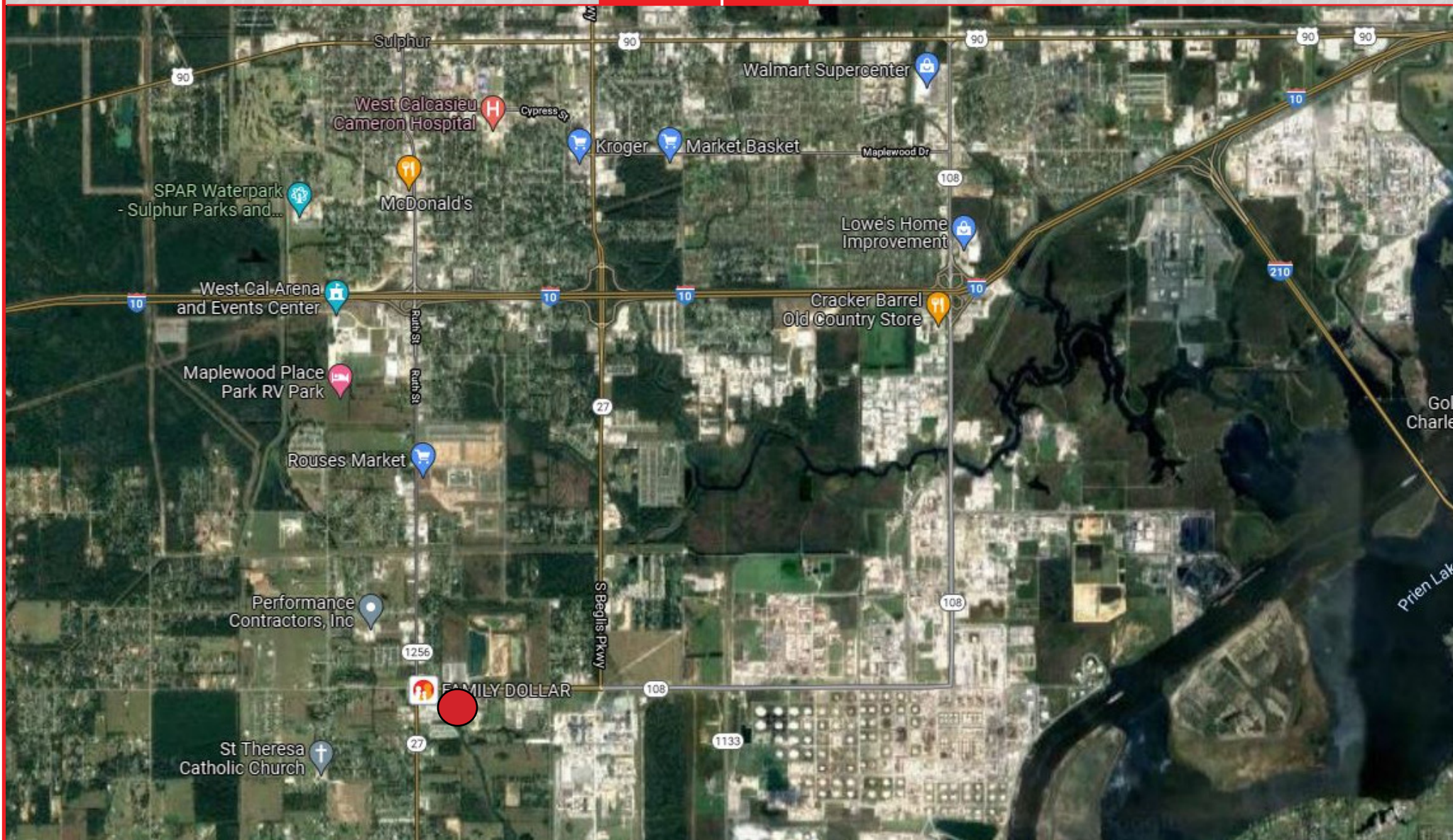
# Vacant Land For Sale

E Hwy 108, Sulphur, LA 70665

Overview

Location

Map



Austin Lolan

225.237.3343 | [alolan@beaubox.com](mailto:alolan@beaubox.com)

5500 Bankers Avenue, Baton Rouge, LA. 70808 | 225.237.3343 | [www.beaubox.com](http://www.beaubox.com)

Broker of Record, Beau J. Box; Licensed by the Louisiana Real Estate Commission, Mississippi Real Estate Commission, and Alabama Real Estate Commission, USA. This information has been secured from sources we believe to be reliable, but we make no representations or warranties, expressed or implied, as to the accuracy of the information. References to square footage or age are approximate. Buyer must verify the information and bears all risk for any inaccuracies.

© Beau Box Commercial Real Estate. December 21, 2021 11:25 AM



# Vacant Land For Sale

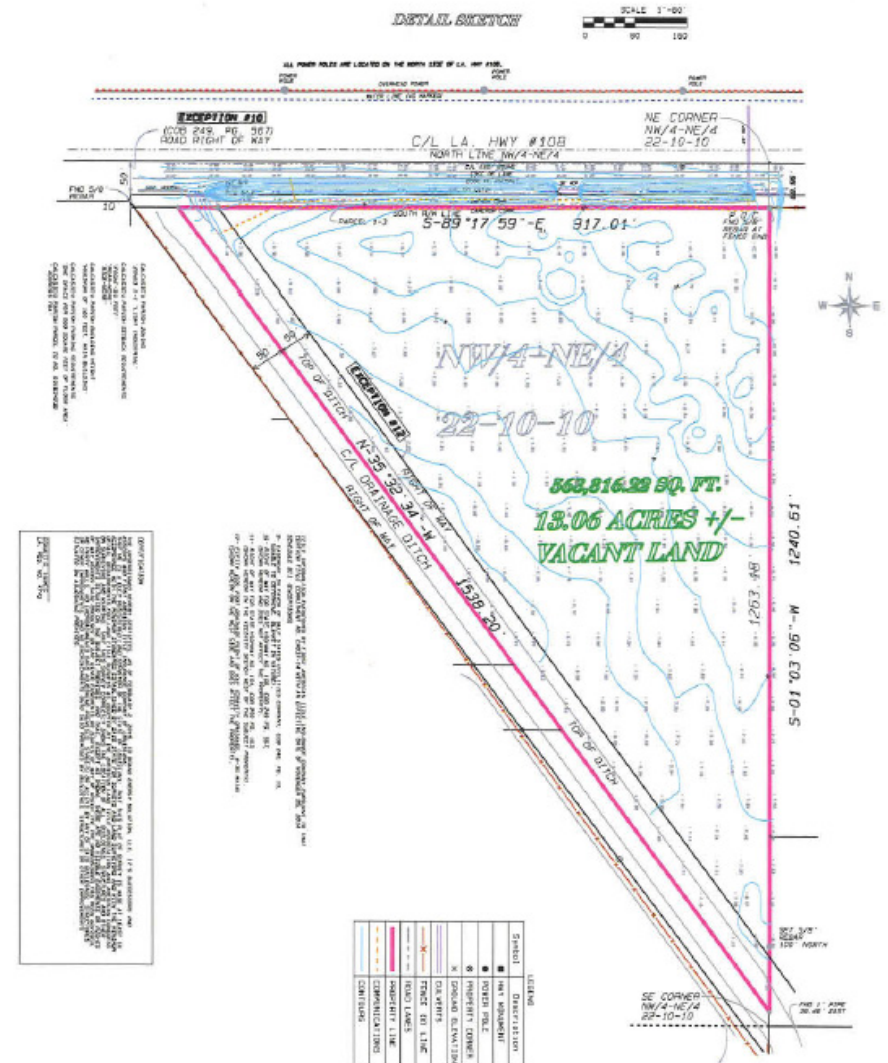
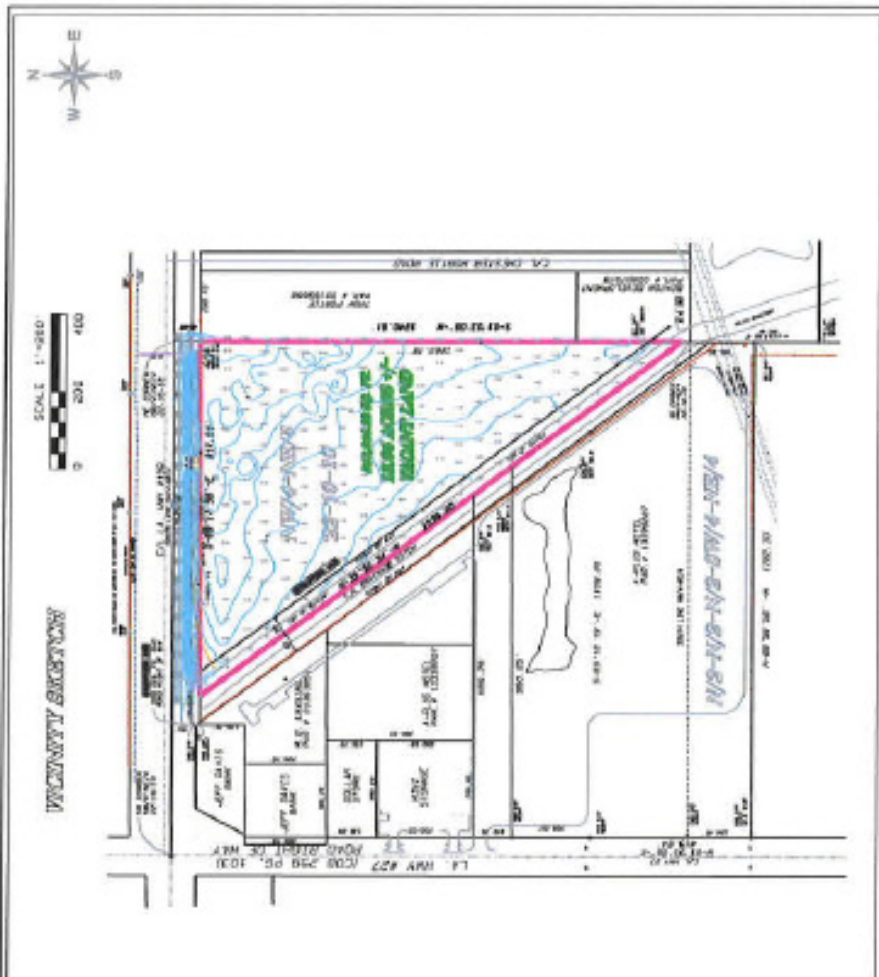
**E Hwy 108, Sulphur, LA 70665**

# Overview

## Location

## Map

# Survey



Austin Lolan

225.237.3343 | alolan@beaubox.com

5500 Bankers Avenue, Baton Rouge, LA. 70808 | 225.237.3343 | [www.beaubox.com](http://www.beaubox.com)

Broker of Record, Beau J. Box; Licensed by the Louisiana Real Estate Commission, Mississippi Real Estate Commission, and Alabama Real Estate Commission, USA. This information has been secured from sources we believe to be reliable, but we make no representations or warranties, expressed or implied, as to the accuracy of the information. References to square footage or age are approximate. Buyer must verify the information and bears all risk for any inaccuracies.

© Beau Box Commercial Real Estate. December 21, 2021 11:25 AM