



Offering Memorandum

Presented By:

NVST

REAL ESTATE SOLUTIONS

500 Kirby Street, Lake Charles, LA 70601
nvstrealestate.com
337.433.0511

MARY KAY HOPKINS, LLC

120 Dr. Michael DeBaKey Drive
Lake Charles, LA 70601 mkh.com
337.439.1079

For More Information:

Louie D. Barbe IV, CCIM
lbarbe@nvstrealestate.com
337.526.8404

Mary Kay Hopkins
mkh@mkh.com
337.526.8404

Licensed by the Louisiana Real Estate Commission

KANDY LANE DEVELOPMENT FOR SALE

Kandy Lane

6-38 Kandy Lane
Lake Charles, LA 70605



LOCATION DESCRIPTION

This income-producing property is in a prime location on W. Prien Lake Road, near Sale Road, Prien Lake Park and quick access to I-210 at Cove Lane.

It's proximity to the major retail corridor, the Casino Resorts and in the Prien Lake School District make this a very desirable residential and investment property location. In addition to Prien Lake Elementary, the property is also zoned for S.J. Welsh Middle and Barbe High School, while McNeese State University is within 4 miles. The Nelson Road retail corridor offers a variety of retail business, restaurants, and medical offices.

The 3.72-acre site includes 25 residential units along with the possibility of future expansion of more townhomes.

OFFERING SUMMARY

Sale Price:	\$3,400,000
Acres:	+/- 3.72
Construction Date:	2019
Number of Units:	25
(1) Triplex:	1 bed /1 bath
(1) Duplex:	3 bed /2.5 bath / 1 bed/ 1bath
(20) Townhomes	3 bed /2.5 bath

DEMOGRAPHICS	1 MILE	3 MILES	5 MILES
Total Households	1,714	14,451	33,218
Total Population	4,229	34,601	81,971
Average HH Income	\$119,024	\$108,577	\$91,984

NVST Real Estate Solutions, LLC

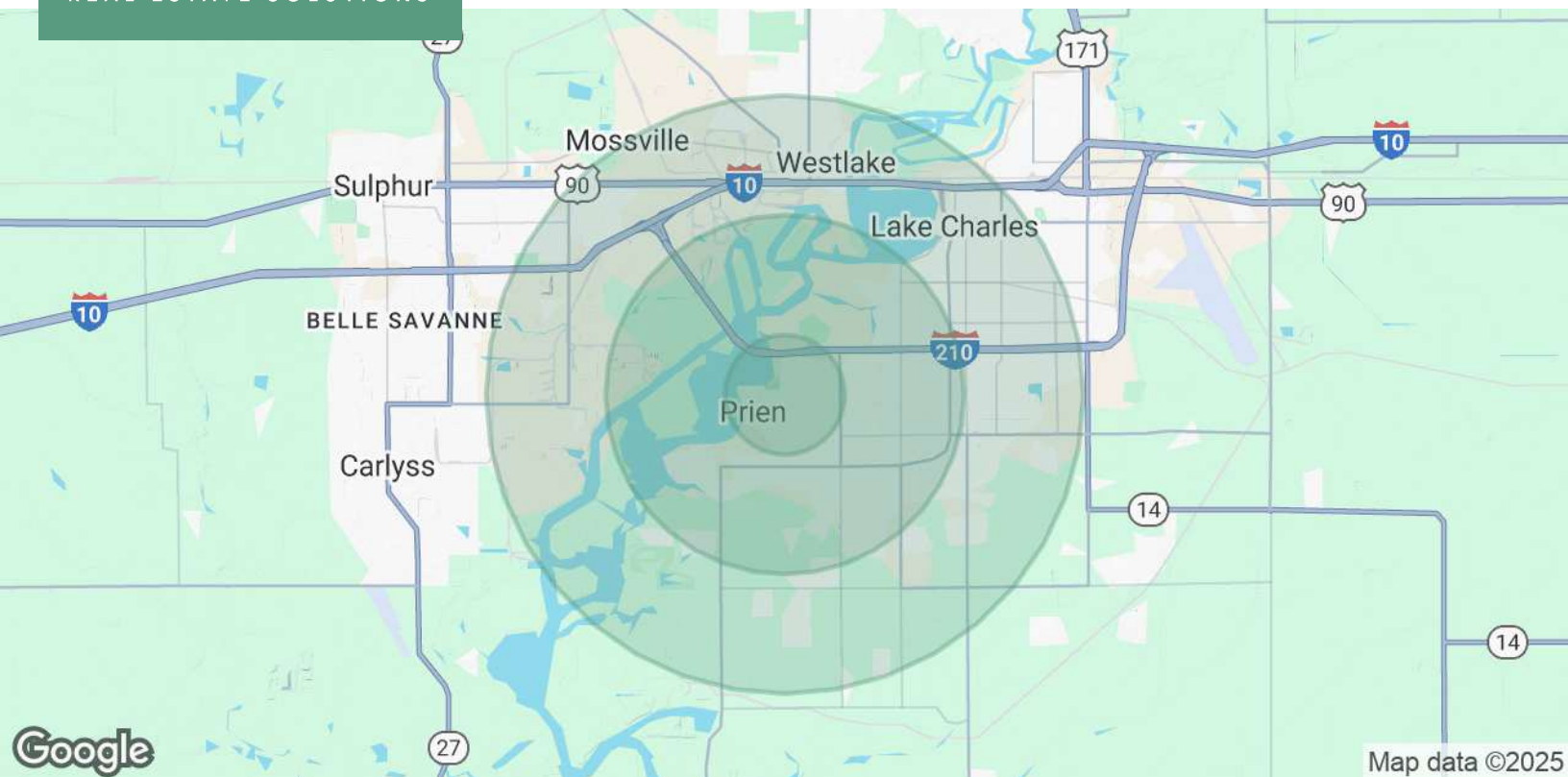
500 Kirby Street, Lake Charles, LA 70601

337.433.0511 | NVSTrealestate.com

Louie D. Barbe IV, CCIM

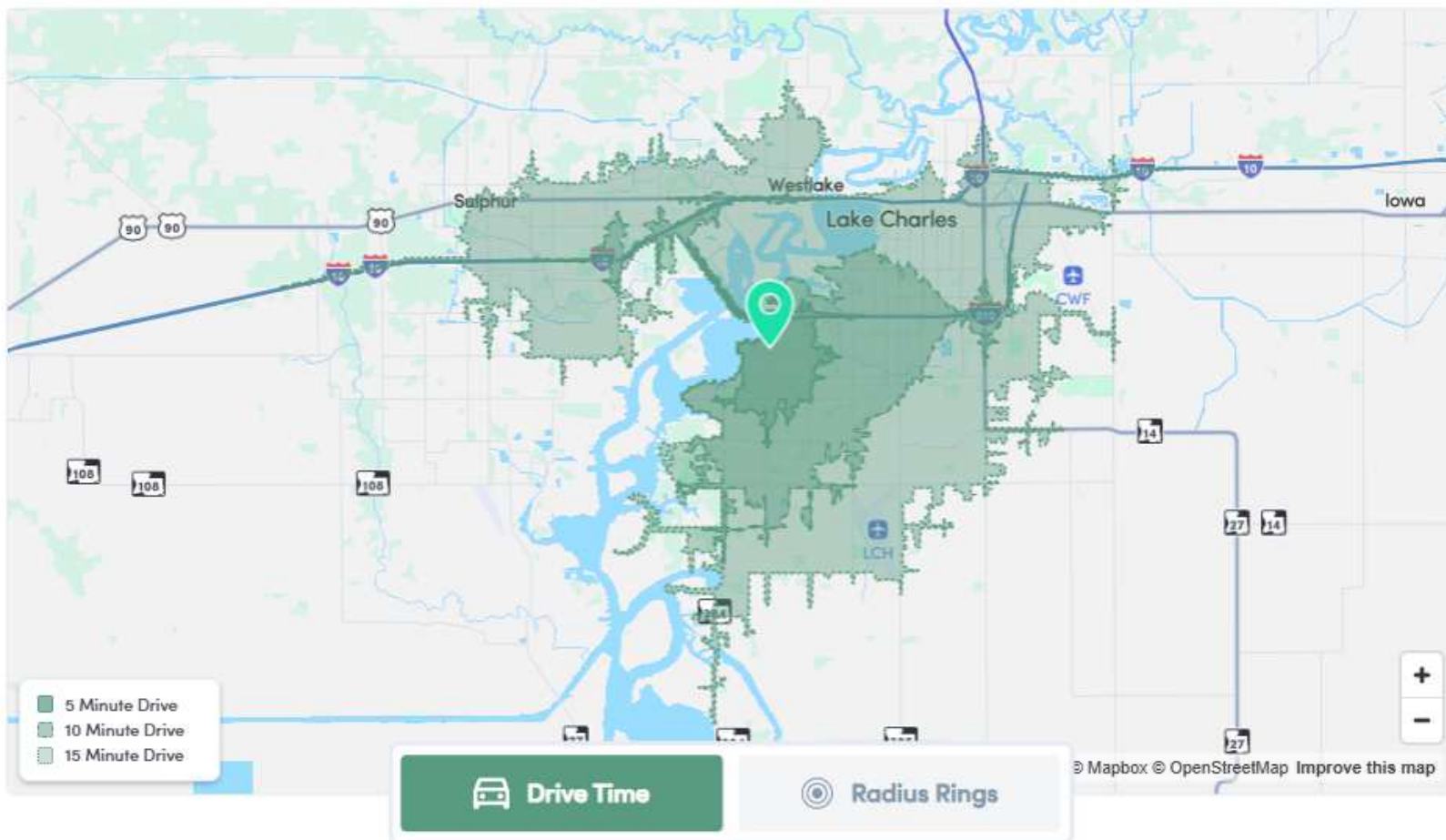
337.526.8404

lbarbe@nvstrealestate.com



POPULATION	1 MILE	3 MILES	5 MILES
Total Population	4,229	34,601	81,971
Average Age	43	40	39
Average Age (Male)	42	39	38
Average Age (Female)	44	41	40
HOUSEHOLDS & INCOME	1 MILE	3 MILES	5 MILES
Total Households	1,714	14,451	33,218
# of Persons per HH	2.5	2.4	2.5
Average HH Income	\$119,024	\$108,577	\$91,984
Average House Value	\$500,853	\$359,399	\$280,814

Demographics data derived from AlphaMap





NVST Real Estate Solutions, LLC

500 Kirby Street, Lake Charles, LA 70601

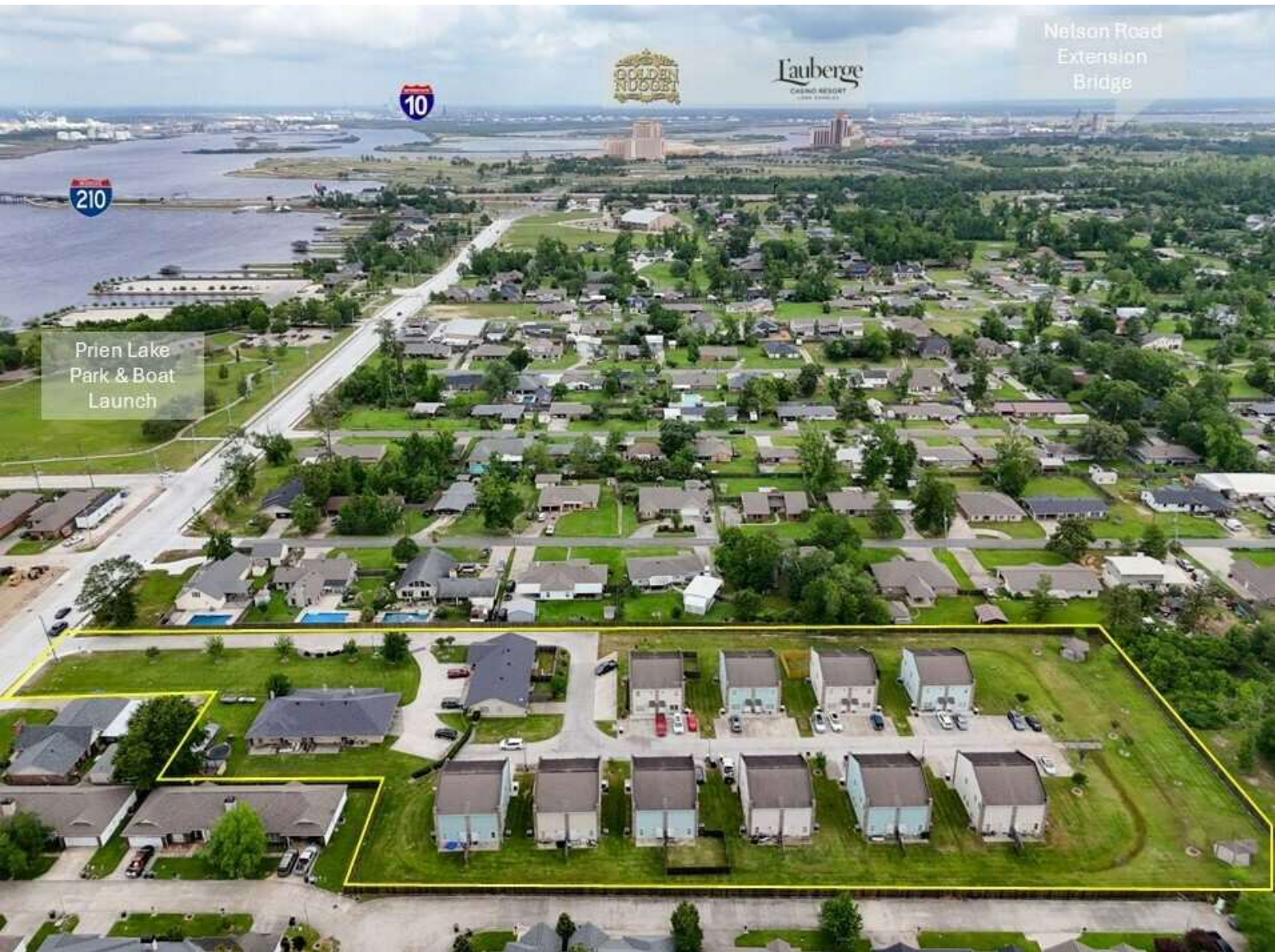
337.433.0511 | NVSTrealestate.com

Louie D. Barbe IV, CCIM

337.526.8404

lbarbe@nvstrealestate.com





NVST Real Estate Solutions, LLC
500 Kirby Street, Lake Charles, LA 70601
337.433.0511 | NVSTrealestate.com

Louie D. Barbe IV, CCIM
337.526.8404
lbarbe@nvstrealestate.com

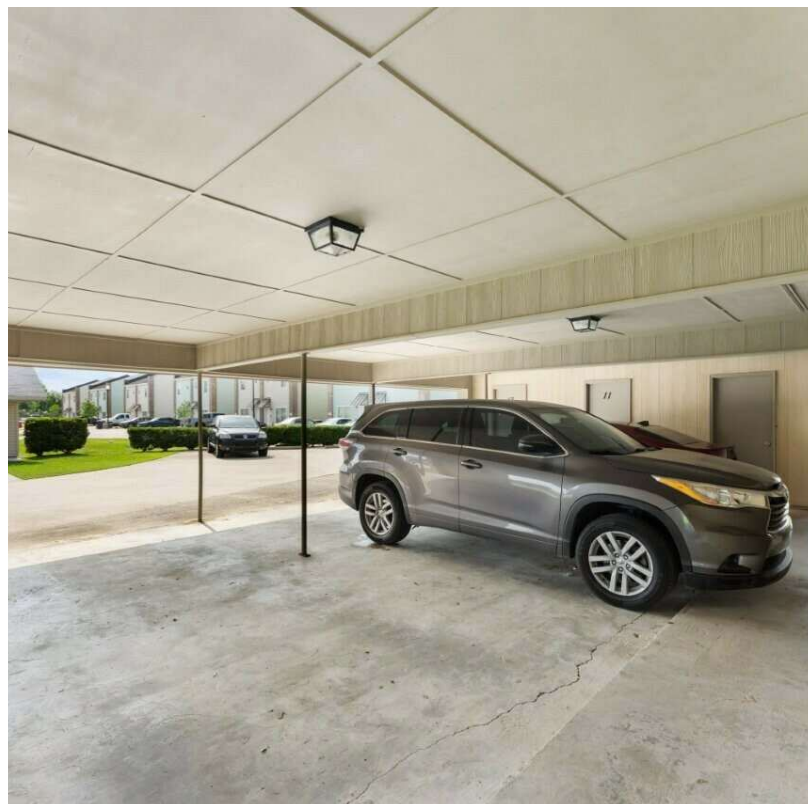
All information contained herein is from sources deemed reliable; however, no representation or warranty is made to the accuracy thereof.



NVST Real Estate Solutions, LLC
500 Kirby Street, Lake Charles, LA 70601
337.433.0511 | NVSTrealstate.com

Louie D. Barbe IV, CCIM
337.526.8404
lbarbe@nvstrealestate.com

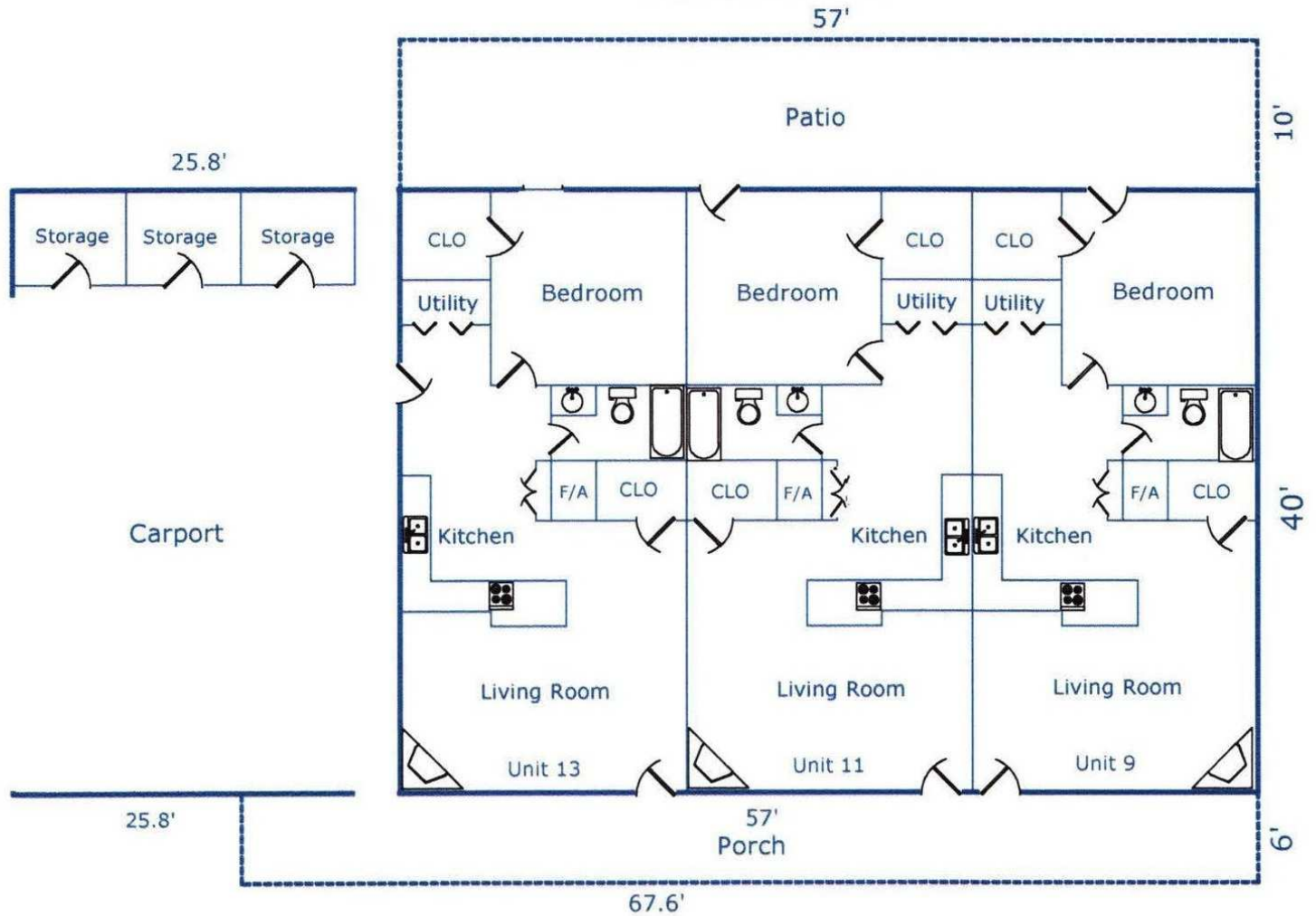
All information contained herein is from sources deemed reliable; however, no representation or warranty is made to the accuracy thereof.

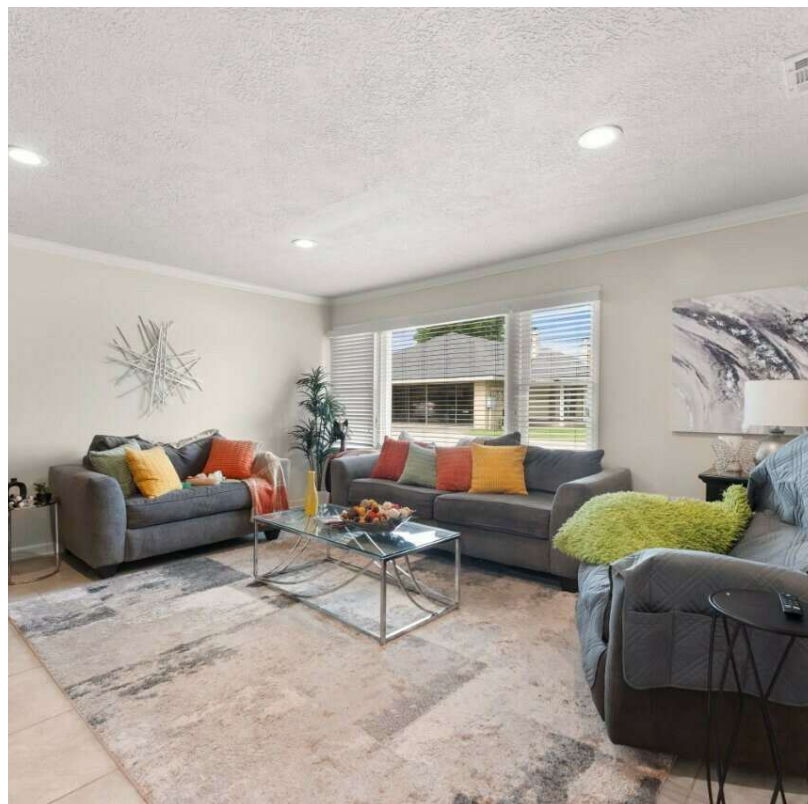


NVST Real Estate Solutions, LLC
500 Kirby Street, Lake Charles, LA 70601
337.433.0511 | NVSTrealestate.com

Louie D. Barbe IV, CCIM
337.526.8404
lbarbe@nvstrealestate.com

All information contained herein is from sources deemed reliable; however, no representation or warranty is made to the accuracy thereof.

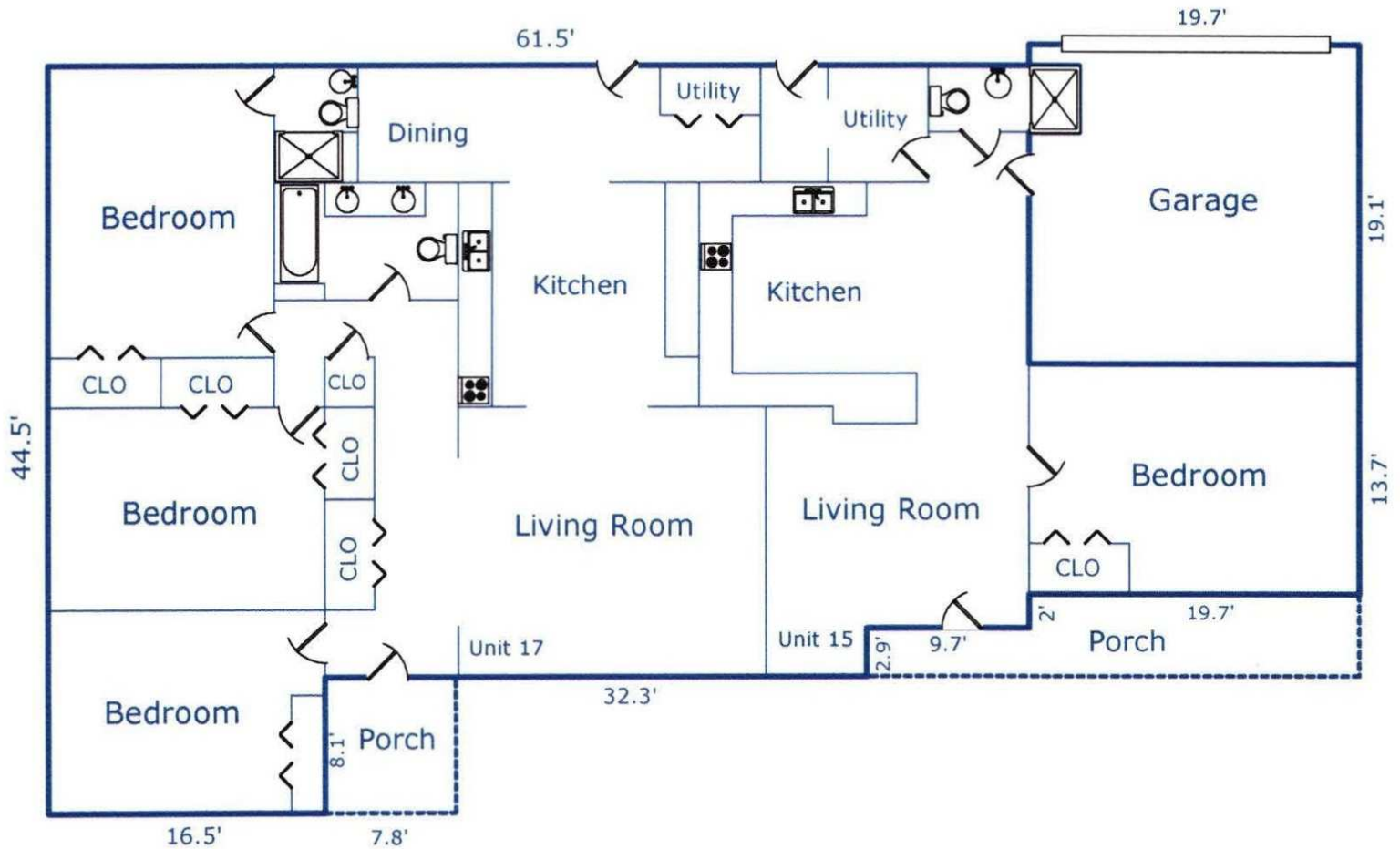


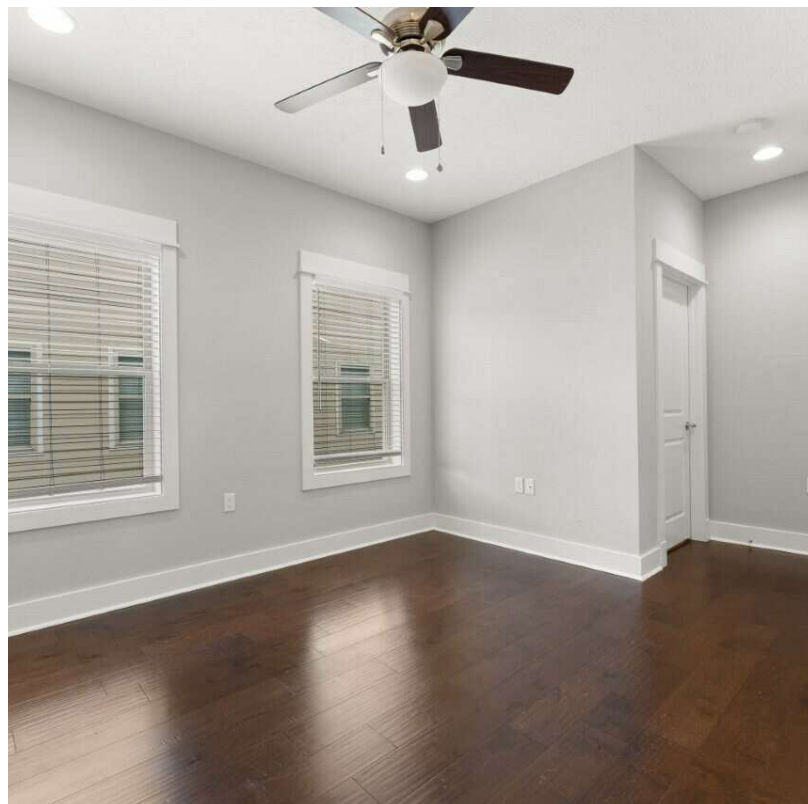


NVST Real Estate Solutions, LLC
500 Kirby Street, Lake Charles, LA 70601
337.433.0511 | NVSTrealestate.com

Louie D. Barbe IV, CCIM
337.526.8404
lbarbe@nvstrealestate.com

All information contained herein is from sources deemed reliable; however, no representation or warranty is made to the accuracy thereof.

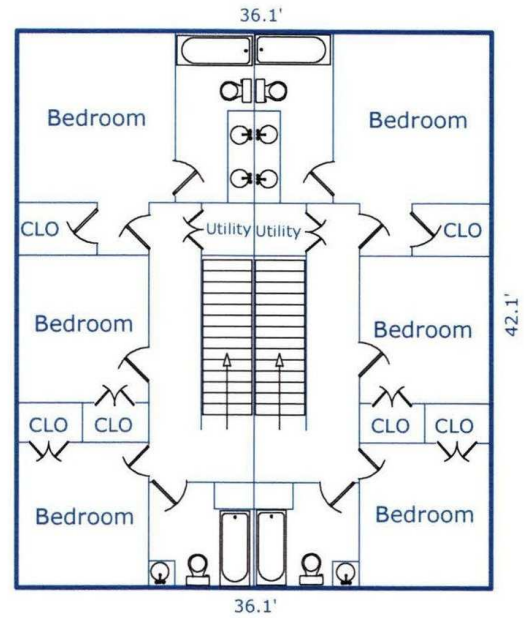
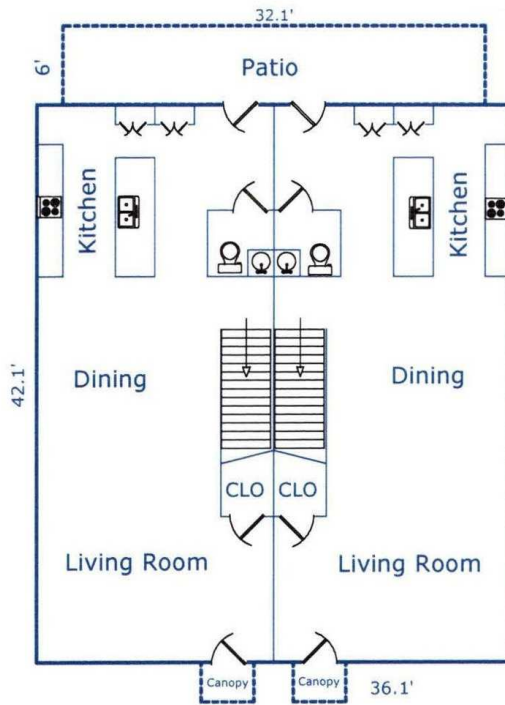




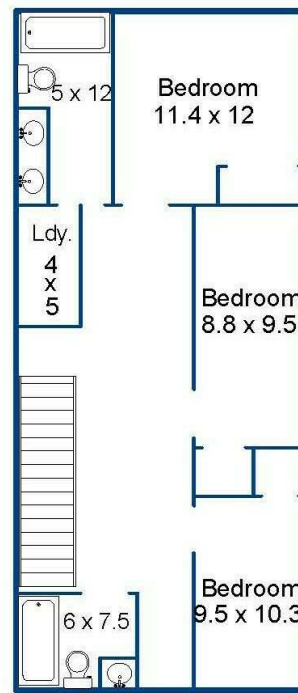
NVST Real Estate Solutions, LLC
500 Kirby Street, Lake Charles, LA 70601
337.433.0511 | NVSTrealestate.com

Louie D. Barbe IV, CCIM
337.526.8404
lbarbe@nvstrealestate.com

All information contained herein is from sources deemed reliable; however, no representation or warranty is made to the accuracy thereof.



First Floor



Second Floor