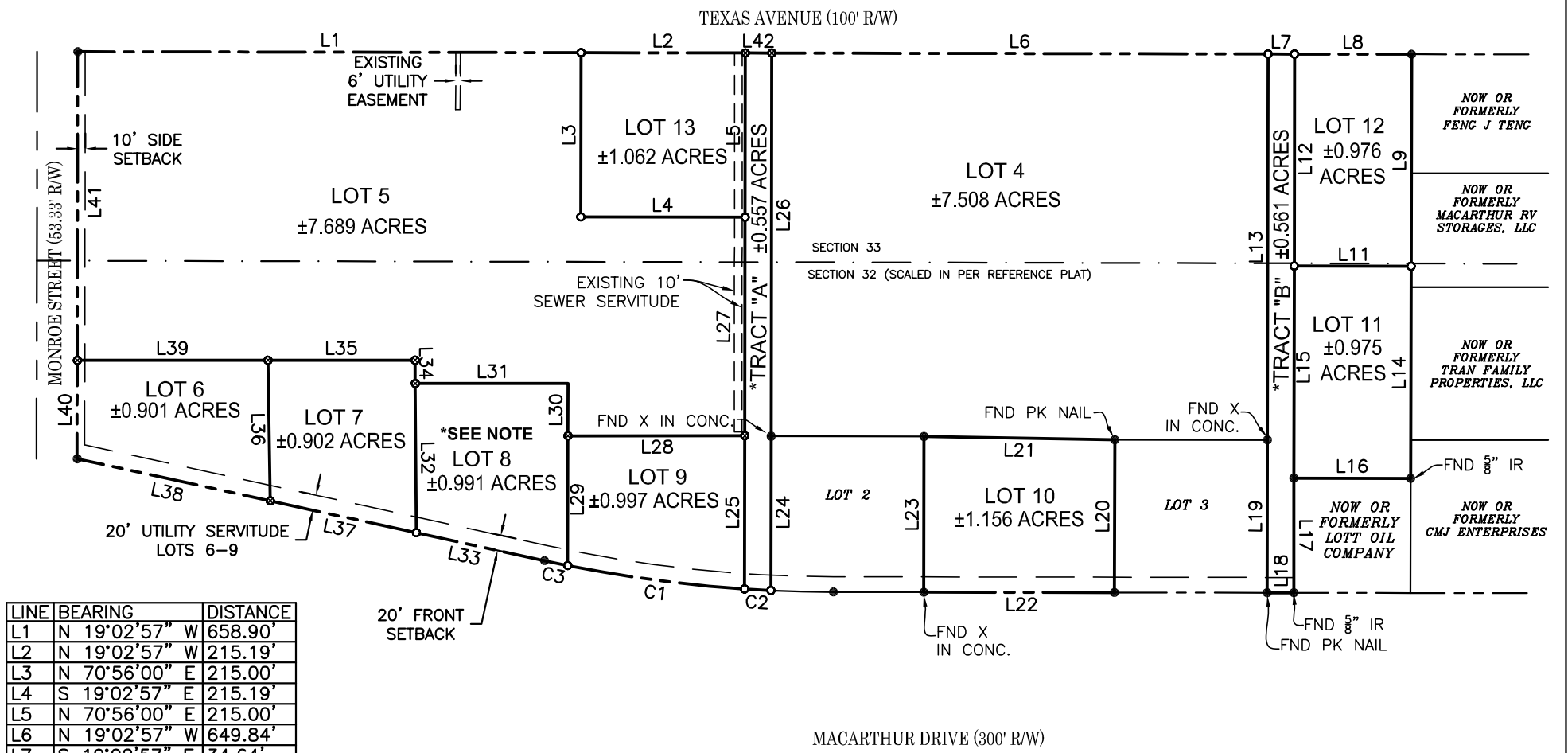


WESTGATE SC SUBDIVISION 2nd FILING

LOTS 4-13 & TRACTS "A" AND "B"
BEING A RE-SUBDIVISION OF LOT 1 WESTGATE SC SUBDIVISION, CITY OF ALEXANDRIA,
RAPIDES PARISH, LOUISIANA



LINE	BEARING	DISTANCE
L1	N 19°02'57" W	658.90'
L2	N 19°02'57" W	215.19'
L3	N 70°56'00" E	215.00'
L4	S 19°02'57" E	215.19'
L5	N 70°56'00" E	215.00'
L6	N 19°02'57" W	649.84'
L7	S 19°02'57" E	34.64'
L8	N 19°02'57" W	153.18'
L9	N 70°57'28" E	277.50'
L11	S 19°02'57" E	153.09'
L12	S 70°56'20" W	277.50'
L13	N 70°56'20" E	505.00'
L14	N 70°57'28" E	277.59'
L15	S 70°56'20" W	277.49'
L16	S 19°00'40" E	153.00'
L17	N 70°49'28" E	150.00'
L18	S 19°03'51" E	35.00'
L19	S 70°57'17" W	200.00'
L20	S 70°58'12" W	199.80'
L21	S 18°10'45" E	249.81'
L22	N 19°03'51" W	249.59'
L23	S 70°54'57" W	203.66'
L24	S 70°56'00" W	201.80'
L25	S 70°56'00" W	200.47'
L26	S 70°56'00" W	501.51'
L27	S 70°56'00" W	285.94'
L28	S 19°11'17" E	231.50'
L29	N 70°56'00" E	169.67'
L30	S 70°56'00" W	68.58'
L31	S 19°11'17" E	200.00'
L32	S 70°26'00" W	195.25'
L33	N 06°52'10" W	171.75'
L34	N 70°26'00" E	30.50'
L35	S 19°11'17" E	192.66'
L36	N 69°54'48" E	184.00'
L37	N 06°52'10" W	195.77'
L38	S 06°52'10" E	258.67'
L39	S 19°11'17" E	249.58'
L40	S 70°55'20" W	128.79'
L41	S 70°55'20" W	403.98'
L42	S 19°02'57" E	34.56'

CURVE	RADIUS	ARC LENGTH	CHORD LENGTH	CHORD BEARING	DELTA ANGLE
C1	1790.20'	233.64'	233.48'	S 11°36'30" E	7°28'40"
C2	1790.20'	34.61'	34.61'	N 15°54'04" W	1°06'28"
C3	1790.20'	31.06'	31.06'	N 07°22'21" W	0°59'39"

***LOT 8:**
ACCESS FOR LOT 8 SHALL BE FROM LOT 7 OR LOT 9

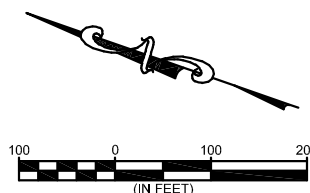
REFERENCE PLAT:
WESTGATE SC SUBDIVISION BY COLBY C. BULLER DATED
JANUARY 13, 2020.

BASIS OF BEARING:
GRID NORTH, LOUISIANA STATE PLANE COORDINATE SYSTEM,
NORTH ZONE, NAD 83.

GENERAL NOTE:
NO ATTEMPT HAS BEEN MADE BY MONCEAUX-BULLER &
ASSOCIATES, L.L.C., TO VERIFY TITLE, ACTUAL OWNERSHIPS,
SERVITUDES, EASEMENTS, RIGHTS-OF-WAY OR OTHER
BURDENS ON THE PROPERTY, OTHER THAN THAT FURNISHED
BY THE CLIENT OR HIS REPRESENTATIVE.

THIS SURVEY DOES NOT CONSTITUTE A WETLANDS
DETERMINATION, ENVIRONMENTAL SITE ASSESSMENT OR
SUB-SURFACE INVESTIGATION.

*TRACTS A & B ARE NOT BUILDING SITES AND WILL BE
DEDICATED AS PRIVATE ACCESS AND UTILITY SERVITUDES



- LEGEND:**
- FOUND 1/2" IRON ROD (UNLESS OTHERWISE NOTED)
 - FOUND CONCRETE MONUMENT
 - △ CALCULATED CORNER
 - SET 1/2" IRON ROD
 - SET "X" IN CONCRETE

DESIGNED:	CCB
DETAILED:	GLB
CHECKED:	CCB
PROJECT:	19-125
DATE:	05/12/20
FOR:	TCP-AUERBACH WESTGATE, LC
AT REQUEST:	DAVID THOMAS

M Monceaux & Associates, LLC civil engineers & land surveyors	610 Desoto Street Alexandria, LA 71301
	Tel: 318.442.8465 Fax: 318.442.8799