



## 1200 Gardere Ln

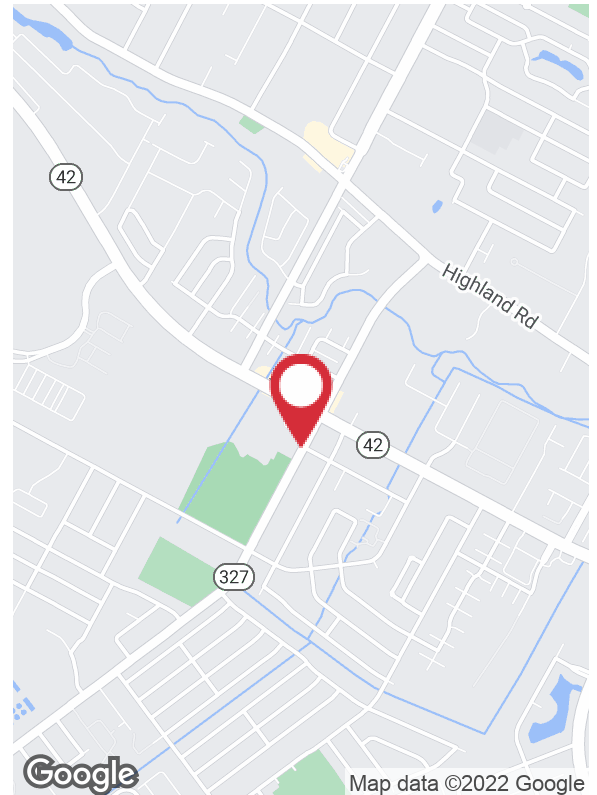
Baton Rouge, Louisiana 70820

### Property Highlights

- 1.43 acre development site located on Gardere Lane
- Just off the corner of heavily trafficked Burbank Drive (+25k cars per day).
- Located in a rapidly expanding area with +7,000 planned and existing homes within a 3-mile radius and more to come
- LC3 Zoning
- Adjacent to Traction Sports Performance (20k SF training facility, 10 baseball fields, Marucci Pro Shop)
- 250' of frontage on Gardere Lane

### Sale Price

\$1,245,816



For more information

**Andrew D'Ostilio, CCIM**

O: 225 295 0800 | C: 225 678 8851  
andrewdos@latterblum.com

**CALL OR EMAIL FOR MORE INFORMATION**

NO WARRANTY OR REPRESENTATION, EXPRESS OR IMPLIED, IS MADE AS TO THE ACCURACY OF THE INFORMATION CONTAINED HEREIN, AND THE SAME IS SUBMITTED SUBJECT TO ERRORS, OMISSIONS, CHANGE OF PRICE, RENTAL OR OTHER CONDITIONS, PRIOR SALE, LEASE OR FINANCING, OR WITHDRAWAL WITHOUT NOTICE, AND OF ANY SPECIAL LISTING CONDITIONS IMPOSED BY OUR PRINCIPALS NO WARRANTIES OR REPRESENTATIONS ARE MADE AS TO THE CONDITION OF THE PROPERTY OR ANY HAZARDS CONTAINED THEREIN ARE ANY TO BE IMPLIED. LICENSED IN LOUISIANA.

1700 City Farm Drive  
Baton Rouge, LA 70806  
225 295 0800 tel  
**latterblum.com**

June 08, 2022



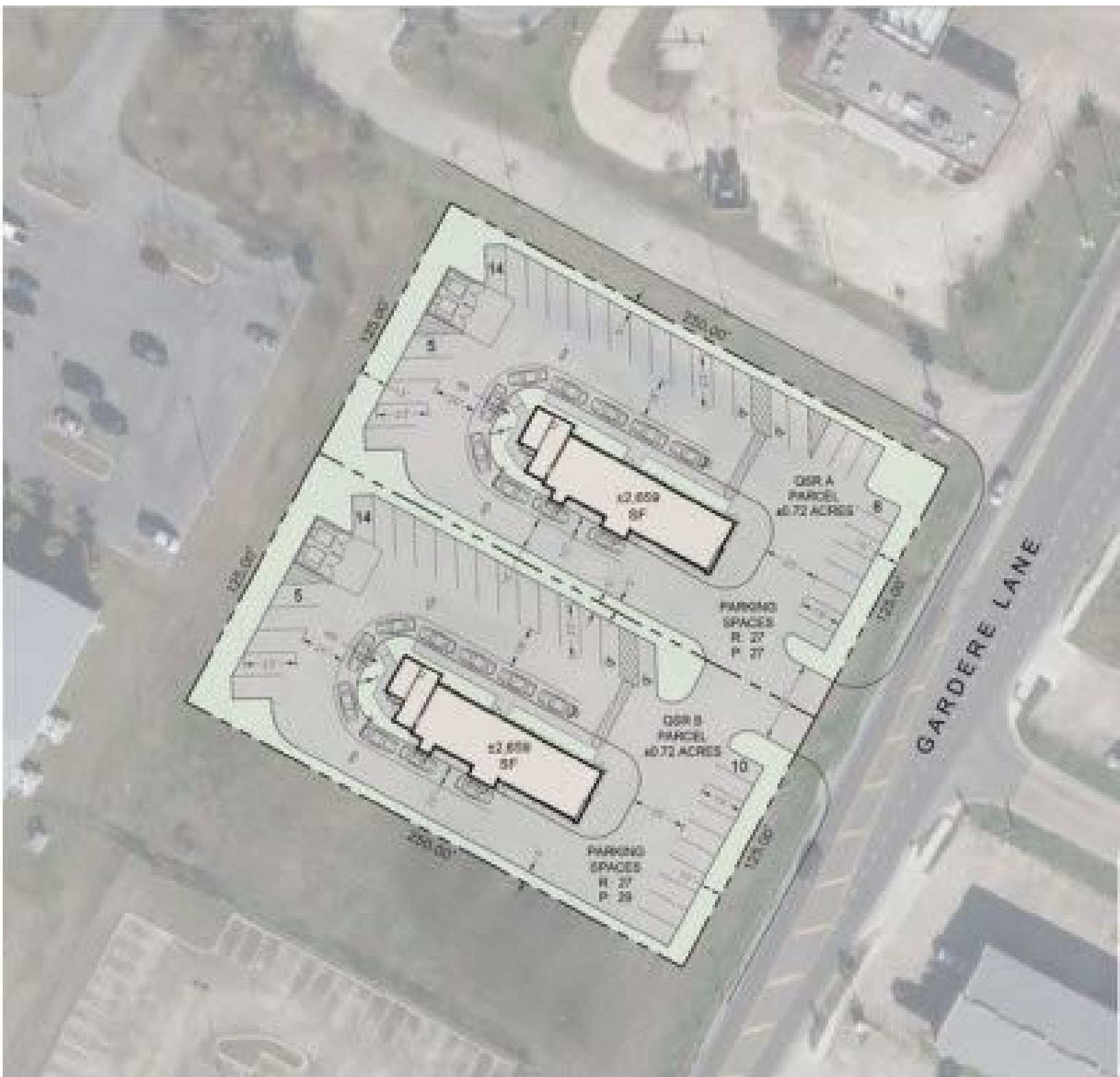
## Additional Photos



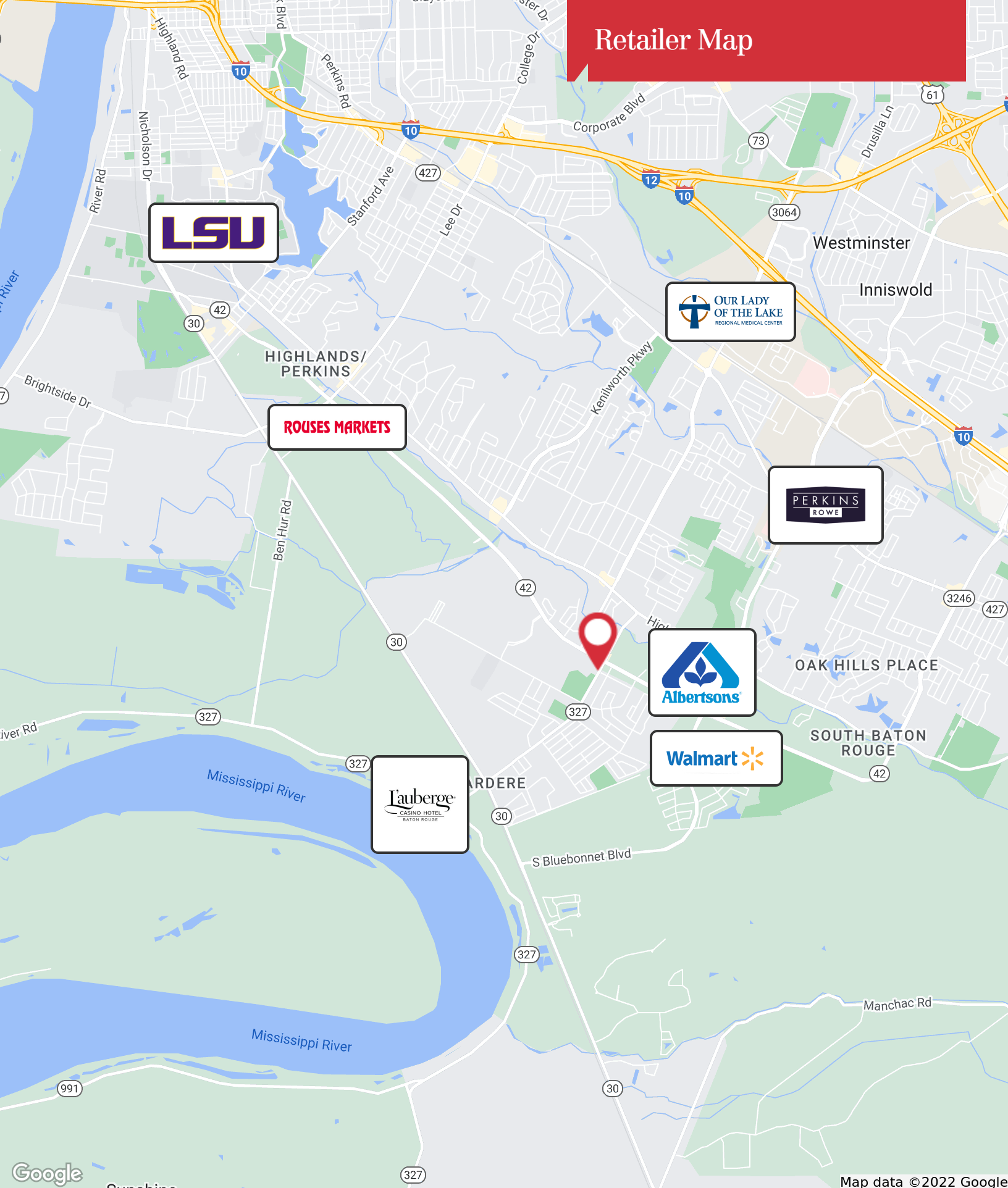
1700 City Farm Drive  
Baton Rouge, LA 70806  
225 295 0800 tel  
[latterblum.com](http://latterblum.com)



# Potential Site Plan



# Retailer Map



1700 City Farm Drive  
Baton Rouge, LA 70806  
225 295 0800 tel  
[latterblum.com](http://latterblum.com)

## KEY FACTS

19,525

Population

29.8

Median Age

2.7

Average Household Size

\$57,846

Median Household Income

## EDUCATION

8%

No High School Diploma



23%

High School Graduate



25%

Some College



44%

Bachelor's/Grad/Pr of Degree

## BUSINESS



481

Total Businesses



3,815

Total Employees

## EMPLOYMENT



64.8%

White Collar



18.4%

Blue Collar



16.8%

Services

5.6%

Unemployment Rate

## INCOME



\$57,846

Median Household Income



\$30,383

Per Capita Income



\$39,032

Median Net Worth

## Households By Income

The largest group: \$50,000 - \$74,999 (14.8%)

The smallest group: \$150,000 - \$199,999 (6.0%)

Indicator ▲	Value	Diff	
<\$15,000	13.1%	-1.1%	
\$15,000 - \$24,999	8.2%	-1.5%	
\$25,000 - \$34,999	13.0%	+3.5%	
\$35,000 - \$49,999	9.9%	-1.3%	
\$50,000 - \$74,999	14.8%	-2.0%	
\$75,000 - \$99,999	14.8%	+2.7%	
\$100,000 - \$149,999	13.8%	+1.0%	
\$150,000 - \$199,999	6.0%	-0.4%	
\$200,000+	6.4%	-0.8%	

Bars show deviation from

East Baton Rouge Parish

## KEY FACTS

84,740

Population

30.3

Median Age

2.3

Average Household Size

\$58,921

Median Household Income

## EDUCATION

5%

No High School Diploma



16%

High School Graduate



23%

Some College



56%

Bachelor's/Grad/Pr of Degree

## BUSINESS



4,402

Total Businesses



62,730

Total Employees

## EMPLOYMENT



73.5%

White Collar



12.0%

Blue Collar



14.5%

Services

5.2%

Unemployment Rate

## INCOME



\$58,921

Median Household Income



\$38,971

Per Capita Income



\$64,131

Median Net Worth

## Households By Income

The largest group: <\$15,000 (16.2%)

The smallest group: \$150,000 - \$199,999 (6.5%)

Indicator ▲	Value	Diff	
<\$15,000	16.2%	+2.0%	
\$15,000 - \$24,999	8.8%	-0.9%	
\$25,000 - \$34,999	9.4%	-0.1%	
\$35,000 - \$49,999	9.1%	-2.1%	
\$50,000 - \$74,999	14.7%	-2.1%	
\$75,000 - \$99,999	11.1%	-1.0%	
\$100,000 - \$149,999	13.4%	+0.6%	
\$150,000 - \$199,999	6.5%	+0.1%	
\$200,000+	10.7%	+3.5%	

Bars show deviation from East Baton Rouge Parish

## KEY FACTS

164,977

Population

32.9

Median Age

2.3

Average Household Size

\$61,116

Median Household Income

## EDUCATION

5%

No High School Diploma



18%

High School Graduate



24%

Some College



52%

Bachelor's/Grad/Pr of Degree

## BUSINESS



13,269

Total Businesses



172,529

Total Employees

## EMPLOYMENT



72.5%

White Collar



13.9%

Blue Collar



13.6%

Services

6.0%

Unemployment Rate

## INCOME



\$61,116

Median Household Income



\$40,068

Per Capita Income



\$76,416

Median Net Worth

## Households By Income

The largest group: \$50,000 - \$74,999 (16.0%)

The smallest group: \$150,000 - \$199,999 (7.5%)

Indicator ▲	Value	Diff		
<\$15,000	14.2%	0		
\$15,000 - \$24,999	8.6%	-1.1%		
\$25,000 - \$34,999	8.9%	-0.6%		
\$35,000 - \$49,999	9.7%	-1.5%		
\$50,000 - \$74,999	16.0%	-0.8%		
\$75,000 - \$99,999	11.4%	-0.7%		
\$100,000 - \$149,999	13.4%	+0.6%		
\$150,000 - \$199,999	7.5%	+1.1%		
\$200,000+	10.3%	+3.1%		

Bars show deviation from East Baton Rouge Parish

## Location Maps

