

Space Available

6250 East Texas Street

Bossier City, Louisiana

A 3-story, 78,495 sq/ft multi-tenant partnership facility designed to prioritize U.S. government security and support corporate and government partners of Louisiana Tech University with leading-edge technology and performance capabilities aligned to address emerging national security challenges. • Located within the 3,000-acre National Cyber Research Park in Bossier City, Louisiana.

The Louisiana Tech Research Institute offers secure and unsecure office space along with conference space to fit a variety of requirements ranging from a single meeting to a multi-day symposium. Consider this state-of-the-art facility for your next event in the Northwest Louisiana region.

Located within the 3,000-acre National Cyber Research Park in Bossier City, Louisiana

- Anchor: Cyber Innovation Center
- General Dynamics Information Technology
- Built to ICD 705 standards
- Controlled access
- On site security by Bossier City Police Department
- Adjacent to Barksdale Air Force Base home of:
 - Headquarters Air Force Global Strike Command
 - Headquarters Eighth Air Force
 - 2nd Bomb Wing (*active duty*)
 - 307th Bomb Wing (*USAF reserve*)

Raymond S. Alley, SIOR, MEM

318-208-3350

raymond@walkeralley.com

Ben W. Walker, III, CCIM

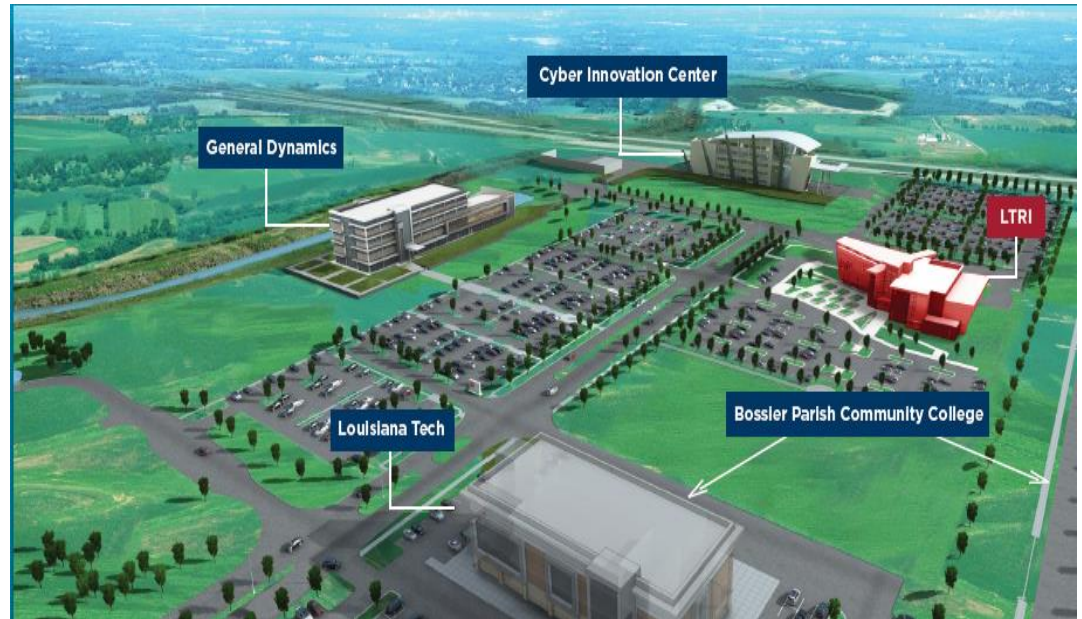
318-458-9552

ben@walkeralley.com



All information contained herein is believed to be accurate, but is not warranted and no liability of errors or omissions is assumed by either the owner or Walker-Alley & Associates, LLC and/or its agents or employees. August 2025



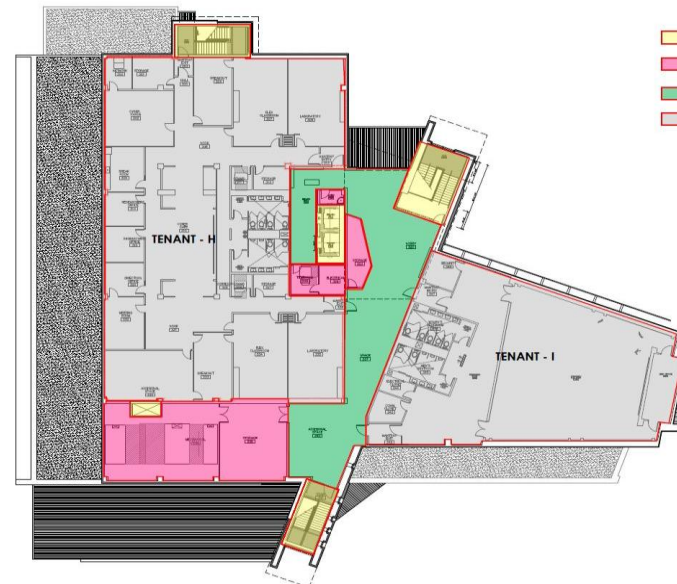




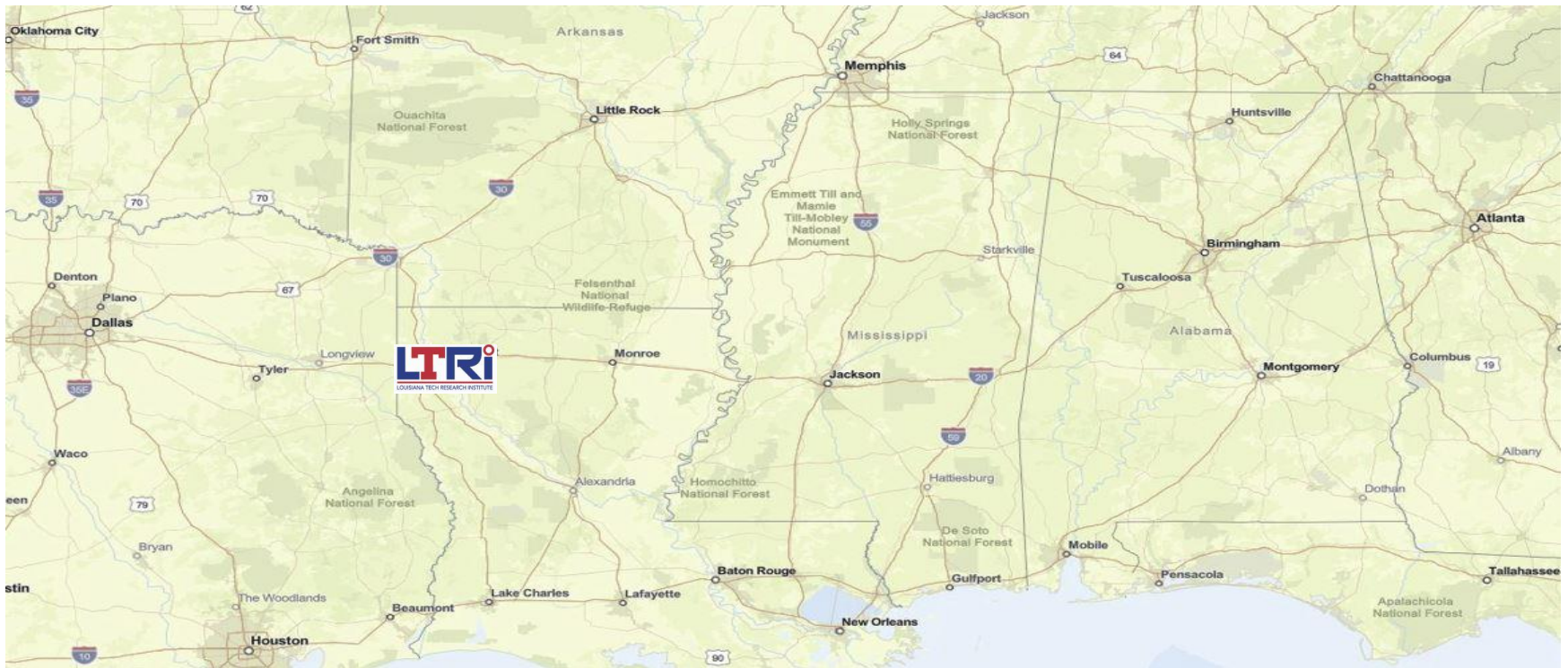
1ST FLOOR PLAN



2ND FLOOR PLAN



3RD FLOOR PLAN



Key Features & Facilities

Secure Research & Education Spaces

- Purpose-built to support **sensitive research**, with areas configurable as secured areas pending accreditation by tenants
- Designed to serve interdisciplinary missions in national security, cyber resilience, nuclear deterrence, and strategic technology development

Instructional & Simulation Environments

- On-site, **large classrooms and auditoriums** accommodate between 50 and 191 attendees each.
- **Cyber Range and Red/Blue team simulation areas** for immersive, scenario-driven training and research

Labs, Collaboration & Event Spaces

- Multiple **applied research laboratories** are equipped for advanced technical and policy work targeting national defense frameworks.
- Flexible **event space**, in an open, well-lit layout, ideal for conferences, briefings, and partner meetings

Anchored by proximity to **Air Force Global Strike Command**, the institute fosters seamless partnerships between **industry, academia, and federal defense agencies**.

Integral to the **I-20 Cyber Corridor** strategy, the LTRI building contributes to workforce development, innovation, commercialization, and high-tech economic growth across the region.