



## SHREVEPORT DEVELOPMENT OPPORTUNITY

# 4± ACRES LAND FOR SALE OR BUILD TO SUIT

OBIE ST. AT MILLICENT WAY, SHREVEPORT, LA 71115



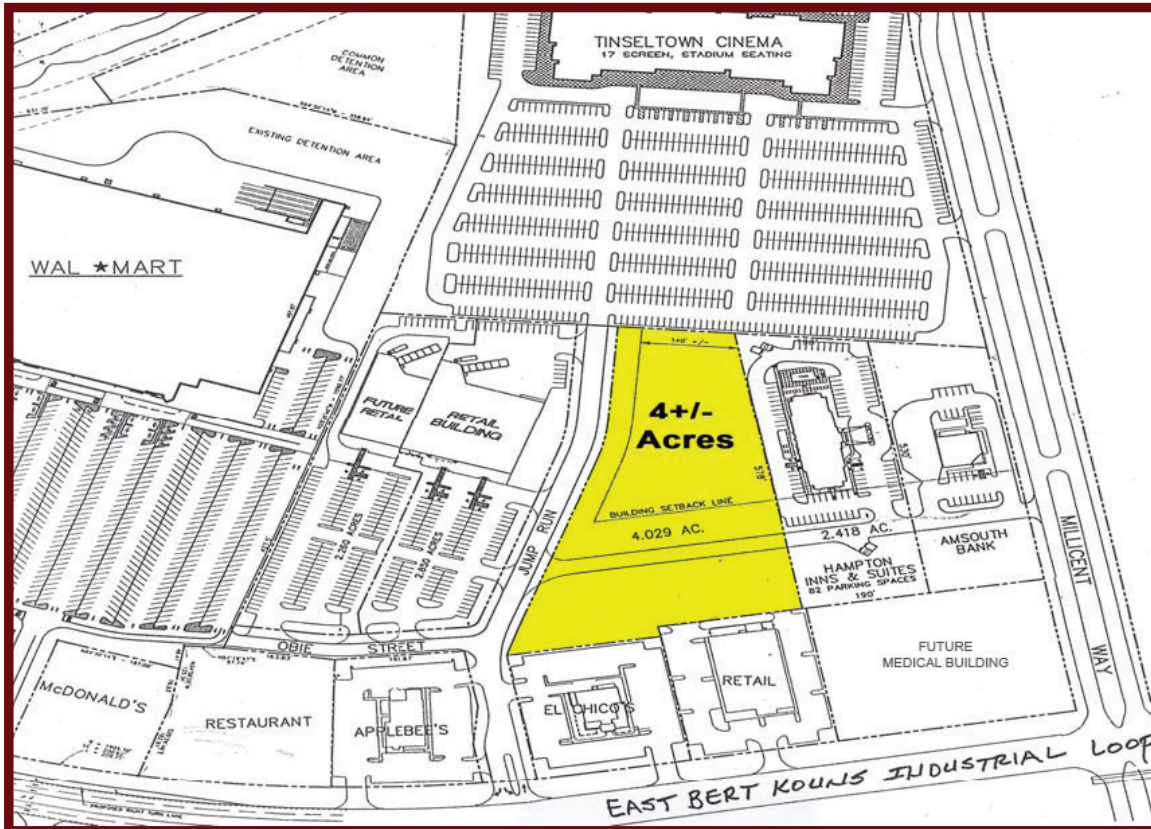
David Alexander | G. Archer Frierson | 318-222-2244  
dalex@vintagerealty.com | gfrierson@vintagerealty.com



# 4 ACRES FOR SALE

# OBIE ST. @ MILLICENT WAY

SHREVEPORT, LA 71115



- ASKING PRICE: \$12.00 P.S.F.
- GREAT SOUTHEAST SHREVEPORT LOCATION
- TRAFFIC COUNT AT MILLICENT & BERT KOUNS: 52,287 CARS DAILY
- 4+/- ACRES AVAILABLE
- WILL SUB-DIVIDE
- ZONED B-3
- PROPERTY LOCATED IN FRONT OF TINSELTOWN
- FOR SALE OR BUILD-TO-SUIT OPPORTUNITY



For more information, contact:

**David Alexander • G. Archer Frierson III, CCIM • 318-222-2244**  
**dalex@vintagerealty.com • gfrierson@vintagerealty.com • vintagerealty.com**

ALL INFORMATION CONTAINED HEREIN IS BELIEVED TO BE ACCURATE, BUT IS NOT WARRANTED AND NO LIABILITY OF ERRORS OR OMISSIONS IS ASSURED BY EITHER THE PROPERTY OWNER OR VINTAGE REALTY COMPANY OR ITS AGENTS AND EMPLOYEES. PRICES AS STATED HEREIN AND PRODUCT AVAILABILITY IS SUBJECT TO CHANGE AND/OR SALE OR LEASE WITHOUT PRIOR NOTICE, AND ALL SIZES AND DIMENSIONS ARE SUBJECT TO CORRECTION. 8/2015



# 4 ACRES FOR SALE

# OBIE ST. @ MILLICENT WAY

SHREVEPORT, LA 71115

## 2015 DEMOGRAPHICS

	Population	Avg HH Income	Households
1 mi	8,335	\$71,949	3,987
3 mi	46,138	\$81,838	20,566
5 mi	133,323	\$69,008	54,752



For more information, contact:

David Alexander • G. Archer Frierson III, CCIM • 318-222-2244  
 dalex@vintagerealty.com • gfrierson@vintagerealty.com • vintagerealty.com

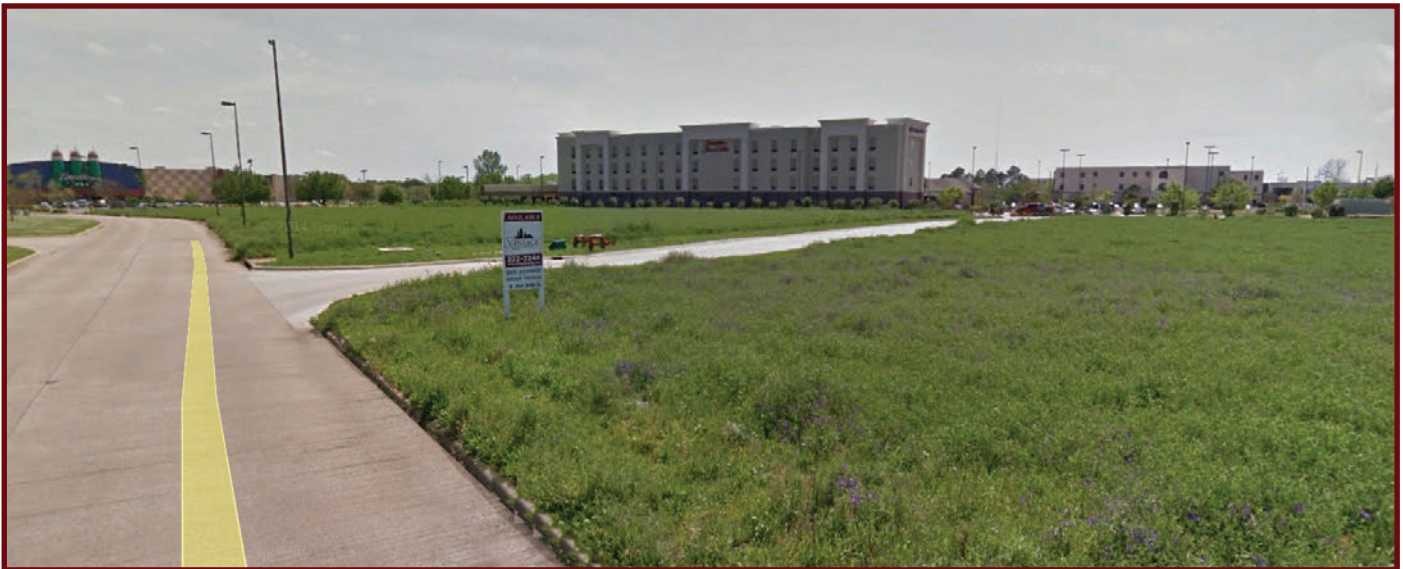
ALL INFORMATION CONTAINED HEREIN IS BELIEVED TO BE ACCURATE, BUT IS NOT WARRANTED AND NO LIABILITY OF ERRORS OR OMISSIONS IS ASSURED BY EITHER THE PROPERTY OWNER OR VINTAGE REALTY COMPANY OR ITS AGENTS AND EMPLOYEES. PRICES AS STATED HEREIN AND PRODUCT AVAILABILITY IS SUBJECT TO CHANGE AND/OR SALE OR LEASE WITHOUT PRIOR NOTICE, AND ALL SIZES AND DIMENSIONS ARE SUBJECT TO CORRECTION. 8/2015



# 4 ACRES FOR SALE

# OBIE ST. @ MILLICENT WAY

SHREVEPORT, LA 71115



For more information, contact:

**David Alexander • G. Archer Frierson III, CCIM • 318-222-2244**  
**dalex@vintagerealty.com • gfrierson@vintagerealty.com • vintagerealty.com**

ALL INFORMATION CONTAINED HEREIN IS BELIEVED TO BE ACCURATE, BUT IS NOT WARRANTED AND NO LIABILITY OF ERRORS OR OMISSIONS IS ASSURED BY EITHER THE PROPERTY OWNER OR VINTAGE REALTY COMPANY OR ITS AGENTS AND EMPLOYEES. PRICES AS STATED HEREIN AND PRODUCT AVAILABILITY IS SUBJECT TO CHANGE AND/OR SALE OR LEASE WITHOUT PRIOR NOTICE, AND ALL SIZES AND DIMENSIONS ARE SUBJECT TO CORRECTION. 8/2015