



1747 O'Neal Lane

Baton Rouge, Louisiana 70816

Property Highlights

- Build-To-Suit on O'Neal Ln
- North of the Interstate 12 interchange
- Property is 0.69 acres with multiple points of cross access
- Near Ochsner Medical Center (150 beds), Walmart, Starbucks, and the future Go Store It Self Storage Facility
- +25k vehicles per day

Lease Rate

See Agent for Lease Terms



For more information

Andrew D'Ostilio

O: 225 295 0800 | C: 225 678 8851
andrewdos@latterblum.com

CALL OR EMAIL FOR MORE INFORMATION

NO WARRANTY OR REPRESENTATION, EXPRESS OR IMPLIED, IS MADE AS TO THE ACCURACY OF THE INFORMATION CONTAINED HEREIN, AND THE SAME IS SUBMITTED SUBJECT TO ERRORS, OMISSIONS, CHANGE OF PRICE, RENTAL OR OTHER CONDITIONS, PRIOR SALE, LEASE OR FINANCING, OR WITHDRAWAL WITHOUT NOTICE, AND OF ANY SPECIAL LISTING CONDITIONS IMPOSED BY OUR PRINCIPALS NO WARRANTIES OR REPRESENTATIONS ARE MADE AS TO THE CONDITION OF THE PROPERTY OR ANY HAZARDS CONTAINED THEREIN ARE ANY TO BE IMPLIED. LICENSED IN LOUISIANA.

1700 City Farm Drive
Baton Rouge, LA 70806
225 295 0800 tel
latterblum.com

August 05, 2021

Area Map

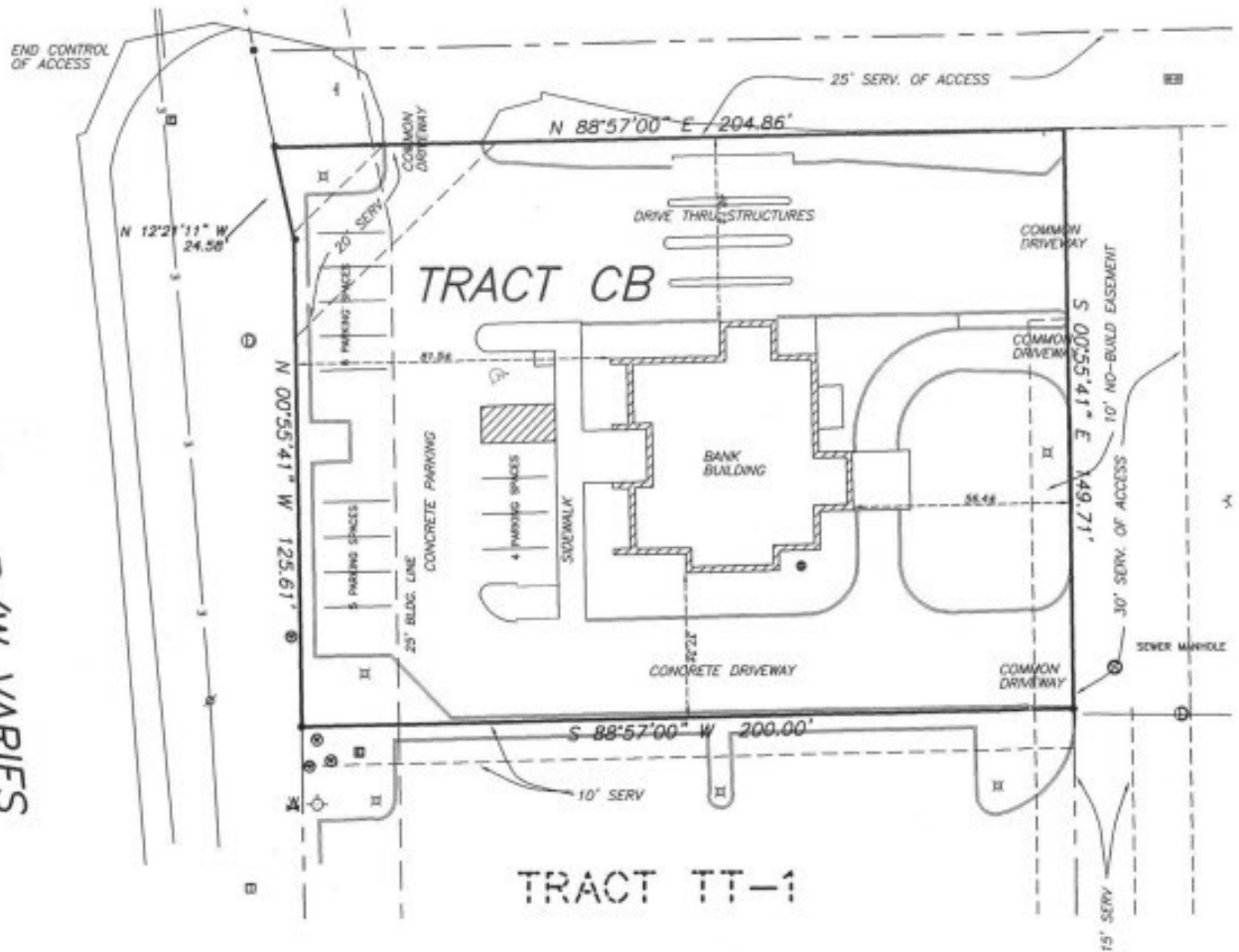


Area Map & Aerial





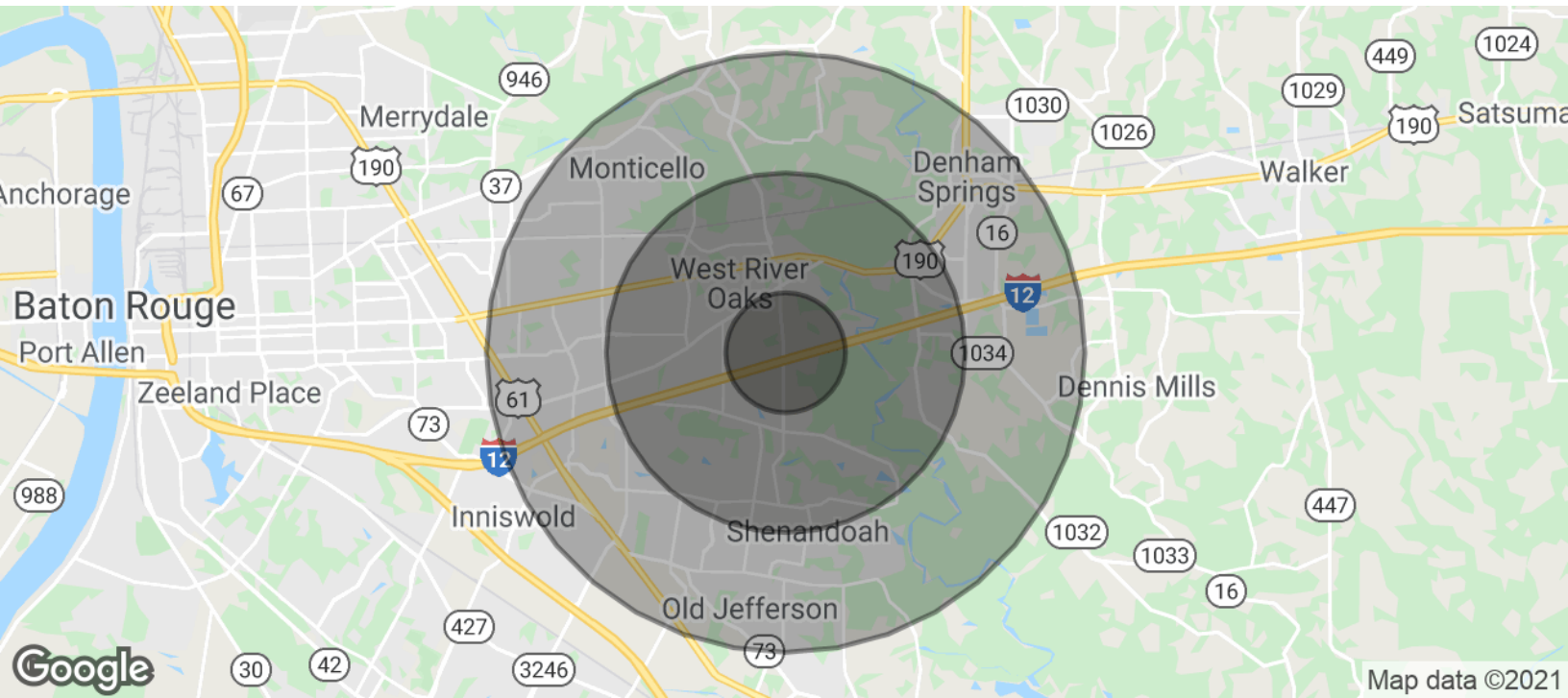
ONEAL LANE - R/W VARIES



For Lease

Build-To-Suit Property

3,000 SF | \$45.00 SF/yr



POPULATION

	1 MILE	3 MILES	5 MILES
Total Population	5,718	52,641	136,887
Average age	32.0	33.5	35.2
Average age (Male)	28.6	32.4	34.0
Average age (Female)	35.6	35.0	36.6

HOUSEHOLDS & INCOME

	1 MILE	3 MILES	5 MILES
Total households	2,246	20,284	53,414
# of persons per HH	2.5	2.6	2.6
Average HH income	\$67,818	\$69,554	\$68,843
Average house value	\$166,991	\$188,285	\$186,220

* Demographic data derived from 2010 US Census

Location Maps

