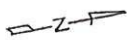
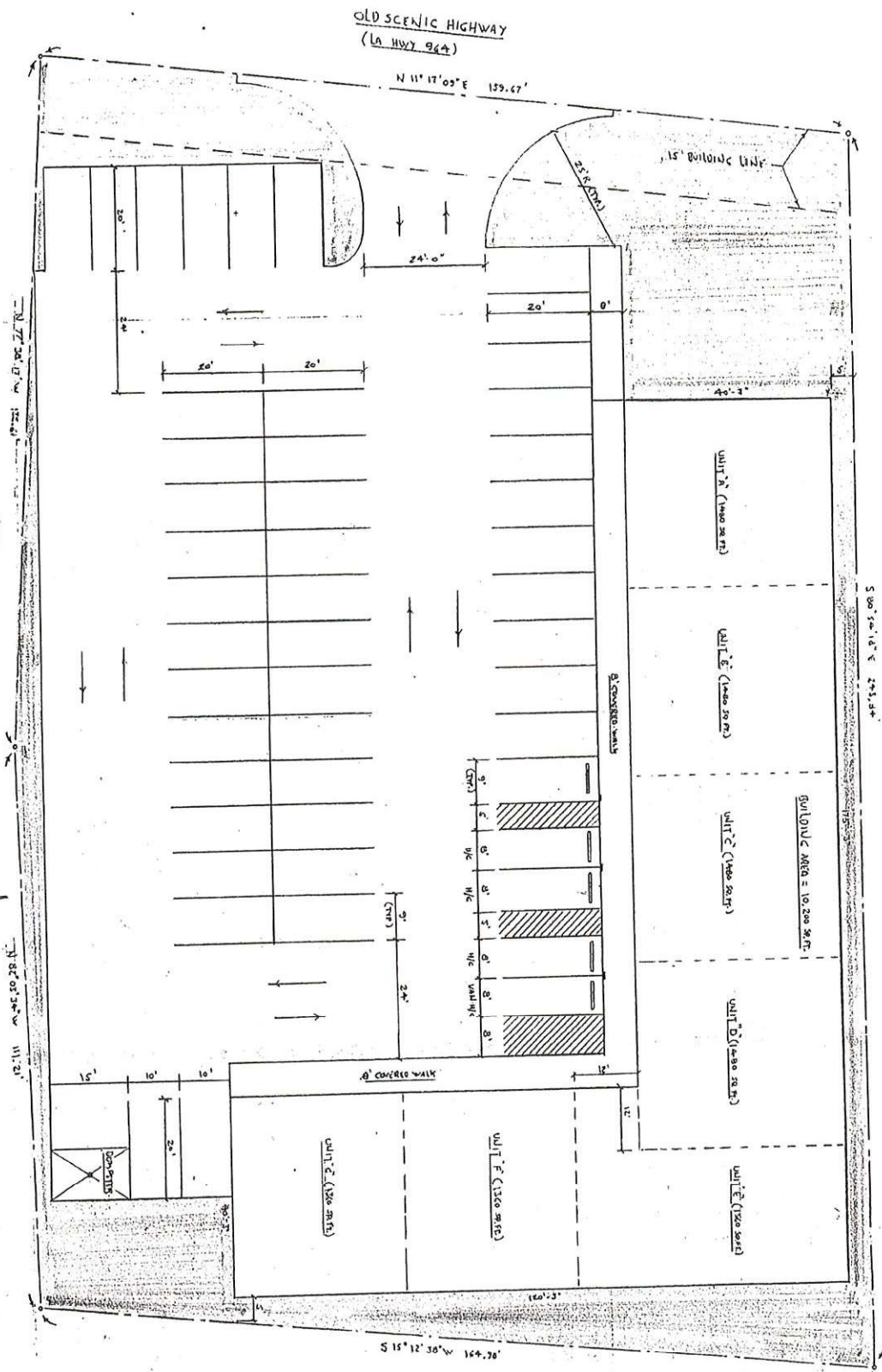


Original  
Development  
PLANS



BUILDING AND PARKING LAYOUT (SCALE 1"=10')



**REQUIRE PARKING**  
 CITY AREA = 10,200 SQ. FT.  
 NET AREA = 10,200 SQ. FT. x 90% = 9,180 SQ. FT.  
 REVENUE SPACES = 9180 / 208 = 44  
 PARKING PROVIDED  
 REVENUE 9 x 22' = 44  
 LAND USE = 1  
 PNL 48

BAKER AGENCY REAL ESTATE	
DATE: 7-23-05	SCALE: 1"=10'
PROPOSED BUILDING & PARKING LAYOUT	