

1820 St. Charles Avenue
Suite 211
New Orleans, LA 70130

FOR LEASE

OFFICE SPACE ON HISTORIC ST. CHARLES AVENUE



Bobby Talbot, CCIM

(504) 525-9763

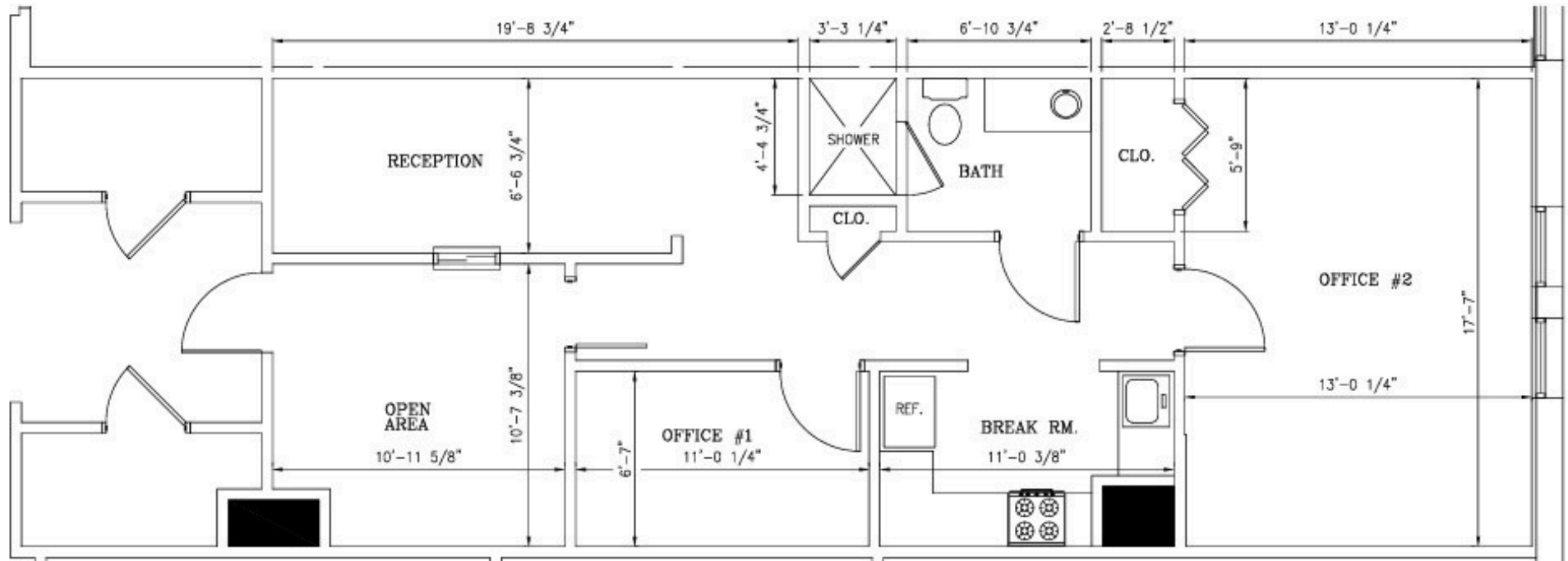
btalbot@talbot-realty.com



ADDRESS:	1820 St Charles Avenue Suite 211 New Orleans, LA 70130
RENTAL RATE:	\$22.00 RSF, Full Service
SIZE:	921 Rentable Square Feet
OFF STREET PARKING:	Parking is available at no cost on a 1 per 1,000 RSF basis
ZONING:	MU-1, Medium Intensity Mixed-Use District
COMMENTS:	This space is located in an ADA compliant, mixed-use office and retail complex and offers off-street parking in the Lower Garden District.

Bobby Talbot, CCIM
(504) 525-9763
btalbot@talbot-realty.com
www.talbot-realty.com





1 EXISTING FLOOR PLAN - SUITE 211
SCALE: 1/4"=1'-0"

SCALE: AS SHOWN	FILE NAME: 26019\ExistPlan01.C
DATE: 04/22/2026	
 STEVEN J. FINEGAN ARCHITECTS, LTD. A PROFESSIONAL CORPORATION 123 S. Pierce St. - New Orleans, LA 70116 (504)486-5744 www.stevfineganarchitect.com E-MAIL: stevef.architects@gmail.com	
1820 ST. CHARLES AVE. NEW ORLEANS, LA	A-1
<small>This drawing is the property of STEVEN J. FINEGAN ARCHITECTS, LTD. It is not to be reproduced or altered in whole or in part. It is not to be used for any purpose without the written consent of STEVEN J. FINEGAN ARCHITECTS, LTD. and is to be returned on request.</small>	

