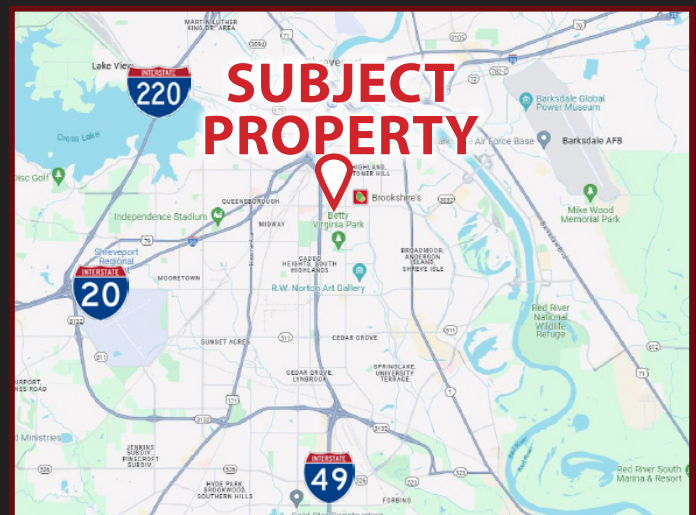




CLASS "A" OFFICE SUITE FOR LEASE

2950 FAIRFIELD AVENUE, SUITE 100, SHREVEPORT, LA 71104

- Suite 100 downstairs: 2,983 SF available
- Tenant signage available
- Lease rate: \$20/SF NN
- Ample parking
- Available July 1, 2025
- Suite 200 upstairs leased
- Conveniently located on Historic Fairfield Avenue
- Located minutes from Downtown and Ochsner LSU Health Medical Center
- Great visibility and excellent location



For more information, contact:

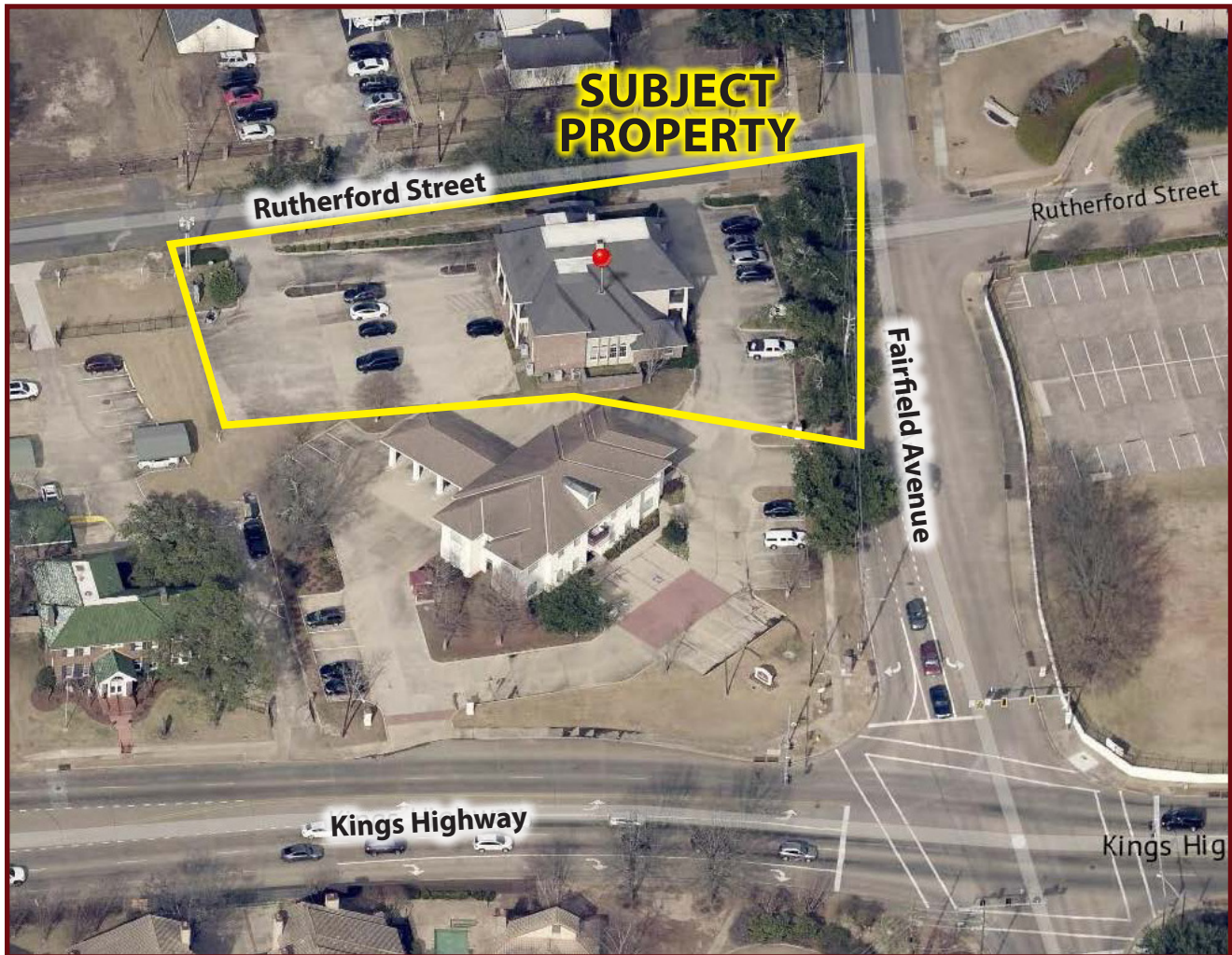
Brad Armstrong, Associate Broker | 318.222.2244
barmstrong@vintagerealty.com

ALL INFORMATION CONTAINED HEREIN IS BELIEVED TO BE ACCURATE, BUT IS NOT WARRANTED AND NO LIABILITY OF ERRORS OR OMISSIONS IS ASSURED BY EITHER THE PROPERTY OWNER OR VINTAGE REALTY COMPANY OR ITS AGENTS AND EMPLOYEES. PRICES AS STATED HEREIN AND PRODUCT AVAILABILITY IS SUBJECT TO CHANGE AND/OR SALE OR LEASE WITHOUT PRIOR NOTICE, AND ALL SIZES AND DIMENSIONS ARE SUBJECT TO CORRECTION. REV 2/2025



CLASS "A" OFFICE SUITE FOR LEASE

2950 FAIRFIELD AVE., SUITE 100
SHREVEPORT, LA 71104



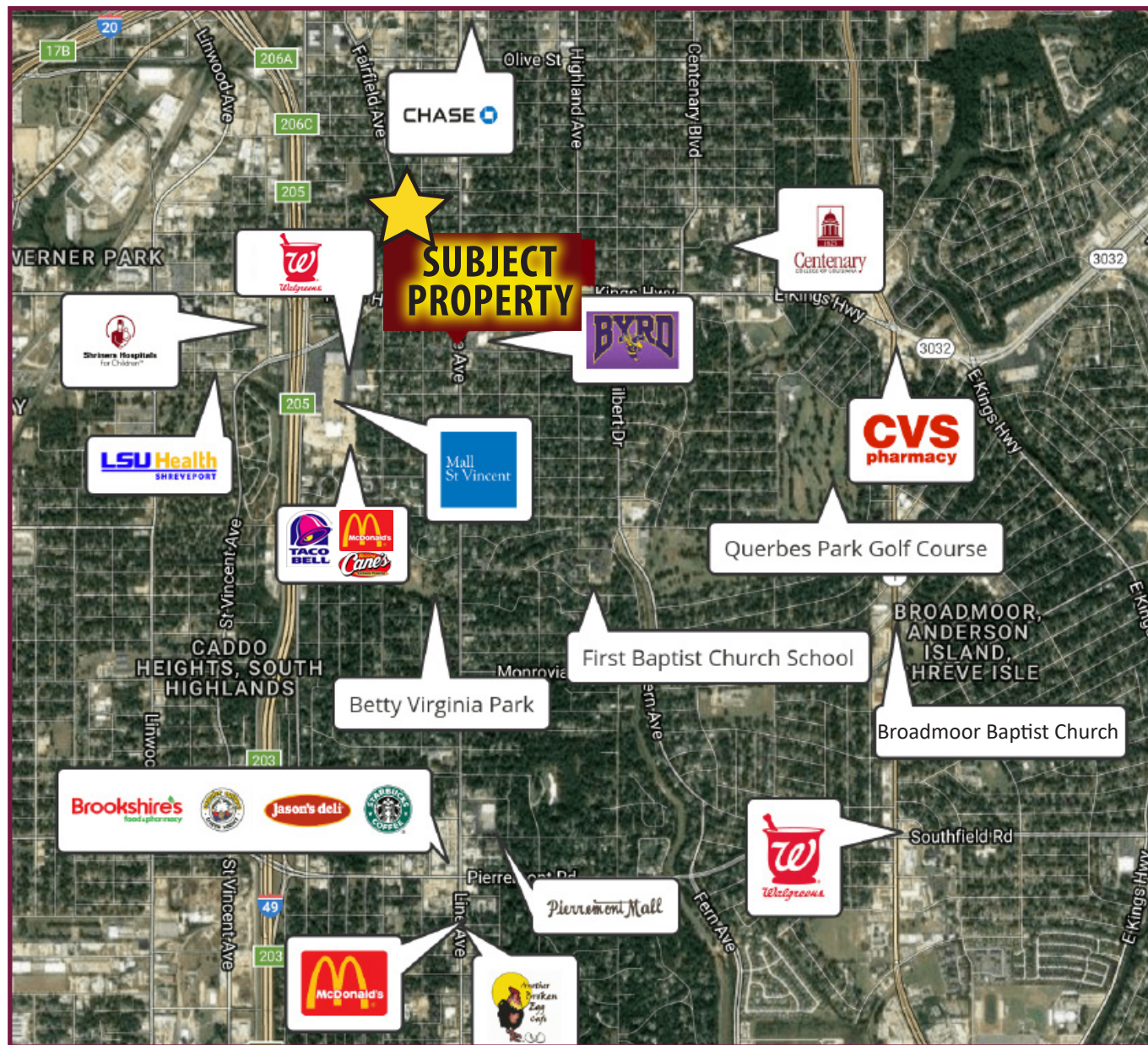
For information, please contact:

Brad Armstrong, Associate Broker | 318.222.2244
barmstrong@vintagerealty.com

ALL INFORMATION CONTAINED HEREIN IS BELIEVED TO BE ACCURATE, BUT IS NOT WARRANTED AND NO LIABILITY OF ERRORS OR OMISSIONS IS ASSURED BY EITHER THE PROPERTY OWNER OR VINTAGE REALTY COMPANY OR ITS AGENTS AND EMPLOYEES. PRICES AS STATED HEREIN AND PRODUCT AVAILABILITY IS SUBJECT TO CHANGE AND/OR SALE OR LEASE WITHOUT PRIOR NOTICE, AND ALL SIZES AND DIMENSIONS ARE SUBJECT TO CORRECTION. 2/2025

CLASS "A" OFFICE SUITE FOR LEASE

2950 FAIRFIELD AVE., SUITE 100
SHREVEPORT, LA 71104



For information, please contact:

Brad Armstrong, Associate Broker | 318.222.2244

barmstrong@vintagerealty.com

ALL INFORMATION CONTAINED HEREIN IS BELIEVED TO BE ACCURATE, BUT IS NOT WARRANTED AND NO LIABILITY OF ERRORS OR OMISSIONS IS ASSURED BY EITHER THE PROPERTY OWNER OR VINTAGE REALTY COMPANY OR ITS AGENTS AND EMPLOYEES. PRICES AS STATED HEREIN AND PRODUCT AVAILABILITY IS SUBJECT TO CHANGE AND/OR SALE OR LEASE WITHOUT PRIOR NOTICE, AND ALL SIZES AND DIMENSIONS ARE SUBJECT TO CORRECTION 2/2025