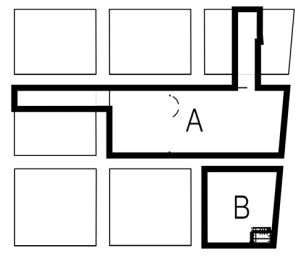


SITE LEGEND

- SITE AREA NOT IN PROJECT / CONTRACT
- PAINTED STRIPES AT CROSSINGS / AISLES
- PATTERNED CONCRETE SIDEWALK

SITE KEY PLAN



LANDSCAPING DATA

LANDSCAPE / PAVEMENT RATIO (WD PARKING)	TOTAL
LANDSCAPING AREA	7,555 SF
PAVEMENT AREA	73,541 SF
LANDSCAPE PERCENTAGE	10.27%

LEASING DATA

BUILDING AREA	TOTAL
ANCHOR BUILDING	54,390 SF
ALL OTHER RETAIL	54,713 SF
TOTAL BUILDING AREA	109,103 SF

BUILDING AREA	RETAIL	RESTAURANT	TOTAL
ANCHOR BUILDING	54,390 SF		54,390 SF
RETAIL A-1	3,075 SF		3,075 SF
RETAIL A-2	1,765 SF		1,765 SF
RETAIL A-3	3,699 SF		3,699 SF
RETAIL A-4	1,696 SF		1,696 SF
RETAIL A-5	1,729 SF		1,729 SF
RETAIL A-6	1,551 SF		1,551 SF
RETAIL B-1		3,206 SF	3,206 SF
RETAIL B-2		1,184 SF	1,184 SF
RETAIL B-3	2,541 SF		2,541 SF
RETAIL B-4	2,802 SF		2,802 SF
TOTAL PROPERTY A	68,742 SF	7,520 SF	77,637 SF

BUILDING AREA	RETAIL	RESTAURANT	TOTAL
RETAIL C-1	5,200 SF		5,200 SF
RETAIL C-2	16,088 SF		16,088 SF
RETAIL C-3	5,161 SF		5,161 SF
RETAIL C-4	1,782 SF		1,782 SF
ALMA RESTAURANT		3,235 SF	3,235 SF
TOTAL PROPERTY B	23,070 SF	8,395 SF	31,465 SF
TOTAL PROP. A & B			109,103 SF

SITE DATA

BUILDING AREA	RETAIL	RESTAURANT	TOTAL
ANCHOR BUILDING	54,390 SF		54,390 SF
RETAIL "A"	10,440 SF	3,075 SF	13,514 SF
RETAIL "B"	5,343 SF	4,390 SF	9,733 SF
RETAIL "C"	23,070 SF	5,161 SF	28,231 SF
ALMA RESTAURANT		3,235 SF	3,235 SF
TOTAL	93,324 SF	15,439 SF	109,103 SF

PARKING REQUIRED - PROPERTY A

WINN DIXIE	106 @ 1,500 SF
RETAIL - BUILDINGS "A" & "B"	63 @ 1,250 SF
RESTAURANT - BUILDINGS "A" & "B"	50 @ 1,150 SF
TOTAL REQUIRED PROPERTY A	219 CARS

PARKING REQUIRED - PROPERTY B

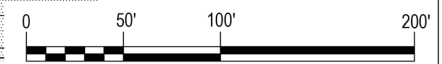
RETAIL BUILDING "C"	95 @ 1,300 SF
RESTAURANT ALMA	21 @ 1,150 SF
TOTAL REQUIRED PROPERTY B	116 CARS
TOTAL REQUIRED PROPERTIES A & B	335 CARS

PARKING PROVIDED

OFF-STREET	335 CARS
ON-STREET	24 CARS
LAND AREA	6.493 ACRES

SITE PLAN

SCALE 1" = 50'



320 N. Carrollton Avenue, Suite 100
 New Orleans, Louisiana 70119
 t. 504.488.7739 f. 504.488.7743
 www.VergesRome.com
 © copyright 2011



109 Northpark Blvd., Suite 300
 Covington, Louisiana 70433
 t. 985.898.2022 www.stirlingproperties.com

MID CITY MARKET

DATE ISSUED: 03 MAY 2012
 REVISIONS:
 REVISIONS:
 REVISIONS:
 DRAWN BY: MJR
 CHECKED BY: CEV
 PHASE:

CITY PLANNING COMMISSION

11003

TITLE: OVERALL SITE PLAN 47

SHEET: A1

NEW ORLEANS, LOUISIANA

NORTH CARROLLTON AVENUE