

## FOR SALE

### PROPERTY OVERVIEW

- Prime Development Tract in the Heart of Zachary, Louisiana
- High Growth Area with lots of traffic and good demographics
- 745 feet of Frontage on Church Street (Hwy 64)
- One (1) Mile East of the Intersection of Church Street (Hwy 64) and Hwy 964.

### SALE PRICE

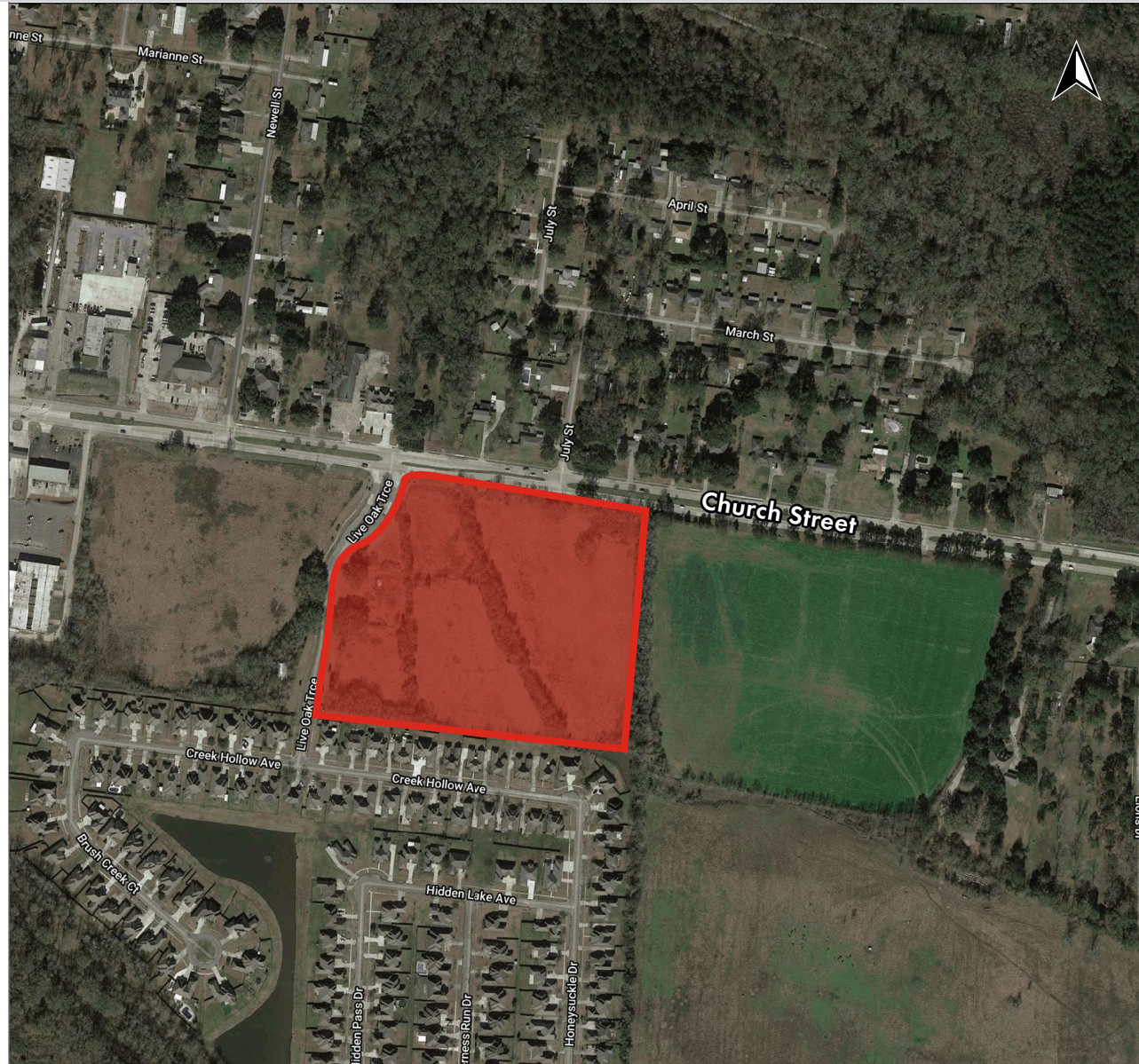
- \$3,000,000

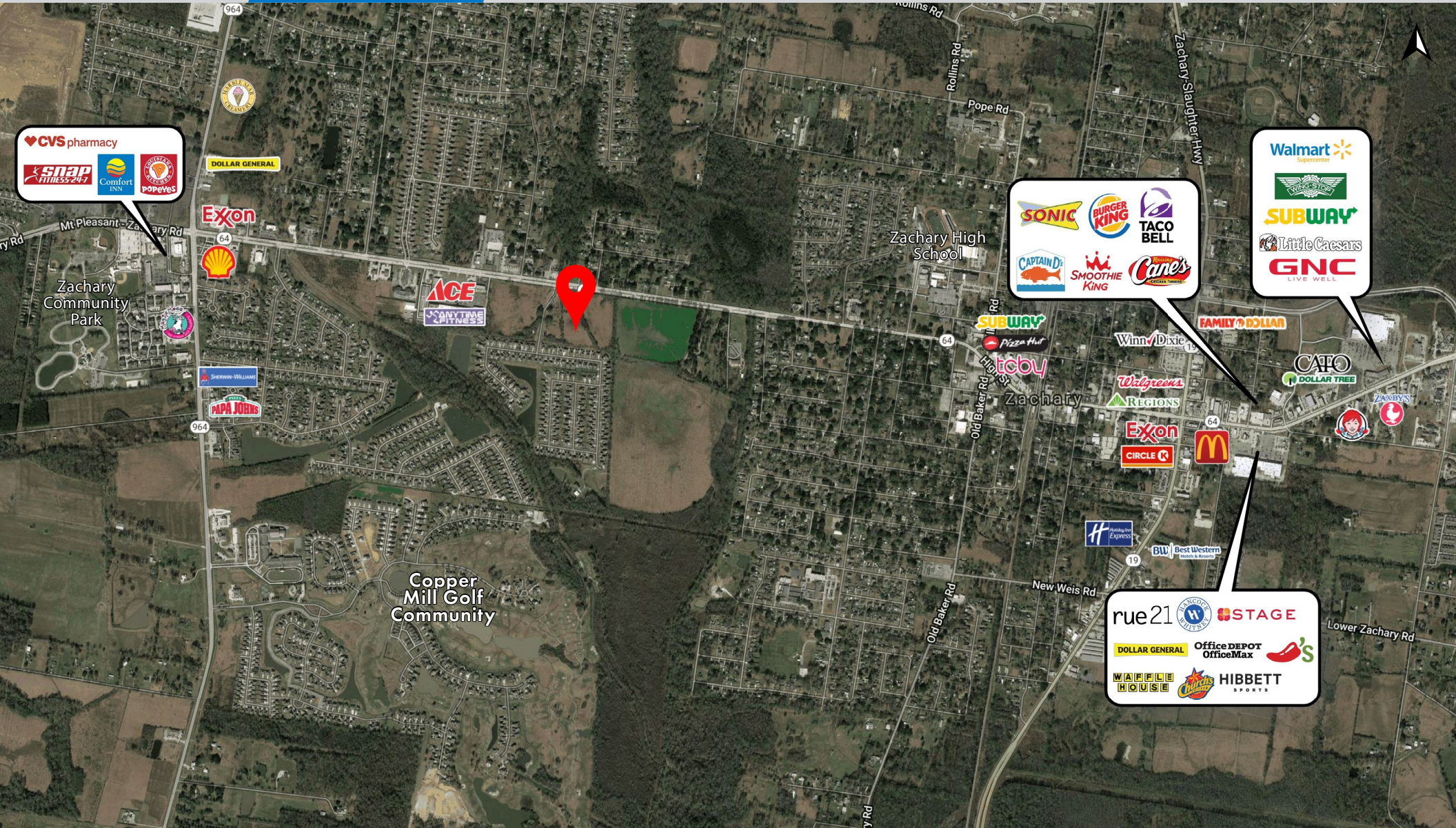
### LOT SIZE

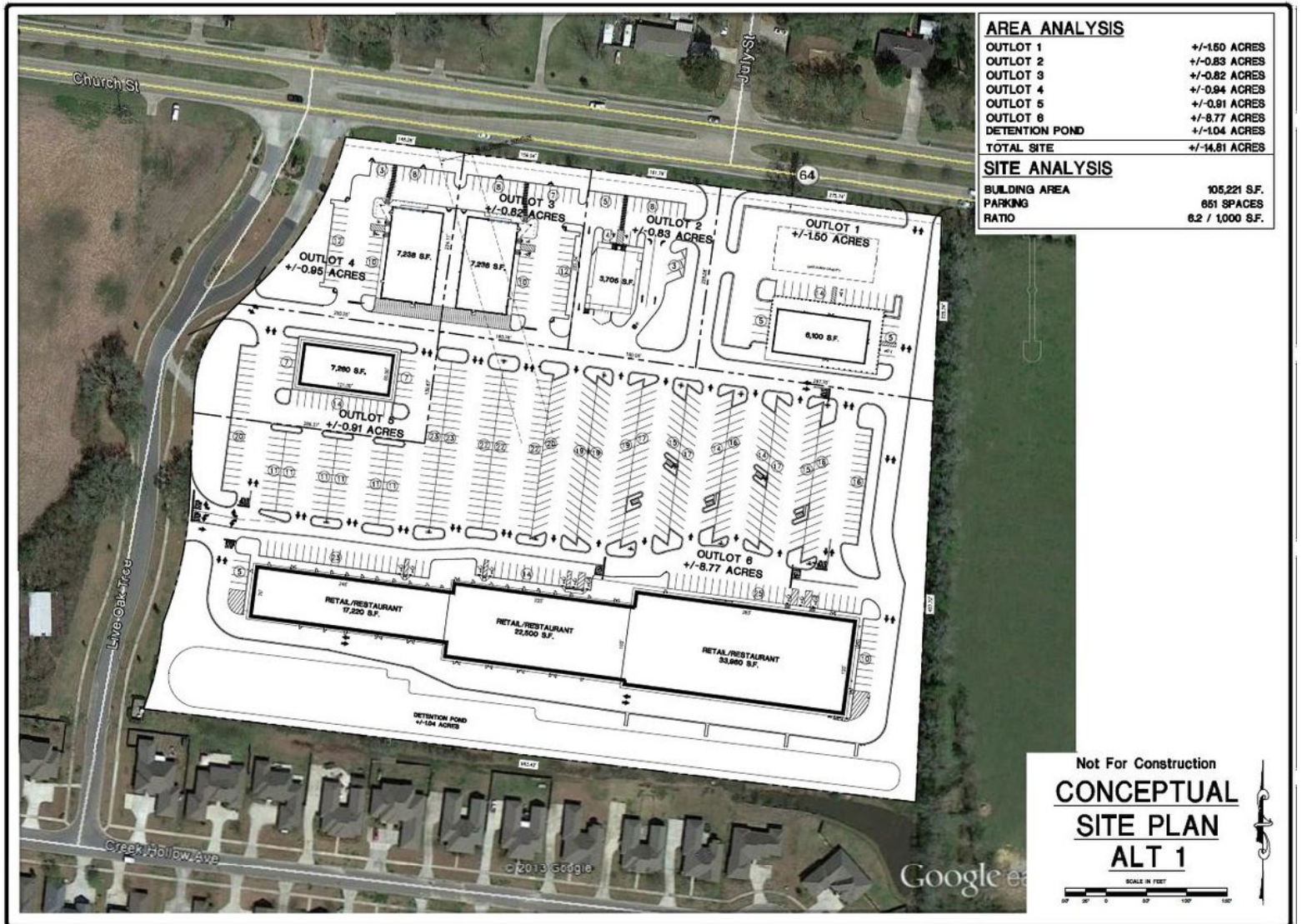
- 15.0 ACRES

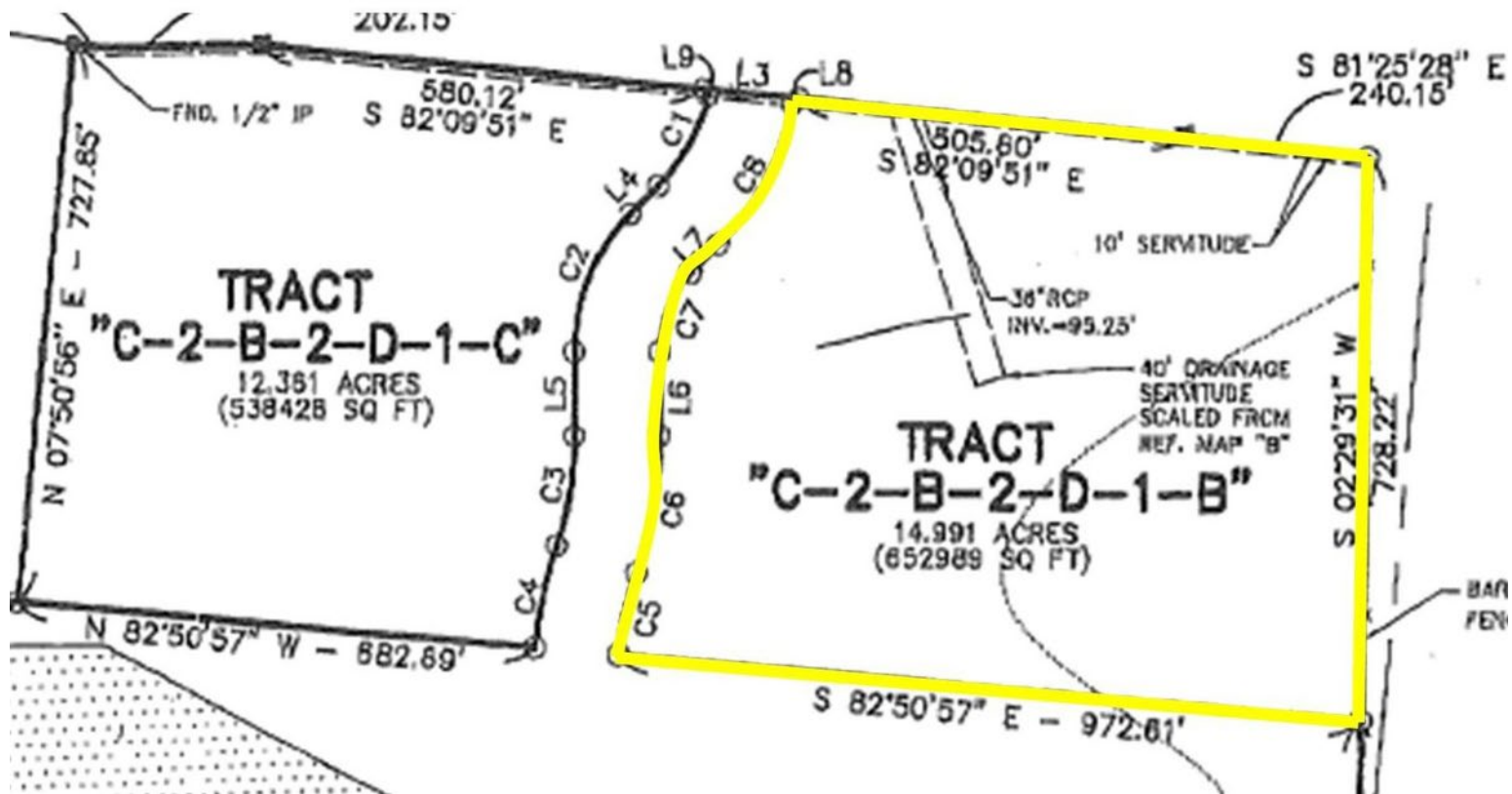
### ZONING

- Commercial Suburban (CS)



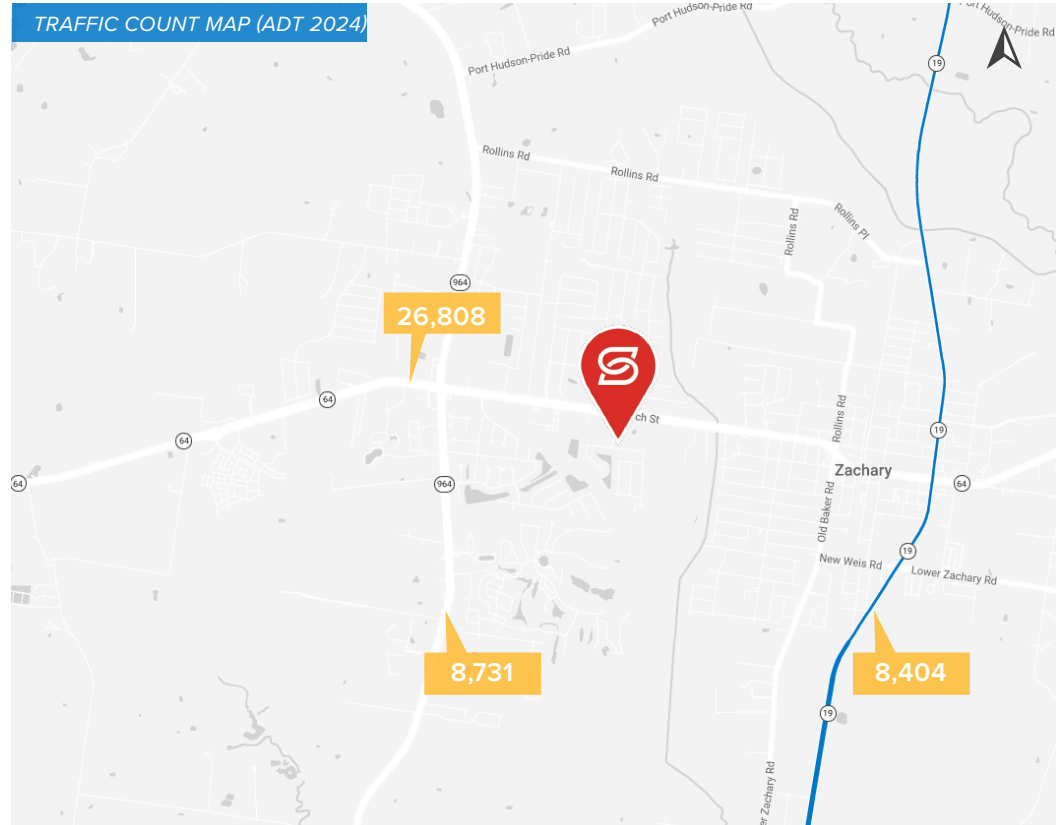
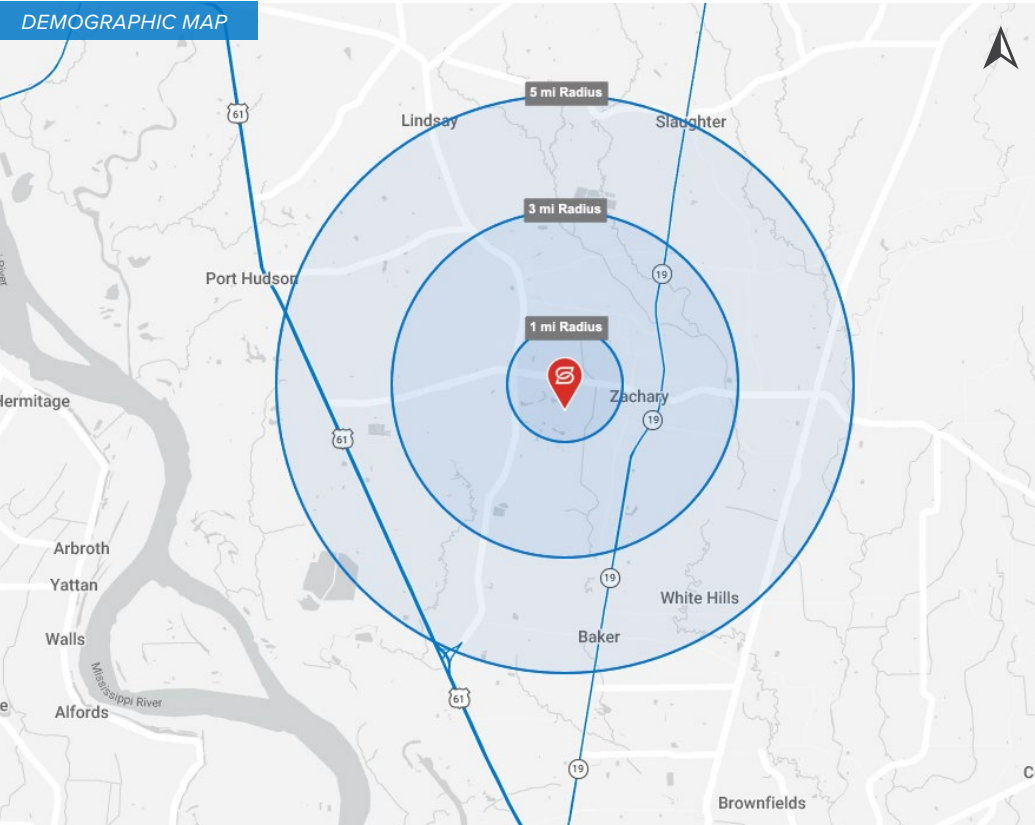






Information from: Downtown Development District of New Orleans (2024)





## 2025 DEMOGRAPHICS

**POPULATION**

Radius	1 MI	3 MI	5 MI
Population	7,278	18,508	33,637

**AVG. HH INCOME**

Radius	1 MI	3 MI	5 MI
Avg. HH Income	\$145,787	\$123,342	\$108,110

**HOUSEHOLDS**

Radius	1 MI	3 MI	5 MI
Households	2,480	6,561	11,936