

# 1025 Kaliste Saloom Road Suite B

OFFICE BUILDING FOR LEASE

1025 Kaliste Saloom Road Ste B Lafayette, LA 70508

Bill Stevenson, CCIM | 337.962.8300 | [bstevenson@beaubox.com](mailto:bstevenson@beaubox.com)  
Danielle Wirth | 337.557.4926 | [dwirth@beaubox.com](mailto:dwirth@beaubox.com)  
Brandon Abdella | 337.257.7900 | [babdella@beaubox.com](mailto:babdella@beaubox.com)





# 1025 Kaliste Saloom Road Suite B

## 1025 Kaliste Saloom Road Ste B Lafayette, LA 70508

### PROPERTY SUMMARY



### Property Description

Class B medical office leasing opportunity at 1025 Kaliste Saloom Road next to Acadiana Imaging. Centrally located near major roadways, this high-traffic location offers excellent visibility and convenient access throughout Lafayette. Fully equipped with a reception area, 3 exam rooms, an office, a lab, and 2 restrooms, this is a ideal medical suite for a single MD practice. Tenants and visitors will benefit from generous on-site parking and a professional setting. With modern features and a location surrounded by established commercial and medical developments, this property is ideal for practices seeking a high-profile presence in one of Lafayette's most active corridors.

### Property Highlights

- 1,800 sq ft medical suite
- High-traffic location
- Strong healthcare demand in the region

### Offering Summary

Lease Rate:	\$18.50 per month (MG)
Available SF:	1,800 SF
Building Size:	10,572 SF

Demographics	0.3 Miles	0.5 Miles	1 Mile
Total Households	560	1,291	4,495
Total Population	1,037	2,559	9,301
Average HH Income	\$101,208	\$113,769	\$136,773

**Bill Stevenson, CCIM**  
337.962.8300  
bstevenson@beaubox.com

**Danielle Wirth**  
337.557.4926  
dwirth@beaubox.com

**Brandon Abdella**  
337.257.7900  
babdella@beaubox.com

Broker of Record, Beau J. Box; Licensed by the Louisiana Real Estate Commission, Mississippi Real Estate Commission, Alabama Real Estate Commission and Florida Real Estate Commission, USA. This information has been secured from sources we believe to be reliable, but we make no representations or warranties, expressed or implied, as to the accuracy of the information. References to square footage or age are approximate. Buyer must verify the information and bears all risk for any inaccuracies. © Beau Box Commercial Real Estate. 5500 Bankers Avenue, Baton Rouge, LA 70808 | 225-237-3343. | December 02, 2025

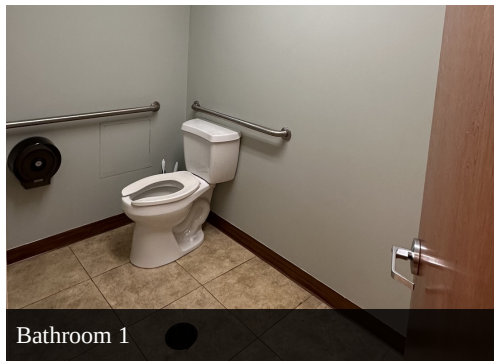




# 1025 Kaliste Saloom Road Suite B

## 1025 Kaliste Saloom Road Ste B Lafayette, LA 70508

### INTERIOR PHOTOS



**Bill Stevenson, CCIM**  
337.962.8300  
bstevenson@beaubox.com

**Danielle Wirth**  
337.557.4926  
dwirth@beaubox.com

**Brandon Abdella**  
337.257.7900  
babdella@beaubox.com

Broker of Record, Beau J. Box; Licensed by the Louisiana Real Estate Commission, Mississippi Real Estate Commission, Alabama Real Estate Commission and Florida Real Estate Commission, USA. This information has been secured from sources we believe to be reliable, but we make no representations or warranties, expressed or implied, as to the accuracy of the information. References to square footage or age are approximate. Buyer must verify the information and bears all risk for any inaccuracies. © Beau Box Commercial Real Estate. 5500 Bankers Avenue, Baton Rouge, LA 70808 | 225-237-3343. | December 02, 2025

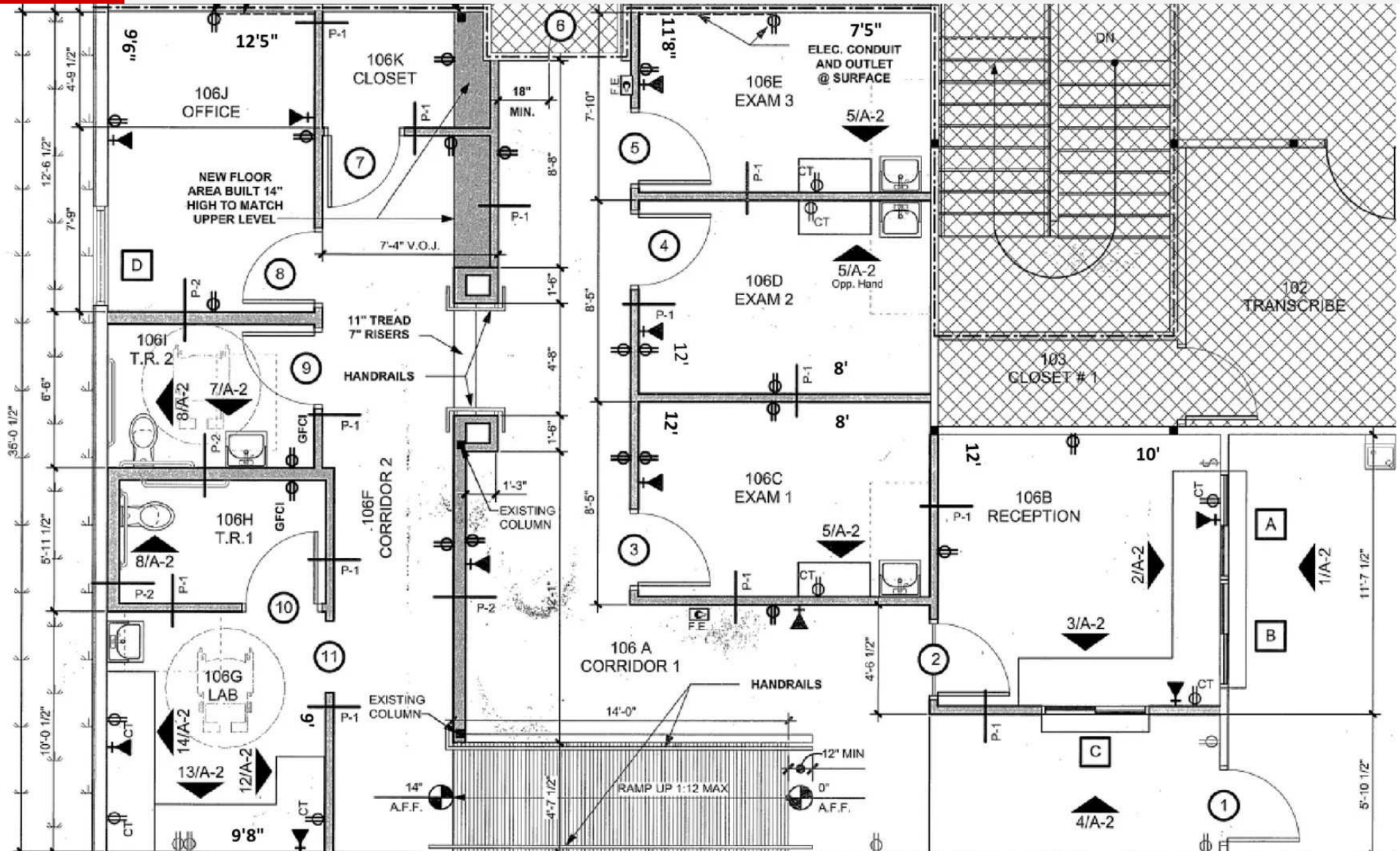




# 1025 Kaliste Saloom Road Suite B

## 1025 Kaliste Saloom Road Ste B Lafayette, LA 70508

### FLOOR PLAN



**Bill Stevenson, CCIM**  
337.962.8300  
bstevenson@beaubox.com

**Danielle Wirth**  
337.557.4926  
dwirth@beaubox.com

**Brandon Abdella**  
337.257.7900  
babdella@beaubox.com

Broker of Record, Beau J. Box; Licensed by the Louisiana Real Estate Commission, Mississippi Real Estate Commission, Alabama Real Estate Commission and Florida Real Estate Commission, USA. This information has been secured from sources we believe to be reliable, but we make no representations or warranties, expressed or implied, as to the accuracy of the information. References to square footage or age are approximate. Buyer must verify the information and bears all risk for any inaccuracies. © Beau Box Commercial Real Estate. 5500 Bankers Avenue, Baton Rouge, LA 70808 | 225-237-3343. | December 02, 2025





**1025 Kaliste Saloom Road Suite B**  
**1025 Kaliste Saloom Road Ste B Lafayette, LA 70508**

AERIAL AREA MAP



**Bill Stevenson, CCIM**  
337.962.8300  
bstevenson@beaubox.com

**Danielle Wirth**  
337.557.4926  
dwirth@beaubox.com

**Brandon Abdella**  
337.257.7900  
babdella@beaubox.com

Broker of Record, Beau J. Box; Licensed by the Louisiana Real Estate Commission, Mississippi Real Estate Commission, Alabama Real Estate Commission and Florida Real Estate Commission, USA. This information has been secured from sources we believe to be reliable, but we make no representations or warranties, expressed or implied, as to the accuracy of the information. References to square footage or age are approximate. Buyer must verify the information and bears all risk for any inaccuracies. © Beau Box Commercial Real Estate. 5500 Bankers Avenue, Baton Rouge, LA 70808 | 225-237-3343. | December 02, 2025





**1025 Kaliste Saloom Road Suite B**  
**1025 Kaliste Saloom Road Ste B Lafayette, LA 70508**

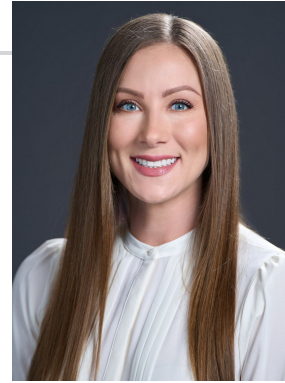
**MEET THE TEAM**



**Bill Stevenson, CCIM**

Senior Commercial Agent

**Direct:** 337.962.8300 **Cell:** 337.962.8300  
bstevenson@beaubox.com



**Danielle Wirth**

Agent

**Direct:** 337.557.4926  
dwirth@beaubox.com



**Brandon Abdella**

Commercial Agent

**Direct:** 337.257.7900 **Cell:** 337.257.7900  
babdella@beaubox.com

LA #995702501

**Bill Stevenson, CCIM**  
337.962.8300  
bstevenson@beaubox.com

**Danielle Wirth**  
337.557.4926  
dwirth@beaubox.com

**Brandon Abdella**  
337.257.7900  
babdella@beaubox.com

Broker of Record, Beau J. Box; Licensed by the Louisiana Real Estate Commission, Mississippi Real Estate Commission, Alabama Real Estate Commission and Florida Real Estate Commission, USA. This information has been secured from sources we believe to be reliable, but we make no representations or warranties, expressed or implied, as to the accuracy of the information. References to square footage or age are approximate. Buyer must verify the information and bears all risk for any inaccuracies. © Beau Box Commercial Real Estate. 5500 Bankers Avenue, Baton Rouge, LA 70808 | 225-237-3343. | December 02, 2025

