

Office Space in Elmwood Office Park

880 W Commerce Rd New Orleans, LA 70123

PROPERTY SUMMARY



Property Description

880 W Commerce is an exceptional five-story office building in the Elmwood Office Park. This building has ample surface parking for both tenants and visitors. Conveniently located with easy access to all areas of New Orleans.

The building consists of numerous floor plans that can be subdivided in various ways. Landlord offers very competitive tenant improvement allowance. Amenities include a large conference center and training room in the adjacent building, at 800 W Commerce Rd.



Location Description

In between S. Clearview Parkway and Elmwood Park Blvd, right off of Mounes Street. Located near Elmwood Oaks Shopping Center and surrounded by prime retail and dining options.

Offering Summary

Lease Rate:	\$19.00 - 19.50 SF/yr (Full Service)
Available SF:	1,127 - 18,346 SF
Lot Size:	See Agent
Building Size:	93,629 SF

Cres Gardner
504.261.2032
cgardner@beaubox.com

Lance Ginn
504.525.1410
lginn@beaubox.com

Broker of Record, Beau J. Box; Licensed by the Louisiana Real Estate Commission, Mississippi Real Estate Commission, Alabama Real Estate Commission and Florida Real Estate Commission, USA. This information has been secured from sources we believe to be reliable, but we make no representations or warranties, expressed or implied, as to the accuracy of the information. References to square footage or age are approximate. Buyer must verify the information and bears all risk for any inaccuracies. © Beau Box Commercial Real Estate. 5500 Bankers Avenue, Baton Rouge, LA 70808 | 225-237-3343. | October 27, 2023



Office Space in Elmwood Office Park

880 W Commerce Rd New Orleans, LA 70123

LOCATION MAP



Map data ©2022 Google Imagery ©2022 , Maxar Technologies, U.S. Geological Survey, USDA/FPAC/GEO

Cres Gardner
504.261.2032
cgardner@beaubox.com

Lance Ginn
504.525.1410
lginn@beaubox.com

Broker of Record, Beau J. Box; Licensed by the Louisiana Real Estate Commission, Mississippi Real Estate Commission, Alabama Real Estate Commission and Florida Real Estate Commission, USA. This information has been secured from sources we believe to be reliable, but we make no representations or warranties, expressed or implied, as to the accuracy of the information. References to square footage or age are approximate. Buyer must verify the information and bears all risk for any inaccuracies. © Beau Box Commercial Real Estate. 5500 Bankers Avenue, Baton Rouge, LA 70808 | 225-237-3343. | October 27, 2023



Office Space in Elmwood Office Park

880 W Commerce Rd New Orleans, LA 70123

ADDITIONAL PHOTOS



Cres Gardner
504.261.2032
cgardner@beaubox.com

Lance Ginn
504.525.1410
lginn@beaubox.com

Broker of Record, Beau J. Box; Licensed by the Louisiana Real Estate Commission, Mississippi Real Estate Commission, Alabama Real Estate Commission and Florida Real Estate Commission, USA. This information has been secured from sources we believe to be reliable, but we make no representations or warranties, expressed or implied, as to the accuracy of the information. References to square footage or age are approximate. Buyer must verify the information and bears all risk for any inaccuracies. © Beau Box Commercial Real Estate. 5500 Bankers Avenue, Baton Rouge, LA 70808 | 225-237-3343. | October 27, 2023



Office Space in Elmwood Office Park

880 W Commerce Rd New Orleans, LA 70123

LEASE SPACES

Lease Information

Lease Type:	Full Service	Lease Term:	Negotiable
Total Space:	1,127 - 18,346 SF	Lease Rate:	\$19.00 - \$19.50 SF/yr

Available Spaces

Suite	Tenant	Size (SF)	Lease Type	Lease Rate
101	Available	4,413 SF	Full Service	\$19.00 - 19.50 SF/yr
102	Available	2,762 SF	Full Service	\$19.00 - 19.50 SF/yr
103	Available	1,127 SF	Full Service	\$19.00 - 19.50 SF/yr
105	Available	1,397 SF	Full Service	\$19.00 - 19.50 SF/yr
200	Available	18,346 SF	Full Service	\$19.00 - 19.50 SF/yr
302	Available	6,249 SF	Full Service	\$19.00 - 19.50 SF/yr
303	Available	1,780 SF	Full Service	\$19.00 - 19.50 SF/yr
405	Available	2,896 SF	Full Service	\$19.00 - 19.50 SF/yr
406	Available	2,348 SF	Full Service	\$19.00 - 19.50 SF/yr
502	Available	4,419 SF	Full Service	\$19.00 - 19.50 SF/yr

Cres Gardner

504.261.2032

cgardner@beaubox.com

Lance Ginn

504.525.1410

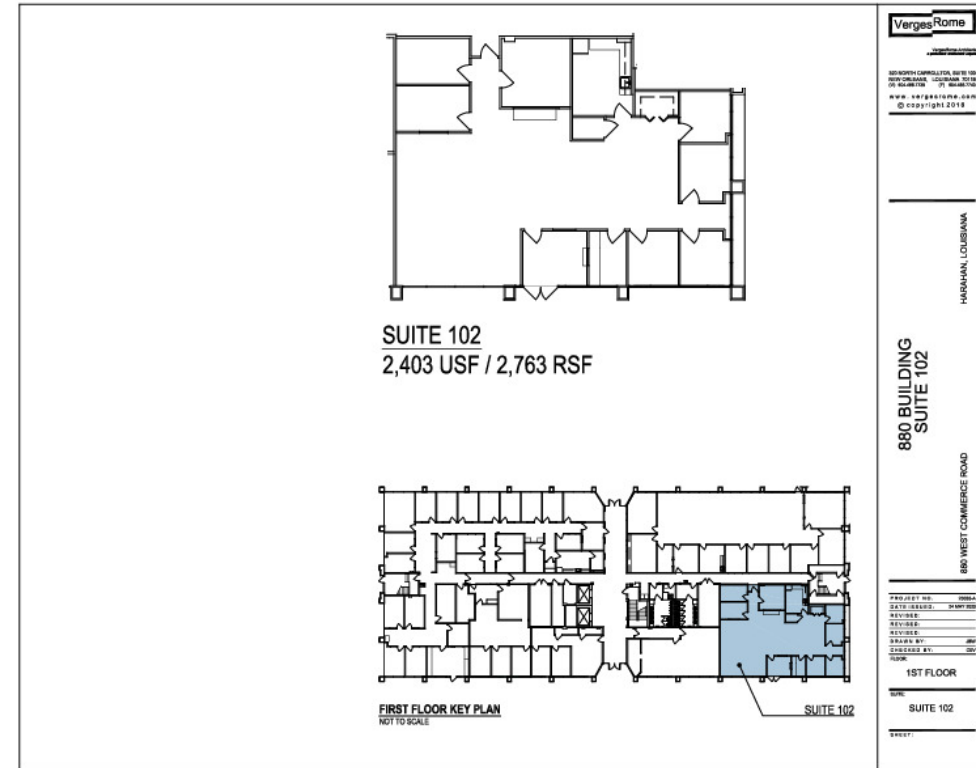
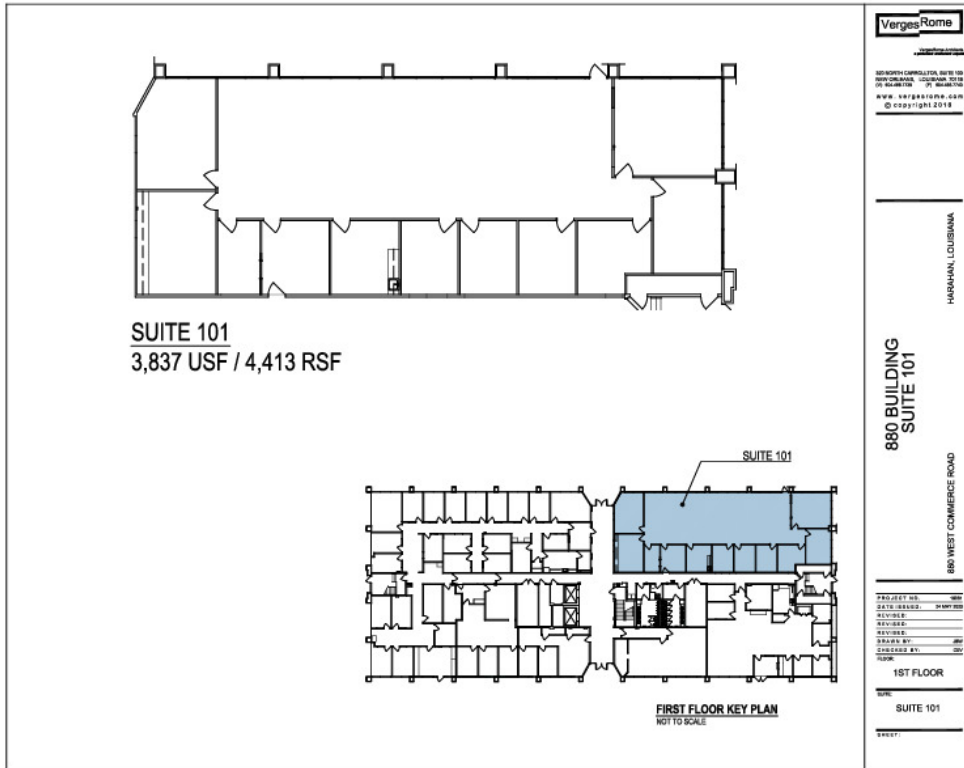
lginn@beaubox.com

Broker of Record, Beau J. Box; Licensed by the Louisiana Real Estate Commission, Mississippi Real Estate Commission, Alabama Real Estate Commission and Florida Real Estate Commission, USA. This information has been secured from sources we believe to be reliable, but we make no representations or warranties, expressed or implied, as to the accuracy of the information. References to square footage or age are approximate. Buyer must verify the information and bears all risk for any inaccuracies. © Beau Box Commercial Real Estate. 5500 Bankers Avenue, Baton Rouge, LA 70808 | 225-237-3343. | October 27, 2023



Office Space in Elmwood Office Park 880 W Commerce Rd New Orleans, LA 70123

FLOOR PLANS



Cres Gardner
504.261.2032
cgardner@beaubox.com

Lance Ginn
504.525.1410
lginn@beaubox.com

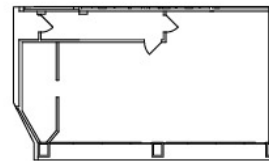
Broker of Record, Beau J. Box; Licensed by the Louisiana Real Estate Commission, Mississippi Real Estate Commission, Alabama Real Estate Commission and Florida Real Estate Commission, USA. This information has been secured from sources we believe to be reliable, but we make no representations or warranties, expressed or implied, as to the accuracy of the information. References to square footage or age are approximate. Buyer must verify the information and bears all risk for any inaccuracies. © Beau Box Commercial Real Estate. 5500 Bankers Avenue, Baton Rouge, LA 70808 | 225-237-3343. | October 27, 2023



Office Space in Elmwood Office Park

880 W Commerce Rd New Orleans, LA 70123

FLOOR PLANS



SUITE 103
980 USF / 1,127 RSF



FIRST FLOOR KEY PLAN
NOT TO SCALE

SUITE 103

VergesRome
www.vergesrome.com
© copyright 2018

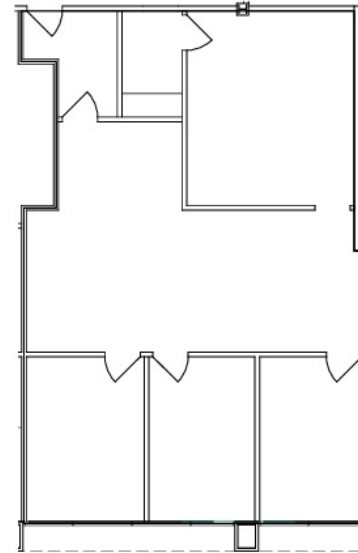
HARRISMAN, LOUISIANA

**880 BUILDING
SUITE 103**

880 WEST COMMERCE ROAD

PROJECT NO. 1000000000
DATE ISSUED: 10/27/2023
REVISED:
REVISED:
DESIGN BY: [signature]
CHECKED BY: [signature]
TYPED:
1ST FLOOR

NAME: SUITE 103
STREET:



SUITE 105
1,215 USF / 1,397 RSF



SUITE 105

VergesRome
www.vergesrome.com
© copyright 2018

HARRISMAN, LOUISIANA

**880 BUILDING
SUITE 105**

880 WEST COMMERCE ROAD

PROJECT NO. 1000000000
DATE ISSUED: 10/27/2023
REVISED:
REVISED:
DESIGN BY: [signature]
CHECKED BY: [signature]
TYPED:
1ST FLOOR

NAME: SUITE 105
STREET:

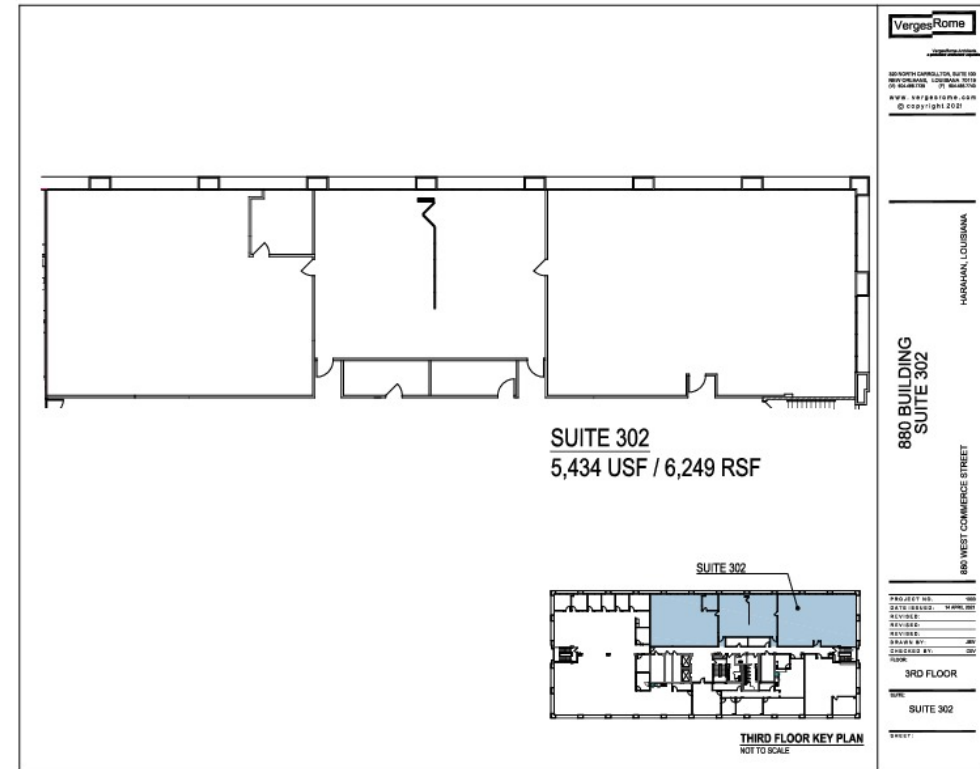
Cres Gardner
504.261.2032
cgardner@beaubox.com

Lance Ginn
504.525.1410
lginn@beaubox.com

Broker of Record, Beau J. Box; Licensed by the Louisiana Real Estate Commission, Mississippi Real Estate Commission, Alabama Real Estate Commission and Florida Real Estate Commission, USA. This information has been secured from sources we believe to be reliable, but we make no representations or warranties, expressed or implied, as to the accuracy of the information. References to square footage or age are approximate. Buyer must verify the information and bears all risk for any inaccuracies. © Beau Box Commercial Real Estate. 5500 Bankers Avenue, Baton Rouge, LA 70808 | 225-237-3343. | October 27, 2023



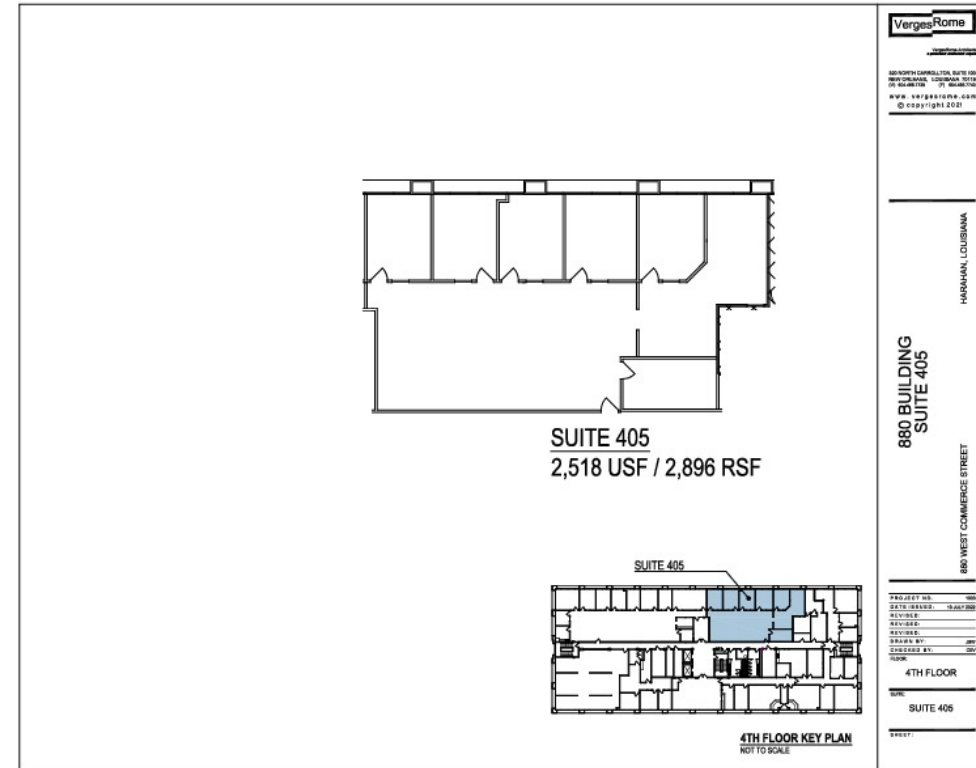
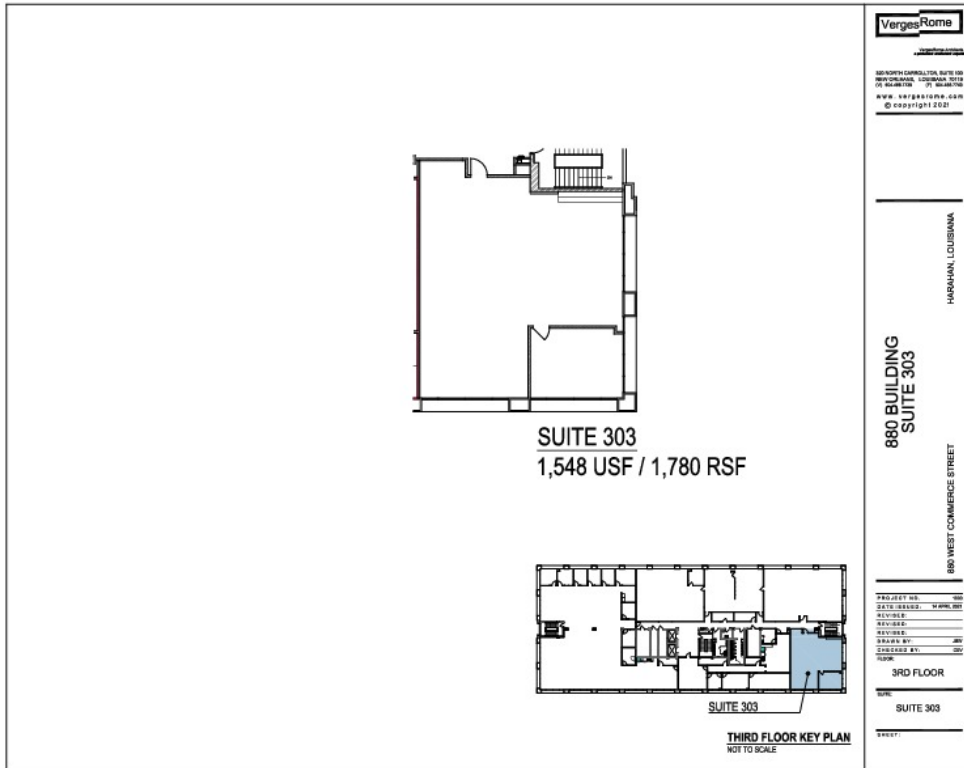
FLOOR PLANS



Office Space in Elmwood Office Park

880 W Commerce Rd New Orleans, LA 70123

FLOOR PLANS



Cres Gardner
504.261.2032
cgardner@beaubox.com

Lance Ginn
504.525.1410
lginn@beaubox.com

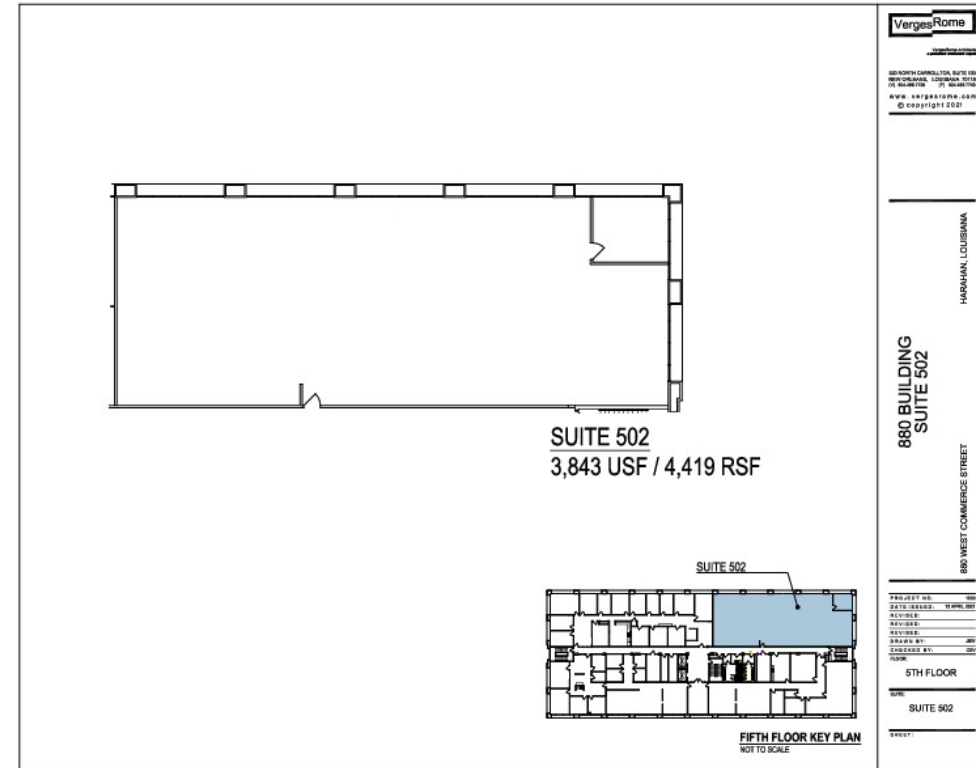
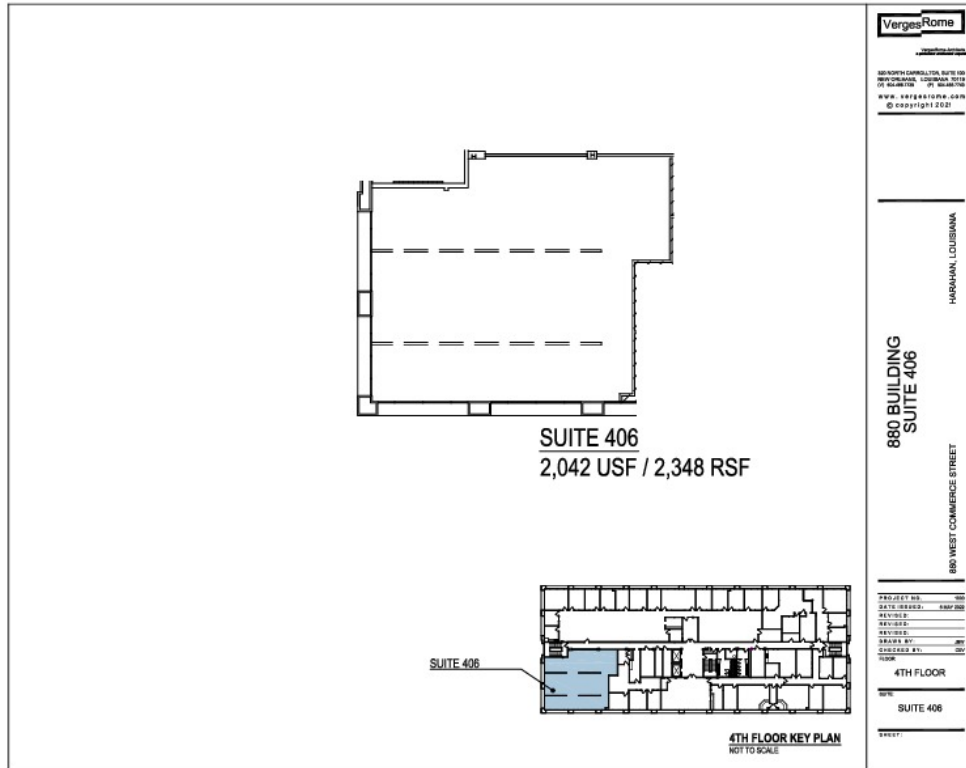
Broker of Record, Beau J. Box; Licensed by the Louisiana Real Estate Commission, Mississippi Real Estate Commission, Alabama Real Estate Commission and Florida Real Estate Commission, USA. This information has been secured from sources we believe to be reliable, but we make no representations or warranties, expressed or implied, as to the accuracy of the information. References to square footage or age are approximate. Buyer must verify the information and bears all risk for any inaccuracies. © Beau Box Commercial Real Estate. 5500 Bankers Avenue, Baton Rouge, LA 70808 | 225-237-3343. | October 27, 2023



Office Space in Elmwood Office Park

880 W Commerce Rd New Orleans, LA 70123

FLOOR PLANS



Cres Gardner
504.261.2032
cgardner@beaubox.com

Lance Ginn
504.525.1410
lginn@beaubox.com

Broker of Record, Beau J. Box; Licensed by the Louisiana Real Estate Commission, Mississippi Real Estate Commission, Alabama Real Estate Commission and Florida Real Estate Commission, USA. This information has been secured from sources we believe to be reliable, but we make no representations or warranties, expressed or implied, as to the accuracy of the information. References to square footage or age are approximate. Buyer must verify the information and bears all risk for any inaccuracies. © Beau Box Commercial Real Estate. 5500 Bankers Avenue, Baton Rouge, LA 70808 | 225-237-3343. | October 27, 2023

