



WAREHOUSE & YARD FACILITY FOR LEASE

4850 BLOOMFIELD STREET | JEFFERSON, LA



BUILDING AREA

6,000 square feet industrial facility of steel and metal clad construction; includes approximately 1,000 sq. ft. of office area. Significant fenced yard area suitable for vehicle or other storage.

LOADING

Eight (8) ground level overhead doors (4 doors/side)

LAND AREA

83,458 square feet mostly concrete paved and completely fenced

AVAILABLE

October 1, 2025

ZONING

M-1, Industrial District

RENTAL RATE

\$6,500.00 per month, net, net, net

Max J. Derbes, Inc.
REALTORS ■

CONTACT
DAVID QUINN, SIOR

OFFICE 504.733.5981
david@maxderbes.com

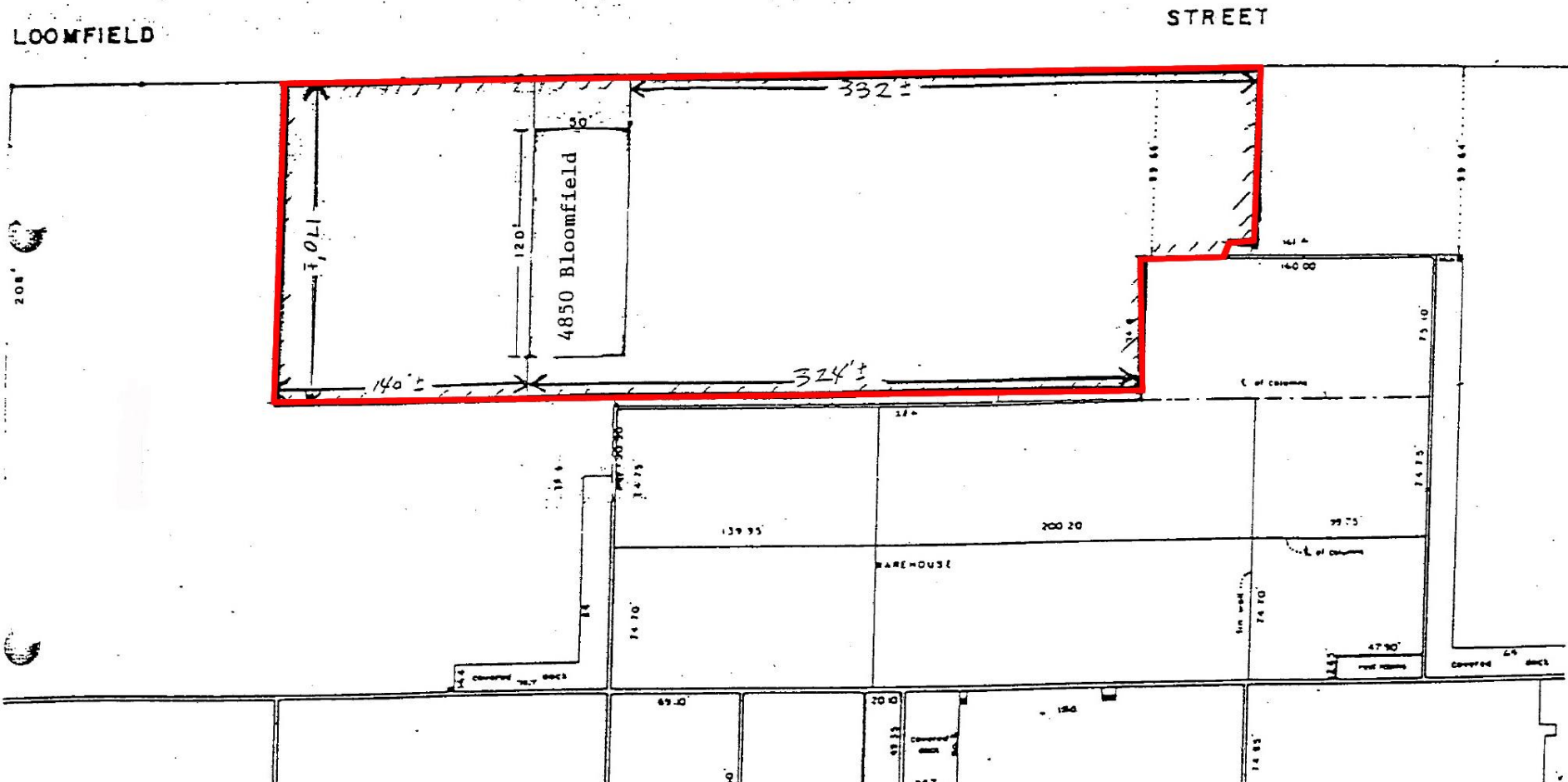
Max J. Derbes, Inc.
5440 Mounes Street, Ste 100
New Orleans, LA 70123





WAREHOUSE & YARD FACILITY FOR LEASE

4850 BLOOMFIELD STREET | JEFFERSON, LA



Max J. Derbes, Inc.
REALTORS ■

CONTACT
DAVID QUINN, SIOR

OFFICE 504.733.5981
david@maxderbes.com

Max J. Derbes, Inc.
5440 Mounes Street, Ste 100
New Orleans, LA 70123

